

## Specifications

- Molded of unbreakable nylon
- Ambient temperature ranges: -70°C to 125°C
- Secured by coil terminal hardware
- Part number molded into cover
- Positive protection between power stubs



**Part No. 49-2665**  
**MS27242-1**



**Part No. 49-2667**  
**MS27243-3**



**Part No. 49-2661**  
**MS27243-1**



**Part No. 49-2670**  
**MS27243-4**

Terminal Covers Application

Safran Electrical & Power Relays	Relay MS Numbers	Terminal Cover Part Number	MS27243
6042H110-2	MS24143-D3	49-2661	-1
26042H141-2	MS24143-D1	49-2661	-1
6042H142-2	MS24143-D2	49-2661	-1
6042H145-2	MS24376-D1	49-2661	-1
6042H146-2	MS24376-D2	49-2661	-1
6042H147-2	MS24376-A1	49-2661	-1
6042H148-2	MS24376-A2	49-2661	-1
6042H151-2	MS24142-D1	49-2672	-5
6042H152-2	MS24142-D2	49-2672	-5
6042H153-2	MS24184-D1	49-2672	-5
6042H154-2	MS24184-D2	49-2672	-5
6042H155-2	MS24140-D1	49-2667	-3
6042H156-2	MS24140-D2	49-2667	-3
6042H159-2	MS24141-D1	49-2665	-2
6042H160-2	MS24141-D2	49-2665	-2
6042H161-2	MS24168-D1	49-2670	-4
6042H162-2	MS24168-D2	49-2670	-4
6042H166-2	MS24182-D1	49-2667	-3
6042H167-2	MS24183-D1	49-2665	-2
6042H286-2	MS24168-A4	49-2670	-4
6042H288-2	MS24376-A3	49-2661	-1
6042H289-2	MS24168-A3	49-2670	-4
6042H290-2	MS24143-A3	49-2661	-1
6042H291-2	MS24143-A4	49-2661	-1
SM400H2-2	—	49-2672	-5
SM400H3-2	—	49-2672	-5

Approximate Dimensions and Weights

Part Number	Figure Number	Dimensions in In./Mill.			Ship Wt. Lbs./ gm
		A	B	C	
49-2661	1	2.32/58.93	0.75/19.05	2.94/74.68	.025/11.31
49-2665	1	2.56/65.02	1.17/29.72	2.12/53.85	.026/11.77
49-2667	1	2.66/67.56	1.11/28.19	2.05/52.07	.027/12.22
49-2670	1	2.75/69.85	1.06/26.92	3.81/96.77	.044/19.91
49-2672	1	3.00/76.20	1.17/29.72	2.50/63.50	.030/13.57

NOTE: Dimensions are approximate and should not be used for construction purposes.

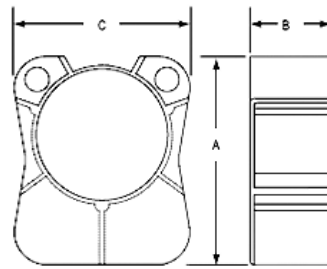


Figure 1

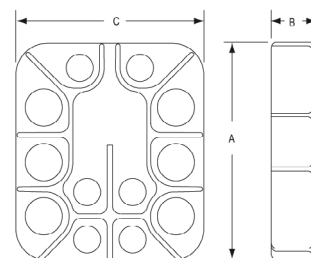


Figure 2