

10 Specifications

Product specifications

Type	FA Cooler (Lateral-mount Type)				
Model	ENC-AR422L-CU	ENC-AR452L-CU	ENC-AR620L-CU	ENC-AR1120L-CU	
Cooling capacity ^{*1}	400/450 W (50/60 Hz)	400/450 W (50/60 Hz)	500/600 W (50/60 Hz)	950/1100 W (50/60 Hz)	
Power supply	Single-phase 200 V/200-220 V \pm 10% 50/60 Hz	Single-phase 200 V \pm 10% 50/60 Hz	Single-phase 200 V \pm 10% 50/60 Hz	Single-phase 200 V \pm 10% 50/60 Hz	
Consumption current ^{*2}	Rating	1.8/1.7 A	1.8/1.5 A	1.8/1.6 A	2.6/2.4 A
	MAX	1.9/1.8 A	2.0/1.8 A	2.1/1.9 A	3.1/3.2 A
Starting current	4.0/4.2 A	4.0/4.2 A	4.0/4.2 A	7.5/7.1 A	
Power consumption (MAX) ^{*2}	Rating	295/330 W	280/260 W	280/270 W	440/460 W
	MAX	335/365 W	340/320 W	370/360 W	560/570 W
Ambient temperature	25 to 45°C		20 to 50°C		
Ambient humidity	10 to 85% (No condensation)				
Coolant	HFC-134a (Non-regulated CFC)				
Preset temperature range	25 to 45°C				
No. of fan	3	3	2	2	
Output	Cooling operation output (Rated voltage, normally open: 250 VAC 2 A), Alarm output (Rated voltage, normally open: 250 VAC 2 A)				
Display	Panel internal temperature indicator (Also used as error display), RUN LED				
Noise immunity ^{*3}	EN61000-3-2, EN61000-3-3, EN55014-1, EN55014-2, EN61000-6-2, EN61000-6-4	EN61000-3-2, EN61000-3-3, EN55014-1, EN55014-2			
Noise	Approx. 59/61.5 dB		Approx. 63/67 dB	Approx. 64/68 dB	
Vibration resistance	Total amplitude: 20 mm, Frequency: 300 CPM				
Paint color	Munsell 5Y 7/1 Equivalent color of light beige				
Outer dimensions	450 H x 300 W x 115 D	450 H x 300 W x 115 D	450 H x 350 W x 200 D	730 H x 300 W x 230 D	
Weight	13 kg	13 kg	16 kg	23 kg	

Accessory

Mounting bolt	M6 x 20L x 6	M6 x 20L x 6	M6 x 20L x 6	M6 x 20L x 6
Instruction manual	2 sets (English and Japanese)			
Drain hose	2 m	2 m	2 m	2 m
Insulation lock ties	1	1	1	1
Washer	–	–	2	2
Spacer	6	6	6	6
Air direction louver	–	–	1	1
Mounting screw for louver	–	–	2	2
Mounting nut	–	–	–	–
Compound screw	–	–	–	–

Notes:

*1: The rated capacity value with an ambient temperature of 35°C and a preset panel internal temperature of 35°C.
(Measurement condition: JIS-C-9612 air-enthalpy method)

*2: The rated value is measured under an ambient temperature of 35°C and an ambient humidity of 40%. The maximum value is measured under the highest allowable ambient temperature and an ambient humidity of 40%.

*3: CE Marking requirements

10. Specifications

Product specifications

Type	FA Cooler (Lateral-mount Type)		
Model	ENC-AR1652L-CU	ENC-AR2200L-CU	ENC-AR2900L-CU
Cooling capacity ^{*1}	1500/1600 W (50/60 Hz)	2000/2200 W (50/60 Hz)	2600/2900 W (50/60 Hz)
Power supply	Single-phase 200 V±10% 50/60 Hz	Three-phase 200 V±10% 50/60 Hz	Three-phase 200 V±10% 50/60 Hz
Consumption current ^{*2}	Rating	3,8/3,6 A	3,4/3,2 A
	MAX	4,7/4,6 A	4,4/4,1 A
Starting current	16.5/15.5 A	27/25 A	31/30 A
Power consumption (MAX) ^{*2}	Rating	640/710 W	815/950 W
	MAX	830/900 W	1100/1200 W
Ambient temperature	20 to 55°C		
Ambient humidity	10 to 85% (No condensation)		
Coolant	HFC-134a (Non-regulated CFC)		
Preset temperature range	25 to 45°C		
No. of fan	3	4	5
Output	Cooling operation output (Rated voltage, normally open: 250 VAC 2 A), Alarm output (Rated voltage, normally open: 250 VAC 2 A)		
Display	Panel internal temperature indicator (Also used as error display), RUN LED		
Noise immunity ^{*3}	EN61000-3-2, EN61000-3-3, EN55014-1, EN55014-2		
Noise	Approx. 68/72 dB		Approx. 70/73 dB
Vibration resistance	Total amplitude: 20 mm, Frequency: 300 CPM		
Paint color	Munsell 5Y 7/1 Equivalent color of light beige		
Outer dimensions	1000 H x 400 W x 230 D	1200 H x 450 W x 230 D	1380 H x 450 W x 230 D
Weight	39 kg	48 kg	57 kg

Accessory

Mounting bolt	M8 x 25L x 6		
Instruction manual	2 sets (English and Japanese)		
Drain hose	2 m		
Insulation lock ties	1		
Washer	2		
Spacer	6		
Air direction louver	1		
Mounting screw for louver	2	4	
Mounting nut	M8 x 2		
Compound screw	M8 x 2		

Notes:

*1: The rated capacity value with an ambient temperature of 35°C and a preset panel internal temperature of 35°C.
(Measurement condition: JIS-C-9612 air-enthalpy method)

*2: The rated value is measured under an ambient temperature of 35°C and an ambient humidity of 40%. The maximum value is measured under the highest allowable ambient temperature and an ambient humidity of 40%.

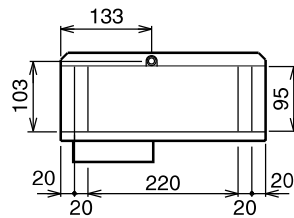
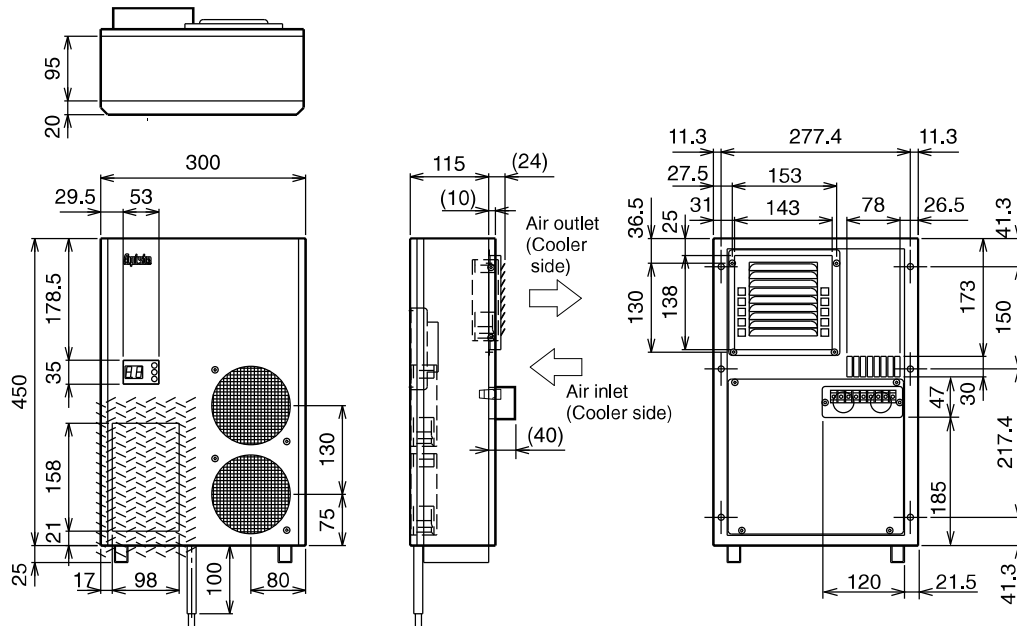
*3: CE Marking requirements

7 Outer Dimensions

<Lateral-mount Type>

(unit : mm)

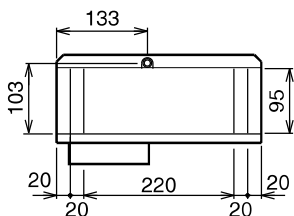
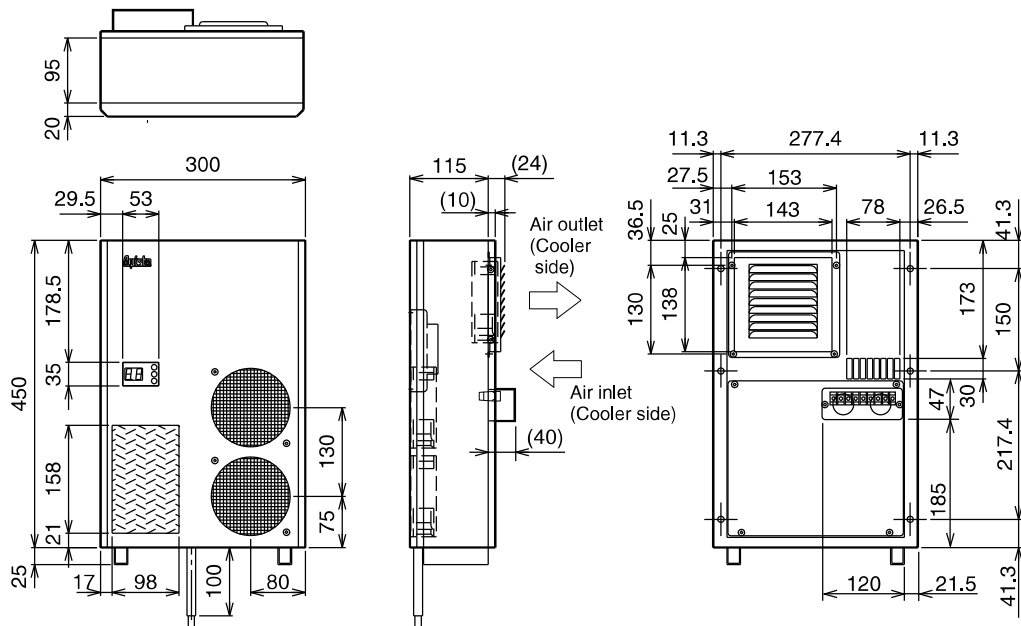
ENC-AR422L-CU



<Terminal block>

Power supply : L, N, PE
 Alarm output : ERR, COM
 Cooling operation output : RUN, COM

ENC-AR452L-CU



<Terminal block>

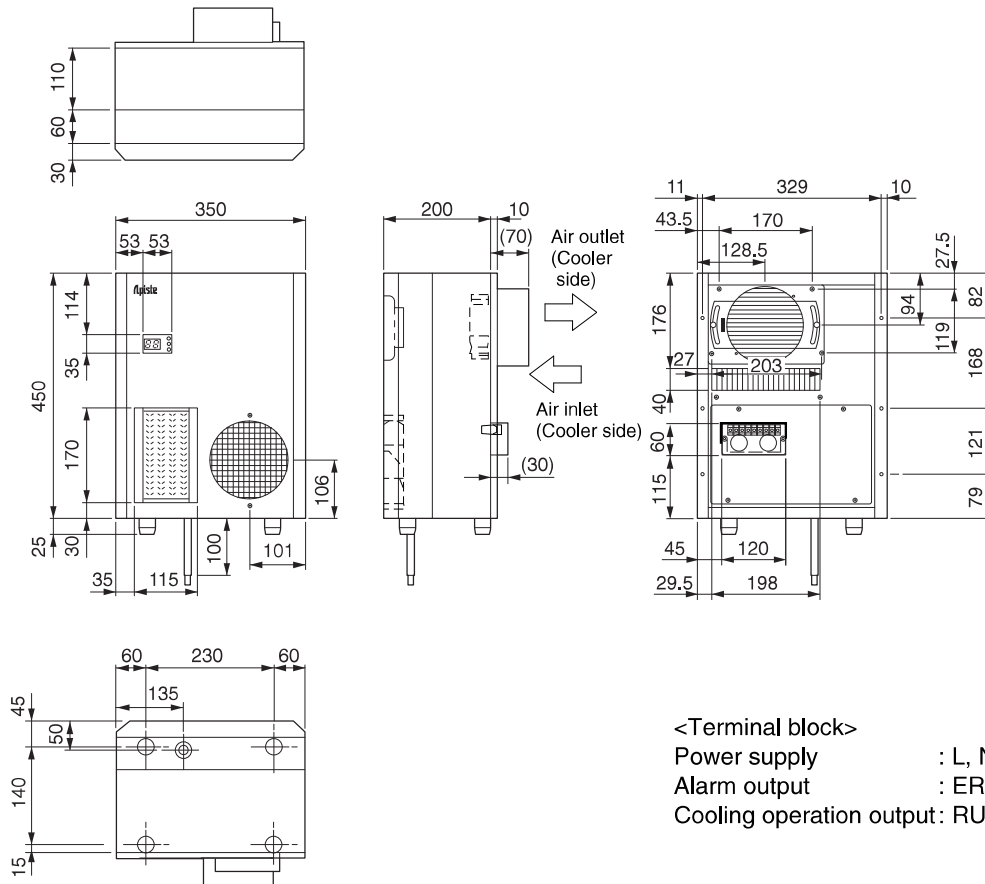
Power supply : L, N, PE
 Alarm output : ERR, COM
 Cooling operation output : RUN, COM

7. Outer Dimensions

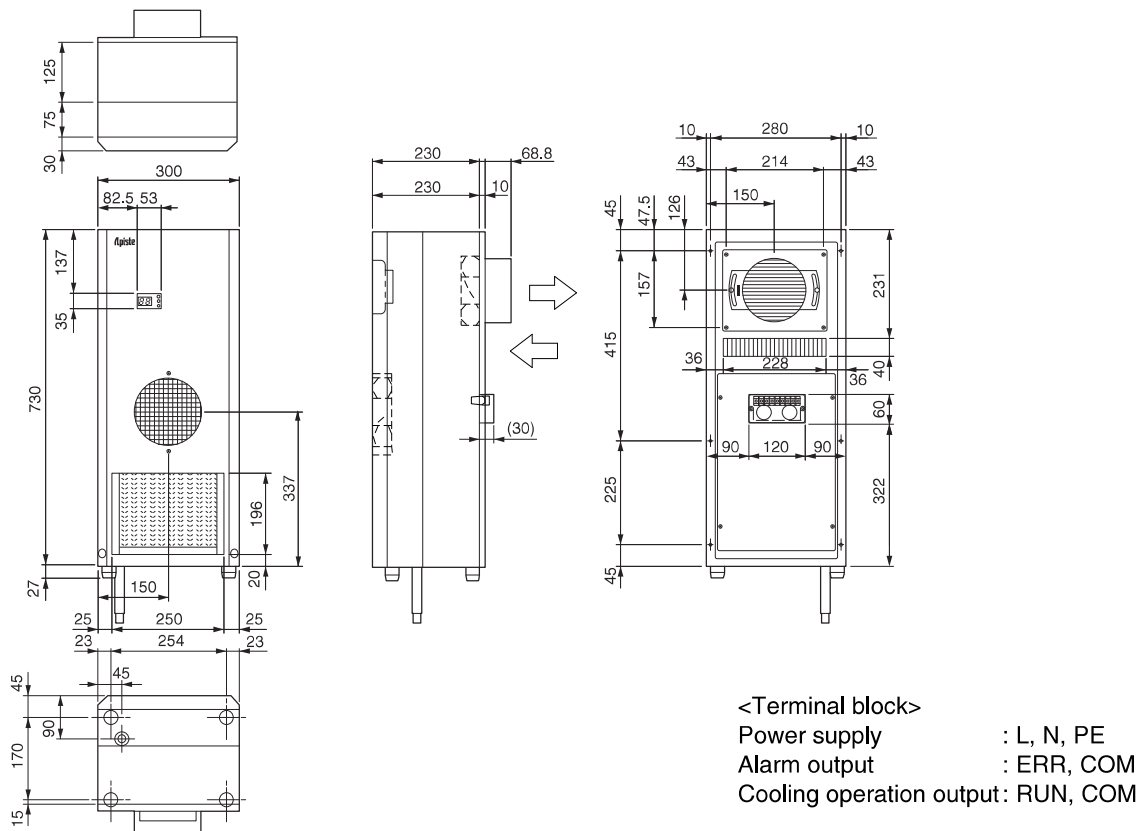
<Lateral-mount Type>

(unit : mm)

ENC-AR620L-CU



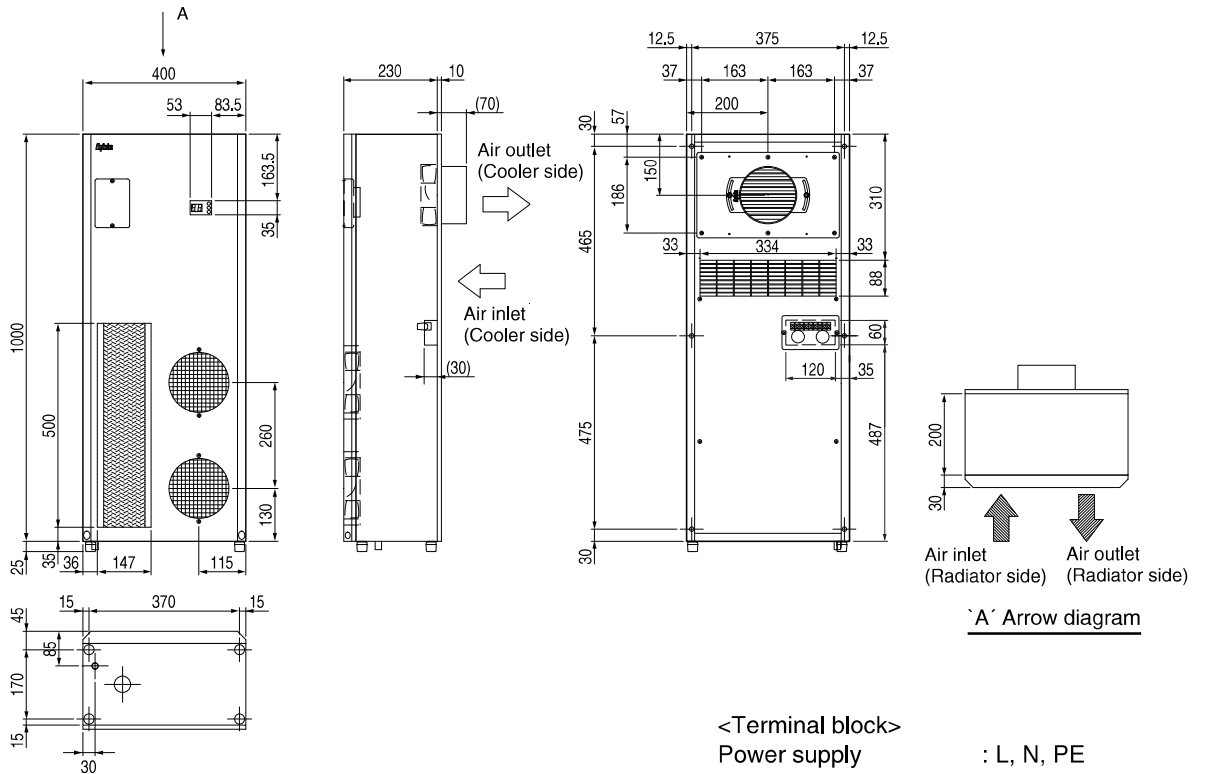
ENC-AR1120L-CU



7. Outer Dimensions

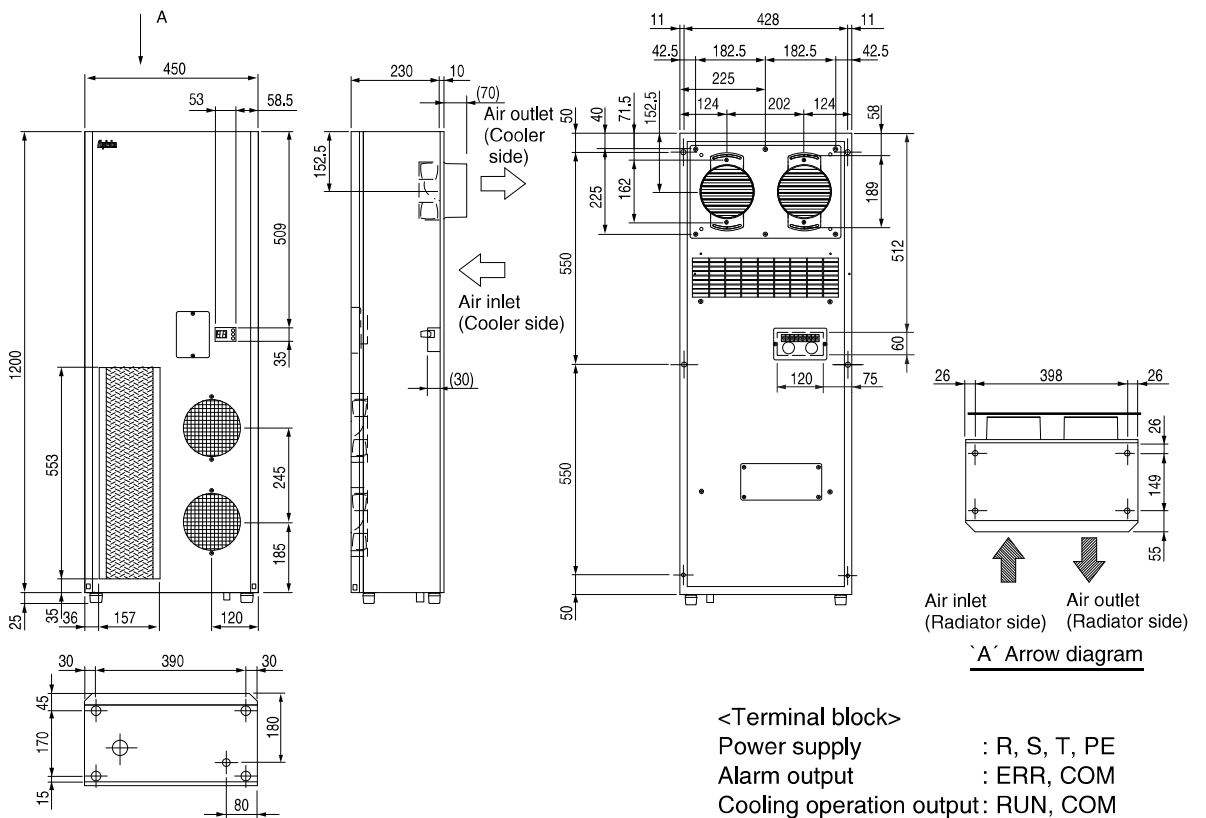
<Lateral-mount Type> ENC-AR1652L-CU

(unit : mm)



<Terminal block>
 Power supply : L, N, PE
 Alarm output : ERR, COM
 Cooling operation output : RUN, COM

ENC-AR2200L-CU

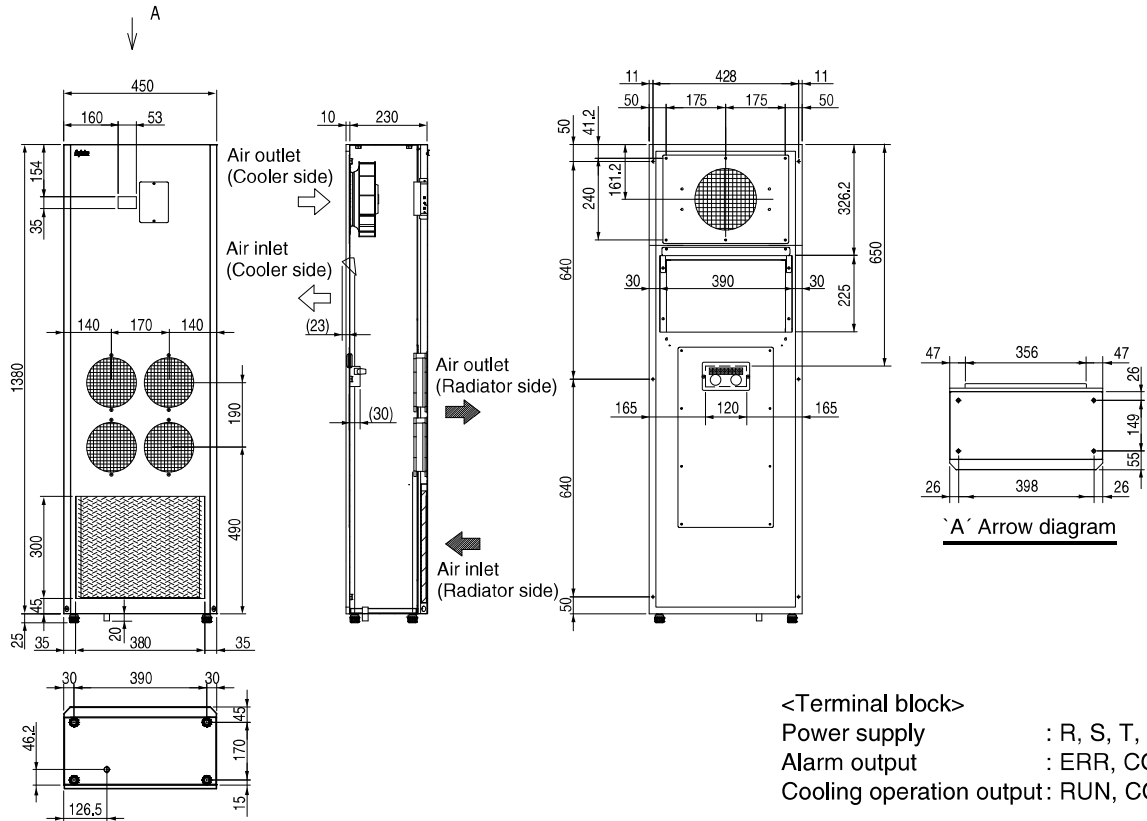


<Terminal block>
 Power supply : R, S, T, PE
 Alarm output : ERR, COM
 Cooling operation output : RUN, COM

7. Outer Dimensions

<Lateral-mount Type>
ENC-AR2900L-CU

(unit : mm)



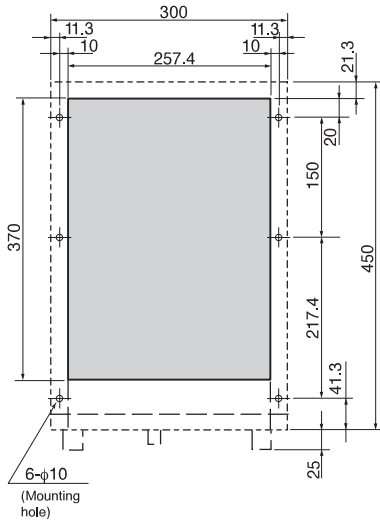
8

Diagram of Installation Work (Panel Work)

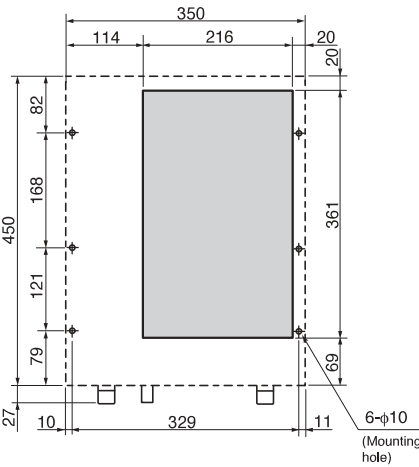
Note: Perspective plane diagram (Work diagram viewed from the outside mounting surface)

(unit : mm)

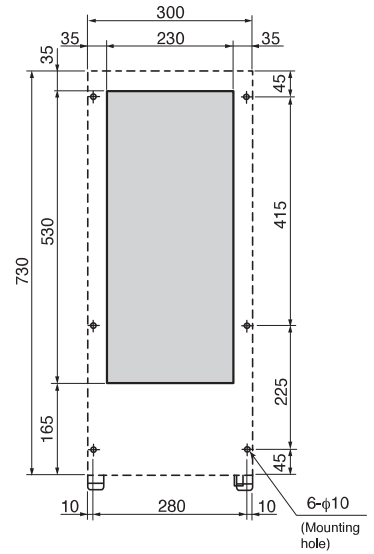
ENC-AR422L-CU
ENC-AR452L-CU



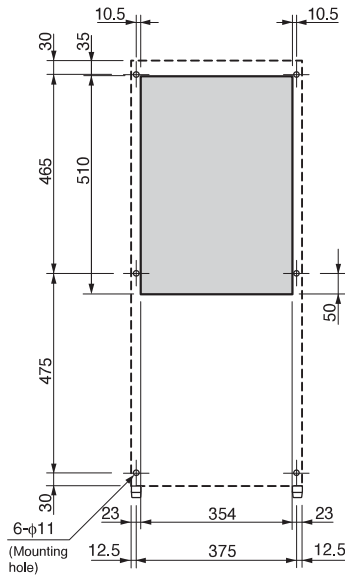
ENC-AR620L-CU



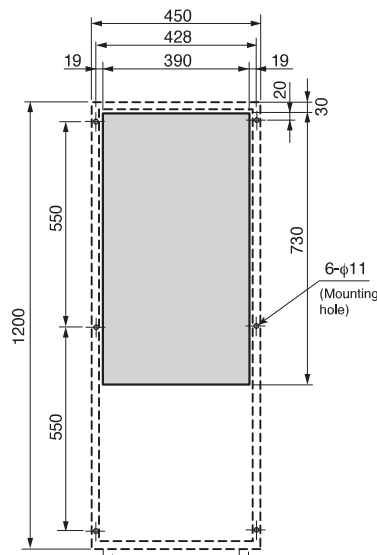
ENC-AR1120L-CU



ENC-AR1652L-CU



ENC-AR2200L-CU



ENC-AR2900L-CU

