

# Product Overview



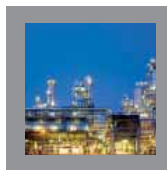
Based in Charlotte, North Carolina, SPX Corporation (NYSE: SPW) is a global Fortune 500 multi-industry manufacturing leader. The company's highly-specialized, engineered products and technologies serve customers in three primary strategic growth markets: infrastructure, process solutions, and diagnostic systems. Many of SPX's innovative solutions are playing a role in helping to meet rising global demand, particularly in emerging markets, for electricity, processed foods and beverages, and vehicle services. The company's products include thermal heat transfer equipment for power plants; power transformers for utility companies; process equipment for the food & beverage industry; and diagnostic tools and equipment for the vehicle service industry. For more information, please visit <http://www.spx.com/>.

## > Bran+Luebbe®

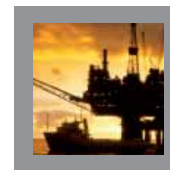
For more than 75 years, Bran+Luebbe - now SPX Flow Technology – has been providing customers with high quality metering, processing and analysing equipment. As part of the global SPX Corporation, we are one of the world's most reputable manufacturers of metering and process pumps, process systems as well as analyzing technologies. Our engineers have comprehensive process and applications knowledge across a wide range of markets. This has resulted in product innovations and developments which harness the latest technology whilst meeting the highest quality standards.



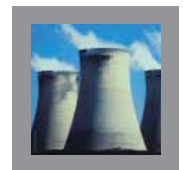
## Markets served



**CHEMICAL INDUSTRY**



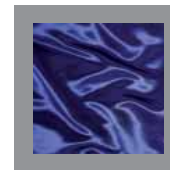
**OIL & GAS**



**POWER GENERATION**



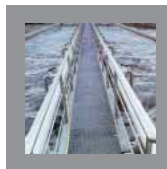
**PHARMACEUTICAL INDUSTRY  
& BIOTECHNOLOGY**



**TEXTILE INDUSTRY**



**HOUSEHOLD DETERGENTS  
& PERSONAL CARE**



**WATER TREATMENT**

# ProCam Metering Pumps

The ProCam modular building block system allows single and multi stream pumps to provide an economical and reliable solution for a wide range of metering applications.

## ProCAM SMART

Standard, economic single stream pump to handle even hazardous liquids with no special requirements.

**Flow range:** 5 to 500 l/h  
**Operating Pressure:** up to 20 bar\*

## ProCAM DIAPHRAGM/PLUNGER PUMP

Engineered, single or multi stream pump designed to meet specific application requirements.

*Diaphragm pump\*:*

**Flow range:** up to 3,000 l/h  
**Operating Pressure:** up to 20 bar\*

*Plunger Pump\*:*

**Flow range:** 0.16 to 60.5 l/h  
**Operating Pressure:** up to 80 bar\*

## ProCAM HYGIENIC

For stringent hygienic and sterile applications, this pump is suitable for CIP and is certified to EHEDG (European Hygienic Engineering and Design Group) and 3A Sanitary Standards.

**Flow range:** 5 to 500 l/h  
**Operating Pressure:** up to 20 bar\*

## ProCAM COMPACT METERING STATION

Compact design - ProCam metering pump and metering station allows easy preparation of products to be metered.

**Flow range:** 5 to 500 l/h  
**Operating Pressure:** up to 20 bar\*  
**Tank size:** 60 to 500 l



\* for specific types and designs

# NOVADOS Metering Pumps

The NOVADOS offers an unparalleled range of metering pumps for an extensive number of liquid metering or blending applications.



## NOVADOS DIAPHRAGM PUMPS

Robust pump with outstanding performance parameters to suit applications using hermetically sealed pump heads to handle hazardous liquids.

**Flow range:** 400 ml/h to 10,000 l/h  
**Operating Pressure:** up to 1,000 bar\*

## NOVADOS PLUNGER PUMPS

Using the same drive design as for diaphragm pumps, the plunger pump head option can be considered for less demanding applications.

**Flow range:** 400 ml/h to 10,000 l/h  
**Operating Pressure:** up to 500 bar\*

## NOVADOS PUMPS WITH DOUBLE-ACTING DIAPHRAGM PUMP HEAD

Twice the flow of a traditional diaphragm pump head it removes the need for a duplex design, reducing footprint and weight. Equipped with a suction pressure module as special option it is suitable for low energy recirculation processes.

## MODULAR BUILDING BLOCK - HORIZONTAL AND VERTICAL CONFIGURATION

Combination of diaphragm or plunger pumps for multi-stream applications with gears and pump heads matching the specifications of the customer.



# NOVAPLEX Process Diaphragm Pumps

The Bran+Luebbe NOVAPLEX is a flexible high performance process diaphragm pump handling toxic or aggressive liquids and suspensions at high flow rates and pressure. Typical applications can be found in the chemical, petrochemical as well as oil & gas industries.

## NOVAPLEX VECTOR

A revolutionary design in the market for diaphragm process pumps! This design has a unique layout that offers a more compact pump.

**Flow range:** upon request  
**Operating Pressure:** up to 400 bar\*

## NOVAPLEX INTEGRAL

NOVAPLEX Integral diaphragm process pumps are powerful and exact feed pumps in processes where high capacities and/or high operating pressures are required. Equipped with an integrated reduction gear the pumps are very compact with a small foot print.

**Flow range:** up to approx. 60 m<sup>3</sup>/h  
**Operating Pressure:** up to 1,000 bar\*

## NOVAPLEX CLASSIC

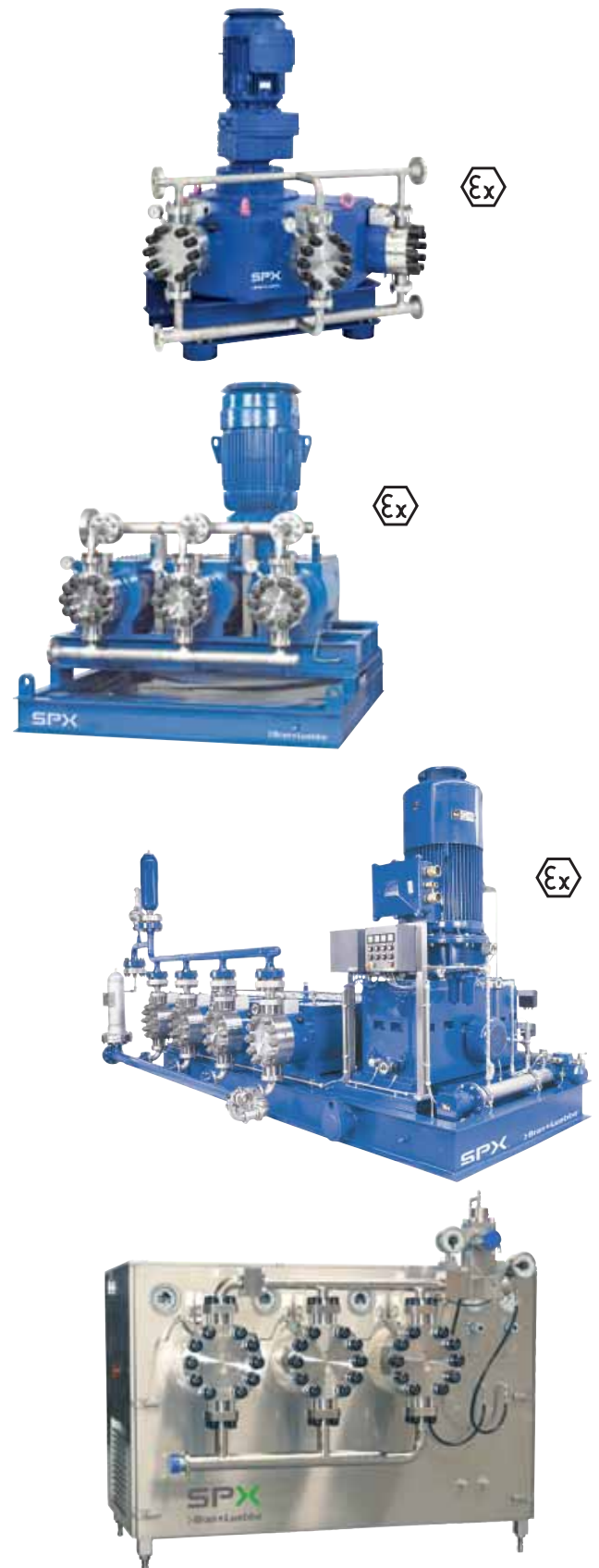
Designed with an external reduction gear this pump allows the incorporation of customer specified gearboxes.

**Flow range:** up to approx. 80 m<sup>3</sup>/h  
**Operating Pressure:** up to 1,000 bar\*

## MEGANIZER

High pressure homogenizer based on the NOVAPLEX hermetically sealed process diaphragm pumps with single or double-stage homogenizing head.

**Flow range:** depending on pressure rating  
up to approx. 30m<sup>3</sup>/h  
**Operating Pressure:** 150 to 1,000 bar\*



\* for specific types and designs

# AutoBlend Process Systems

Process units designed for high quality products blended from liquids, pastes and dissolved powders.

## OUR CORE COMPETENCE:

- Dilution of chemicals
- Production of personal care products and household detergents
- Systems in paper production
- Continuous dilution of ether sulphate paste
- Systems in water treatment plants
- Production plants for industrial cleaners and cooling agents
- Oil & Gas



## TYPICAL SYSTEMS\*:

### CHEMICAL INDUSTRY

Preparation and metering of cold-coating agent for glass containers. Specifically pharmaceutical phials need internal coating to meet the quality requirements of scratch-free internal surface.

### PERSONAL CARE AND HOUSEHOLD DETERGENTS

The production of shampoos, shower gels, heavy and standard liquid detergents, fabric softener, and household detergents require an exact metering and suitable mixing process in order to meet the stringent specifications. Using high quality SPX components the customer can rely on constant quality, low operating cost, reduced maintenance and high availability of the system.

### WATER TREATMENT

Treating boiler feed water is a major task in power plants (conventional and nuclear) and district heating. We supply customer specified plants for various applications.

### OIL & GAS INDUSTRY

Within the Oil and Gas Industry, the requirements for Chemical Injection Packages are very diverse depending on the application, location, number of chemicals, multi-point injection, increases in production output and changes in production conditions. We supply basic single chemical / single injection point skids to multi-ingredient chemical storage and pumping packages.

\* more applications on request

# Mixers

Static or dynamic in-line mixers are available for a variety of operations covering a wide range of applications.

## PENTAX - DYNAMIC MIXER

The dynamic in-line PENTAX mixer is designed to meet the demands of industrial markets. An hygienic option is also available. Both designs incorporate the following characteristics :

- High reliability and trouble-free operation due to the robust design
- Stator and rotor mixing system ensures a constant and stable mixing result
- Various options of materials for mechanical seals, gaskets, and drives are available to meet specific process requirements

**Throughput:** up to 50,000l/h\*  
**Operating Pressure:** up to 10 bar

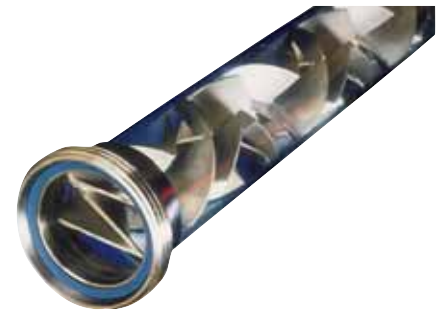
\* special designs on request

## N-FORM - STATIC MIXER

Simple and robust with no moving parts for trouble-free operation.

- Materials: SS 1.4571 / 1.4581\*
- Diameters: DN 15 to DN 65
- Connection: as required
- Heating/cooling: jacketing possible
- The mixing elements can be removed for cleaning and inspection.

\* special designs on request.



# Analyzers

With a wide range of process analyzers and an experienced team, Bran+Luebbe is an internationally recognised brand. The latest technology, reliable service and support are offered for the water and waste water treatment industries.



## POWERMON

The PowerMon is the latest development in the Bran+Luebbe fully automatic on-line process analyzer family. The measuring range reaches from normal concentrations down to traces by using wet-chemical reactions. Fully automatic operation, self-monitoring, and automatic recalibration make them an ideal on-line process analyzer.

### PowerMon Titrometer

$\text{BO}_3^{3-}$ , hardness,  $\text{H}_2\text{O}_2$ , peracetic acid, acidity (p/m-value),  $\text{S}^{2-}$

### PowerMon Kolorimeter

$\text{Al}^{3+}$ ,  $\text{Cl}_2$ ,  $\text{ClO}_2$ ,  $\text{Cr}^{6+}$ , Co,  $\text{CN}^-$ ,  $\text{Cu}^{2+}$ ,  $\text{Fe}^{2+/3+}$ , Hazen,  $\text{Mn}^{2+}$ ,  $\text{N}_2\text{H}_4$ ,  $\text{NH}_4^+$ ,  $\text{Ni}^{2+}$ ,  $\text{NO}_3^-$ ,  $\text{NO}_2^-$ , Phenol,  $\text{PO}_4^{3-}$ , TP,  $\text{S}^{2-}$

### PowerMon Silikometer

$\text{SiO}_2$

### PowerMon Natriometer

$\text{Na}^+$

### PowerMon Ionometer

$\text{CO}_2$ ,  $\text{Cl}^-$ ,  $\text{K}^+$ ,  $\text{NH}_4^+$ ,  $\text{F}^-$ ,  $\text{NO}_3^-$



## POWERMON S

The PowerMon S is a compact closed multi-component analyzing system. Based on spectrometry it is an easy-to-handle economic system.

- Multi-component on-line analyzer
- Measured components: total nitrogen, total phosphate, DOC, CSB
- Measurement of  $\text{NH}_4^+-\text{N}$  /  $\text{NO}_3^--\text{N}$  /  $\text{PO}_4^{3--}\text{P}$
- Used in waste-water treatment plants, rivers, lakes, and coastal areas



**SPX FLOW TECHNOLOGY NORDERSTEDT GMBH SERVICES THE FOLLOWING SPX BRANDS:**

› **Bran+Luebbe®**

› **Johnson Pump®**

› **Lightnin®**

› **Plenty®**

› **Waukesha  
Cherry-Burrell®**

**You can contact us by phone under:**

**SERVICE**

Hotline	+49 40 52202 - 405
Service Technician	+49 40 52202 - 428
Technical Information	+49 40 52202 - 237 /-360
Repairs at Bran+Luebbe	+49 40 52202 - 407
Fax	+49 40 52202 - 447

**SPARE PARTS**

Offers	+49 40 52202 - 335
Order Handling	+49 40 52202 - 336
Fax	+49 40 52202 - 454
E-Mail	servicepumpen@spx.com

**Global locations**

**EMEA**

**SPX FLOW TECHNOLOGY**

Werkstraße 4  
D-22844 Norderstedt  
Phone: +49 (0) 40 - 522 02 -0  
Fax: +49 (0) 40 - 522 02 -444  
E-Mail: branluebbe@spx.com

**SPX FLOW TECHNOLOGY**

Ironstone Way  
Brixworth, Northants, NN6 9UD  
Phone: +44 (0) 1604 880751  
Fax: +44 (0) 1604 880145  
E-Mail: branluebbe@spx.com

**AMERICAS**

**SPX FLOW TECHNOLOGY**

611 Sugar Creek Road  
Delavan, WI 53115 USA  
Phone: +1 (800) 252-5200 or  
+1 (262) 728-1900  
Fax: +1 (262) 728-4904  
E-Mail: branluebbe@spx.com

**APAC**

**SPX FLOW TECHNOLOGY**

25 International Business Park  
#03-03/12, German Centre,  
Singapore 609916  
Phone: +65 6568 1568  
Fax: +65 6265 9133  
E-Mail: asia.pacific@spx.com

**SPX FLOW TECHNOLOGY NORDERSTEDT GMBH**

Werkstraße 4  
D-22844 Norderstedt  
Phone: +49 (0) 40 - 522 02 -0  
Fax: +49 (0) 40 - 522 02 -444  
E-Mail: branluebbe@spx.com

SPX reserves the right to incorporate our latest design and material changes without notice or obligations.

Design features, materials of construction and dimensional data, as described in this bulletin, are provided for your information only and should not be relied upon unless confirmed in writing. Please contact your local sales representative for product availability in your region. For more information visit [www.spx.com](http://www.spx.com).

"The green ">" is a trademark of SPX Corporation, Inc."