

The complete solution



The BC PREMIUM label guarantees "The complete solution", with many options and possible configurations to fit at best very specific needs. Decades of return on experience from very demanding applications such as nuclear qualified valves actuation have shaped our technical orientations and our commitment to quality and safety.

The BC PREMIUM label reflects this long-lasting experience and in-depth expertise, working with the most demanding markets, where the ability to design customized solutions has always been decisive. It is the guarantee of quality and security for installations' actuation in the case of **severe environment, demanding operational constraints and critical applications.**

BERNARD CONTROLS renews its range of multi-turn actuators by offering a new design entirely revamped to closely fit market needs. This fully new concept has been designed as a modular platform with many options to offer you the perfect solution to your need for easy and safe management of the most demanding applications.

LABEL



BERNARD CONTROLS GROUP

CORPORATE HEADQUARTERS

4 rue d'Arsonval - CS 70091 / 95505 Gonesse CEDEX France / Tel. : +33 (0)1 34 07 71 00 / Fax : +33 (0)1 34 07 71 01 / mail@bernardcontrols.com

CONTACT BY OPERATING AREAS

> AMERICAS

NORTH AMERICA
BERNARD CONTROLS UNITED STATES
HOUSTON
inquiry.usa@bernardcontrols.com
Tel. +1 281 578 66 66

SOUTH AMERICA
BERNARD CONTROLS LATIN AMERICA
inquiry.southamerica@bernardcontrols.com
Tel. +1 281 578 66 66

> ASIA

CHINA
BERNARD CONTROLS CHINA &
BERNARD CONTROLS CHINA NUCLEAR
BEIJING
inquiry.china@bernardcontrols.com
Tel. +86 (0) 10 6789 2861

KOREA
BERNARD CONTROLS KOREA
SEOUL
inquiry.korea@bernardcontrols.com
Tel. +82 (0)2 553 6957

SINGAPORE
BERNARD CONTROLS SINGAPORE
SINGAPORE
inquiry.singapore@bernardcontrols.com
Tel. +65 65 654 227

> EUROPE

BELGIUM
BERNARD CONTROLS BENELUX
NIVELLES (BRUSSELS)
inquiry.belgium@bernardcontrols.com
inquiry.holland@bernardcontrols.com
Tel. +32 (0)2 343 41 22

FRANCE
BERNARD CONTROLS FRANCE &
BERNARD CONTROLS NUCLEAR FRANCE
GONESSE (PARIS)
inquiry.france@bernardcontrols.com
Tel. +33 (0)1 34 07 71 00

GERMANY
BERNARD CONTROLS DEUFRA
TROISDORF (KÖLN)
inquiry.germany@bernardcontrols.com
Tel. +49 2241 9834 0

ITALY
BERNARD CONTROLS ITALIA
RHO (MILANO)
inquiry.italy@bernardcontrols.com
Tel. +39 02 931 85 233

RUSSIA
BERNARD CONTROLS RUSSIA
inquiry.russia@bernardcontrols.com
Tel. +33 (0)1 34 07 71 00

SPAIN
BERNARD CONTROLS SPAIN
MADRID
inquiry.spain@bernardcontrols.com
Tel. +34 91 30 41 139

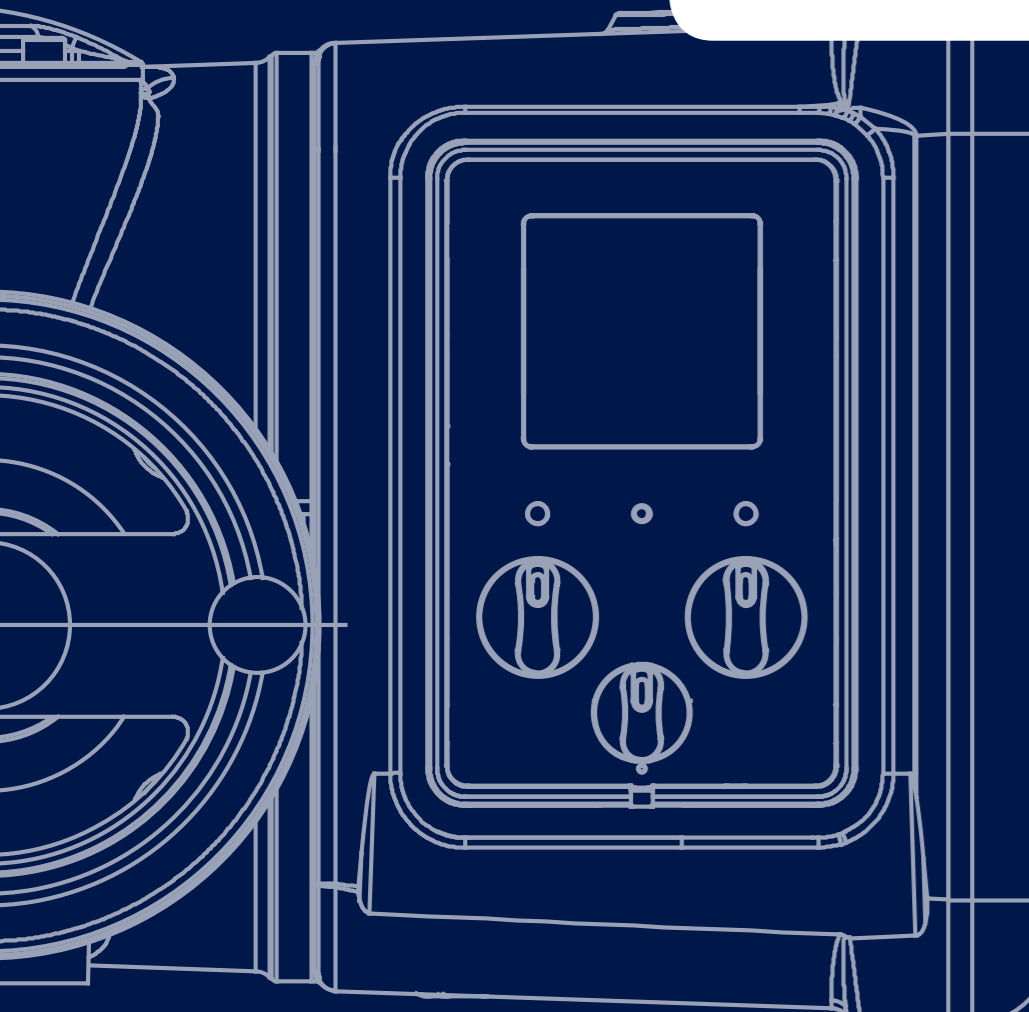
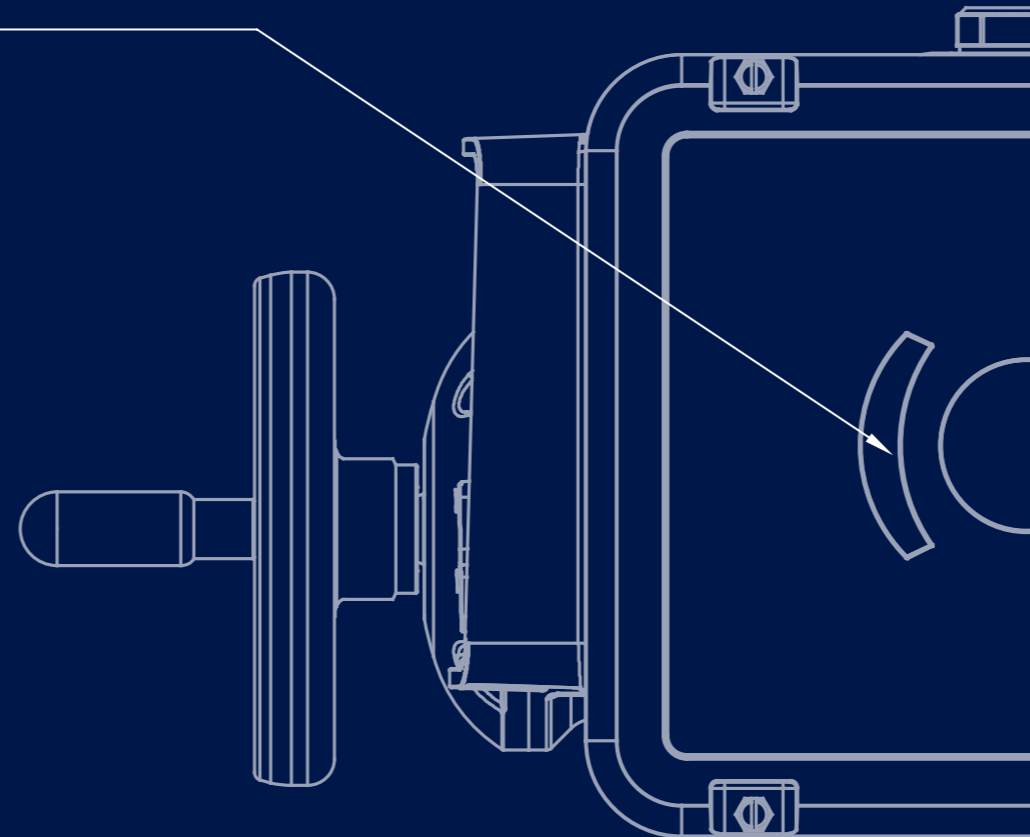
UNITED KINGDOM
BERNARD CONTROLS UNITED KINGDOM
inquiry.uk@bernardcontrols.com
Tel. +44 (0)7435 266310

> INDIA, MIDDLE EAST & AFRICA

AFRICA
BERNARD CONTROLS AFRICA
ABIDJAN - IVORY COAST
inquiry.africa@bernardcontrols.com
Tel. + 225 21 34 07 82

INDIA
BERNARD CONTROLS INDIA
inquiry.india@bernardcontrols.com
Tel. +971 4 880 0660

MIDDLE-EAST
BERNARD CONTROLS MIDDLE-EAST
DUBAI - U.A.E.
inquiry.middleeast@bernardcontrols.com
Tel. +971 4 880 0660



//////// Invest in Confidence // //

New

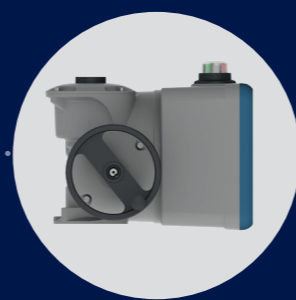
Weatherproof
Multi-turn Actuators
BT RANGE



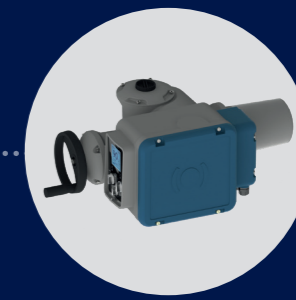
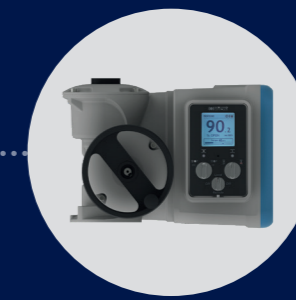
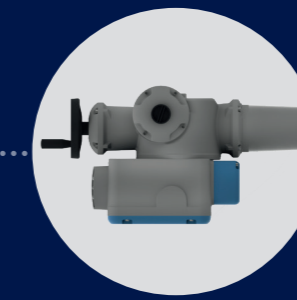
CAT02-10-ENG-GRP_rev01d
All data in this brochure are given for information only and are subject to change without notice.
This document and the contents here of are proprietary to Bernard Controls. It can be amended
and changed without prior notice. Any unauthorized reproduction is strictly prohibited.

> BT range

The complete solution for multi-turn electric actuation



BT3 - BT6L - BT6 - BT14 - BT25 - BT50 SWITCH version

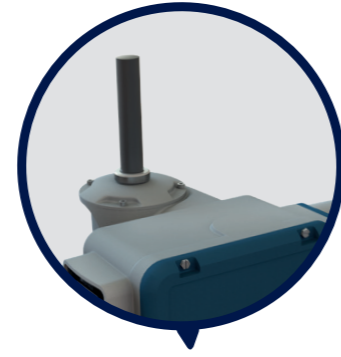


BT3 - BT6L - BT6 - BT14 - BT25 - BT50 LOGIC / INTELLI+ version

Product overview

Wide Stem Acceptance

- > suitable for rising stem thanks to a removable screw cap
- > easy & watertight fixation of the stem cover



Large LCD display

Easily orientable in few clicks on the BC APP or through local commands



Declutch-free handwheel

- > with motor priority
- > with foldable handle
- > with double ratio as an option



New mobile application BC App

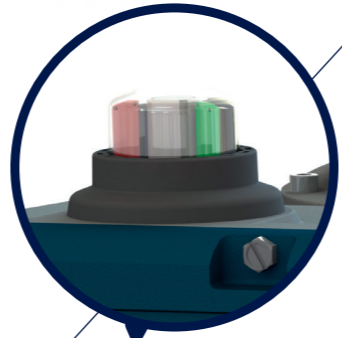
"Set up your actuator and more in a few clicks!"

- > Set up & Operate your actuator using your mobile phone
- > Get access to clear descriptions of alarms, troubleshooting functions, documentation, Bernard Controls Assistance
- > Upload & change the full actuator configuration in one step
- > Even complex settings are made easier



Mechanical position indicator

- > Standard on SWITCH versions
- > As an option on LOGIC & INTELLI+® versions
- > Easy & quick customization of color indication & orientation from the outside



User-friendly wiring system

- > New terminal plate: easy wiring with identified function per pin whatever the options of your product
- > Quick connector option for easy maintenance



Product specifications

- 30 to 500 Nm (direct) & up to 8,000 Nm on request
- 10 to 180 rpm (direct)
- Type of Controls:
 - > Electromechanical SWITCH
 - > Integrated LOGIC (V2)
 - > Integrated INTELLI+® (V3)
- Wiring: Double-sealing as standard
 - > New terminal plate
 - > Quick Connector as an option
- BC Duty & Modulating Classification
 - > On-Off: Class A+
 - > Inching/Positioning: Class B+
 - > Modulating: Class III+
- IP68
- Corrosive environment: C4 (up to C5-M)
- Operating temp.: -20...+70°C (Low T° option -60°C / High T° option +90°C for SWITCH versions only)

User-friendly local commands

through 2 buttons + 1 padlockable selector

Heavy duty design

Full aluminium enclosure protected by durable powder coating Grey & Azure Blue

Product benefits

MODULARITY DEDICATED TO PERFORMANCE

• Innovative, reliable & unique design

- > Fully new and unique design for Multi-turn actuation based on market requirements and BC design experience and methodology
- > Product architecture, torque range and speed range adapted to customers' requirements
- > Heavy duty design: IP68, double-sealing protection, powder coating (up to C5-M), low and high temperature versions (down to -60°C and up to +90°C as an option)
- > Innovative features: new camblock system unaffected by vibration, adjustable torque sensor, new design with internal modularity for compact solution, modular position sensor up to 5000 turns...

• Enhanced performance for the most-demanding conditions

- > From 30Nm (adjustable to 12Nm) to 500Nm (direct) and more with gearboxes
- > Wide range of speed up to 180rpm to address all types of applications
- > Wide stem acceptance with an easy to install and watertight stem cover
- > Self-locking at all speed without any additional component*
- > High resolution modulating Class III+ (Duty Performance and Endurance Higher Level than Standard EN15714-2)
- > S4 Motor Service Duty on all models

• Easy to install & maintain

- > Easy commissioning: set up of travel limitation system with a standard screwdriver on SWITCH version, non-intrusive setting for LOGIC and INTELLI+® versions, quick connector option, configurable relays on electronic versions...
- > Large LCD display on electronic versions for user-friendly commissioning and local commands. Easily orientable (4-way direction) in few clicks
- > Declutch-free manual override for quick intervention on site with double ratio as an option
- > Mechanical position indicator: check the position of your valve at a glance even in case of power cut
- > BC APP: Bernard Controls new mobile application for setting, operating, troubleshooting and easy access to documentation
- > Fieldbus available as an option, including common market standard protocols : Profibus (DPV1, Simple or Redundant), Modbus (Simple or Redundant)...

• INTELLI+® advanced control solution

- > User-friendly and intuitive controls with LCD display that gives a clear status of the actuator and of the control system
- > Advanced monitoring and diagnostic functions of INTELLI+® Integrated Control: Emergency Shut Down (ESD), Partial Stroke Test (PST), programmable timer, alarm customization, programmable signaling relays, operation monitoring...



*except BT25 and BT50 at 127rpm and 180rpm



Full range description, product specifications and technical data on BERNARD CONTROLS' website.