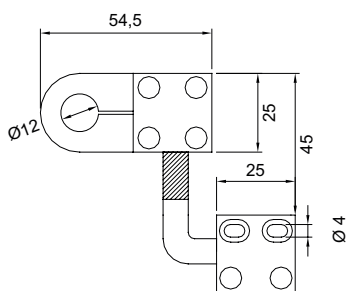


ACCESSORIES

Brackets for laser pointers

Type

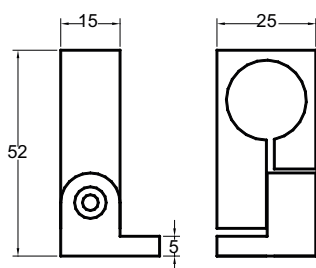
SF010418



Features

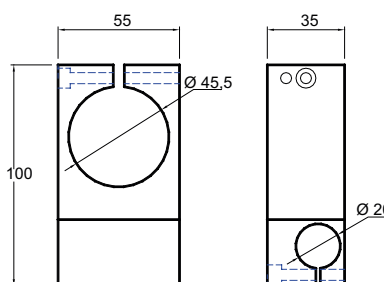
Bracket for laser pointer Ø 12, with adapter included in the package.

SF010423



Bracket for laser pointer Ø 20.

SF010419



Bracket for laser pointer Ø 45.

Ed. 06/17 - All specifications are subject to change without notice

Glasses for laser pointers

Type

OP001



Features

Protection glasses for laser pointers, CE marked.
This glasses provides the following optical protections:
range from 600 to 680nm, optical density = 1
range from 660 to 680nm, optical density = 3

ACCESSORIES

Power supply

Type

SM516001



Features

Input voltage: 85~264 Vac - 120~370 Vdc
0,33 A/115 Vac - 0,21 A/230 Vac
Output voltage: 5,0 Vdc - 2A

SM516002

Input voltage: 85~264 Vac - 120~370 Vdc
0,33 A/115 Vac - 0,21 A/230 Vac
Output voltage: 24,0 Vdc - 0,42A

Female connectors

Type

C8IF3A 5M



Features

M8 - 3 poles - straight - 5 m PVC 3x0,25

C8LF3A 5M



M8 - 3 poles - angled - 5 m PVC 3x0,25

C12IF4A 5M



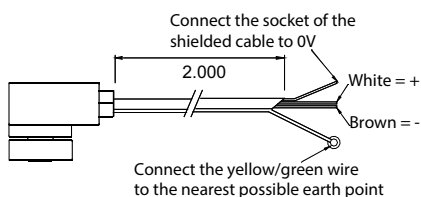
M12 - 4 poles - straight - 5 m PVC 4x0,25

C12LF4A 5M



M12 - 4 poles - angled - 5 m PVC 4x0,25

SM515001



M12 - 4 poles - angled - 2 m shielded cable + ground wire