

Advantages:

- ✓ High support forces
- ✓ Inner parts of stainless steel
- ✓ Metal wiper as option
- ✓ Perfect coolant protection
- ✓ Expandable with accessories
- ✓ Partially compatible to competitive products

Recommendations for use

Support elements act as a variable clamping points for supporting workpieces during machining and avoid/reduce the vibrations and deflections.

For space-saving the threaded-body design allows the direct installation into the fixture body. The hydraulic oil supply and the ventilation effected through drilled channels.

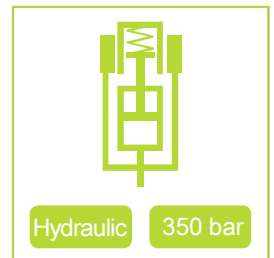
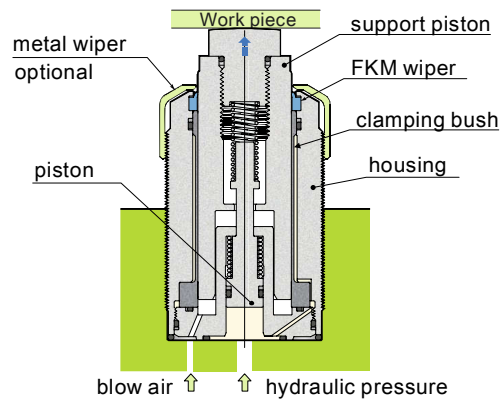
Description

The - integrated in the housing - clamping bush, clamps the movable plunger when it is pressurized. But in advance this plunger is moved by the pressure connection, against the workpiece.

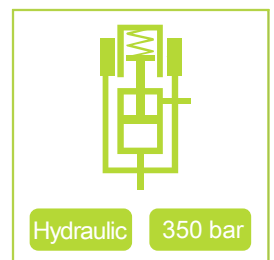
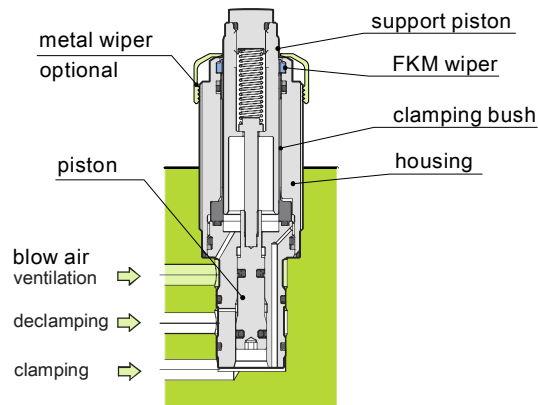
The penetration of liquids is prevented by a FKM wiper.

An optional metallic wiper provides another reliable protection against the penetration of hot chips. If required, the ventilation connecting can be pressurized with blow air.

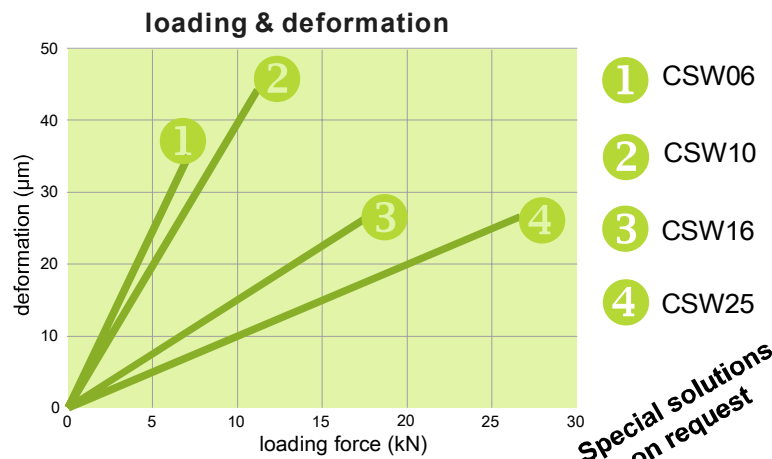
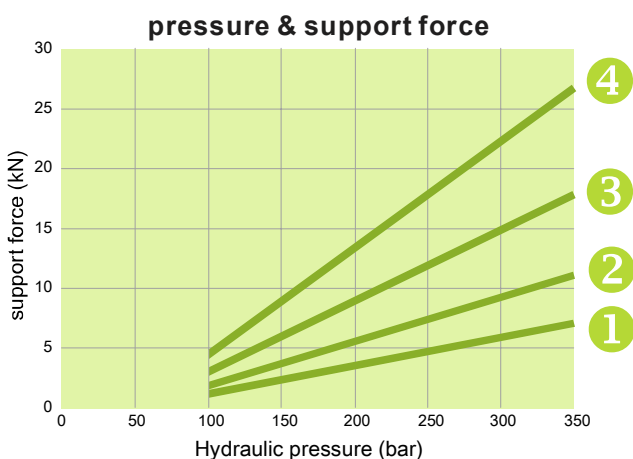
CSW single acting



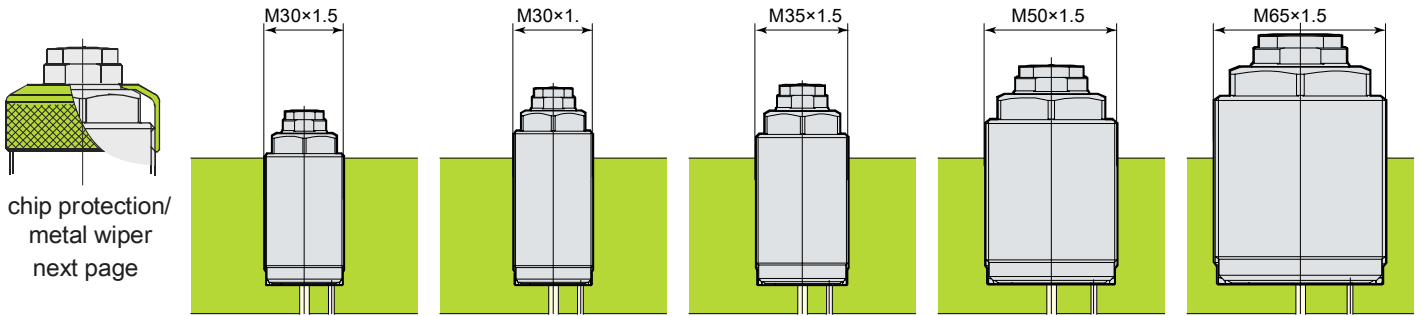
CSW-D double acting



Pressure/force ratio

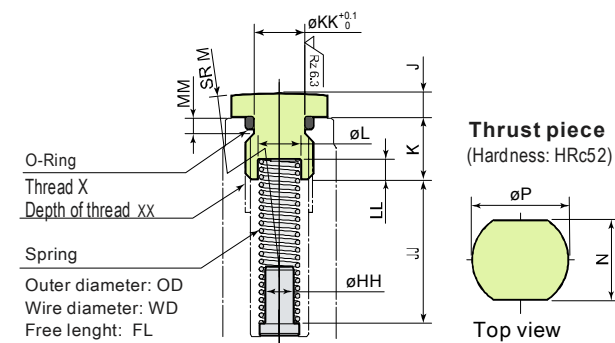
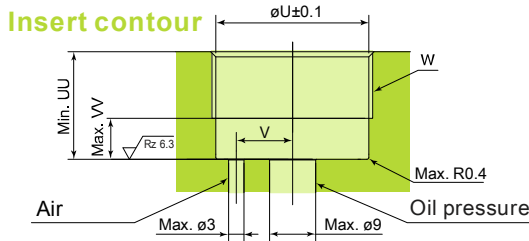
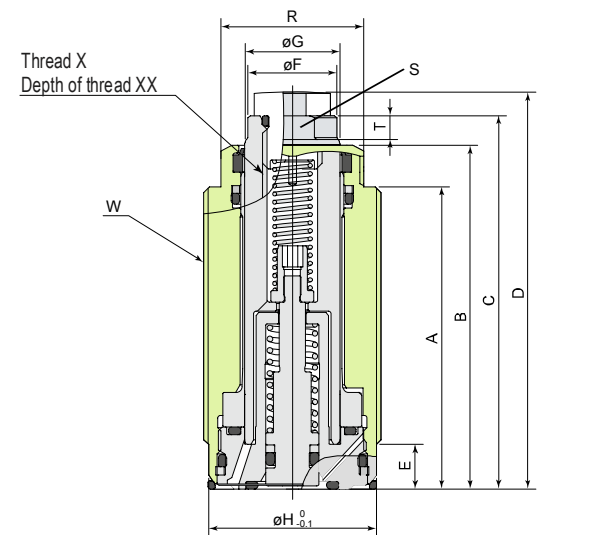


Special solutions on request



chip protection/
metal wiper
next page

Type	CSW06M-L	CSW06M-D	CSW10M-L	CSW16M-L	CSW25M-L
stroke	8 mm	15 mm	10 mm	10 mm	13 mm
feeding force-spring	6-11 N	4-11 N	10-16 N	16-29 N	25-45 N



Type	CSW06M-L	CSW06M-D	CSW10M-L	CSW16M-L	CSW25M-L
A	51	58	58	59.5	68.5
B	58	65	67	71.8	82
C	63	70	73	78	89
D	67	74	77	84	96
E	7.5	7.5	7.5	7.5	8
F	15	15	19	29	39
G	16	16	20	30	40
H	28.3	28.3	33.2	48.2	63.2
HH	5	5	5	6	7.5
J	4	4	4	6	7
JJ	20.5	21.3	25.5	25	32.5
K	9	9	11	12	11
KK	7.8	7.8	8.9	13.3	13.3
L	7.4	7.4	7.6	9.2	11.2
LL	1.5	1.5	3.5	1.5	1.5
M	70	70	90	110	140
MM	1.9	1.9	3	2.4	2.4
N	12	12	14	19	24
P	12.9	12.9	16.9	23	30
R	24	24	30	41	55
S	13	13	17	24	32
T	4	4	5	5	5.7
U	28.5	28.5	33.5	48.5	63.5
UU	15.5	15.5	15.5	15.5	20
V	11	11	12	18	23.5
VV	6.5	6.5	6.5	6.5	7
W	M30×1.5	M30×1.5	M35×1.5	M50×1.5	M65×1.5
X	M10×1.5	M10×1.5	M12×1.75	M16×2	M16×2
XX	13	13	16	20	20
Housing, Torque	35 N·m	35 N·m	60 N·m	130 N·m	250 N·m
Thrust pcs Torque	30 N·m	30 N·m	50 N·m	100 N·m	100 N·m

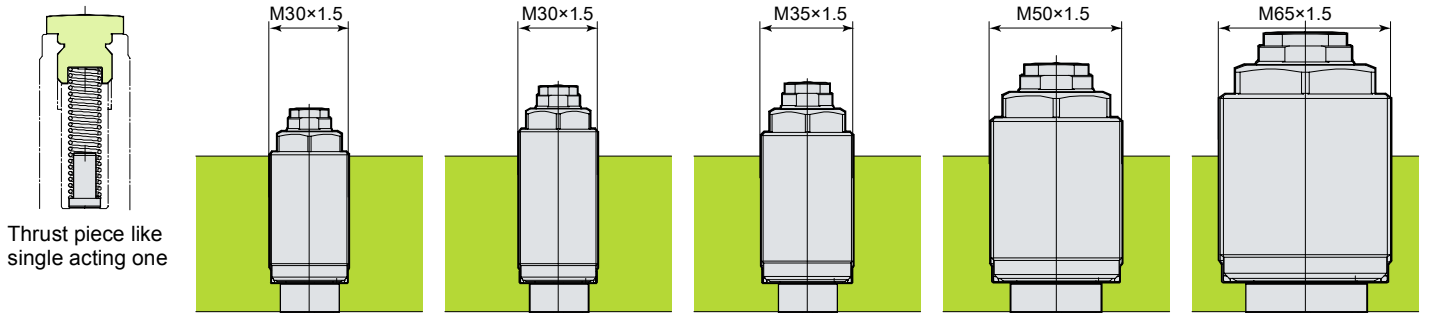
Contact

This offer is provided in cooperation with:

Pascal
GmbH

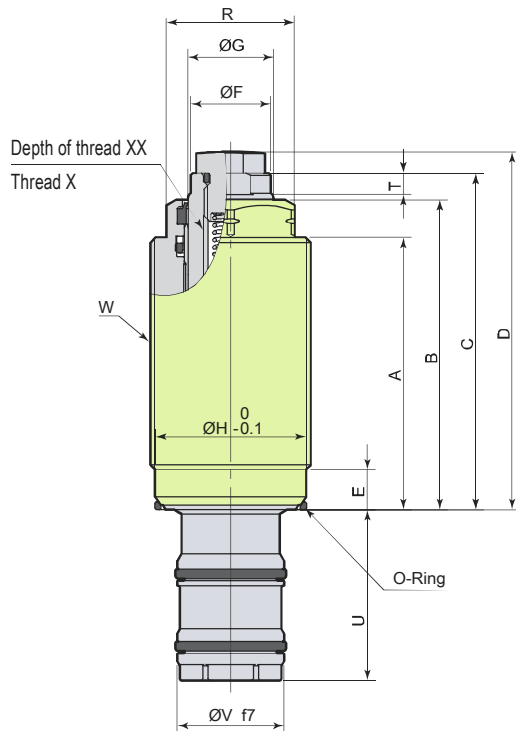
iNOSOL GmbH
Frankfurter Str. 18
35315 Homberg/Ohm (Germany)

web: www.inosol.solutions
email: info@inosol.solutions
tel.: (+49) 6633 / 368 95 25

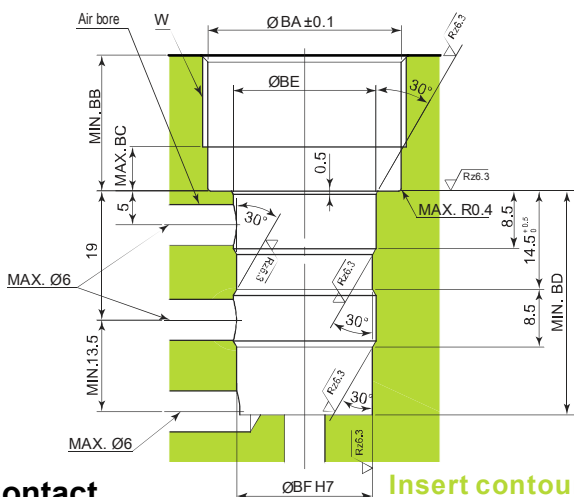


Thrust piece like single acting one

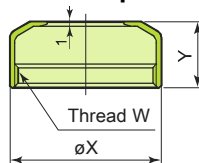
Type	CSW-D06M-L	CSW-D06M-D	CSW-D10M-L	CSW-D16M-L	CSW-D25M-L
Stroke	8 mm	15 mm	10 mm	10 mm	13 mm
feeding force-spring	6-11 N	4-11 N	10-16 N	16-29 N	25-45 N



Type	CSW-D06M-L	CSW-D06M-D	ICSW-D10M-L	ICSW-D16M-L	ICSW-D25M-L
A	51	58	58	59.5	68.5
B	58	65	67	71.8	82
C	63	70	73	78	89
D	67	74	77	84	96
E	7.5	7.5	7.5	7.5	8
F	15	15	19	29	39
G	16	16	20	30	40
H	28.3	28.3	33.2	48.2	63.2
R	24	24	30	41	55
S	13	13	17	24	32
T	4	4	5	5	5.7
U	32	33	34	35	38
V	20 ^{-0.020} _{-0.041}	20 ^{-0.020} _{-0.041}	22 ^{-0.020} _{-0.041}	27 ^{-0.020} _{-0.041}	30 ^{-0.020} _{-0.041}
W	M30×1.5	M30×1.5	M35×1.5	M50×1.5	M65×1.5
X	M10×1.5	M10×1.5	M12×1.75	M16×2	M16×2
XX	13	13	16	20	20
BA	28.5	28.5	33.5	48.5	63.5
BB	15.5	15.5	15.5	15.5	20
BC	6.5	6.5	6.5	6.5	7
BD	33	34	35	36	39
BE	21	21	23	28	31
BF	20 ^{+0.021} ₀	20 ^{+0.021} ₀	22 ^{+0.021} ₀	27 ^{+0.021} ₀	30 ^{+0.021} ₀
Housing, Torque	35 N·m	35 N·m	60 N·m	130 N·m	250 N·m



Metal wiper



Metal wipers	CSP06M-J	CSP10M-J	CSP16M-J	CSP25M-J
Thread	M30×1.5	M35×1.5	M50×1.5	M65×1.5
X	32	37	52	68
Y	14	16	20	21
For support-element	CSW-06M	CSW-10M	CSW-16M	CSW-25M

Contact

This offer is provided in cooperation with:

Pascal
GmbH

inosol GmbH
Frankfurter Str. 18
35315 Homberg/Ohm (Germany)

web: www.inosol.solutions
email: info@inosol.solutions
tel.: (+49) 6633 / 368 95 25