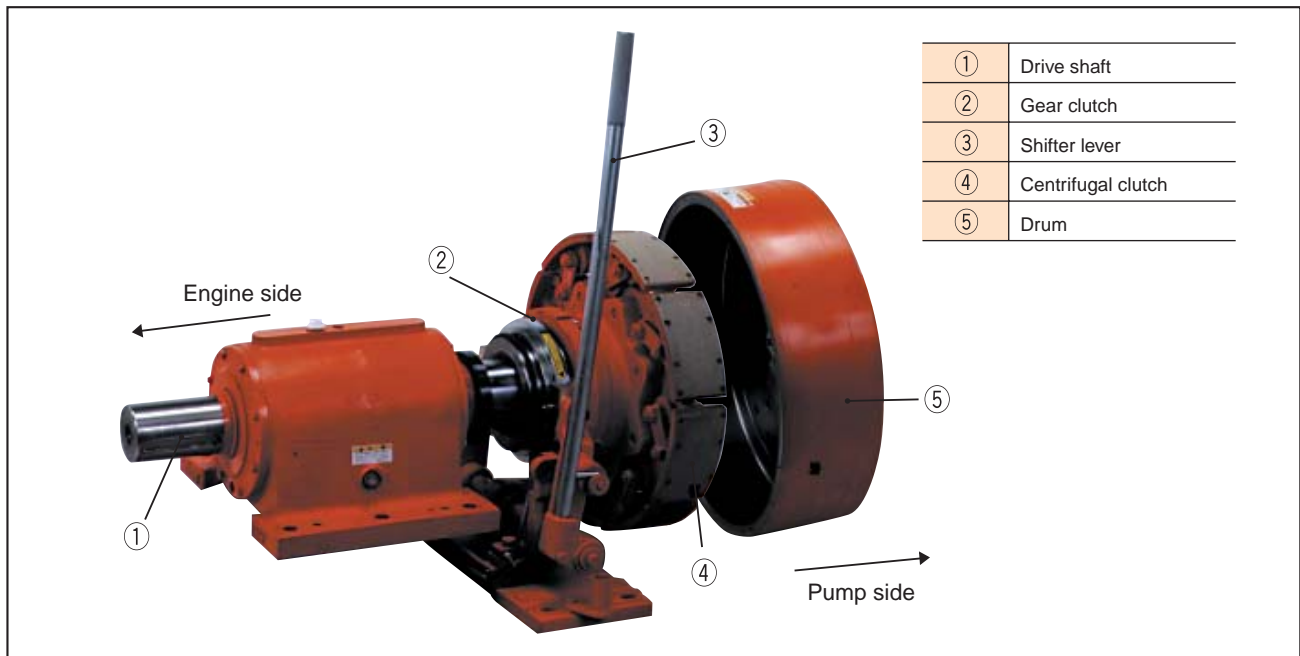





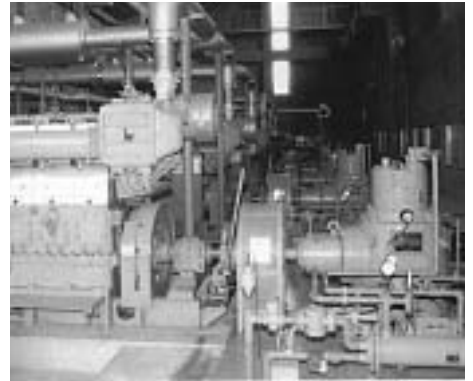
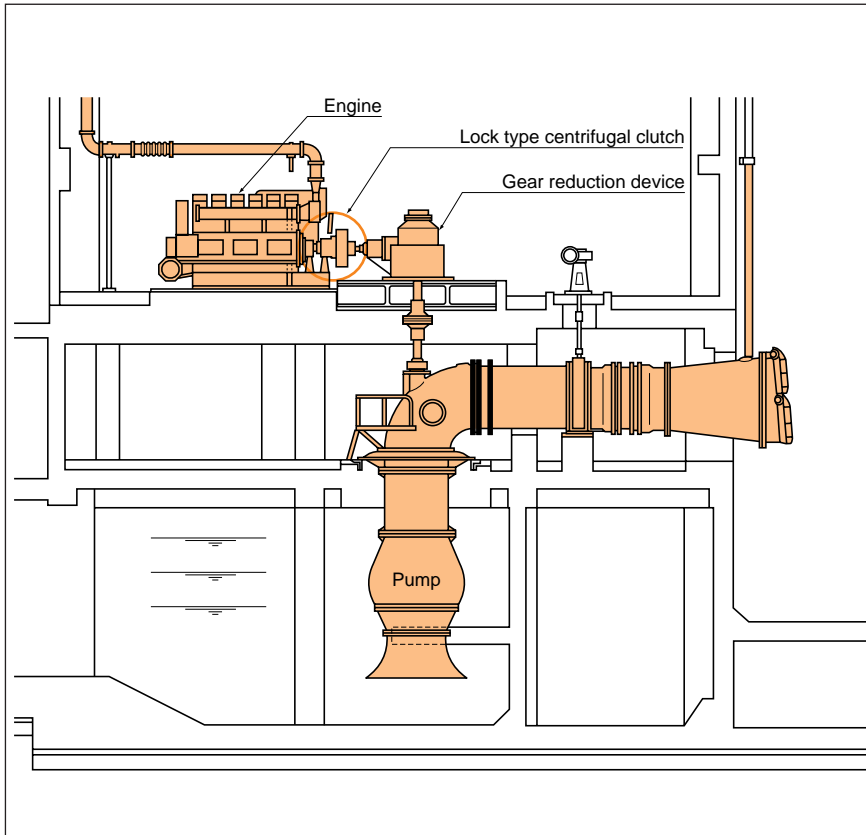
Lock type centrifugal clutch is combined clutch of Twiflex centrifugal clutch with gear clutch installed compactly. It can be applied for engine individual operation, preventing reverse rotation of driving machine, automatic switch-over of motor, cushion start and flexible coupling.



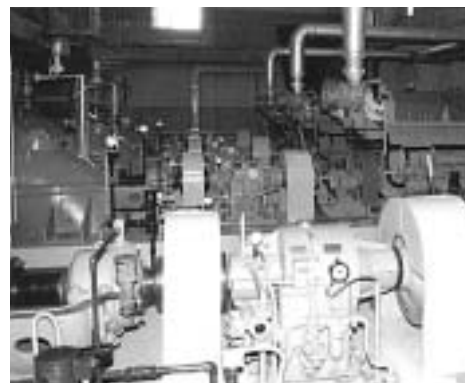
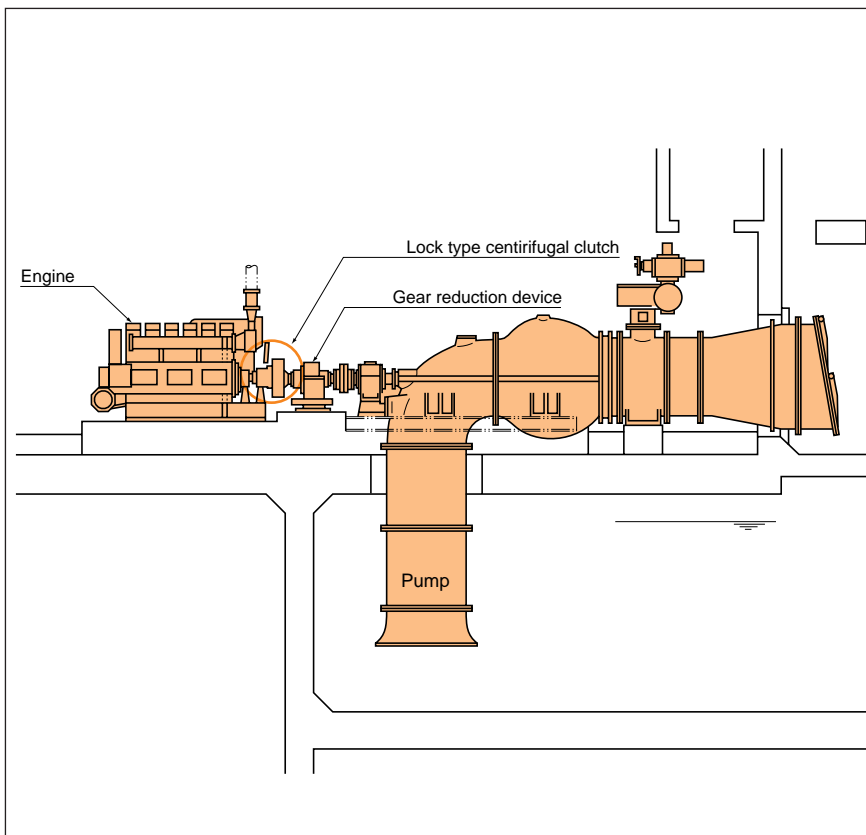
Operation

<p>1</p> 	<p>ON</p> <p>At the stage of gear clutch part is on, as engine rotation speed raises centrifugal clutch transmits load gradually by slipping. At the rated rotation there is no slipping and transmit 100 % power.</p>
<p>2</p> 	<p>OFF</p> <p>At the stage of gear clutch part is off, centrifugal clutch part does not transmit power even though engine is rotating.</p>
<p>3</p> 	<p>ON-OFF Switch over</p> <p>ON-OFF switch over operation can be easily done by sliding shifter lever.</p> <p>*This structure does not allow ON-OFF operation during the operation.</p>

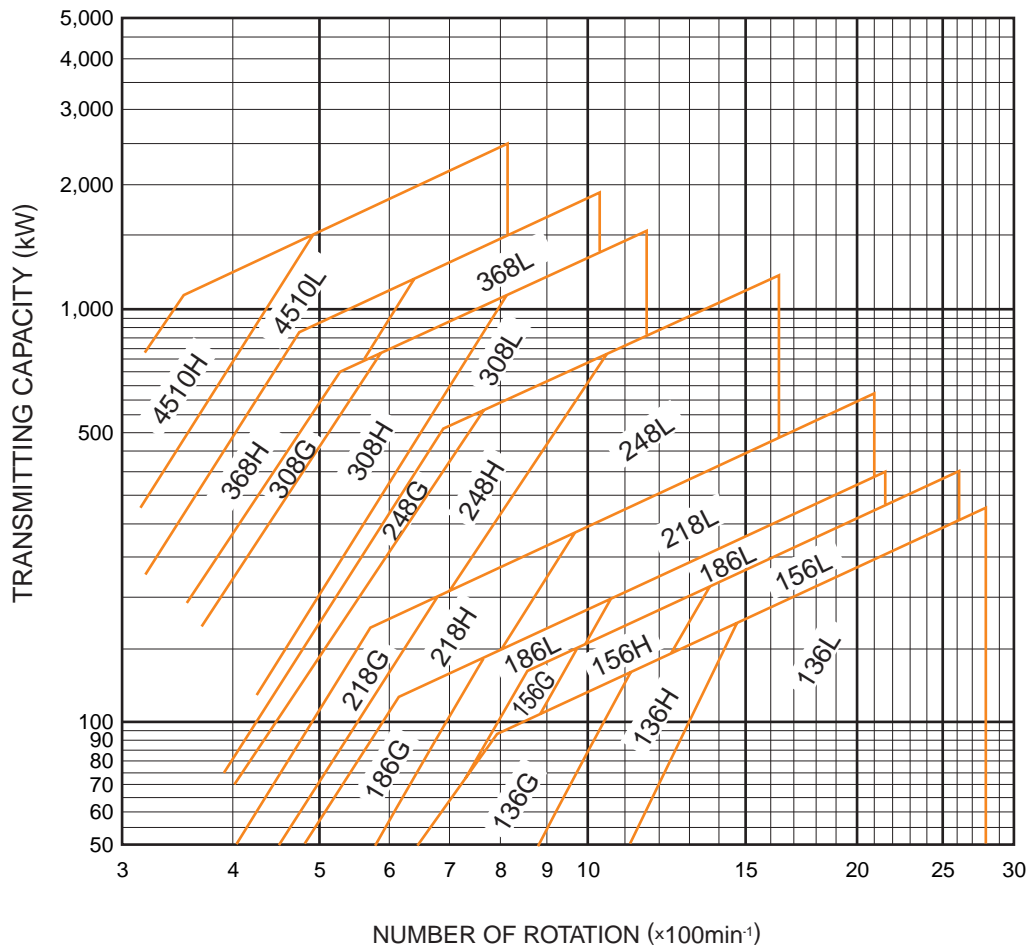
■ Engine and vertical pump



■ Engine and horizontal pump

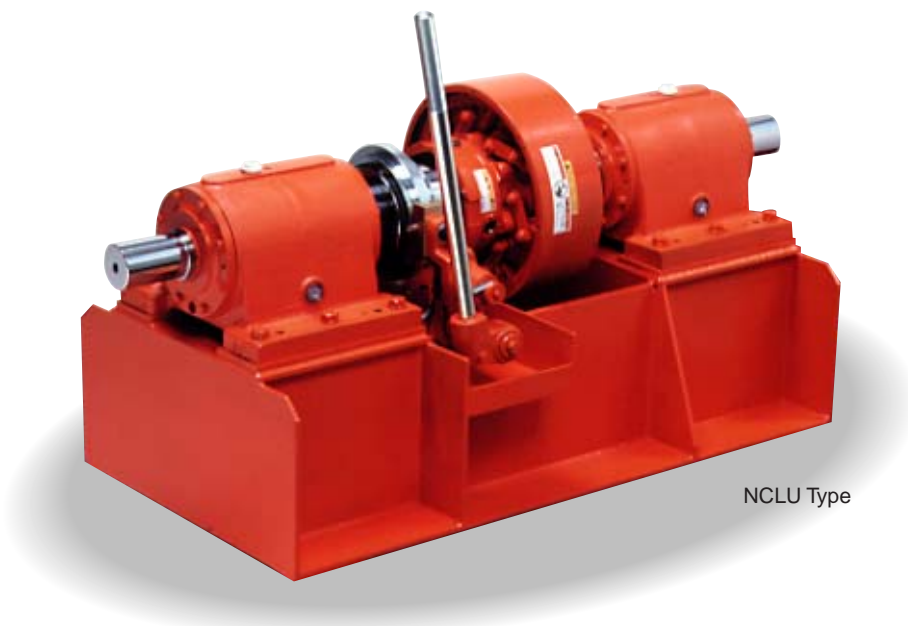


CENTRIFUGAL CLUTCH SIMPLE SELECTION CHART



This selection chart is for heavy load selecting curve (service factor 2). Apply for centrifugal pump, diagonal pump and axial flow pump etc.

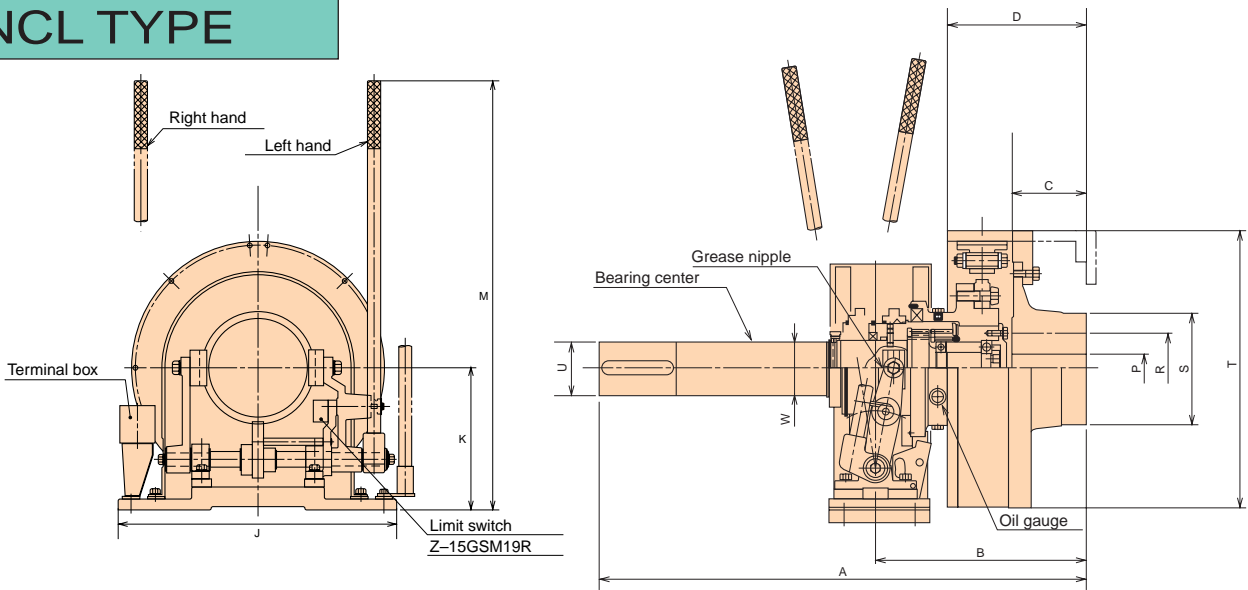
Remark : Consult for followings.
 *Heavy load (screw pump) usage
 Controlling number of rotation



NCLU Type

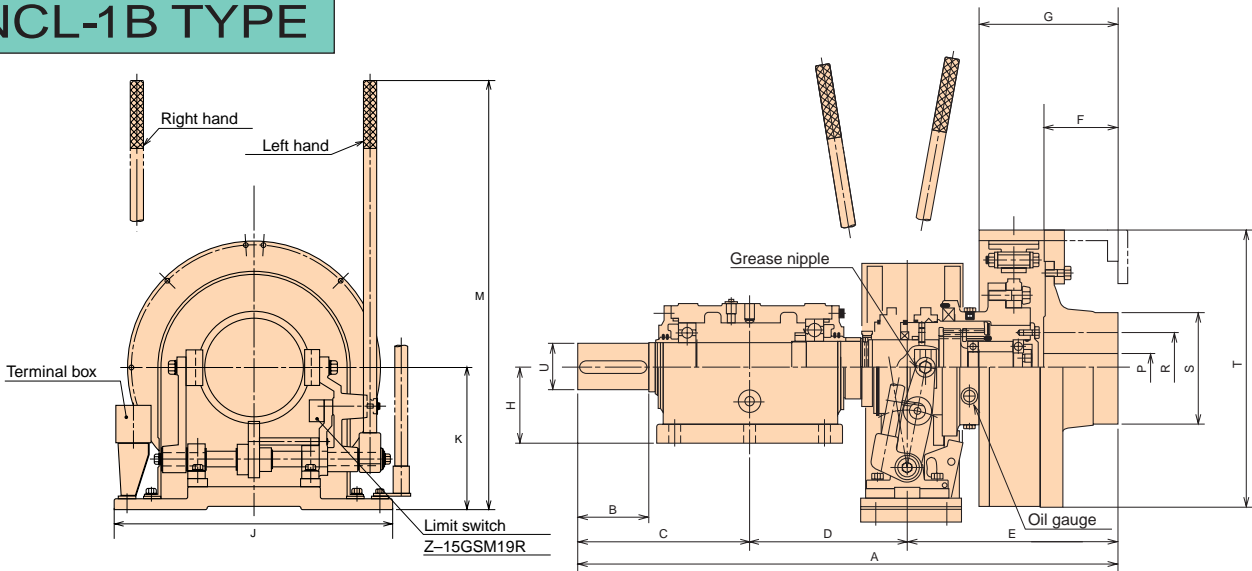
Dimension Drawings

NCL TYPE



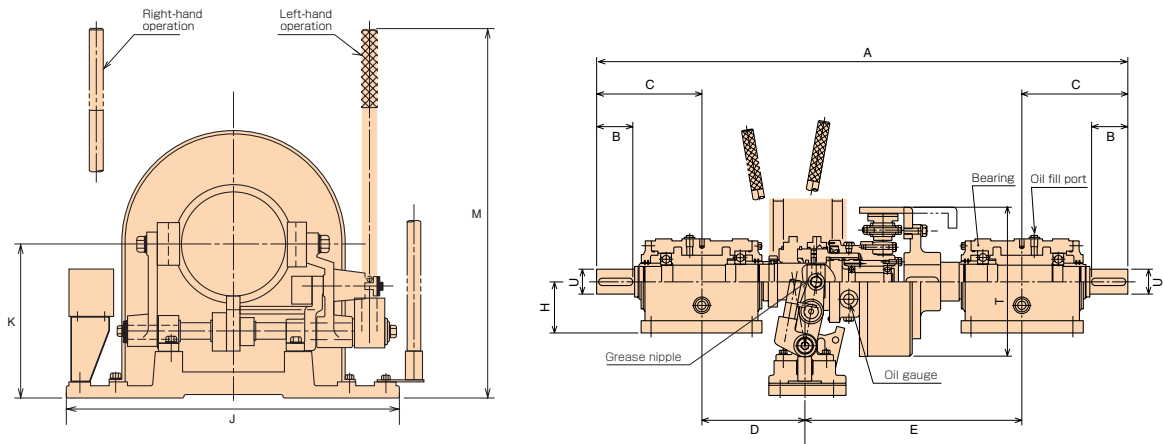
MARK		unit:mm												
MODEL TYPE	A	B	C	D	J	K	M	ϕP	ϕR	ϕS	ϕT	ϕU	ϕW	WEIGHT kg
NCL-136	853	335.5	90	200	600	280	673	30	85	143	367	70	85	145
NCL-156	1,008	421.5	127	243	600	280	673	45	115	178	414	85	95	195
NCL-186	1,215	537.5	152	286	630	320	913	65	150	230	494	95	110	290
NCL-218	1,148	470.5	152	284	630	320	913	65	150	230	576	95	110	350
NCL-248	1,330	522.0	153	331	680	320	965	70	165	254	656	125	150	520
NCL-308	1,432	614.0	203	381	740	370	1,126	75	200	305	817	140	190	890

NCL-1B TYPE



MARK		unit:mm																
MODEL TYPE	A	B	C	D	E	F	G	H	J	K	M	ϕP	ϕR	ϕS	ϕT	ϕU	WEIGHT kg	
NCL1B-136	853	90	260	269.5	335.5	90	200	125	600	280	673	30	85	143	367	70	205	
NCL1B-156	1,008	110	300	286.5	421.5	127	243	140	600	280	673	45	115	178	414	85	255	
NCL1B-186	1,215	145	355	322.5	537.5	152	286	155	630	320	913	65	150	230	494	95	350	
NCL1B-218	1,148	145	355	322.5	470.5	152	284	155	630	320	913	65	150	230	576	95	425	
NCL1B-248	1,330	160	418	390.0	522.0	153	331	190	680	320	965	70	165	254	656	125	600	
NCL1B-308	1,432	170	430	388.0	614.0	203	381	215	740	370	1,126	75	200	305	817	140	970	

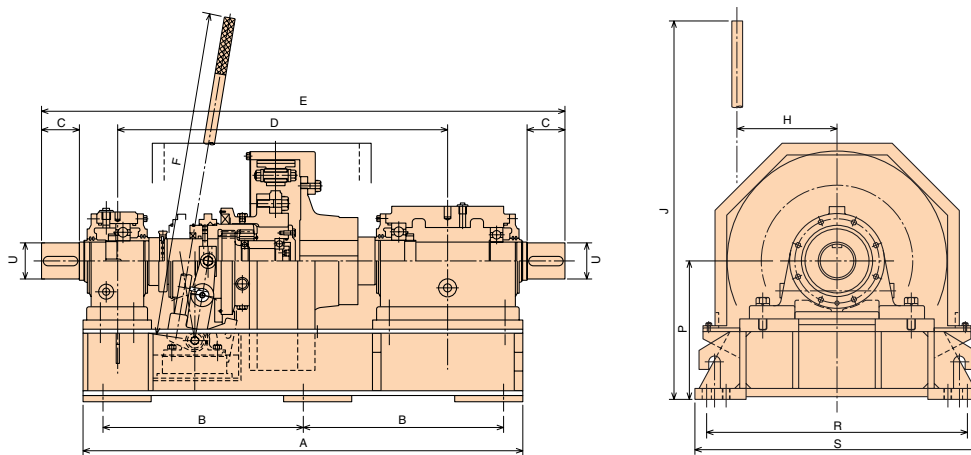
NCL-2B Type



Unit : mm

Model	Symbol	A	B	C	D	E	H	J	K	M	ϕT	ϕU	Weight kg
NCL2B-136		1,303	90	260	269.5	513.5	125	600	280	673	367	70	305
NCL2B-156		1,498	110	300	286.5	611.5	140	600	280	673	414	85	365
NCL2B-186		1,819	145	355	322.5	786.5	155	630	320	913	494	95	470
NCL2B-218		1,752	145	355	322.5	719.5	155	630	320	913	576	95	575
NCL2B-248		2,075	160	418	390.0	849.0	190	680	320	965	656	125	780
NCL2B-308		2,122	170	430	388.0	874.0	215	740	370	1,126	817	140	1,170

NCLU Type



Unit : mm

Model	Symbol	A	B	C	D	E	F	H	J	P	R	S	ϕU	Weight kg
NCLU-136		960	430-2	90	720	1,160	550	215.5	530	300	550	600	70	350
NCLU-156		1,100	485-2	100	815	1,320	550	220.5	580	320	550	600	85	430
NCLU-186		1,200	525-2	100	915	1,420	800	232.0	620	320	600	650	95	800
NCLU-218		1,210	530-2	120	920	1,470	800	232.0	700	350	600	680	95	850
NCLU-248		1,340	390-2	160	1,010	1,680	850	255.5	780	400	680	800	125	1,150
NCLU-308		1,520	450-2	170	1,130	1,880	1,000	283.0	940	480	800	950	140	2,100