

8 Specifications, Various drawings

8-1 Specifications

(50/60Hz)

Type		FA Cooler (Side-mounting Type)				
Model		ENC-GR500S-eco	ENC-GR500L-eco	ENC-GR1000L-eco	ENC-GR1500L-eco	
Performance	Cooling capacity (W) ^{*1}	450	490	980	1480	
	Setting Temperature range (°C)	25 to 45				
	Use area temperature (°C) ^{*2}	20 to 55				
	Use area humidity (%RH)	10 to 85 (No condensation)				
External	External dimensions (H x W x D) (mm)	600 x 300 x 115	450 x 350 x 250	730 x 300 x 260	1000 x 400 x 230	
	Weight (kg)	15	19	26	35	
	Coating color	Munsell 5Y 7/1 Equivalent color of light beige				
Power Source	Rated voltage (V)		Single-phase AC200 to AC240			
	Consumption current (A)	Ventilation	0.6/0.2	0.7/0.2	0.7/0.3	0.7/0.3
		Cooling ^{*1, *2}	Rating : 2.3/2.1 MAX : 2.5/2.3 (at 40°C)	Rating : 2.0/1.8 MAX : 2.5/2.4 (at 46°C)	Rating : 3.0/2.8 MAX : 4.3/4.1 (at 52°C)	Rating : 3.9/3.7 MAX : 6.0/5.7 (at 54°C)
	Power consumption (W)	Ventilation	26	22	38	40
		Cooling ^{*1, *2}	Rating : 330 MAX : 364 (at 40°C)	Rating : 280 MAX : 382 (at 46°C)	Rating : 455 MAX : 678 (at 52°C)	Rating : 625 MAX : 952 (at 54°C)
Protection	Vibration resistance		Equivalent to JIS Z0200 Level1			
	Dust & Water protection grade ^{*3}		Equivalent to IP54 (internal circulation route)			
Regulatory Compliance		Low voltage directive : EN60335-1, EN60335-2-40 / EMC directive : EN61000-6-2, EN61000-6-4, EN62233				
Regulatory authentication		UL, CCC				
HS code		8415.82				
Coolant	Type	HFO-1234yf				
	Volume(g)	150	150	240	600	
Noise (dB (A))		Approx. 69	Approx. 69	Approx. 72	Approx. 72	
External output		Alarm output (Rated voltage normally open : 250 VAC 2A) The change to normal close is possible.				
Display		Panel internal temperature / Error code, RUN				
Environmental response		RoHS				
Remark		Refer to the precautions on each marginal item.				

*1 : Rated capacity value when external temperature is 35°C and humidity is 40%RH , power source & voltage : 200V.
(Measuring specification :JIS B 8615-1 the inside of a air enthalpy test method)

*2 : The temperature range used only defines the range of operation, and does not guarantee rated performance.
Ambient temperature regulations differ for the rated value and the maximum value.

*3 : Excluding drain pipe.

(50/60Hz)

Type	FA Cooler (Side-mounting Type)		(Side-mounting/ Down flow Type)	
Model	ENC-GR2000L-eco	ENC-GR2500L-eco	ENC-GR2500LDF-eco	
Performance	Cooling capacity (W) *1	2000	2500	
	Setting Temperature range (°C)	25 to 45		
	Use area temperature (°C) *2	20 to 55		
	Use area humidity (%RH)	10 to 85 (No condensation)		
External	External dimensions (H x W x D) (mm)	1200 x 450 x 230		
	Weight (kg)	44	45	
	Coating color	Munsell 5Y 7/1 Equivalent color of light beige		
Power Source	Rated voltage (V)	Single-phase AC200 to AC240		
	Consumption current (A)	Ventilation	0.9/0.4	1.0/0.6
		Cooling *1, *2	Rating : 4.5/4.3 MAX : 5.8/5.7 (at 48°C)	Rating : 6.6/6.4 MAX : 6.9/6.6 (at 45°C)
	Power consumption (W)	Ventilation	48	93
		Cooling *1, *2	Rating : 725 MAX : 950 (at 48°C)	Rating : 1090 MAX : 1130 (at 45°C)
Protection	Vibration resistance	Equivalent to JIS Z0200 Level1		
	Dust & Water protection grade *3	Equivalent to IP54 (internal circulation route)		
Regulatory Compliance	Low voltage directive : EN60335-1, EN60335-2-40 / EMC directive : EN61000-6-2, EN61000-6-4, EN62233			
Regulatory authentication	UL, CCC			
HS code	8415.82			
Coolant	Type	HFO-1234yf		
	Volume(g)	700	680	
Noise (dB (A))	Approx. 73	Approx. 76	Approx. 78	
External output	Alarm output (Rated voltage normally open : 250 VAC 2A) The change to normal close is possible.			
Display	Panel internal temperature / Error code, RUN			
Environmental response	RoHS			
Remark	Refer to the precautions on each marginal item.			

*1 : Rated capacity value when external temperature is 35°C and humidity is 40%RH , power source & voltage : 200V.
(Measuring specification :JIS B 8615-1 the inside of a air enthalpy test method)

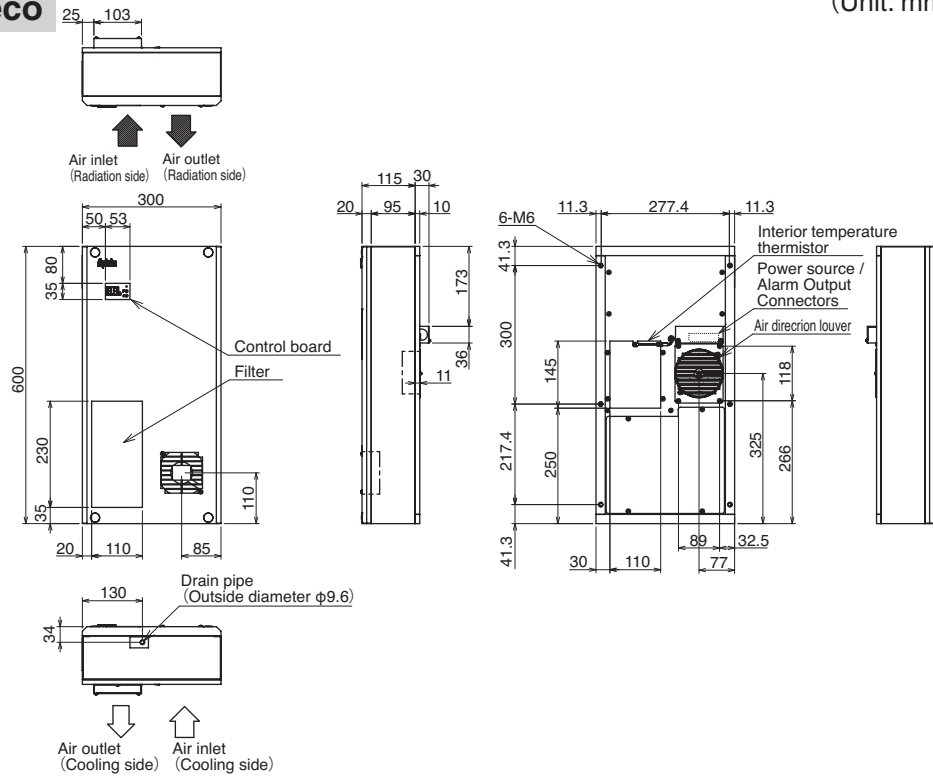
*2 : The temperature range used only defines the range of operation, and does not guarantee rated performance.
Ambient temperature regulations differ for the rated value and the maximum value.

*3 : Excluding drain pipe.

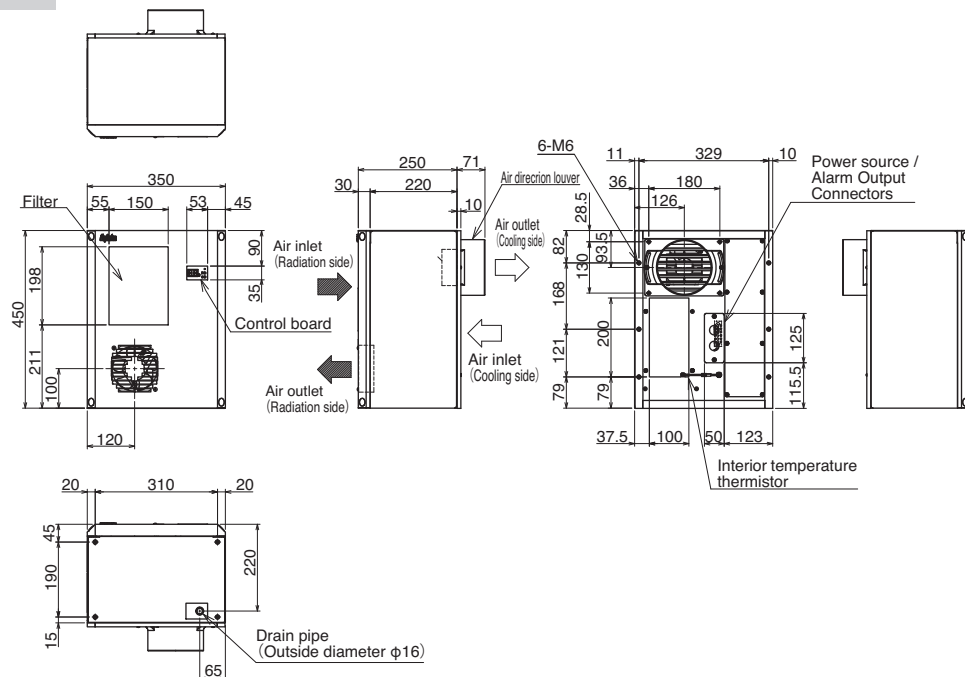
8-2 Outer Dimensions

ENC-GR500S-eco

(Unit: mm)

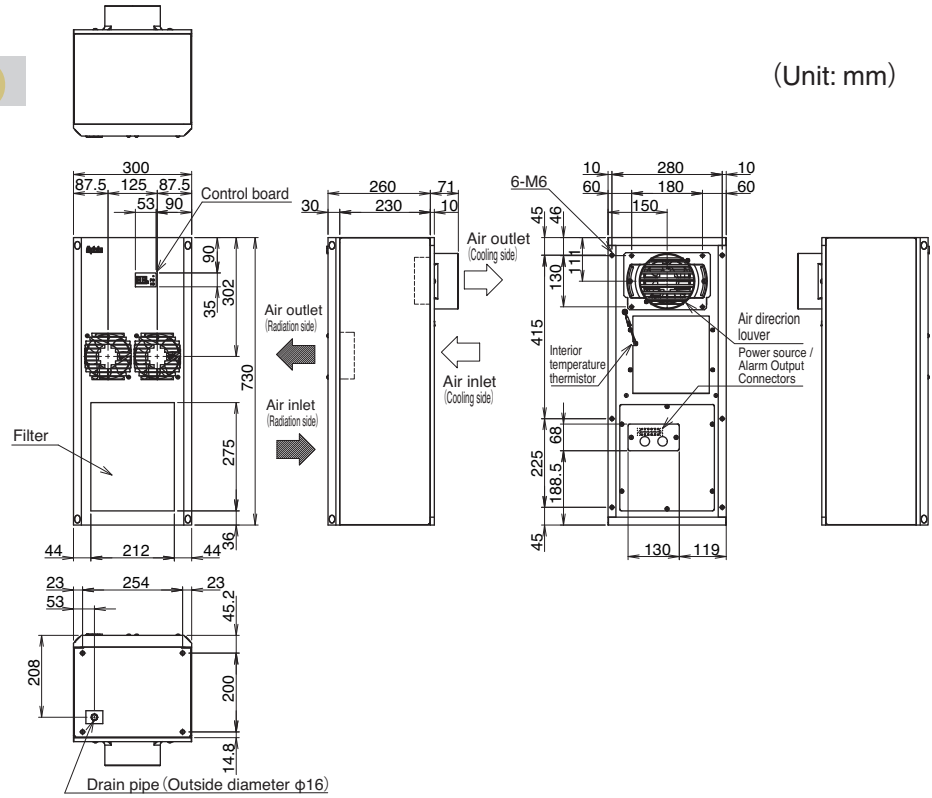


ENC-GR500L-eco

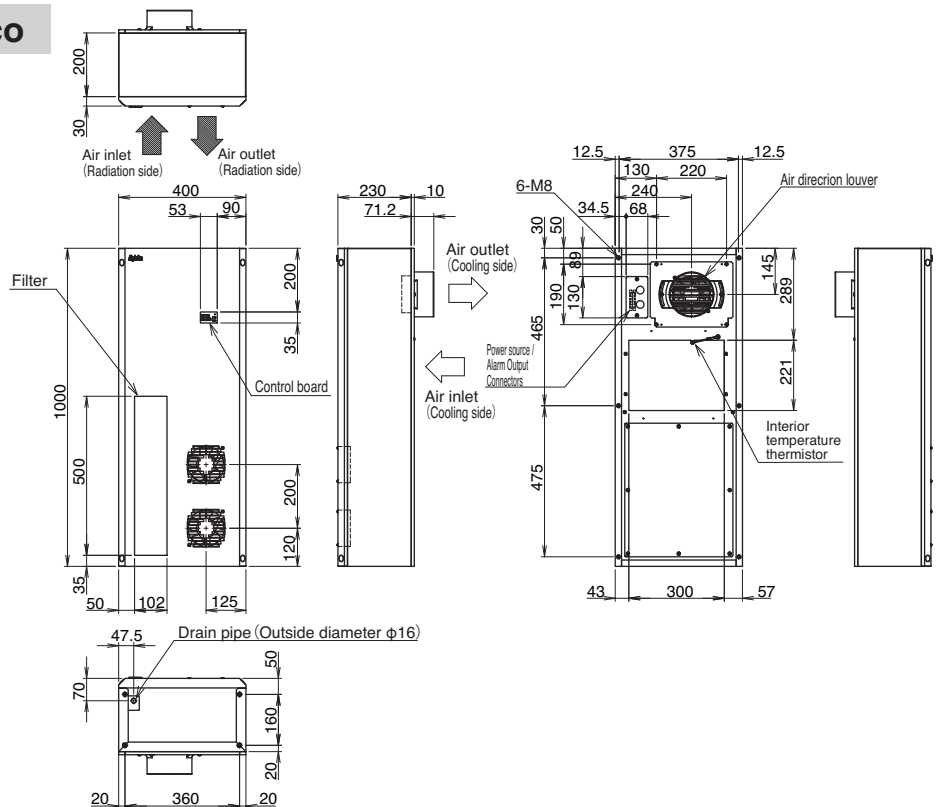


ENC-GR1000L-eco

(Unit: mm)

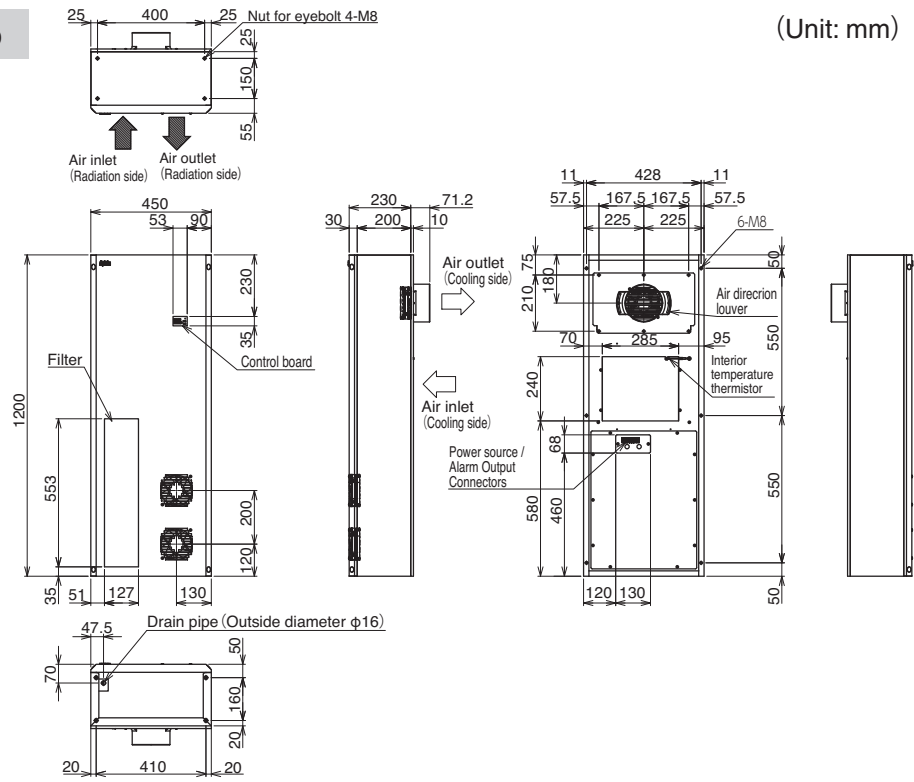


ENC-GR1500L-eco

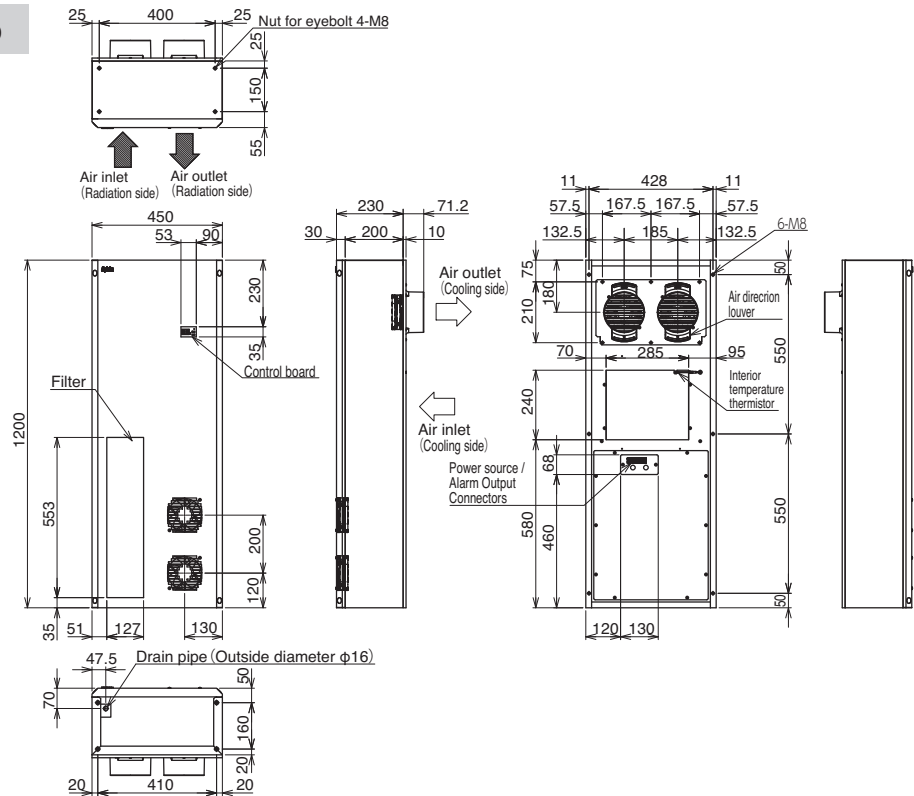


ENC-GR2000L-eco

(Unit: mm)

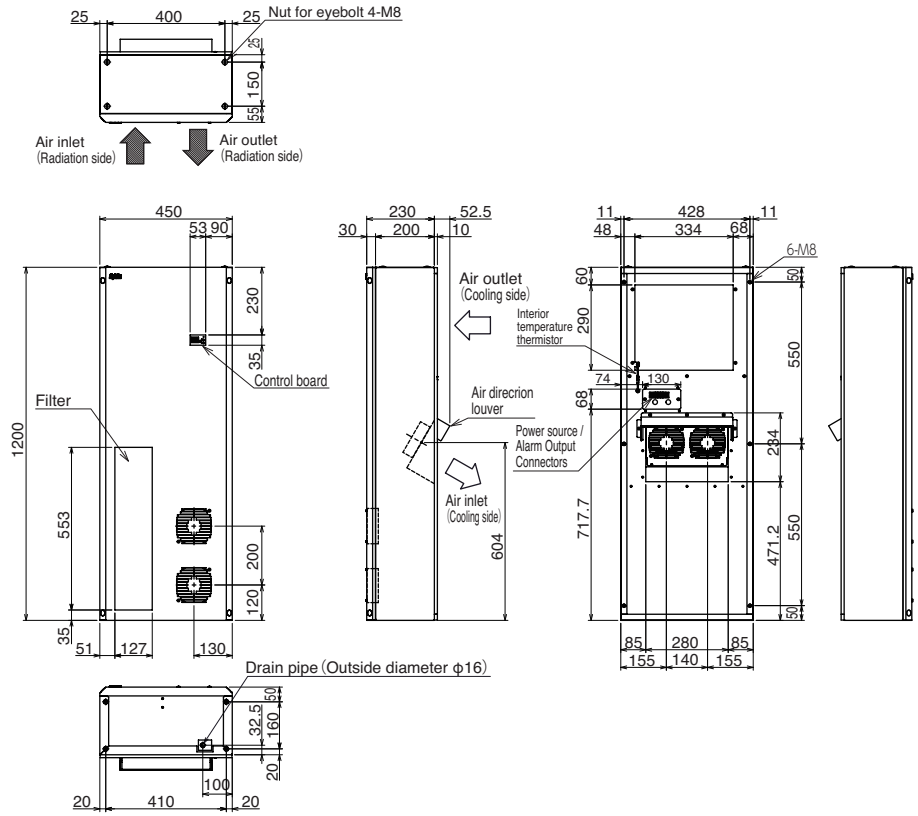


ENC-GR2500L-eco



ENC-GR2500LDF-eco

(Unit: mm)



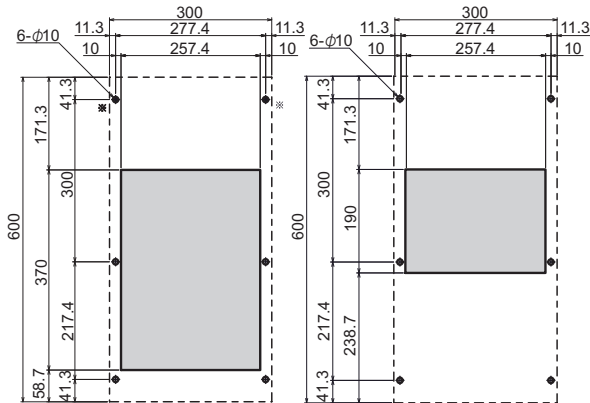
8-3 Diagram of installation work (Panel work)

(Unit: mm)

Note: Perspective plane diagram (Work diagram viewed from the outside mounting surface)

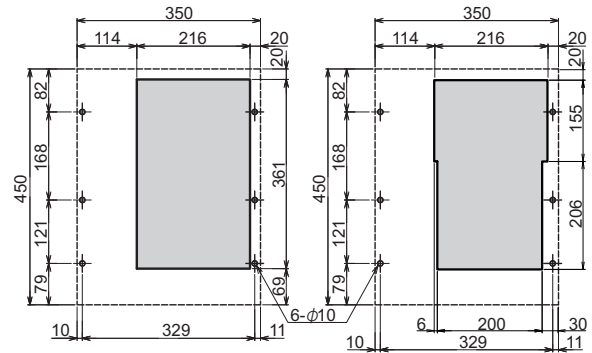
ENC-GR500S-eco

< Standard panel cut > < Smallest panel cutout >



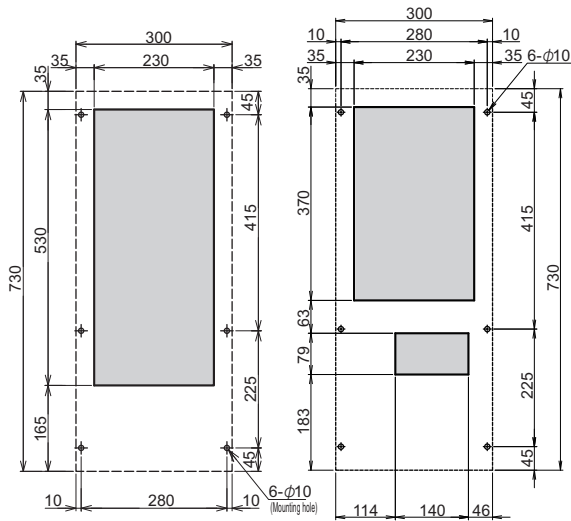
ENC-GR500L-eco

< Standard panel cut > < Smallest panel cutout >



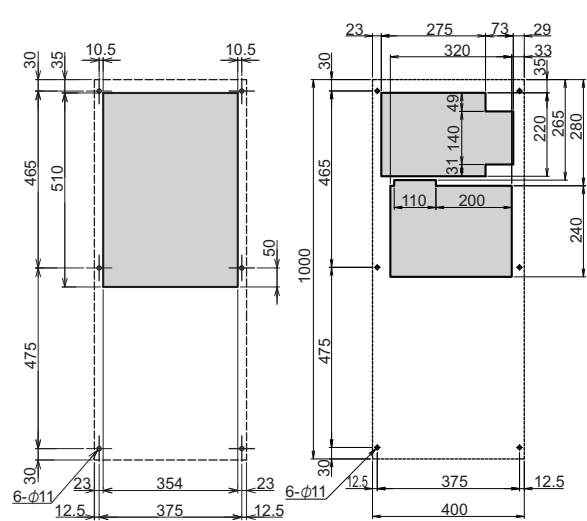
ENC-GR1000L-eco

< Standard panel cut > < Smallest panel cutout >



ENC-GR1500L-eco

< Standard panel cut > < Smallest panel cutout >

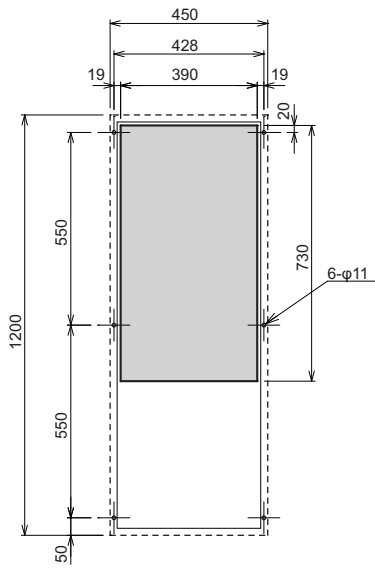


(Unit: mm)

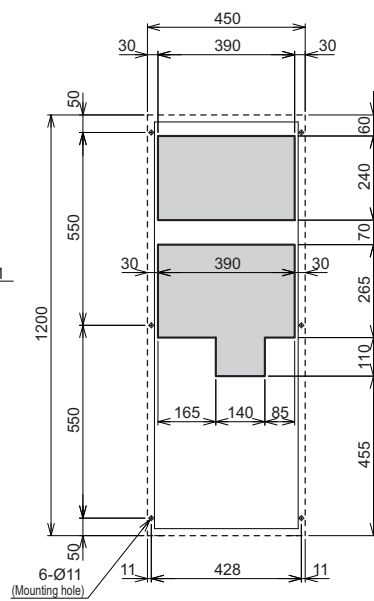
Note: Perspective plane diagram (Work diagram viewed from the outside mounting surface)

ENC-GR2000L-eco / GR2500L-eco

< Standard panel cut >

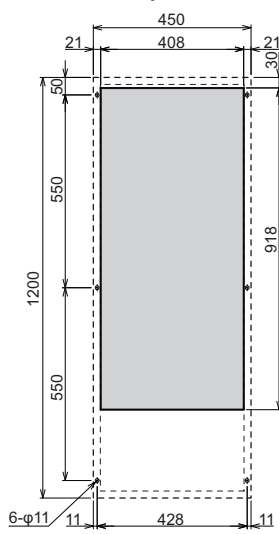


< Smallest panel cutout >

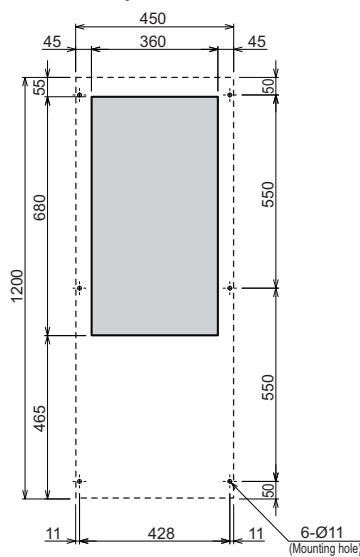


ENC-GR2500LDF-eco

< Standard panel cut >

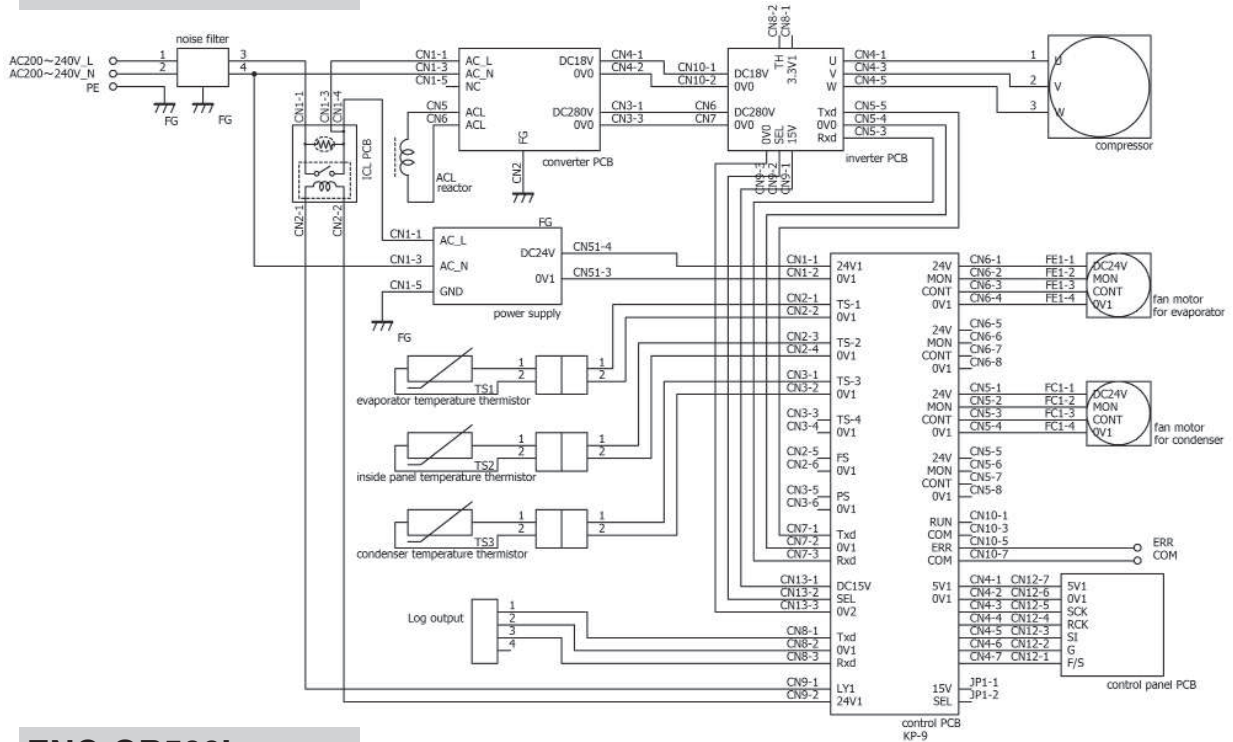


< Smallest panel cutout >

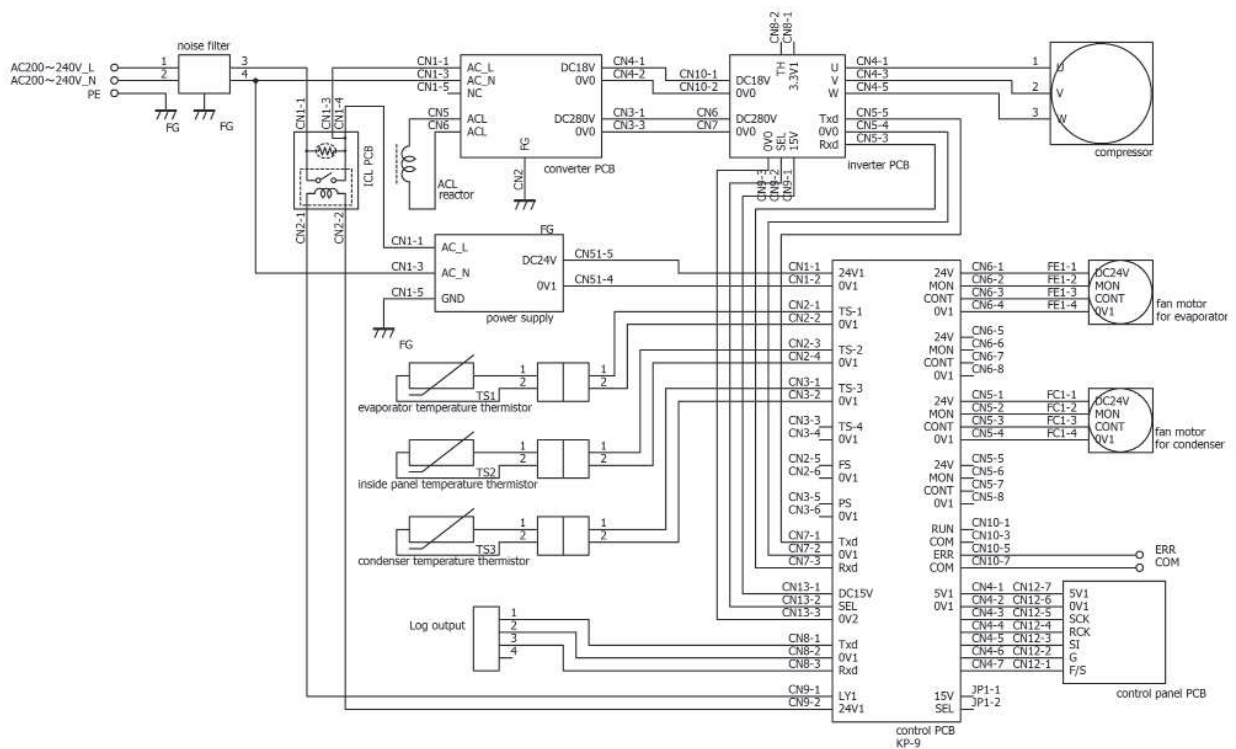


8-4 Principal circuits

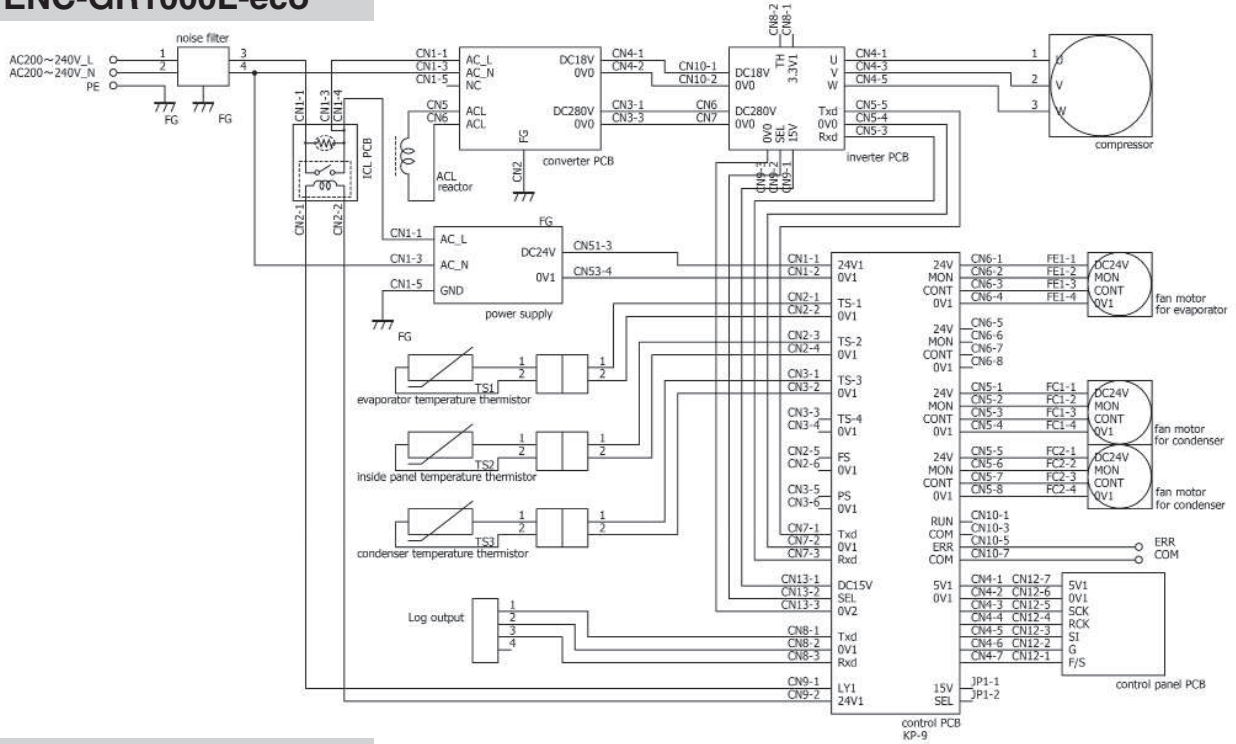
ENC-GR500S-eco



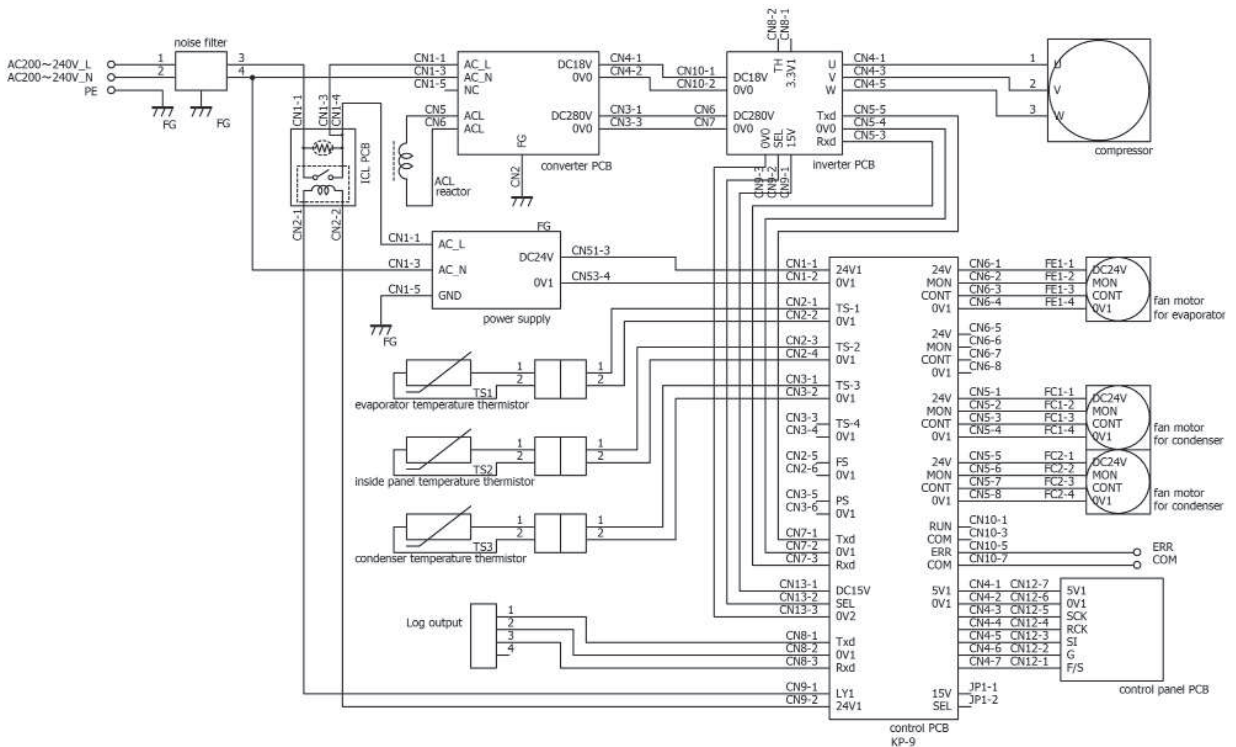
ENC-GR500L-eco



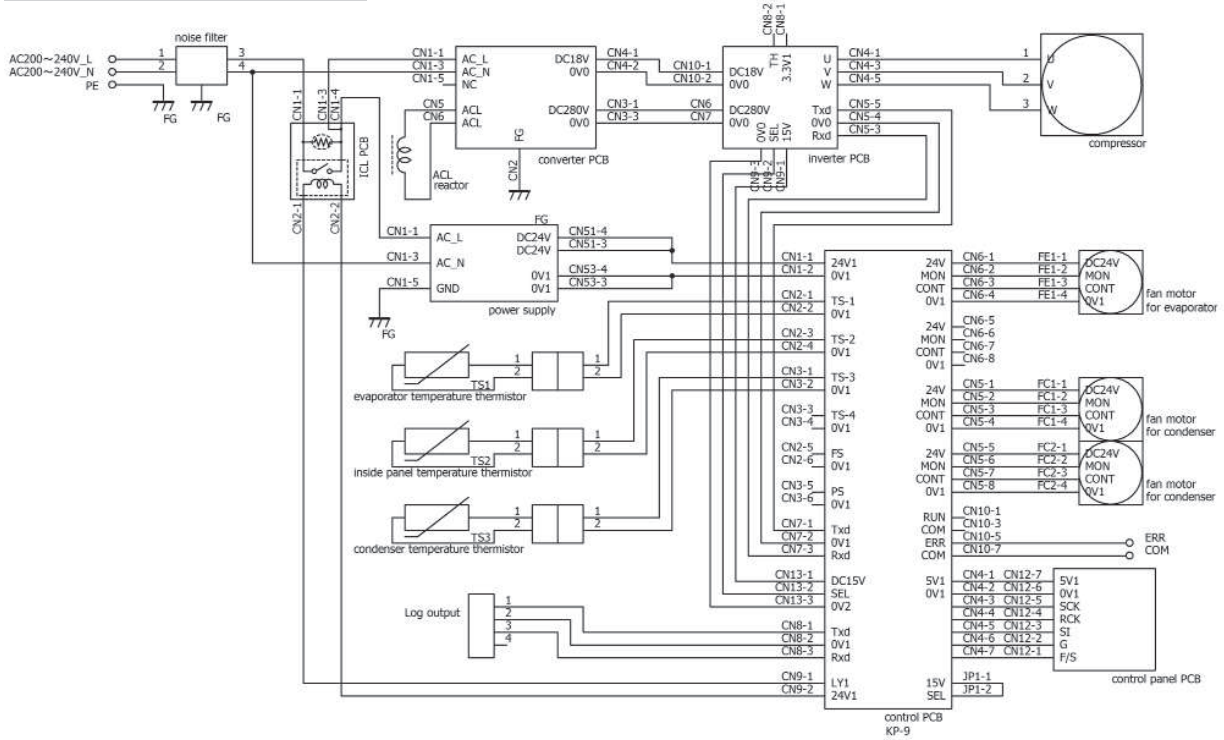
ENC-GR1000L-eco



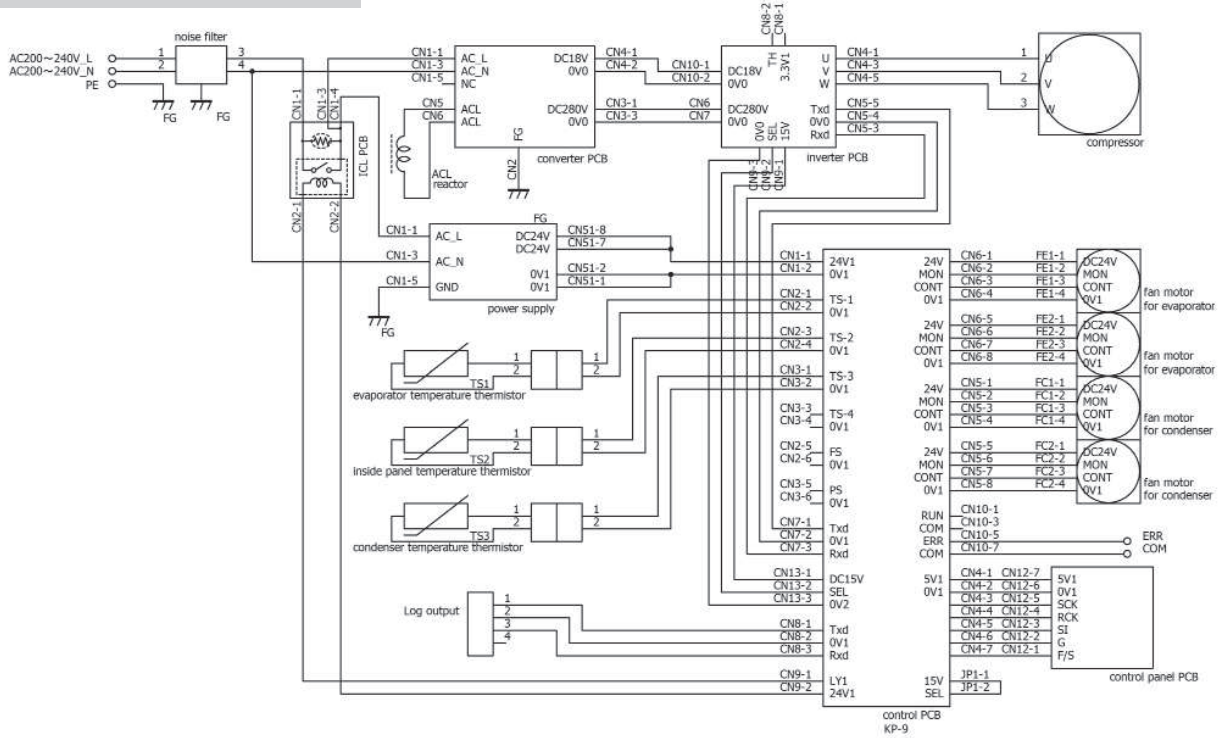
ENC-GR1500L-eco



ENC-GR2000L-eco



ENC-GR2500L-eco



ENC-GR2500LDF-eco

