

Ezi-MOTIONLINK[®]

Network Based Motion Controller Plug-in to Servo Drives

- Ethernet Based Motion Controller
- Plug-in to Various Types of Servo Drive
- Various Motion Functions
- Simplification of the Wirings

Plus-E



FASTECH

Fast, Accurate, Smooth Motion



Fast, Accurate, Smooth Motion

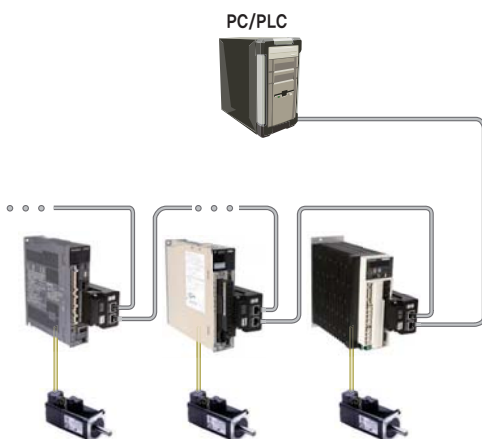
Ezi-MOTIONLINK[®] Plus-E

Network Based Motion Controller Plug-in to Servo Drives



1 Network Based Motion Controller

A maximum of 254 axis can be operated from a PC through Ethernet communications. It can be connected in daisy-chain method by embedded Ethernet HUB. All of the Motion conditions are set through the network and saved in Flash ROM as a parameter. Motion Library(DLL) is provided for programming under Windows XP/7/8/10.



2 Plug-in to Various Servo Drives

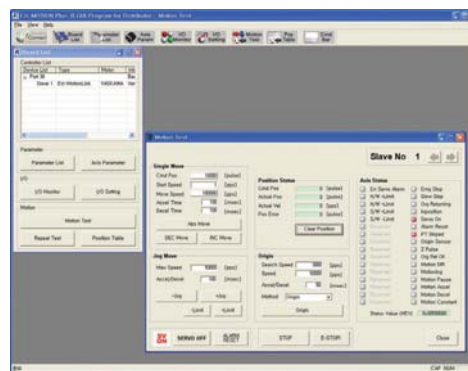
Ezi-MotionLink Plus-E does not need wiring of drives because it is directly connected to User interface connector of Servo Drives. Available Servo Drives are Yaskawa, Mitsubishi, Panasonic, Sanyo Denki, Nidec-Sankyo, LS Mecapion, Higen, RS Automation Servo Drives.

* Ezi-MotionLink Plus-E product which is to support servo drive for LS Mecapion, Higen, RS Automation will be released.



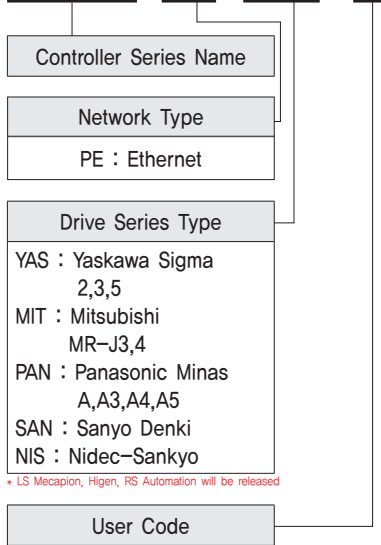
3 Various Motion Function

Symmetrical/asymmetrical trapezoidal acceleration, deceleration and various implementations and that the separate GUI (Graphic User Interface) and the like through a simple motion, Functions, program TEST, parameter settings, I/O settings and conveniently run you can.

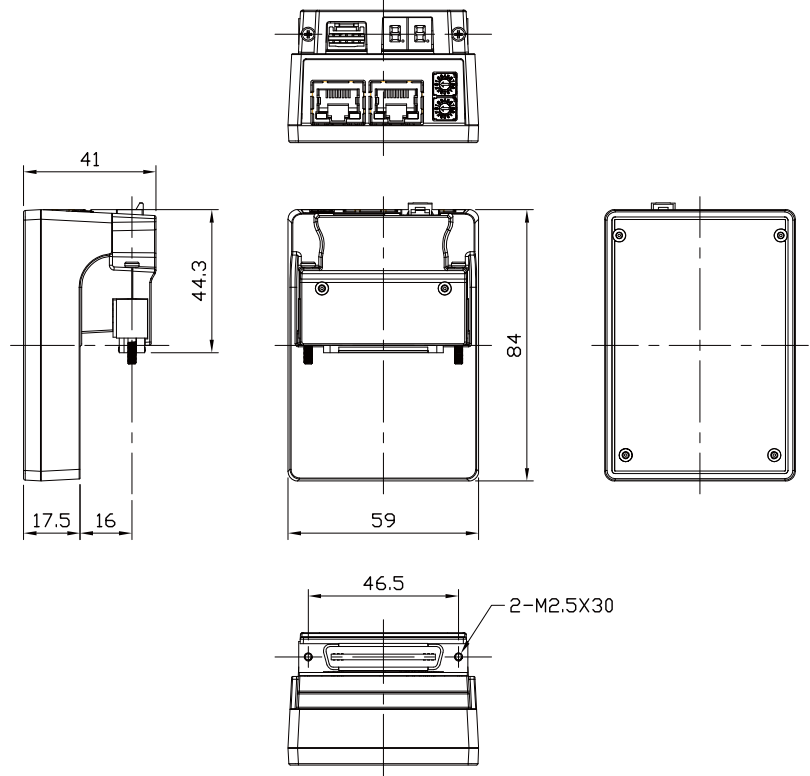


● Part Numbering

Ez-ML-PE-YAS-□



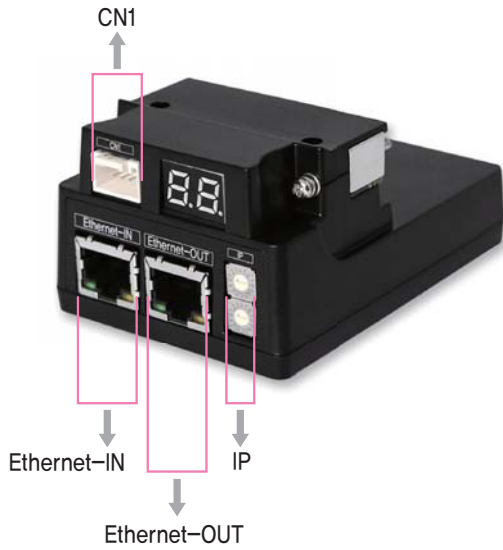
● Dimension (mm)



● Controller Specifications

Input Voltage	24VDC \pm 10%	
Data Range	-134,217,728 ~ +134,217,727 (28bit)	
Type of Acc/Dec	Symmetric / Asymmetric trapezoidal acceleration & deceleration	
Command pulse output method	2 pulse mode (CW/CCW) of 1 pulse mode (Pulse/Dir) (Selected by parameter)	
Max. Output Frequency	5MHz	
Encoder Max. Input Frequency	4MHz	
Input Signal	3 dedicated input (LIMIT+, LIMIT-, ORIGIN), 1 programmable input (photocoupler)	
Output Signal	1 dedicated output (Compare Out), 1 programmable output (photocoupler)	
Rotational Direction	CW / CCW (Selectable by parameter)	
LED Display	IP address, Alarm status	
Communication Interface	Ethernet communication with PC, Dual port Ethernet switch embedded, Communication speed : 10/100bps - T/TX Full Duplex	
Multi Axes Drive	Maximum 254 axis operating (Selectable IP : 1~255)	
Return to Origin	Origin Sensor, Z phase, \pm Limit Sensor	
GUI	User Interface Program within Windows	
Library	Motion Library (DLL) for windows XP/7/8/10	
Operating Condition	Ambient	In Use : 0~55°C In Storage : -20~70°C
	Humidity	In Use : 35~85% (Non-condensing) In Storage : 10~90% (Non-condensing)
	Vib. Resist.	0,5G

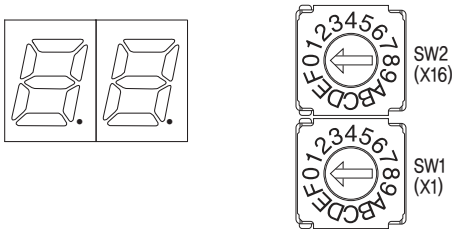
● Setting and Operation



1. Ethernet IP Display and Select Switch

It is to be set from 2 to 255. Please set the IP not to overlap each other. (Basic set up is "192.168.xxx and xxx is to be set by switch)

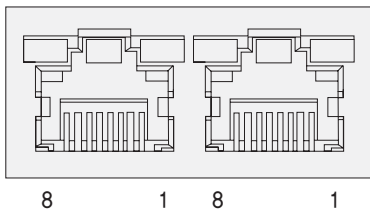
If set the switch to 255, IP is set automatically. (DHCP)



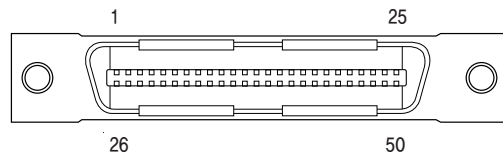
Ex) In case of SW1 : 7, and SW2:5
 $5 \times 16 + 7 \times 1 = 87$
 IP is to be set as 192.168.0.87

2. Ethernet Communication Connector(CN2, CN3)

NO.	Function	NO.	Function
1	TD+	6	RD-
2	TD-	7	----
3	RD+	8	----
4	----	Connector hood	FG
5	----		



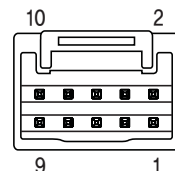
3. Servo Drive Connector(CN4)



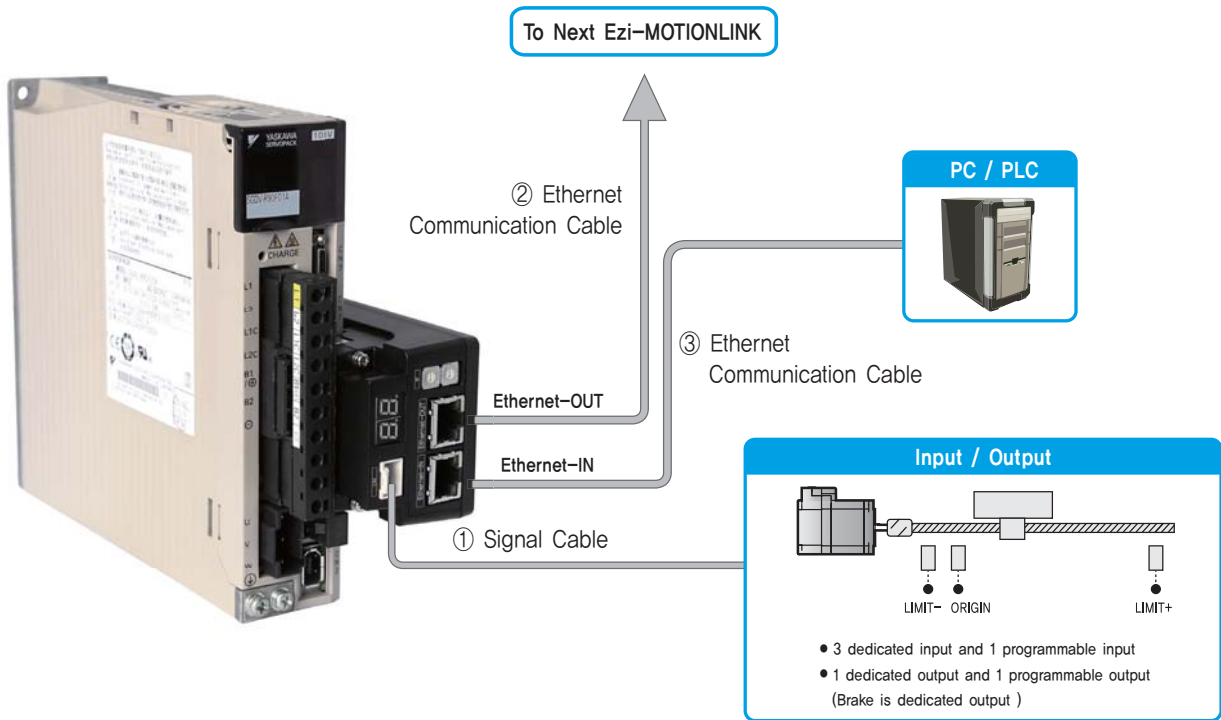
Pin Map of connector(CN4) which connects to Servo Drives is various according to type of Servo Drives. Please check Manual in detail. (It is plug-in to Servo Drives which are using normally so users do not have to concern.

4. Input/Output Signal(CN1)

NO.	Function	I/O
1	+24V	Input
2	24V GND	Input
3	+24V	Output
4	24V GND	Output
5	+LIMIT	Output
6	-LIMIT	Output
7	ORIGIN	Output
8	IN1	Input
9	BRAKE	Output
10	OUT1	Output



System Configuration



FASTECH Ezi-MOTIONLINK Plus-E

1. Cable Option

① Signal Cable

I/O connection cable for Ezi-MotionLink Plus-E, Origin Sensor and etc.

Item	Length[m]	Remark
CSPE-S-□□□F	□□□	Normal Cable

□ is for Cable Length, The unit is 1m and Max, 20m length.

② Ethernet Cable

Shielded twisted pair(STP) cable of category 5 or higher..

Item	Length[m]	Remark
CGNR-EC-□□□F	□□□	Normal Cable

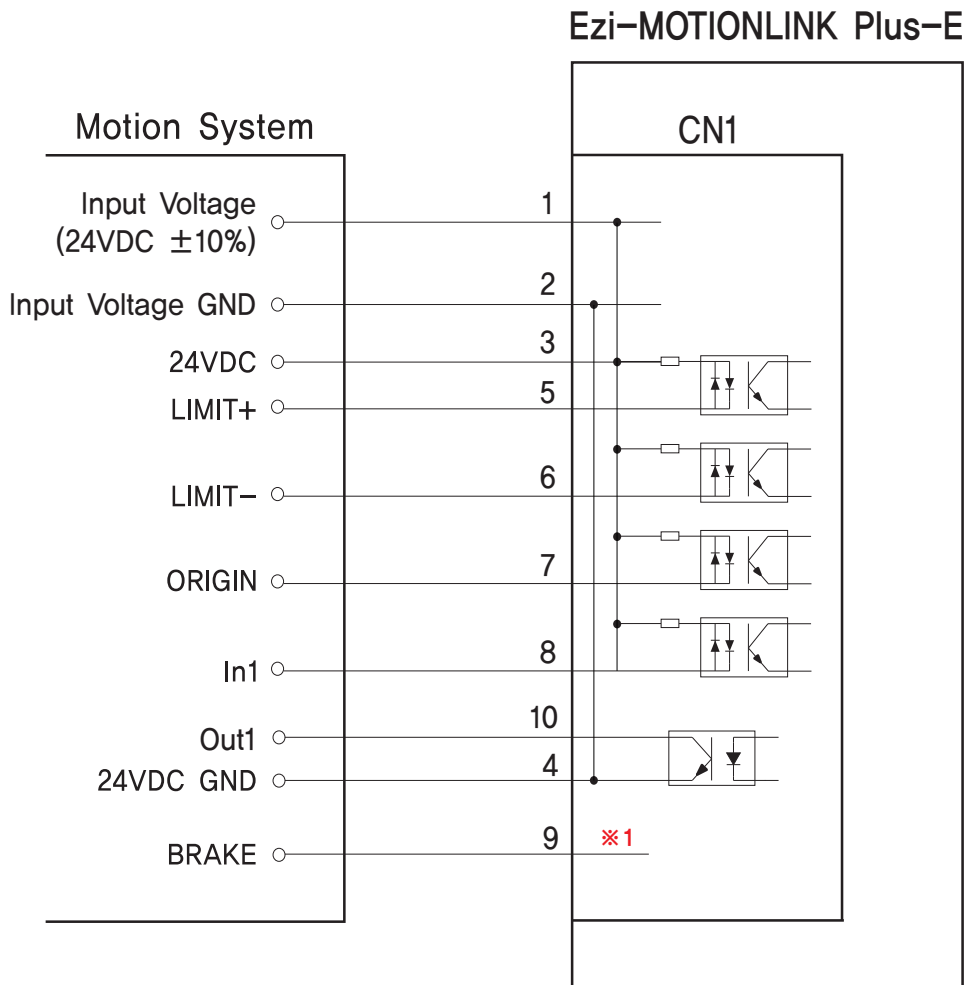
□ is for Cable Length, The unit is 1m and Max, 100m length.

2. Connector for Cabling

ITEM		Specification	Marker
Power/Signal Connector (CN1)	Housing	501646-1000	MOLEX
	Terminal	501648-1000 (AWG 26~28)	MOLEX

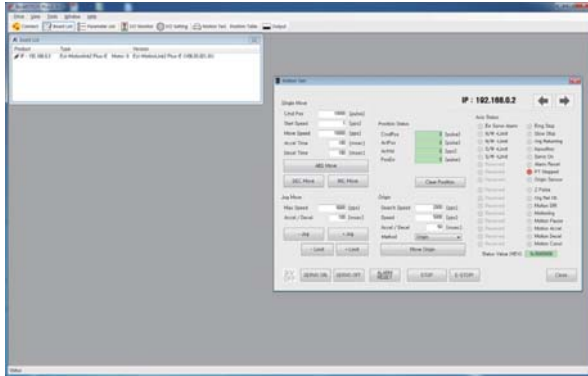
※Above connector is the most suitable product for Ezi-MotionLink Plus-R. Another equivalent connector can be used.

● External Wiring Diagram



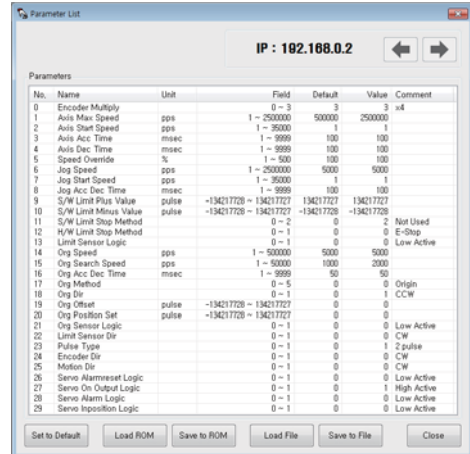
※1 brake terminals of the brake servo drives is an extension of the signal as it is, Therefore Connecting to and using the brake servo is in use See the description of the drive.

● GUI(Graphic User Interface) Screenshot



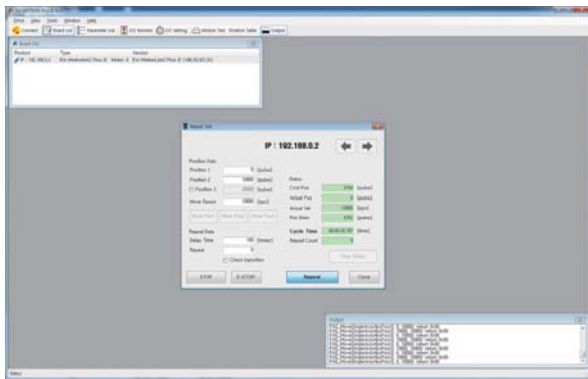
◆ Controller Lists and Motion Test

This screen displays the controller list that is connected to the system. You can make a single move, jog, and origin command, and the motor status is also displayed.



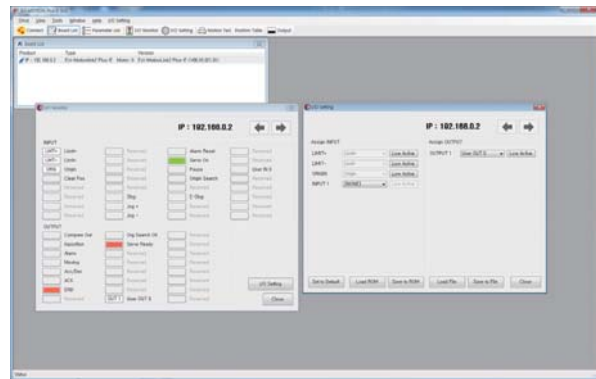
◆ Parameter List

All of the parameters are displayed and modified on this screen.



◆ Motion Repeat and Monitor Status

Target position, speed, delay time, and repeat count are selected for the repeat motion test. The motion library (DLL) is also displayed on the screen.



◆ I/O Monitoring and Setting

You can select various digital input and output signals of the controller.

MEMO



MEMO

MEMO



Fast, Accurate, Smooth Motion

FASTECH Co., Ltd.

Rm#1202, 401-dong, Bucheon Techno-Park,
655, Pyeongcheon-ro, Bucheon-si Gyeonggi-do,
Republic of Korea (Zip:14502)
TEL : +82-32-234-6300 FAX : +82-32-234-6302
E-mail : fastech@fastech.co.kr
Homepage : www.fastech.co.kr