

# Data Sheet for Joysticks

Finger Joystick

Series 829



- 1 Axis, Spring Return or Friction Clutch
- Optional with Hall sensors or Potentiometer
- Resting position of handle in center position, at negative max. deflection or at any angle using a friction clutch

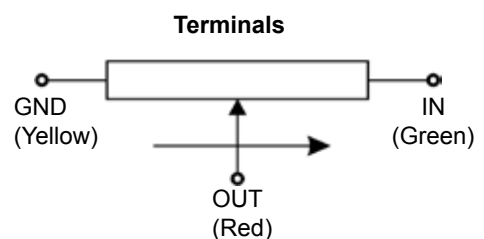
For the 829 series, several options are available: Rubber boot, handles, resistance value of potentiometers, additional switches.

## Technical Data Joystick

Angle of Movement	$\pm 20^\circ$ from center
Operating Force	1.. 2,5 N (1 .. 5,5 N with Rubber Boot)
Return to Center Accuracy	$\pm 1^\circ$
Operating Temperature	$-20^\circ\text{C} \dots +60^\circ\text{C}$
Vibration (MIL-STD-202F-204)	10..55 Hz 98 m/s <sup>2</sup>
Shock (MIL-STD-202F-213)	294 m/s <sup>2</sup>
Lifetime	typ. 2 million cycles
Weight	ca. 100 g
Protection Grade	IP40

## Technical Data Potentiometer Type K

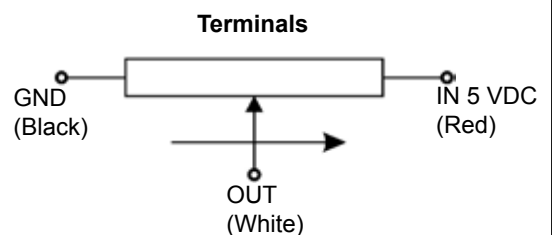
Technology	Conductive Plastic; Bearing
Nominal Total Resistance	10 k Ohm
Resistance tolerance	$\pm 20\%$
Independent Linearity	$\pm 5\%$ full-scale
Power Rating @ 40°C	0,1 W
Effective Electrical Angle of Rotation	$40^\circ$
Lifetime	typ. 2 million cycles
max. Wipe Current	1 mA



Wire AWG20, Length ca. 300 mm

## Technical Data Hall Sensor Type H

Technology	Hall sensor
Supply Voltage	5 VDC $\pm 10\%$
Power Consumption	ca. 6 mA
Output Voltage	0,5 V.. 4,5 V
Independent Linearity	$\pm 3\%$ full-scale
Load Resistance	> 100k Ohm
Temperature Drift Output	< $\pm 2,5\%$ Uout full-scale
Temperature Drift Center Position	< 0,5% Uout full-scale
Insulation Resistance	> 100 MOhm @ 250 VAC
Lifetime	typ. 5 million cycles



Wire AWG20, Length ca. 300 mm

# Data Sheet for Joysticks

Finger Joystick

Series 829

## Order Code

<b>Series</b>	829								
<b>Axes</b>									
<b>1 Axis</b>		1							
<b>Rubber Boot</b>			5						
<b>Square Dress Panel</b>			8						
<b>Spring Return</b>				1					
<b>Friction Clutch</b>				6					
<b>Handles</b>									
<b>Cylinder</b>					2				
<b>Ball Tip</b>					3				
<b>Flat</b>					F				
Cylinder, with Pushbutton (*)					6 (*)				
<b>Mounting Plate</b>									
<b>none</b>						1			
Mounting Plate (*)						4 (*)			
<b>Sensors</b>									
<b>Potentiometer Type K</b>							K		
<b>Hall Sensor Type H</b>							H		
<b>Micro Switches</b>									
<b>none</b>								0	
Center Detect Switch (*)								1 (*)	
2 Micro Switches, ON @ ±5° (*)								2 (*)	
<b>Additional Options</b>									
Resistance Values Potentiometer (1k, 5k) (*)									RxK (*)
Center Tap (Potentiometer) (*)									CT (*)

Bold print = Standard options

(\*) upon request

### For higher quantities or on-going demand, additional options are available

For example:

- Specific switch configurations
- Customer-specific cable

For technical advice, projects, samples, questions about pricing, delivery times and availability please contact us

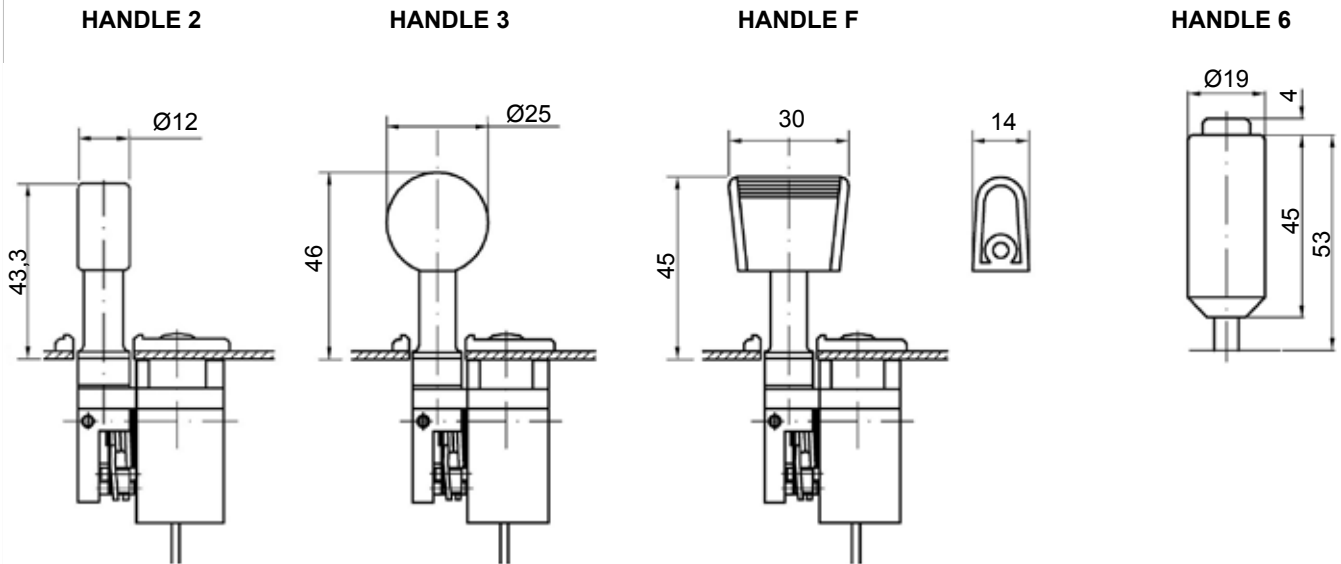
Tel.: +49 89 46094-500  
 export@megatron.de

# Data Sheet for Joysticks

Finger Joystick

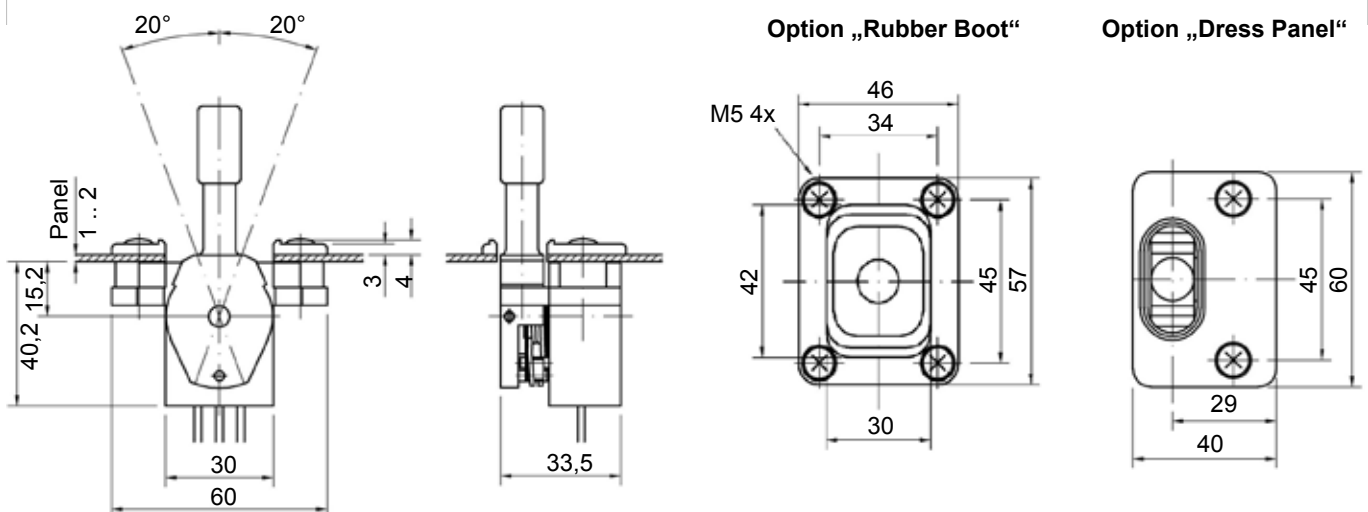
Series 829

## Handle Versions



Dimensions in mm

## Technical Drawing

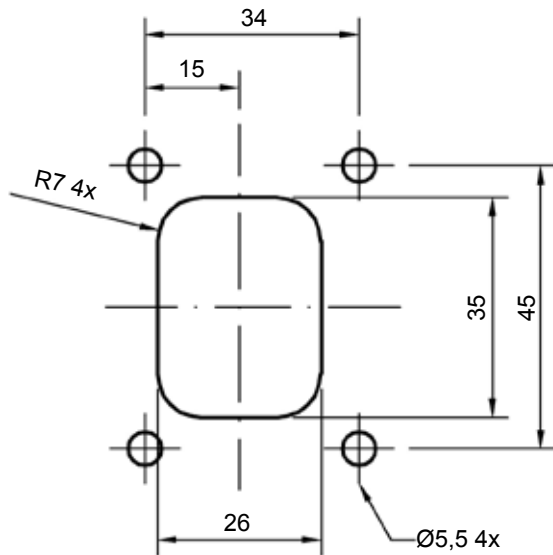


Dimensions in mm

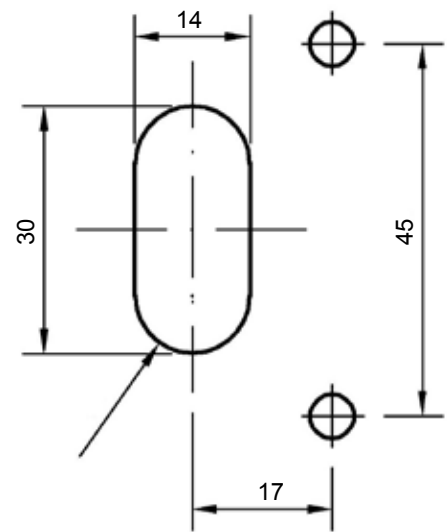
## Mounting Options

### PANEL CUT-OUT

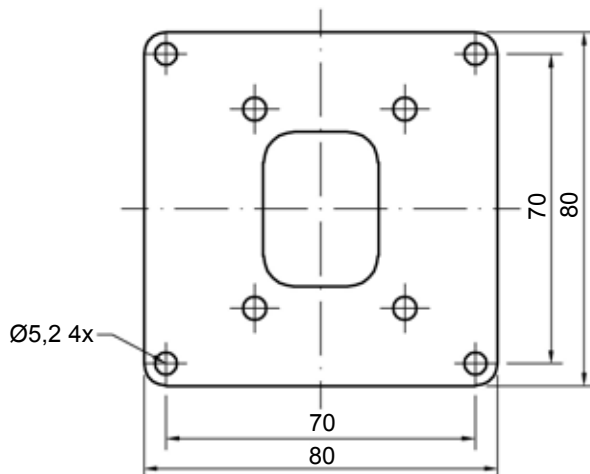
Option „Rubber Boot“



Option „Dress Panel“



Option „Mounting Plate“



Dimensions in mm