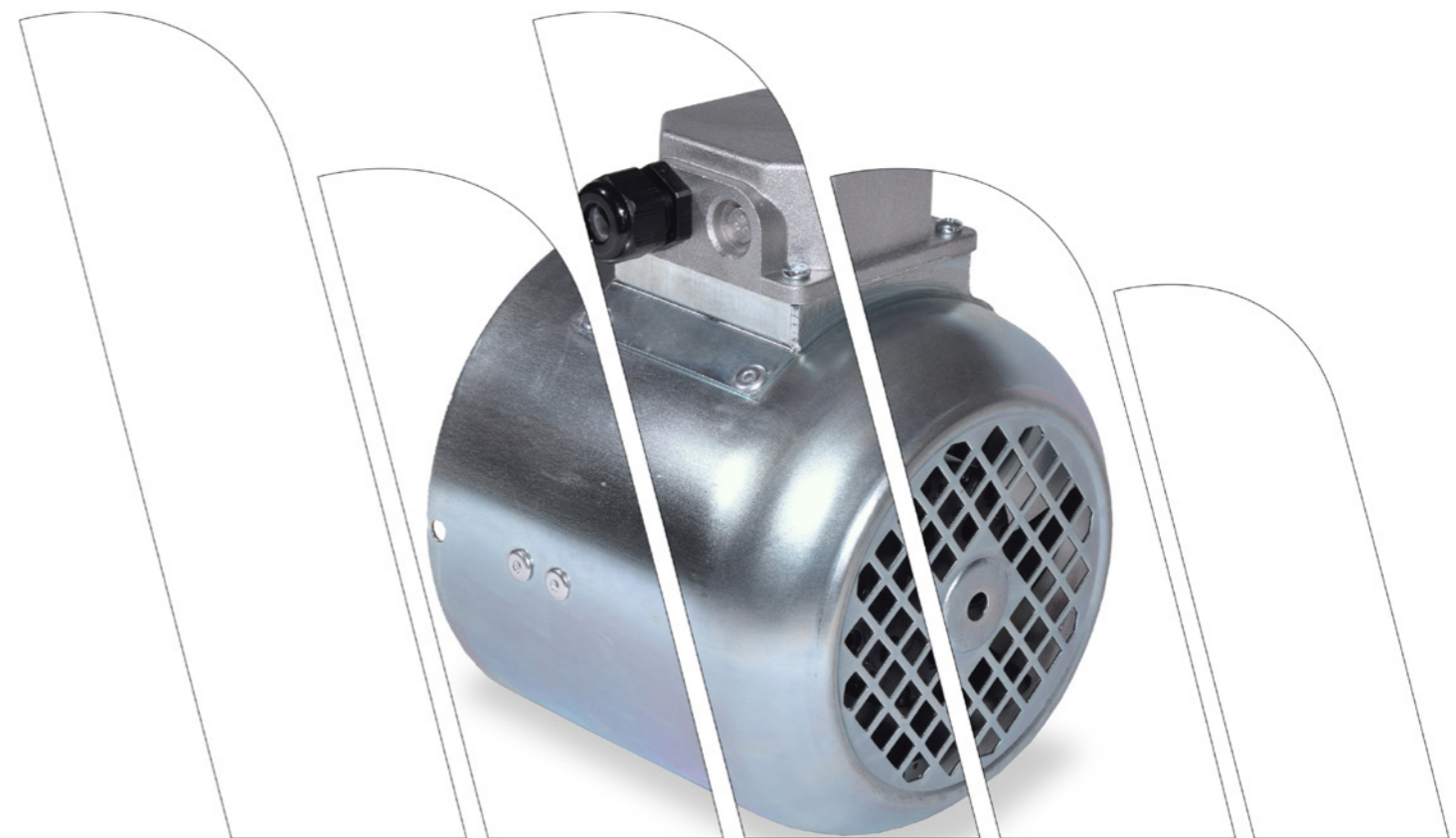




Made in Italy EU



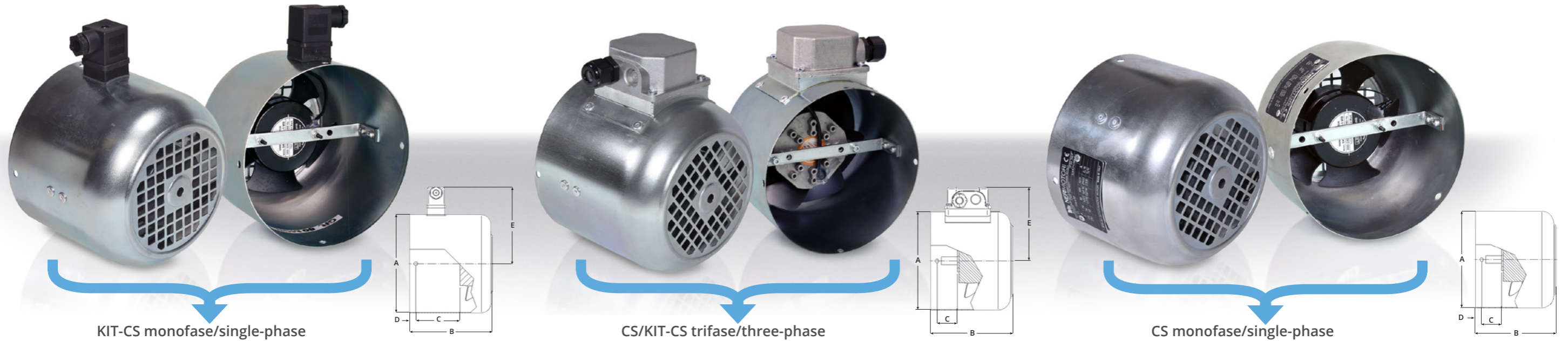
## KIT VENTILAZIONE FORZATA - *FORCED VENTILATION KIT*



Via A. Fleming 6-8 | 40017 S. Giovanni in Persiceto (BO) Italy | Tel. +39 0516870911  
info@nerimotori.com | www.nerimotori.com



REV.2 05/17



## Tutti i vantaggi della ventilazione forzata in kit

Una nuova serie di versatili servoventilazioni in KIT di pronto montaggio che introduce notevoli vantaggi pratici rispetto al passato:

- possibilità di aggiungere la ventilazione forzata in un motore standard autoventilato esistente
- peso e dimensioni più ridotti nelle servoventilazioni trifase (senza motorino ma con elettroventola)
- semplicità di installazione (si smonta il copriventola e si sostituisce con il KIT-CS collegando solo 2 fili, anche nel trifase)

## All the advantages of forced ventilation in kit form

A new series of versatile servo fans in ready-to-fit KIT form that introduces considerable practical advantages compared to the past:

- the option of adding forced ventilation to an existing standard self-ventilated motor
- reduced weight and smaller size for three-phase servo ventilation (no motor but with an electric fan)
- easy installation (just remove the fan cover and replace it with the KIT, just 2 wires to connect, even on the three-phase)

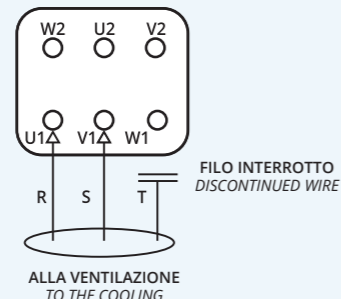
## Configurazioni dei kit e prestazioni facilmente identificabili

Le versioni CS sono montate direttamente in azienda su motori ordinati con servoventilazione

## Easily identified kit configurations and performance

The CS versions are assembled directly in the factory to motors ordered with servo fans

Per il collegamento è sufficiente interrompere uno qualsiasi dei 3 fili in quanto si tratta di una ventola monofase a 400 V



For connection just discontinue any of the 3 wires as the fan is a single-phase 400V

Taglia motore Motor Size	CS [mm]					KIT CS [mm]					Portata aria Air flow rate [m <sup>3</sup> /min] 50/60Hz	
	Codice Neri Code Neri	A	B	C	D	Codice Neri Code Neri	A	B	C	D		E
56	KS56SW01	110	90	38	5	KS56SW03	110	90	37	5	99.5	1,2/1,5
63	KS63SW01	123	102	38	6	KS63SW03	123	115	51	8	104	2,6/3,1
71	KS71SW02	138	95	35	6	KS71SW04	138	115	59	6	112	2,6/3,1
80	KS80SW03	156	115	55	10	KS80SW09	156	130	69	10	120.5	3,3/3,7
90S	KS90SW04	176	100	33	10	KS90SW09	176	140	72	6	131	5,2/5,9
90L	KS90SW04	176	100	33	10	KS90SW09	176	140	72	6	131	5,2/5,9
100	KS10SW01	195	125	53	10	KS10SW06	195	155	89	6	140	5,2/5,9
112	KS11SW01	220	120	50	10	KS11SW08	220	175	98	15	151.5	5,2/5,9
132S	KS13SW01	258	220	109	10	KS13SW04	258	220	109	10	171	15,9/14,2
132M	KS13SW01	258	220	109	10	KS13SW04	258	220	109	10	171	15,9/14,2
160M	KS16SW01	315	270	155	15	KS16SW03	315	270	155	15	196.5	15,9/14,2
160L	KS16SW01	315	270	155	15	KS16SW03	315	270	155	15	196.5	15,9/14,2
180	KS18SW01	350	350	205	75	KS18SW03	350	350	205	25	215.5	28,3/29,7
200	KS20SW01	350	350	155	25	KS20SW03	350	350	155	25	215.5	28,3/29,7

Taglia motore Motor Size	CS					KIT CS					Portata aria Air flow rate [m <sup>3</sup> /min] 50/60Hz		
	Codice Neri Code Neri	A	B	C	D	E	Codice Neri Code Neri	A	B	C		D	E
56	KS56SW04	110	90	37	5	92	KS56SW02	110	90	37	5	92	0,8/0,9
63	KS63SW07	123	102	40	6	100	KS63SW06	123	115	51	8	100	2,6/3,0
71	KS71SW07	138	95	33	4.5	106	KS71SW06	138	115	54	6	106	2,6/3,0
80	KS80SW14	156	115	32	10	117	KS80SW13	156	130	57	5	117	5,2/5,9
90S	KS90SW12	176	100	34	6	129.5	KS90SW11	176	140	86	6	129.5	9,6/11,6
90L	KS90SW12	176	100	34	6	129.5	KS90SW11	176	140	86	6	129.5	9,6/11,6
100	KS10SW08	195	125	39	5	139	KS10SW05	195	155	94	10	139	9,6/11,6
112	KS11SW07	220	120	38	15	151	KS11SW05	220	175	115	10	151	9,6/11,6
132S	KS13SW03	258	220	120	10	172	KS13SW05	258	220	120	10	172	15,9/17,8
132M	KS13SW03	258	220	120	10	172	KS13SW05	258	220	120	10	172	15,9/17,8
160M	KS16SW02	315	270	160	15	203	KS16SW04	315	270	160	15	203	15,9/17,8
160L	KS16SW02	315	270	160	15	203	KS16SW04	315	270	160	15	203	15,9/17,8
180	KS18SW02	350	350	185	25	216.5	KS18SW04	350	350	230	25	216.5	15,9/17,8
200	KS20SW02	350	350	185	25	216.5	KS20SW04	350	350	185	25	216.5	15,9/17,8