

2.4. Reduction Gear Unit LGZ, LGV and LGS

The LEONARD gearbox LG... (see figure 2.4.1 and 2.4.2) is a reduction gear unit free from backlash. Therefore it is especially suitable for driving LEONARD rotary cam switches and incremental position transducers, encoders or the like.

The gearbox is mounted by four screws M8 on the base. Because of a life lubrication the reduction gear unit is maintenance free. The gearbox works free from backlash after a long time, because of prestressed gearwheels.



Fig. 2.4.1:
Reduction Gear Unit LGV 175:1

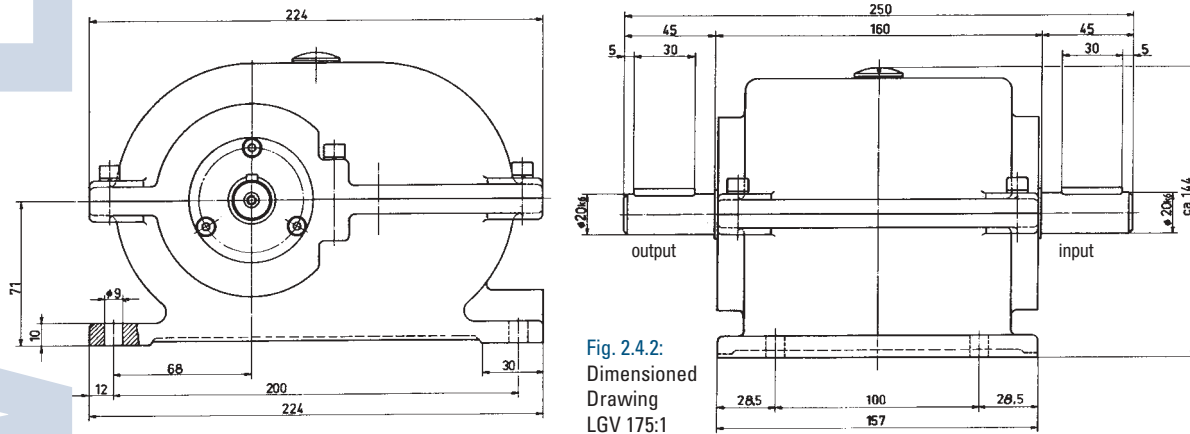


Fig. 2.4.2:
Dimensioned
Drawing
LGV 175:1

Mechanical data:

housing:	cast aluminum
housing colour:	RAL 6011, „green hammer finish“, optional seawaterproof performance
gear wheels:	spur gear, life lubrication, maintenance free
spindle:	$\varnothing 20h6$, ground, with centre hole acc. to DIN 332, with feather key acc. to DIN 6885
arrangement of spindles:	co-axial
bearing:	deep groove ball bearings
max. drive speed:	3000 r.p.m.
max. torque:	80 Nm
fitting position:	any
weight t:	7,5 to 10,5 kg
ambient temperature:	-25 °C to +90 °C
storage temperature:	-30 °C to +100 °C

In dependence to the ratio of the gearbox, it is supplied as a two-step, four-step or six-step gearbox.

As a two-step gearbox LGZ the normally ratios are as follows:

2:1	5:1	8:1	12:1	18:1
3:1	6:1	9:1	15:1	20:1
4:1	7:1	10:1	16:1	25:1

Other ratios on request.

As a four-step gearbox LGV the normally ratios are as follows:

35:1	75:1	154:1	248:1	352:1
45:1	100:1	175:1	275:1	400:1
54:1	125:1	200:1	300:1	

Ordering instructions for reduction gear unit:

type	ratio
------	-------

Example:

LGV 175:1