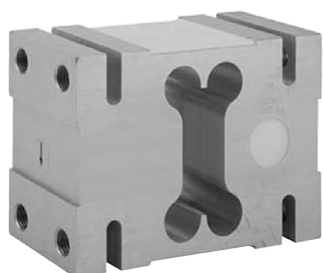


LOAD CELLS
off center
1320


Capacities 1000–2000 kg
 Aluminum construction
 Single-point 1200 x 1200 mm platform
 OIML R60 and NTEP approved
 IP66 protection
 Available with metric threads

Optional:

EEx ia IIC T4 hazardous area approval
 FM approval available

TECHNICAL CHARACTERISTICS 1320

Rated capacity—R.C. (Emax):	1000, 1500, 2000 kg
Maximum no. of intervals (n):	3000
Rated output—R.O.:	2.0 mV/V
Rated output tolerance:	0.2 ±mV/V
Zero balance:	0.2 ±mV/V
Zero return, 30 min:	0.0170 ±% of applied load
Total error:	0.0200 ±% of rated output
Temperature effect on zero:	0.0023 ±% of rated output/°C
Temperature effect on output:	0.0010 ±% of applied load/°C
Temperature range, compensated:	-10 to +40 °C
Temperature range, safe:	-30 to +70 °C
Maximum safe central overload:	150 % of R.C.
Ultimate central overload:	300 % of R.C.
Excitation, recommended:	10 VDC or VAC RMS
Excitation, maximum:	15 VDC or VAC RMS
Input impedance:	415±15 Ohms
Output impedance:	350±3 Ohms
Insulation resistance:	>2000 MOhms
Cable length:	5 m
Applications:	Very large platform scales; Crane Scales; Check weighing





LOAD CELLS

off center

1320

