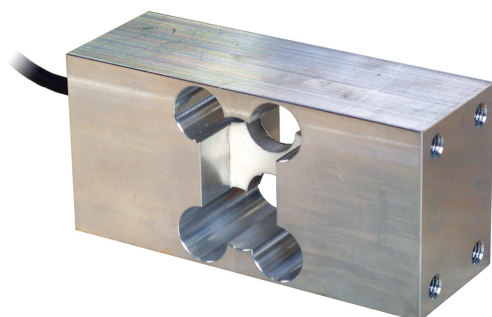


LOAD CELLS

off center

C2Z1



- High accuracy single point
- Used in commercial electronic scales
- Low cost and simple assembly
- Featuring moistureproof sealant
- Meets 3000 d OIML and NTEP accuracy specifications

TECHNICAL CHARACTERISTICS C2Z1

Rated load (RL):	60, 120, 150, 300 kg
Safe overload:	150% of R.L.
Ultimate overload:	250% of R.L.
Linearity:	0.02% of R.O.
Hysteresis:	0.02% of R.O.
Repeatability:	0.02% of R.O.
Creep (20 minutes):	0.025% of R.L.
Compensated temperature range:	-10 ÷ +50 °C
Temperature range:	-10 ÷ +70°C
Temperature Effect on Zero Balance	0.028% of R.O./°C
Temperature effect on output	0.011% on output/°C
Rated Output:	1.9 ± 0.1 mV/V
Recommended input:	12 V
Maximum input:	20 V
Zero Balance:	±5% of R.O.
Input resistance:	400 ± 20 Ohm
Output resistance:	350 ± 5 Ohm
Insulation Resistance:	< 1000 Ohm
Cable Diameter:	7 mm
Cable Length:	0,5 m
Weight:	1 kg
Material:	Alluminum

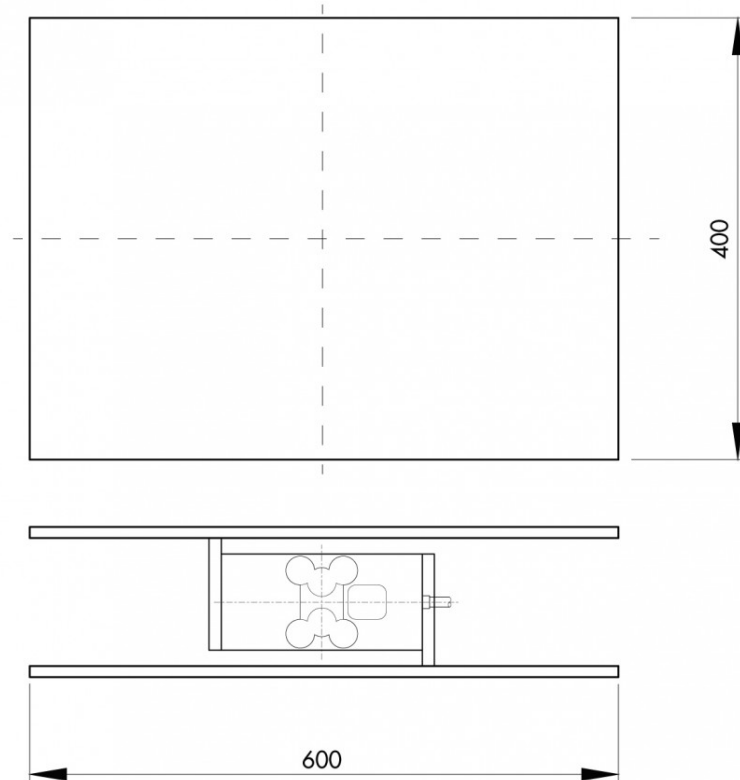




LOAD CELLS

off center

C2Z1



Electrical Connection	
+Excitation	Red
-Excitation	White
+Signal	Green
-Signal	Blue
Shield	Cable shield
Error is within 0.02% SN applied with 1/2 of capacity at the position of 150mm of eccentricity	
The center of loading plate and the center of the load cell should be the same position	





LOAD CELLS

off center

C2Z1

