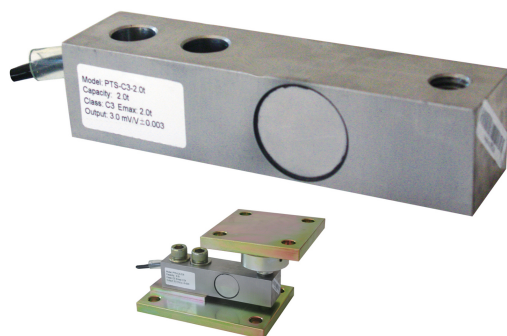




LOAD CELLS

shear beam

PTS



Excellent accuracy, linearity and creep

Made of stainless steel

Approved 3000 division O.I.M.L. R60 Class C

Strength to lateral loads higher than 50% of the PN

IP67 protection Weighing of tanks, hoppers, belts, platforms, single cell systems, suspended load, automatic packaging machines for: food&beverage, chemical, pharmaceutical, plastics, metallurgy

TECHNICAL CHARACTERISTICS PTS

Rated load (R.L.):	500, 1000, 2000, 5000 Kg
Combined error:	±0.02% of R.O.
Repeatability:	±0.01 % of R.O.
Creep (30 minutes):	±0.02% of R.O.
Safe overload:	150% of R.L.
Ultimate overload:	300% of R.L.
Recommended input:	5÷15 Vcc/ca
Input resistance:	350 ± 3.5 Ohms
Output resistance:	350 ± 3.5 Ohms
Insulation resistance:	GREATER/EQUAL 5000 M Ohms 50 VDC between the branches of the bridge and the body cell
Rated output (R.O.):	3 ± 0.008 mV/V
Zero balance:	1% R.O.
Temperature range:	-35 ÷ +65°C
Compensated temperature range:	-10 ÷ +40°C
Temp. effect (-10° to +50°C) on zero balance:	0.018% SN/10°C
Temp. effect (-10°C to +50°C) on output:	0.014% on output/10°C
Degree of protection:	IP67
Material:	Stainless steel
Electrical connection:	4 conductors shielded cable; length 6 m
Precision class:	3000 n. OIML

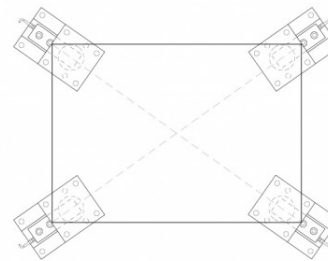
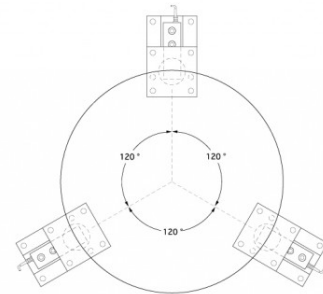
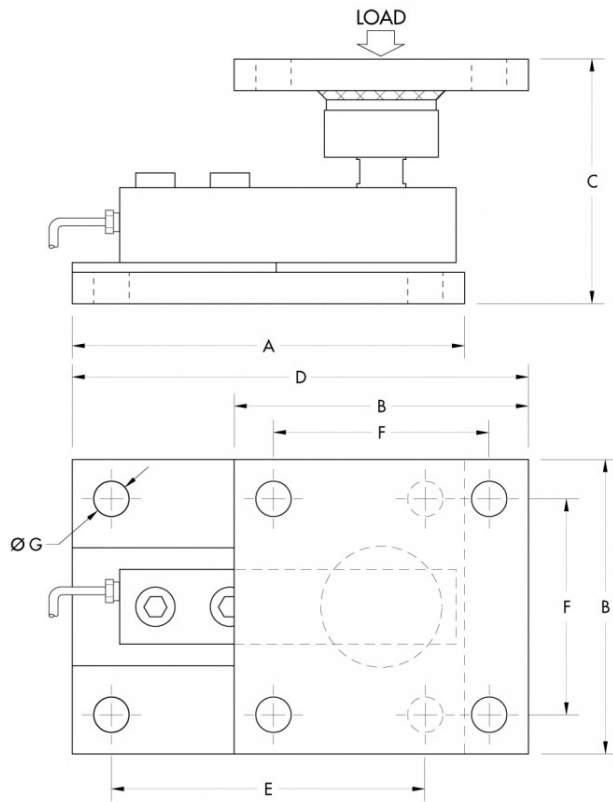




LOAD CELLS

shear beam

PTS



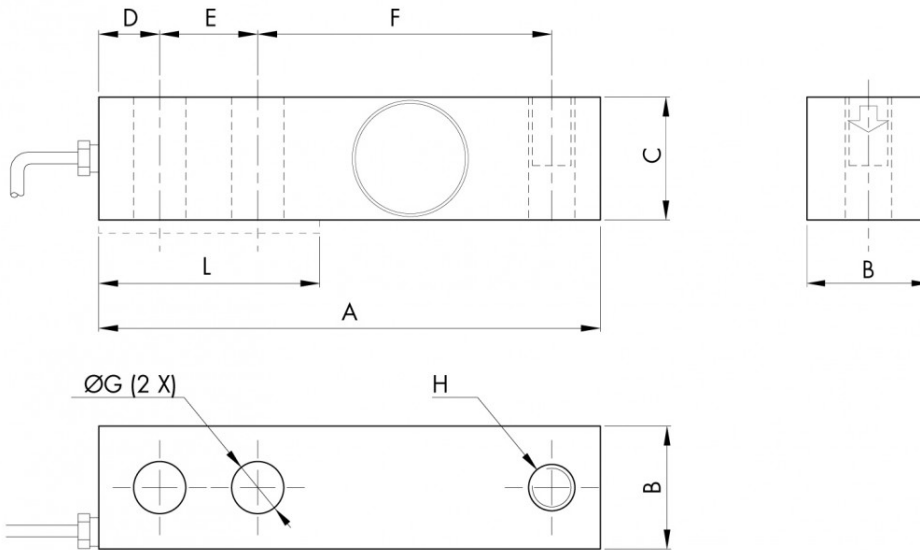
CAPACITY kg	500-2000	5000
A	150	200
B	100	150
C	98/101	120/123
D	181.6	248.4
E	120	160
F	70	110
G	13	18



LOAD CELLS

shear beam

PTS



Electrical Connections	
+Excitation	Red
-Excitation	Black
+Signal	Green
-Signal	White
Shield	Cable Shield

CAPACITY kg	500-2000	5000
A	130	171
B	31.32	36.8
C	31.32	36.8
D	15.7	19.05
E	25.4	38.1
F	76.2	95.25
G	13.4	20.65
H	M12x1.75	M20x2.5
L	57	76

