



CONTACTLESS TRANSMISSION

CF 032

2 CHANNEL CONTACTLESS ACTIVE DATA TRANSMISSION ROTARY JOINT



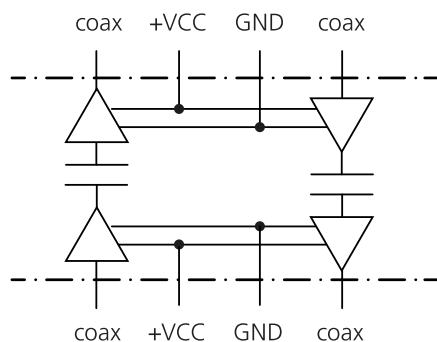
ELECTRICAL DATA

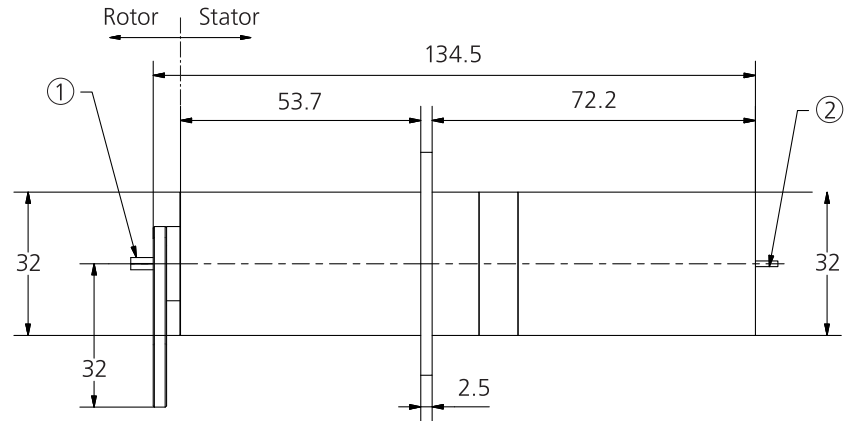
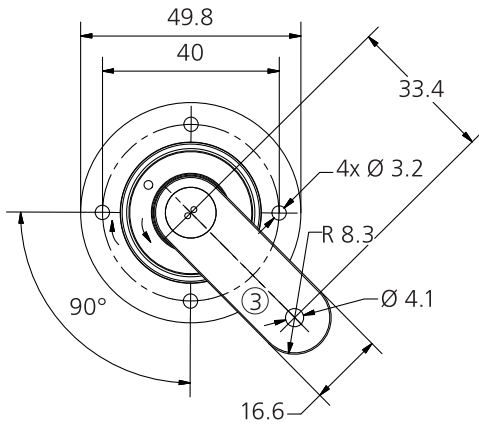
Number of channels:	2
Transmission bitrate:	per channel (full duplex) 0,155 Gbps - 1,25 Gbps 0,155 Gbps - 2,95 Gbps on request
Power supply:	3,0 ... 3,5 V / 150 mA (needed on rotor- and stator-side)
Differential Input Signal:	200 mV - 2400 mV ($R_i=100 \Omega$)
Output Amplitude:	400 mV - 600 mV ($R_a=50 \Omega$)
Transmission:	bidirectional, both data streams in one direction on request

MECHANICAL DATA

Speed:	max. 1000 min ⁻¹
Protection class:	IP 40
Temperature:	-20 °C ... +80 °C (-5 °F ... +175 °F)
Rotor / Stator conn.:	300 mm leads; AWG 28/19 (0,1 mm ²) Coax 50 Ω Impedance, 75 Ω on request
Bearings:	ball bearings of steel
Housing:	made of aluminium
Assembly:	flange to be clamped, anti rotation bar to be mounted with back lash

ELECTRICAL PRINCIPLE





- ① Electrical connection rotor
2 RF coaxial cables
2 leads for power supply

- ② Electrical connection stator
2 RF coaxial cables
2 leads for power supply

- ③ Anti rotation bar