

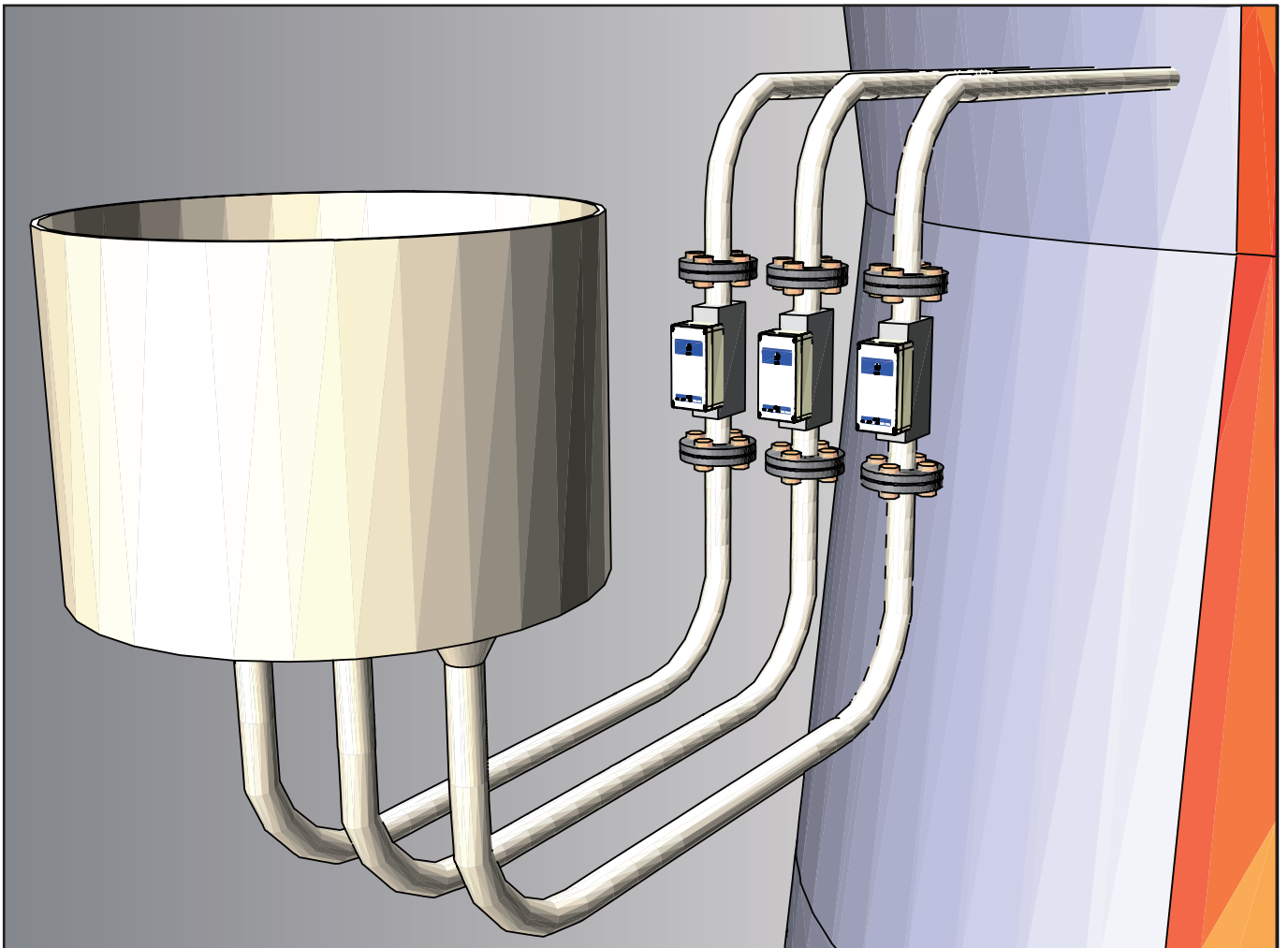


MICROWAVE TYPE PCI FLOW METER

MWS-MF-1 PAT.PEND.

MICRO-FLOW

**The use of microwaves allows
for stable measurement of the PCI flow!**

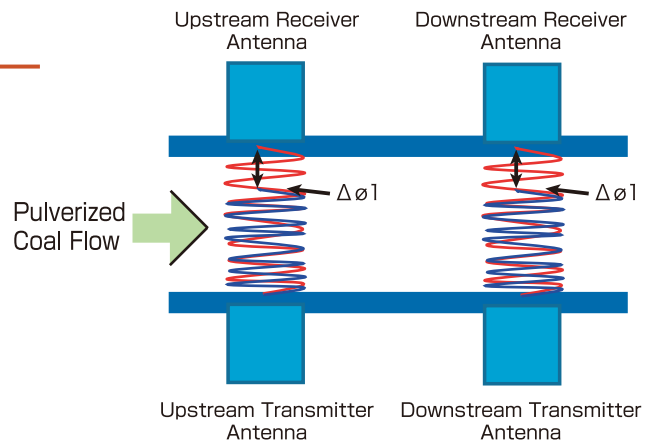


WADECO CO.,LTD.

The use of microwaves allows for stable measurement of the PCI flow!

General

The MWS-MF-1 (Microflow) is installed on the coal feeding pipe of the blast furnace tuyere and measures the density and speed of the fine coal in order to calculate and output the flow rate.



Special Features

1. High accuracy, high reliability

- There is a very good linearity between the phase delay and density. Due to this, low density to high density will be measured with high accuracy.
- The speed is calculated by the intercorrelated time difference in density between the upstream side and downstream side.
- The sensor's inner pipe is made of microwave penetrable ceramic to prevent abrasion and there is no protrusion in it.

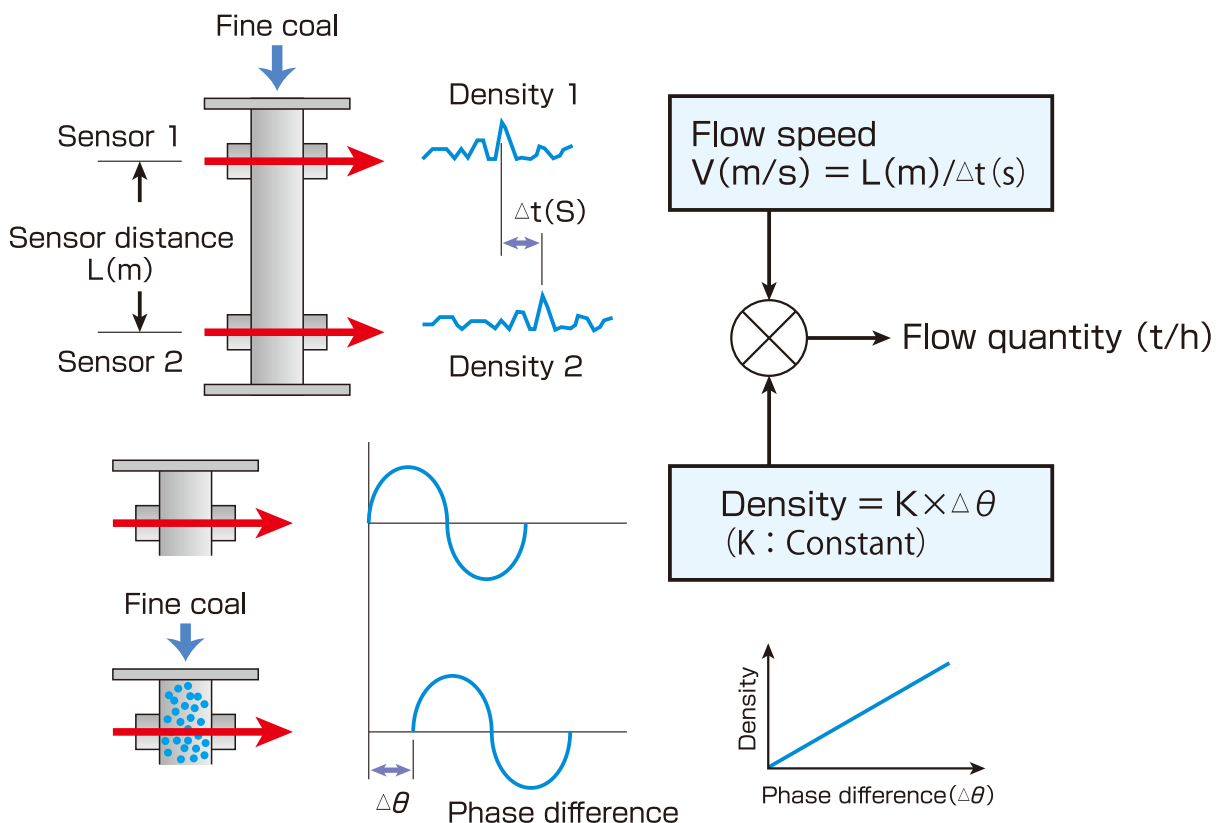
2. Continuous measurement can be easily performed.

- The density and the speed of the fine coal flowing in the pipe can be continuously measured because the sensor is installed in the pipeline.

3. Convenient functions are built in

- The system can be set up, the status of operation can be monitored and parameters can be set with a standard laptop.
- The monitoring of the density, speed and quantity of flow are available and can be output by 4-20mA analog output.
- The flow calibration curve can be set and the zero reference point can be adjusted remotely.

Principle

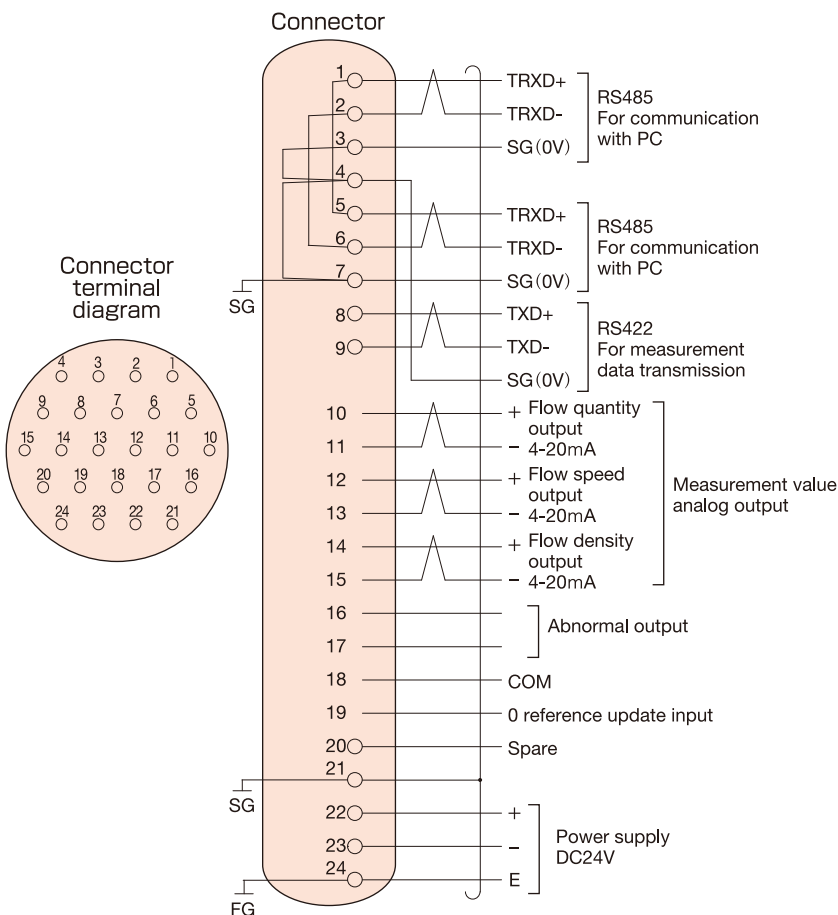


Specifications

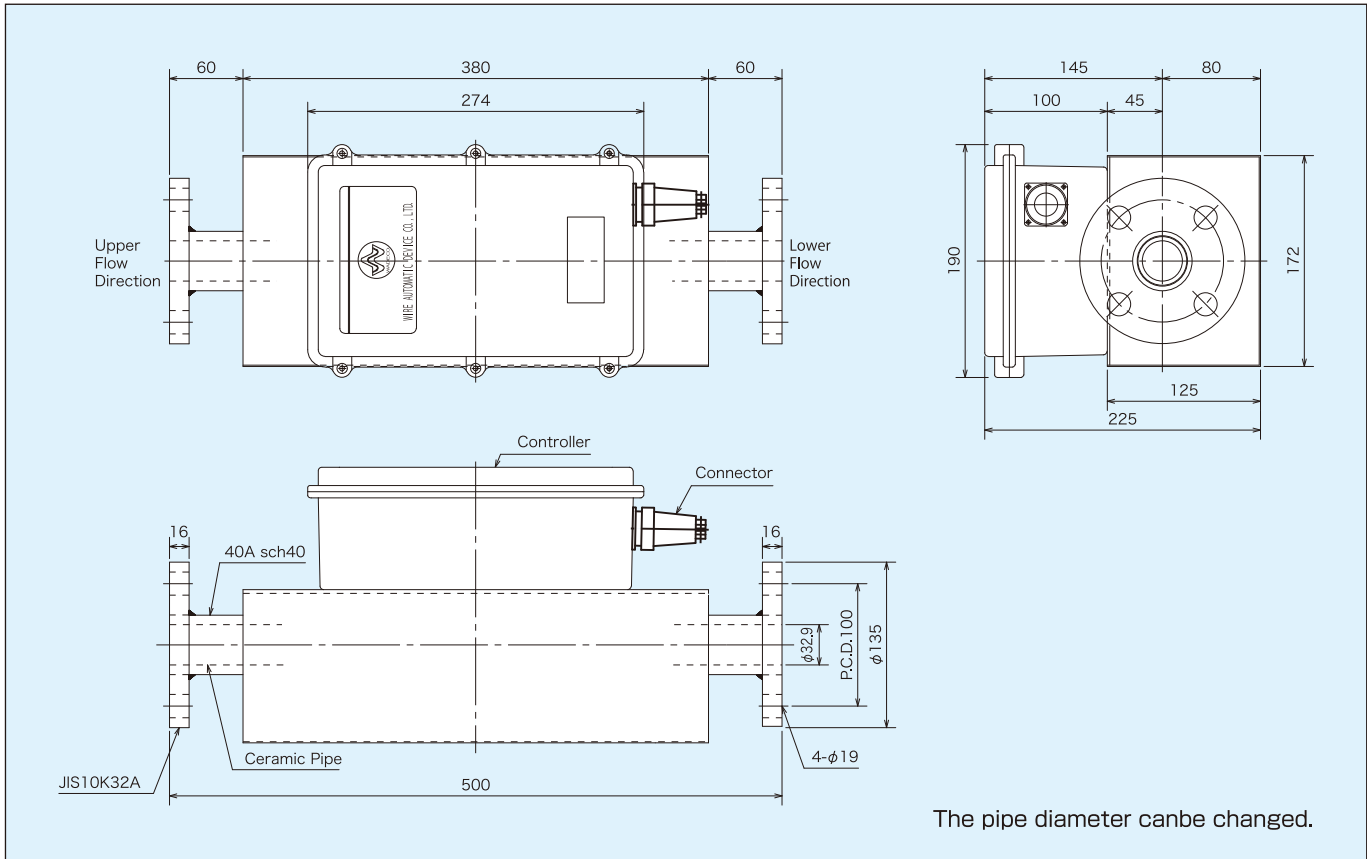
Type	MWS-MF-1	
Power Supply	DC24V±5%	
Measurement Method	Microwave	
Frequency	24GHz	
Measurement	Density	0~100kg/m ³
	Speed	0~20m/s
	Flow	0~3t/h
External Interface	RS-485 Output	For communication with PC
	Analog Output	Density, speed, flow 4-20mA/FS
	Abnormal Output	1a Semi-conductor relay contact DC30V, 0.1A Normal state : Closed Abnormal state : Open
	0 reference update input	Dry contact input
Power Consumption	Approx.10W	

Noise Tolerance	±1.5kV	
Ambient Temperature	-10°C~45°C	
Material Temperature	80°C(Max)	
Fine coal specifications	Particle Size	200mesh pass 70~80%
	Flow Quantity	20~80t/h (0.5~2.0t/h/ pipe)
	Fine coal density	0.5~0.6t/m ³
	Solid/gas ratio	9~10kg/kg
Enclosure Rating	IP65 Equivalent	
Internal Pipe Pressure	1.18MPa	
Flange	JIS10K32A	
Construction	Internal	Ceramic pipe
	External	SUS304 Pipe
Weight	Approx. 20kg	

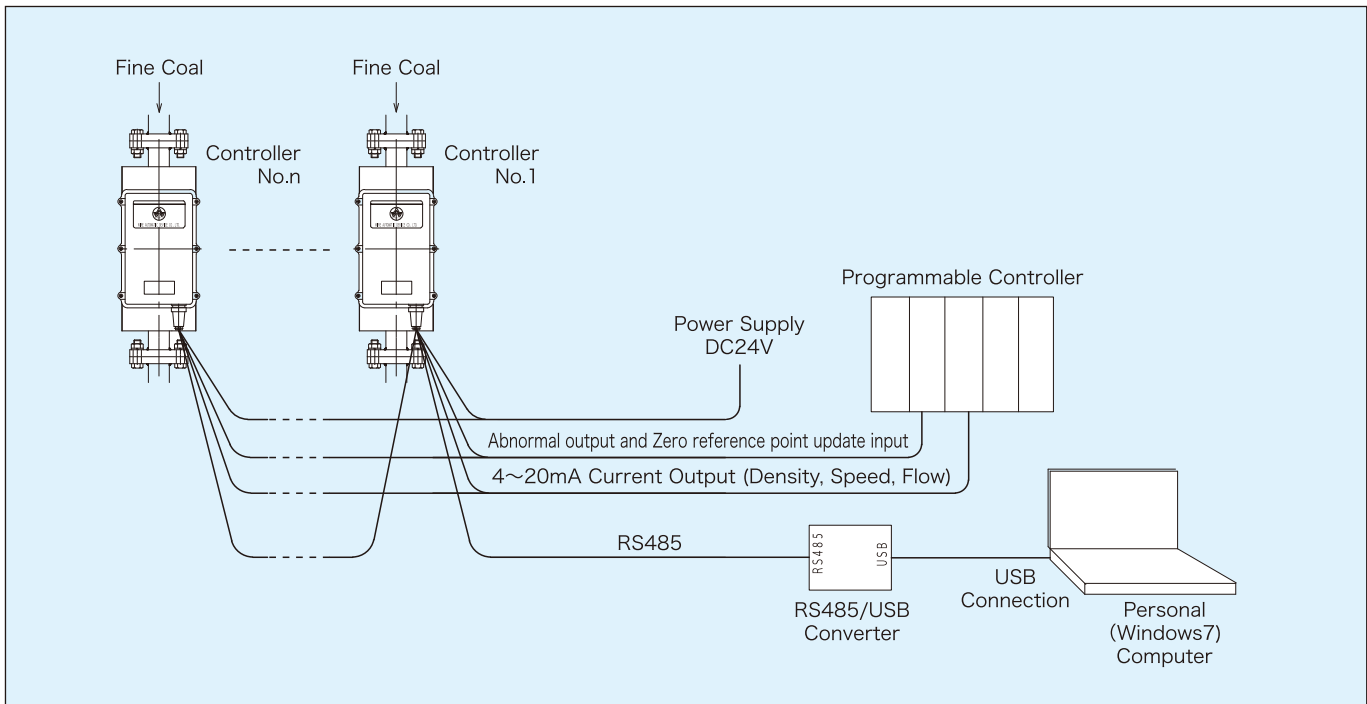
Connector



■Dimensions



■System Example



These specifications may be changed without notice.



WADECO CO., LTD.

HEAD OFFICE WADECO Bld., 1-12-9, Meishin-cho, Amagasaki-shi,
Hyogo-ken 661-0021, Japan
TEL.+81-6-6482-3838 FAX.+81-6-6481-6321

TOKYO BRANCH 202 Shibuya-homes,2-1,Udagawa-cho,Shibuya-ku,Tokyo
150-0042,Japan
TEL.+81-3-3770-5519 FAX.+81-3-3770-5520
URL : <http://www.wadeco.co.jp>