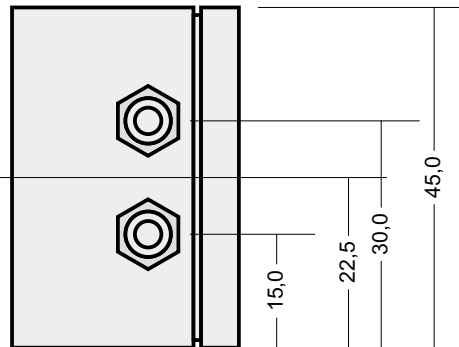
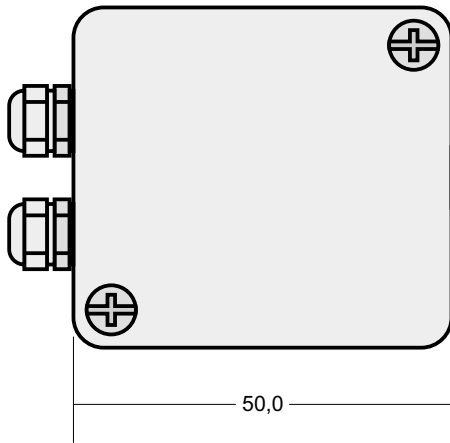
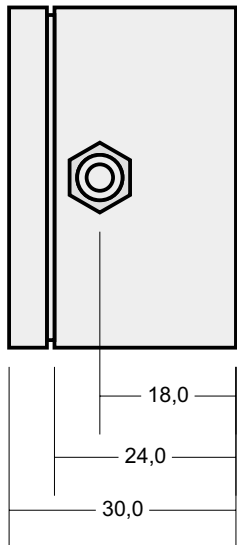
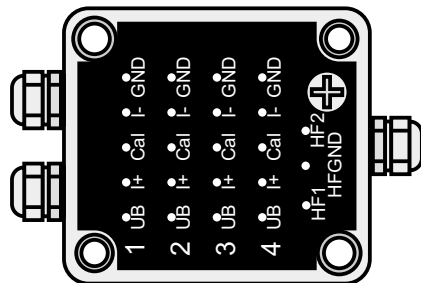


# 4 Channel Sensor Signal Amplifier Type M water proof

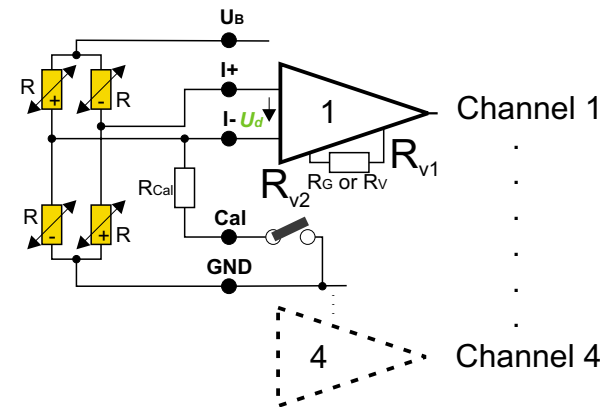
(Standard)



Housing BOPLA A100



Strain gage bridge



## 2/3/4 Channel PCM/FM Transmitter

- For strain gage, PT100, (thermocouple option)
  - Number of channels: 2/3/4
  - Sensitivity: 0,02 mV/V to 20 mV/V
  - Bandwidth: 0 to 50 kHz (-3dB)
  - Strain gage bridge supply: 5, (3,3)\* V
  - Strain gage bridge resistance: 350 (120, 1000)
  - Transmission: inductive sensortelemetry PCM or FM
  - Integrated filter
  - Resolution: 12 (16 bit option)
  - Zero point drift: 0,02, (0,01 option)
  - Remote shunt calibration
  - Environmental temperature range: -25 to +85°C (125°C, 150°C)
  - Max load: 20 000 g (depending on fixing)
  - Protection: IP67
  - Type: MSV\_M\_<channels>\_<accuracy>\_<temp>\_<mod>\_<samplerate>\_wa
- |   |       |     |     |            |    |
|---|-------|-----|-----|------------|----|
| 2 | 0,02  | 85  | FM  | 1000(5000) | wa |
| 3 | 0,01  | 125 | PCM | 666 (3333) |    |
| 4 | 0,003 | 150 |     | 500 (2500) |    |
|   |       |     |     | 4000       |    |
|   |       |     |     | 8000       |    |
|   |       |     |     | 40000      |    |
|   |       |     |     | 200000     |    |