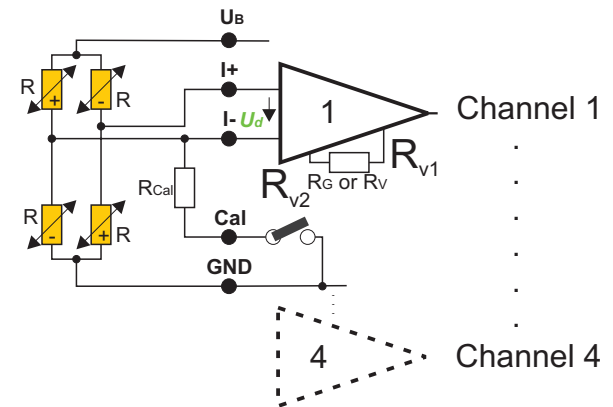
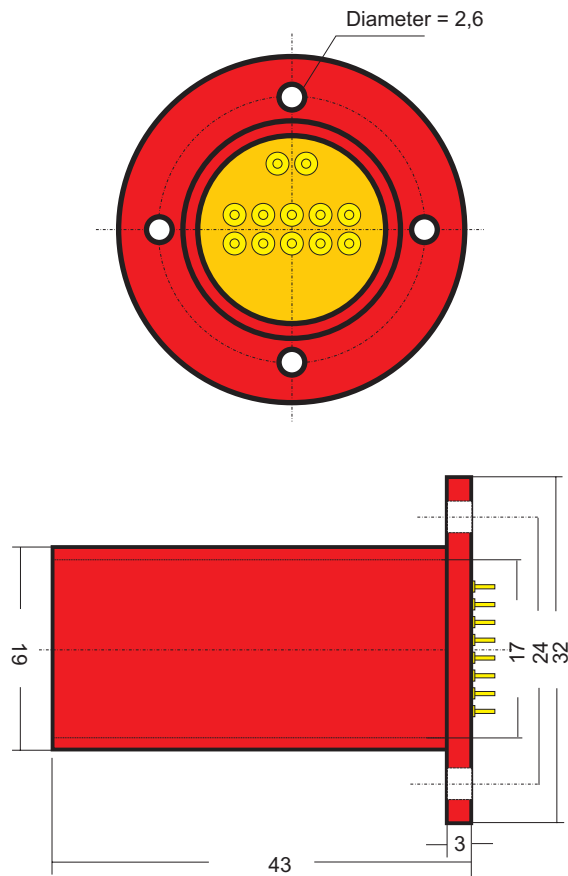


# 4 Channel Sensor Signal Amplifier Type R (Cartridge)

(Standard)



## 2/3/4 Channel PCM Transmitter

- For strain gage, PT100, (thermocouple option)
  - Number of channels: 2/3/4
  - Sensitivity: 0,02 mV/V to 20 mV/V
  - Bandwidth: 0 to 50 kHz (-3dB)
  - Strain gage bridge supply: 5 (3,3\*) V
  - Strain gage bridge resistance: 350 (120, 1000)  $\Omega$
  - Transmission: inductive sensortelemetry PCM
  - Integrated filter
  - Resolution: 12 Bits (16 Bits)
  - Zero point drift: 0,02, (0,01, 0,003 option)
  - Remote shunt calibration
  - Environmental temperature range: -25 to +85°C (125°C, 150°C)
  - Max load: 20 000 g (depending on fixing)
  - Type: MSV\_R\_ <channels>\_ <accuracy>\_ <temp>\_ <mod>\_ <samplerate>
- |   |       |     |     |        |
|---|-------|-----|-----|--------|
| 2 | 0,02  | 85  | PCM | 4000   |
| 3 | 0,01  | 125 |     | 8000   |
| 4 | 0,003 | 150 |     | 40000  |
|   |       |     |     | 200000 |