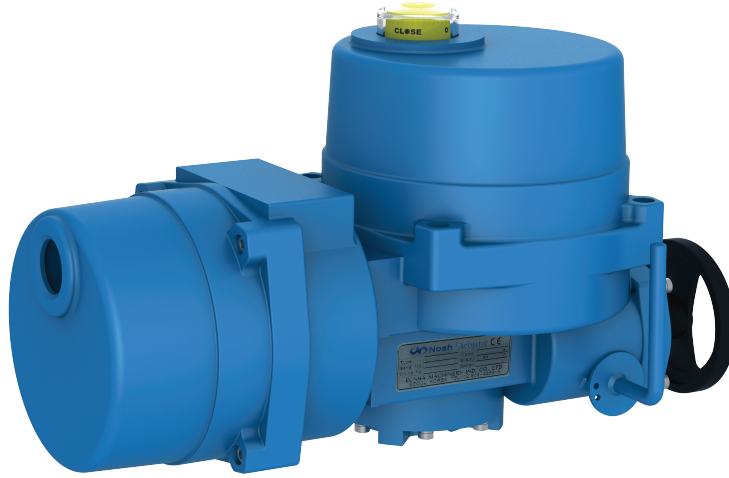


ELECTRIC ACTUATOR

NA SERIES (Built-in Super Capacitor Type)



- Anodized with aluminium alloy and powder coating(Polyester, TGIC-Free) is followed for corrosion protection.
- The enclosure is rated IP67 and sealed with o-rings. It enables actuators to be installed outside. (IEC IP67, NEMA 4 and 6)
- 20W space heater is provided to protect internal components from condensation.
- The gears are self-locking mechanically.
- Torque switches (Open/Close) are provided to protect the actuator and its application electrically and mechanically from overload.
- NA series with SCP are operated by the power of super capacitor in case of power failure.
- Actuators can stop at current position or they can be driven to open or close position depending on user's requirement.
- When a charge lamp blinks super capacitor must be charged. If super capacitor is fully charged it goes off.

PERFORMANCE

Model	Output Torque			Operating Time(90°) (Sec)	Rated Current (A)				Motor Class (W)	Number of Handle Turns	Weight kg	
	Kg.m	N.m	in-lb		50Hz/ 60Hz	DC24V	DC48V	110V				220V
NA006	6	60	521	15	2.5	1.3	0.6	0.3	DC Motor	15	8.5	13.5
NA009	9	90	782	17	3.5	1.8	0.8	0.37	DC Motor	25	8.5	13.5
NA015	15	150	1302	17	4.5	2.4	1.0	0.43	DC Motor	40	10	16
NA019	19	190	1650	19	4.5	2.4	1.0	0.43	DC Motor	40	10	16
NA028	28	280	2431	22	7.0	3.6	2.25	1.13	DC Motor	40	12.5	18.5

STANDARD SPECIFICATION

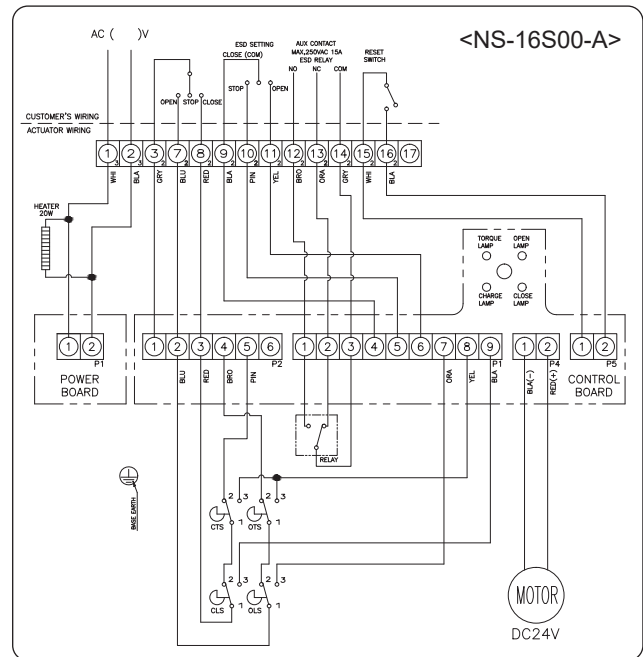
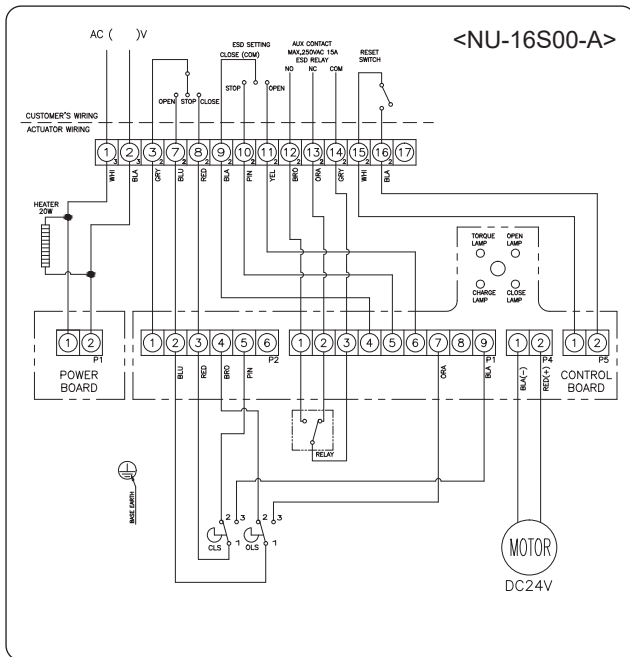
Enclosure	Watertight Ingress Protection 67 Nema 4 and 6		
Ambient Temperature	-20°C to +70°C	Self Locking	Provided by means of Worm Gearing
Power Supply	DC24, DC48, AC90V ~ 260V 50/60Hz	Mechanical Stops	External Adjustable Screws
Torque Switches	2 Open / Close (Except NA006, NA009)	Space Heater	20W
Limit Switches	2 Open / Close, 250VAC 15A Rating	Cable Entries	2-PF 3/4" (Option: M20xPitch1.5, NPT 3/4")
Stall Protection	Built - in Thermal Protection	Lubrication	Shell Gadus S2 V220 2
Travel Angle	90±5°C	Material	Aluminium
Indicator	Continuous Position Indicator	Surface Treatment	Anodizing
Manual Override	Hand / Auto Declutching Mechanism	External Coating	Polyester(TGIC-Free)

BUILT IN SUPER CAPACITOR SPECIFICATION

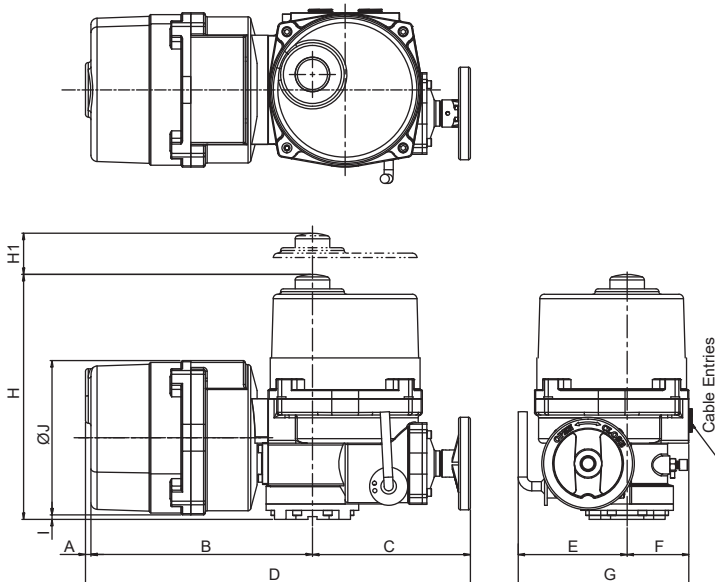
Power Supply	DC24, DC48, AC90V ~ 260V 50/60Hz	Number of Emergency Operating	1 travel (Open to Close or Close to Open)	
Charging Voltage	26.5V	Charging Current	DC24,48V 8.4A	
Charging Time	NA006~019		3 min 30 sec	110V 1.1A
	NA028		2 min	220V 0.45A
Weight	0.7kg			DC24,48V 8.4A
		110V 2.2A		
			220V 1.1A	

! Charge up a super capacitor before use. If the capacitor is not fully charged, emergency operating is not available.

STANDARD WIRING



DIMENSION



	NA006	NA009	NA015	NA019
A	6		6	
B	244		265	
C	174		184	
D	424		455	
E	120		139	
F	68		85	
G	188		224	
H	270		274	
H1	108		108	
I	5		5	
ØJ	170		170	
Base ISO5211	F07 Ø70 / 4-M8 DP12 MAX Ø22		F07 Ø70 / 4-M8 DP12 F10 Ø102 / 4-M10 DP15 MAX Ø22	
Cable Entries	2-PF3/4" (Option : M20xPitch1.5, NPT3/4")			