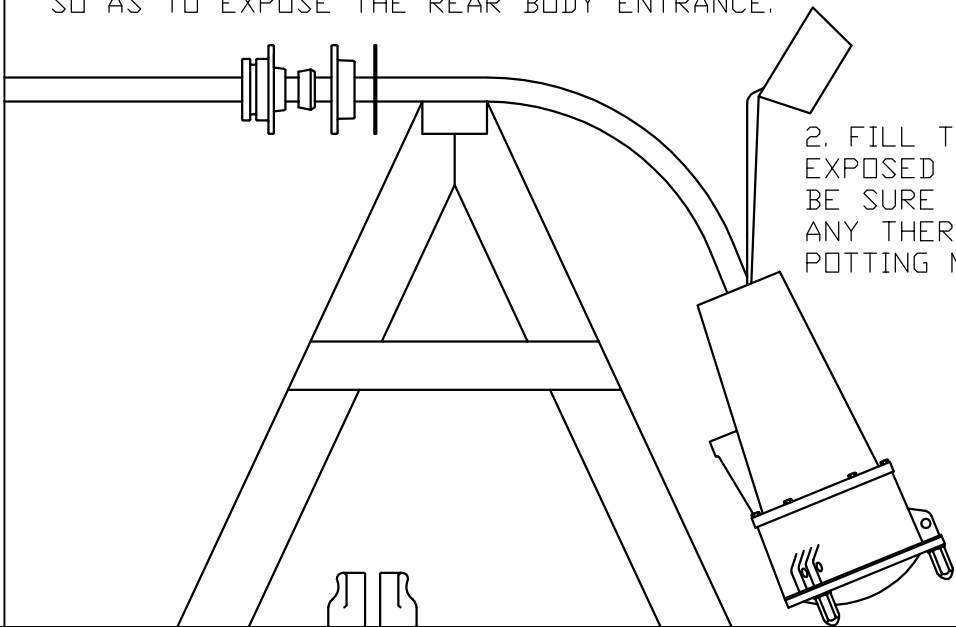
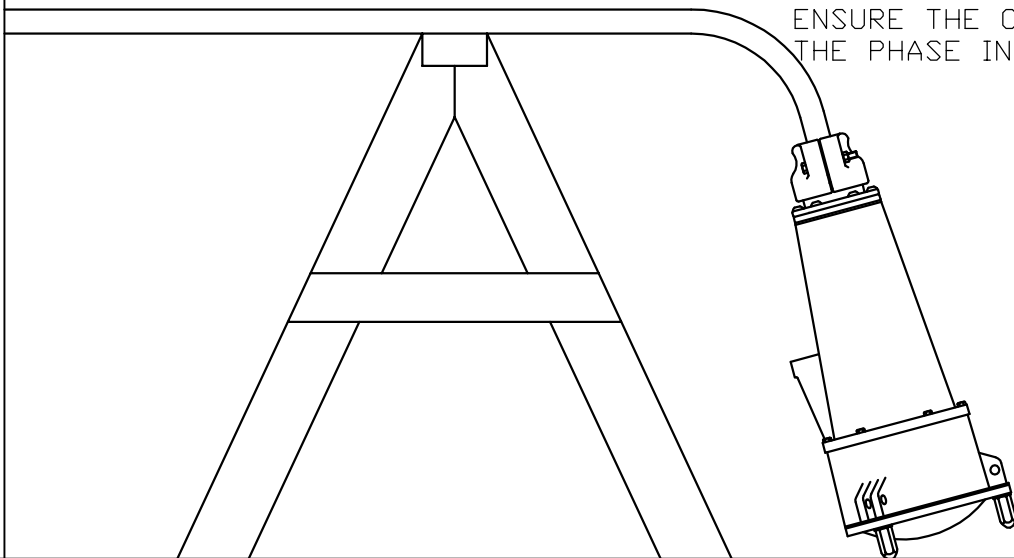


1. AFTER TERMINATING THE CABLE AND PARTIALLY RE ASSEMBLING THE COUPLER ARRANGE THE COUPLER SO AS TO EXPOSE THE REAR BODY ENTRANCE.



2. FILL THE COUPLER THROUGH THE EXPOSED HOLE IN THE REAR BODY. BE SURE TO ALLOW A 1" GAP FOR ANY THERMAL EXPANSION OF THE POTTING MATERIAL.

3. ONCE THE BODY IS FILLED TO THE CORRECT DEPTH FULLY INSTALL ALL THE ENTRANCE FITTING COMPONENTS, TIGHTENING THE HARDWARE.



4. PLACE THE COUPLER AS CLOSE TO VERTICAL AS POSSIBLE, THIS WILL ENSURE THE COMPOUND FULLY FILLS THE PHASE INSULATOR TUBES.

TITLE PROCEDURE FOR POTTING PATTON AND COOKE TRAILING CABLE COUPLERS.



PATTON & COOKE CO.
We make the connection.

DESIGN	DATE	FIRST JOB			
DRAWN	DATE	SCALE	FILE INDEX	PART NO.	REV.
CHECKED	DATE	FILE NO.			