

# Chopper RE367

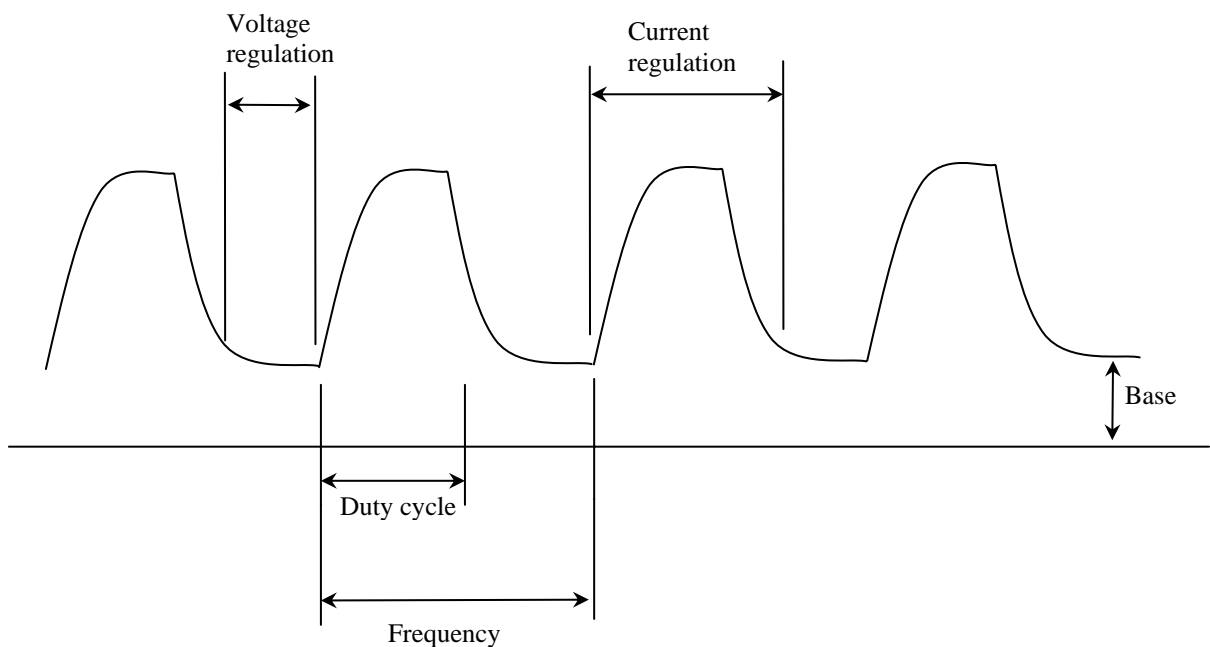
Control board for welding machine based on chopper technology.



The control board provide to all the functions required for welding process.

1) **MIG:** Voltage regulation with current limit and electronic inductance.

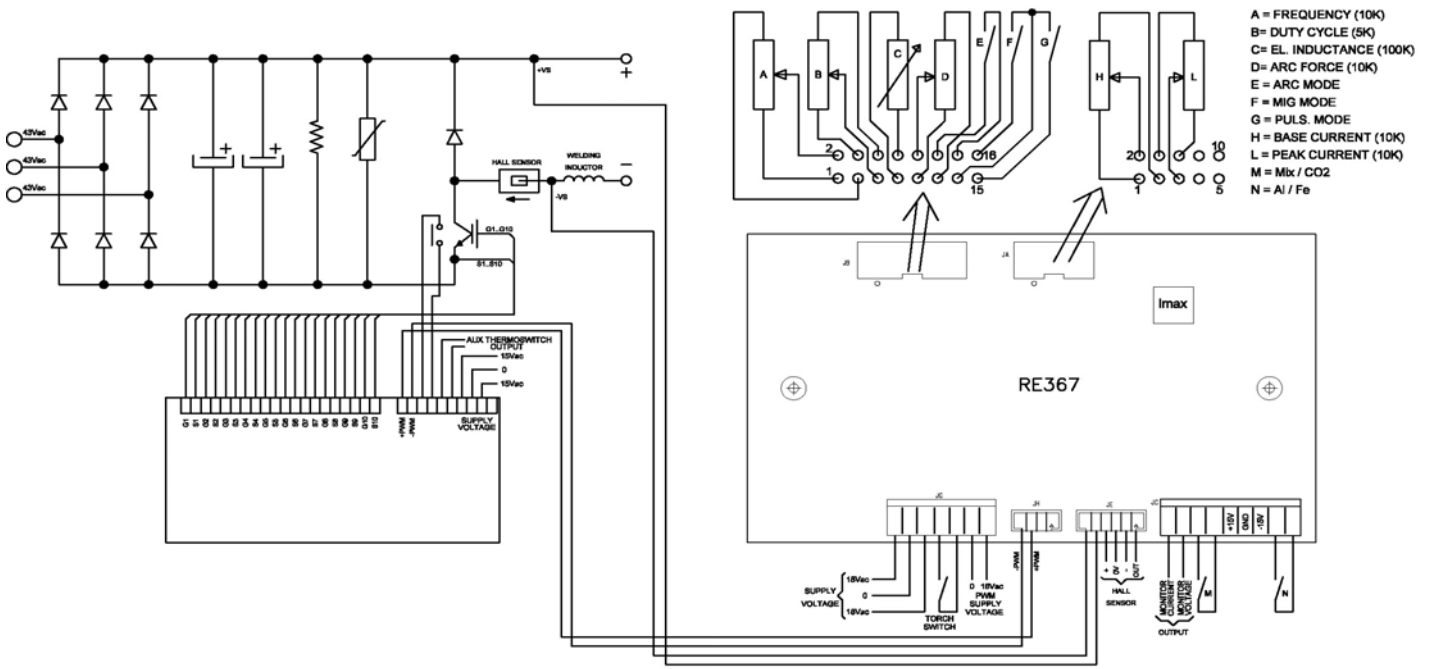
2) **PULSED MIG:**



3) **ELECTRODE:** Constant current regulation with arc force and anti-sticking.

RE367 can be used in analog mode with potentiometer or connected to RE421 for digital interface with synergic regulation.

## Example of Re367 in analog mode:



## Example of Re367 with Re421:

