



ROVSCO

www.rovSCO.com

COMMERCIAL DIVING EQUIPMENT CATALOG



Member of



Member of



Stocking Distributor

Table of Contents

Air Analysis.....	23
Air Filtration.....	20-21
Air Tanks, Storage.....	22
Bailout & Accessories.....	4-5
Burning Rods & Accessories.....	46
Chambers & Hyperbaric Equipment.....	13-19
Clips & Shackles.....	3
Compressors	30-32
Connectors, Cables, & adapters.....	60-64
Dive Panels & Portable Boxes.....	24-26
Diver Tools.....	36-39
Diving Coveralls, Hotwater, & Plain Denim.....	8-9
Gas Detection.....	49-50
Gloves, Socks, Fins, & Wetsuits.....	12
Harnesses & Weight Belts.....	2
Haskell Pump Units	33
Helmets & Bandmasks.....	1
Helmet & Bandmask Parts.....	66-74
Hydraulic Power Packs (HPU).....	34-35
Knives & Flashlights.....	6-7
Lift Bags.....	44-45
NDT Equipment.....	47-48
Radios & Audio communication.....	29
Reels, Hose	28
Suits, Hotwater, and Dry.....	8-11
Umbilicals, Hoses, Cables & Wires.....	27, 64
Valves, Adapters, & Fittings.....	40-43
Video Cameras, Lights & Equipment.....	51-59
Video Panels, Custom designed.....	65

Helmets



Kirby Morgan 37

- 500-050** Helmet, Bare Wire Comms
- 500-051** Helmet, Waterproof Comms



SuperLite 27

- 500-040** Helmet, Bare Wire Comms
- 500-041** Helmet, Waterproof Comms



SuperLite 17B

- 500-010** Helmet, Bare Wire Comms
- 500-011** Helmet, Waterproof Comms



KMB-18 Bandmask

- 500-025** W/Bare Wire Posts
- 500-026** W/ Waterproof comms



KMB-28 Bandmask

- 500-028** W/Bare Wire Posts
- 500-029** W/ Waterproof comms



EXO-BR

- 300-036** No Comms.
- 300-037** Posts
- 300-038** W/ Waterproof comms.

USA
ROVSCO, Inc.
 5263 Barker Cypress Road, Suite 600
 Houston, Texas 77084, USA
 T: +1 281 858 6333
 E: sales@rovSCO.com • www.rovSCO.com



Singapore
ROVSCO ASIA Pte Ltd
 11 Changi South Street No.1, #01-03
 Singapore 486787
 T: (+65) 6546 6526
 E: sales@rovSCOasia.com • www.rovSCO.com

Harnesses and Weight Belts



7 D-Ring Harness
7 D-Ring harness, with backpack. Chest mounted rings for added convenience. Chest strap, stainless rivets and a D-ring mounted to the backpack.
Part #: HARN-ATL-BH-BP-7D



7 D-Ring Full Body Harness
Full body harness with backpack, chest strap, jocking straps, 7 D-rings and made of heavy duty nylon and stainless rivets.
Part #: HARN-ATL-16510



5 D-Ring Bailout Harness
Standard 5 D-ring harness for bailout bottles. Stainless rivets and heavy duty d-ring for lifting in emergencies.
Part #: HARN-ATL-BH-5D



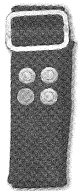
Standby Harness
Standard "H" type harness for the stand-by diver.
Part #: SL-SH-4DH-LG



Shoulder Straps
Shoulder straps for heavy belt with keepers.
Part #: ATWBS



Heavy Belt Strap
Heavy duty rubber strap for commercial weight belts.
Part #: BELT-48



Jocking Strap
For use with bailout harnesses.
Part #: JS-800



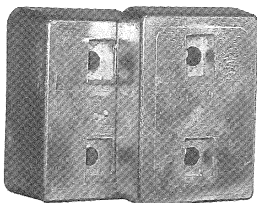
Webbing for Weight Belts
2" webbing for use with weight belts. Cut to length and priced per foot.
Part #: SC-WB01



Stainless Weight Buckle
Stainless steel quick release belt buckle. Accepts 2" nylon webbing.
Part #: WB21
Plastic Buckle: WB30



Scuba Weights
Scuba lead for 2" webbing.
Part #: SCWT4
Part #: SCWT6
Part #: SCWT8
Part #: SCWT10



Commercial Weight
5 or 8lbs. Block
Part #: CWT-5
Part #: CWT-8



Commercial Buckle
Cast bronze buckle with hardware for commercial belts.
Part #: CWB-8101



Backing Plate
Stainless steel backing plate for commercial weights.
Part #: BP-ALT



Screws
1.5" or 2.25" Stainless screws for commercial weights.
Part #: SCRE-1.5
Part #: SCRE-2.25



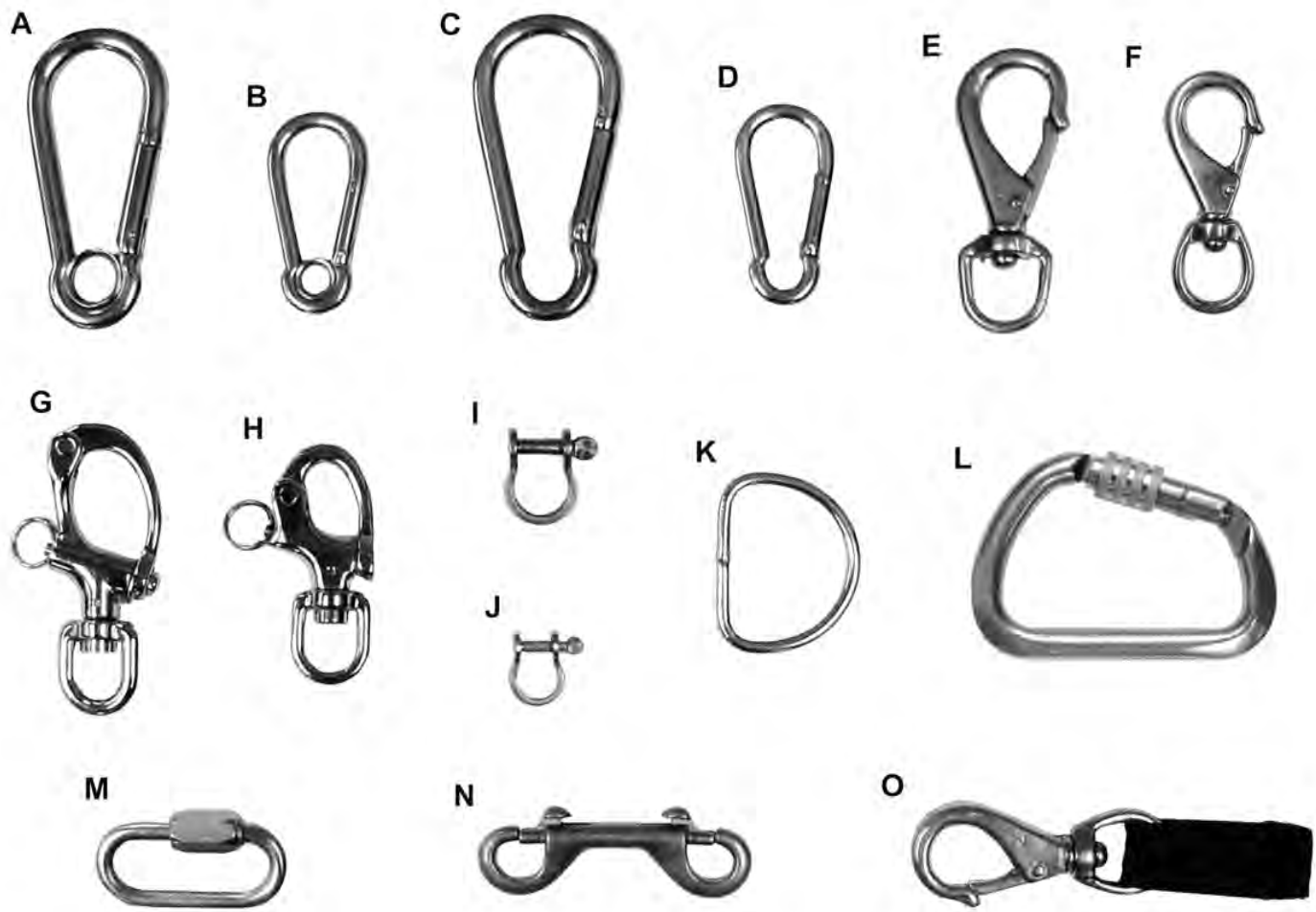
Nut
Stainless nut for weight screws.
Part #: NUT 5/16

USA
ROVSCO, Inc.
5263 Barker Cypress Road, Suite 600
Houston, Texas 77084, USA
T: +1 281 858 6333
E: sales@rovSCO.com • www.rovSCO.com



Singapore
ROVSCO ASIA Pte Ltd
11 Changi South Street No.1, #01-03
Singapore 486787
T: (+65) 6546 6526
E: sales@rovSCOasia.com • www.rovSCO.com

Clips and Shackles



- A. HRD001 Large S/S Carabiner, 4-3/4" with Eye
- B. HRD002 Small S/S Carabiner, 3-1/4" with Eye
- C. HRD003 Large S/S Carabiner, 4-3/4"
- D. HRD004 Small S/S Carabiner, 3-1/4"
- E. 251-3 #3 Brass Swivel Clip
- F. 251B-2 #2 Brass Swivel Clip
- G. NF15000S Large S/S Quick Release with Swivel, 3-3/4"L, 7000# Pull
- H. NF11000S Std. S/S Harness Quick Release with Swivel, 3-1/8"L, 5000# Pull
- NF11010 Snap Shackle Repair Kit
- I. NF1017 Large S/S Shackle
- J. NF1016 Small S/S Shackle
- K. HRD018 2" S/S D-Ring
- L. KNG-511-SSL X-Large S/S Carabena, 4 1/2", Screw Lock, 7840# Pull
- M. HRD006 Small S/S Quick Link
- HRD005 Large S/S Quick Link

- N. HRD012 Brass Double Clip, 4" Long
- O. HRD011 #2 Brass Clip with Nylon Strap
- P. NF11000S-L Std. S/S Harness Quick Release with Swivel, 3-1/8"L, 5000# Pull with 4 1/2" Braided Tarred Twine Lanyard
- Q. Lanyard 4 1/2" Braided Tarred Twine Lanyard for Snap Shackles



USA
ROVSCO, Inc.
 5263 Barker Cypress Road, Suite 600
 Houston, Texas 77084, USA
 T: +1 281 858 6333
 E: sales@rovSCO.com • www.rovSCO.com



Singapore
ROVSCO ASIA Pte Ltd
 11 Changi South Street No.1, #01-03
 Singapore 486787
 T: (+65) 6546 6526
 E: sales@rovSCOasia.com • www.rovSCO.com

Bailout and Accessories



Bailout Whips
 250psi rated bailout whips with your choice of stainless steel or brass quick disconnects.
 Stainless: BW40-SS
 Brass: BW40-BS



Quick Disconnect - Stainless
 High-pressure rated quick disconnects for your bailout whips.
 Coupler: SH2-62
 Nipple: SH2-63



Quick Disconnect - Brass
 250psi rated Brass quick disconnects for your bailout whip.
 Coupler: B23N
 Lock: B23N-SL
 Nipple: BH3C



Bailout Whips, Bare
 Bare whips, 32" and 8".
 250psi rated hose. Replacement for bailout whips above.
 Part #: BW-32
 Part #: BW-8



Sherwood Scuba Regulator
 GR300 regulator. The ideal choice for professional divers.
 Part #: GR300
Balanced Reg: SRB5305
 Part #: SRB5305



Over-Pressure Relief Valve
 200psi relief to save your hose and warn you of potential trouble in your 1st stage.
 Part #: AP0640



Filling Whip
 Whip for use in filling up your bailout bottle from another HP air source. 3000psi Rated.
 Part #: FW-6BS



Submersible Pressure Gauge
 Tank contents gauge, 2.5" for easy viewing of tank contents underwater.
 Part #: PG2225T



Bailout Clamps
 Clamps large enough to fit from 30 to 80 cu/ft. Stainless steel for long life with a worm gear drive.
 Part #: 620-152



Submersible Depth/Pressure Console
 Tank contents gauge and depth gauge combined. 2.5" gauges for easy viewing.
 Part #: GA201

80cu/ft Bailout Bottle
 80cu/ft aluminum SCUBA cylinder.
 Part #: SC-80

50cu/ft Bailout Bottle
 50cu/ft aluminum SCUBA cylinder.
 Part #: SC-50

30cu/ft Bailout Bottle
 30cu/ft aluminum SCUBA cylinder.
 Part #: SC-30



USA
ROVSCO, Inc.
 5263 Barker Cypress Road, Suite 600
 Houston, Texas 77084, USA
 T: +1 281 858 6333
 E: sales@rovSCO.com • www.rovSCO.com



Singapore
ROVSCO ASIA Pte Ltd
 11 Changi South Street No.1, #01-03
 Singapore 486787
 T: (+65) 6546 6526
 E: sales@rovSCOasia.com • www.rovSCO.com

Bailout / Scuba Accessories



Line Valve
3000psi service, NOT for use with HP oxygen. 1/4" fpt in x 1/4" mpt out.
Part #: YVA-3010



HP Yoke
4000psi service, NOT for use with HP oxygen. Standard scuba yoke with bleeder screw, 1/4" fpt out.
Part #: SA4302



Bleeder Screw
Replacement bleeder screw for HP yoke.
Part #: 4302-20



Dust Cap
Dust cap for any standard scuba yoke.
Part #: 5705-20



Yoke Block
Makes any bottle capable of using a scuba yoke.
Part #: 93030-1



Submersible Contents Gauge
Attaches to HP port on the 1st stage for easy reading of contents.
Part #: A120



Hose, 40"
250psi rated hose.
Part #: SLP40



Octopus Regulator
Backup regulator for use in stages or standby-air.
Part #: GS040



Contents Gauge
Contents gauge for bailout bottles. NOT submersible. 4000psi rated yoke with bleeder screw, dust cap and 4000psi dry gauge.
Part #: CG4000

USA
ROVSCO, Inc.
5263 Barker Cypress Road, Suite 600
Houston, Texas 77084, USA
T: +1 281 858 6333
E: sales@rovSCO.com • www.rovSCO.com

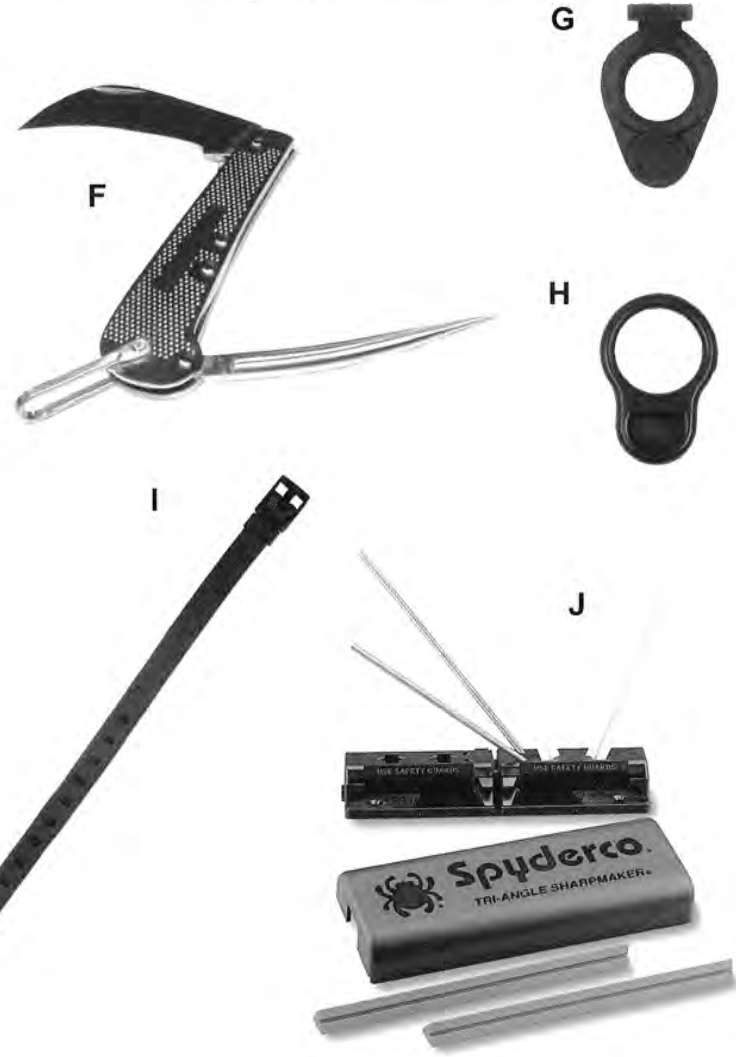


Singapore
ROVSCO ASIA Pte Ltd
11 Changi South Street No.1, #01-03
Singapore 486787
T: (+65) 6546 6526
E: sales@rovSCOasia.com • www.rovSCO.com

Knives



- A. 29228 Mark V Divers Knife
- B. 4226-00 Master Knife, 7" Blade
- C. K001 Navy MK3 Mod 0 Knife
- D. 8261 Deep See Knife, 4" Blade, Blunt or Point Blade
- E. GRK-L Green River Knife, 6.3" Blade, Blunt
- F. CKMAR Cuttin' Horse Marlin Spike, S&W
- G. RP64 Rubber Knife Keeper with Square End
- H. RP43 Rubber Knife Keeper, Round
- I. RP39 Rubber Knife Sheath Strap
- J. 204MF Sharpener, Spyderco , Tri-angle Set, with Training DVD



USA
ROVSCO, Inc.
 5263 Barker Cypress Road, Suite 600
 Houston, Texas 77084, USA
 T: +1 281 858 6333
 E: sales@rovSCO.com • www.rovSCO.com



Singapore
ROVSCO ASIA Pte Ltd
 11 Changi South Street No.1, #01-03
 Singapore 486787
 T: (+65) 6546 6526
 E: sales@rovSCOasia.com • www.rovSCO.com

Knives and Flashlights



Big Chief Knives
 Aluminum handle and stainless steel blade.
 Part #: 45EO-B
 Part #: 45EO-R



Eagle Knives
 Plastic, folding knives with blade locks.
Straight serrated and hooked blade, bare. For rigged knives, add an "R" at the end of the part number.
 Part #: KN31
 Part #: KN32



Scuba Knife
 Straight blade stainless steel knife with serrated and straight edge. Includes sheath.
 Part #: KN83



Scuba Knife
 Straight blade stainless steel knife with serrated and straight edge and line cutter. Includes sheath.
 Part #: KN63



Pelican Super Sabre Light
 The choice of divers world wide. Water resistant to 500fsw. 3 C Cell batteries included.
 Part #: 2000C



Pelican Super Sabre LED
 A new option for divers wanting the brightness of LED's with hours of life.
 Part #: 2010C



Pelican Mity Lite
 A small and very bright light for use underwater.
 Part #: 1900C



Underwater Kinetics SL4 Light
 The standard of underwater lights. 4 C Cell batteries included.
 Part #: SL4

USA
ROVSCO, Inc.
 5263 Barker Cypress Road, Suite 600
 Houston, Texas 77084, USA
 T: +1 281 858 6333
 E: sales@rovSCO.com • www.rovSCO.com



Singapore
ROVSCO ASIA Pte Ltd
 11 Changi South Street No.1, #01-03
 Singapore 486787
 T: (+65) 6546 6526
 E: sales@rovSCOasia.com • www.rovSCO.com

Rovsco Denim Coverall for Diving

Rovsco Denim Coverall has been developed by ex-divers with over 40 years experience in commercial diving. The coverall is made from 100% cotton heavy duty denim to provide comfort and ruggedness around barnacles, etc. during offshore work.

Features:

Made of 100% Cotton heavy duty denim, provides comfort and ruggedness around barnacles, etc. during offshore work.

Coverall is closed at chest with heavy duty Velcro, making it easy to wear or take off.

Velcro bands at wrist and ankles are used to tighten around gloves and boots.

Two large pockets with drain holes, one on either side.

Light reflective strips are provided around sleeves for safety.



SIZE / INFO

ROVSCO-COV-S
 ROVSCO-COV-M
 ROVSCO-COV-L
 ROVSCO-COV-XL
 ROVSCO-COV-XXL
 ROVSCO-COV-XXXL
 ROVSCO-COV-XXXXL

ROVSCO No.

78626-001
 78626-002
 78626-003
 78626-004
 78626-005
 78626-006
 78626-007

USA

ROVSCO, Inc.

5263 Barker Cypress Road, Suite 600

Houston, Texas 77084, USA

T: +1 281 858 6333

E: sales@rovsco.com • www.rovsco.com



Rovsco
 INNOVATIVE DEEP OCEAN TECHNOLOGIES

Singapore

ROVSCO ASIA Pte Ltd

11 Changi South Street No.1, #01-03

Singapore 486787

T: (+65) 6546 6526

E: sales@rovscoasia.com • www.rovsco.com

Rovsco Hotwater Denim Coverall

Rovsco Hotwater Denim Coverall has been developed by ex-divers with over 40 years experience in commercial diving. The coverall is made from 100% cotton heavy duty denim to provide comfort and ruggedness around barnacles, etc. during offshore work. Hotwater circulates within the coverall thru rubber pipes with small holes. This hotwater mixes with the cold water surrounding the body neutralizing the cold temperatures. 3-4 inches of pipe extends into the diver gloves and boots to keep the hands and feet warm. Amount of water flow thru the coverall is fully controlled by the diver thru a easily accessible knob to provide temperature comfortable to him.

Features:

Made of 100% Cotton heavy duty denim, provides comfort and ruggedness around barnacles, etc. during offshore work.

Hotwater, fully controlled by the diver, circulates within the coverall in rubber pipes with small holes, neutralizing the cold water temperatures.

The hotwater circulation is controlled thru a water distribution valve thru a rotary knob conveniently located on the side of the coverall for easy access. The hotwater flows smoothly providing continuous comfort.

Rubber circulation pipes are carefully positioned to keep the diver comfortable and back/chest, abdomen, arms, legs, hands, and feet warm to provide relief to the entire body.

Hotwater coverall is closed at chest with heavy duty Velcro, making it easy to wear or take off.

Velcro bands at wrist and ankles are used to tighten around gloves and boots.

Two pockets with drain holes, one on either side, are provided to store tools, etc.

Light reflective strips are provided around sleeves for safety.



SIZE / INFO

ROVSCO-HW-S
 ROVSCO-HW-M
 ROVSCO-HW-L
 ROVSCO-HW-XL
 ROVSCO-HW-XXL
 ROVSCO-HW-XXXL
 ROVSCO-HW-XXXXL

ROVSCO No.

78627-001
 78627-002
 78627-003
 78627-004
 78627-005
 78627-006
 78627-007

USA
ROVSCO, Inc.
 5263 Barker Cypress Road, Suite 600
 Houston, Texas 77084, USA
 T: +1 281 858 6333
 E: sales@rovSCO.com • www.rovSCO.com



Singapore
ROVSCO ASIA Pte Ltd
 11 Changi South Street No.1, #01-03
 Singapore 486787
 T: (+65) 6546 6526
 E: sales@rovSCOasia.com • www.rovSCO.com

Hot Water Suits and Dry Suits



Hot Water Suit

The DUI hot water suit is made from heavy duty 7mm neoprene and has a heavy duty valve and tubing for hot water distribution.

Part #: 190010

Med-Reg, Med-Tall, Lg-Reg, Lg-Tall, XL-Reg, XL-Tall, 2XL-Reg, 2XL-Tall

Coupler: COUP-BPCH-8-8F

Harvey's Work Capsule Drysuit

Commercial diving rated 7mm neoprene suit with an outer coating of Harvey's Dino-Hide® for abrasion resistance.

Part #: SUIT-SPL1013V

Med, Med-Lg, Lg, XL, 2XL

Harvey's Aqua Capsule Drysuit

Light duty rated 6.5mm drysuit for inspection or sport diving.

Part #: SUIT-SSNT1013V

Med, Med-Lg, Lg, XL, 2XL

Hunter PRO-AM 1050 Drysuit

The Hunter PRO-AM drysuit is a heavy vulcanized rubber suit suited for light commercial work.

Part #: 190010

Hunter Drysuit Options:

- Desco Helmet Yoke
- Genesis Helmet Yoke
- Heavy Duty bottom boots
- Extra Pockets
- Hoods
- Relief Valve
- Zipper Cover
- Cuff Rings
- Glove Systems



Hunter PRO-HRM 1200 Drysuit

The PRO-HRM suit is the only suit of it's kind made from Neoprene Rubber for greater chemical resistance.

Part #: 190010



Hunter PRO-HD 1500 Drysuit

The heaviest duty drysuit available from Bay-Tech. Each suit has greater reinforcements for heavy work on bottom.

Part #: 190010

USA

ROVSCO, Inc.

5263 Barker Cypress Road, Suite 600

Houston, Texas 77084, USA

T: +1 281 858 6333

E: sales@rovSCO.com • www.rovSCO.com



Singapore

ROVSCO ASIA Pte Ltd

11 Changi South Street No.1, #01-03

Singapore 486787

T: (+65) 6546 6526

E: sales@rovSCOasia.com • www.rovSCO.com

Dry Suits

NEW!



Northern Diver Drysuit - THOR 1600

Part #: SUIT-HD1600ST

Northern Divers Heavy-Duty Drysuit with steel-toe option. This suit is a heavy grade rubber material with reinforced crotch, knees and elbows for maximum durability. The suit has a high resistance to chemical and biological permeation, triple welded seams and can be fitted with a neck ring for the Genesis Helmet and dry-gloves to make it suitable for haz-mat diving.

Northern Diver Drysuit Options:

- Genesis Helmet Yoke
- Steel Toe Boots
- Dry Glove System (installed)
- Relief Zipper
- Back or Front Entry
- Neoprene or Latex Hood



Northern Diver Drysuit - THOR 1050

Part #: SUIT-HD1050B

Northern Divers commercial work suit is a great drysuit for light salvage and moderate commercial work. It comes with lightweight boots for slipping swim fins over and is available in front or back entry. *Front entry shown*



Northern Diver Dry-Glove System

Part #: GLOV-HD4600

Northern Diver introduces a revolutionary concept in dry glove systems designed for latex and neoprene wrist seals.

Features

- Revolutionary locking mechanism for quick engagement or release without assistance
- 2 sets of pinch rings to fit varying material thickness
- Durable PVC gloves with textured fingers and palm for enhanced grip
- Resistant to many contaminating agents
- Removable fleece liners for comfort
- Locking tool for drysuit fitting



USA
ROVSCO, Inc.
 5263 Barker Cypress Road, Suite 600
 Houston, Texas 77084, USA
 T: +1 281 858 6333
 E: sales@rovSCO.com • www.rovSCO.com



Singapore
ROVSCO ASIA Pte Ltd
 11 Changi South Street No.1, #01-03
 Singapore 486787
 T: (+65) 6546 6526
 E: sales@rovSCOasia.com • www.rovSCO.com

Gloves, Socks, Fins and Wetsuits



Atlas Gloves
Work gloves with excellent underwater grip.
Part #: 300



Atlas Xtra Gloves
Work gloves with extra knuckle coverage.
Part #: 305



Cotton Gloves
Orange cotton gloves for work topside or underwater.
Part #: MEM9675



Burning Gloves
Lightweight rubber burning gloves.
Part #: MEM5299



Heavy Duty Burning Gloves
Heavy duty black rubber gloves.
Part #: 6300PR



Neoprene Gloves
Akona gloves, 5-finger 3mm with wrist strap.
Part #: AKNG134



Neoprene Socks
Akona socks, 2mm thickness.
Part #: AKBT935



Hard Sole Booties
Durable hard sole booties with zip up side.
Part #: AKBT334



Hood with Bib
Neoprene hood, with bib.
Part #: AKH205 (5mm)
Part #: XSHD600 (6mm)
Part #: XSHD700 (7mm)



Power Fins
Heavy duty rubber fins, great for commercial work.
Part #: FN204



Harveys Wetsuit
2 piece 6.5mm farmer john style suit. Made of softstretch® neoprene for comfort and warmth.
Part #: Q283



Harveys Flex Suit
2 piece, 5mm made from 4way flex neoprene, these suits are extremely comfortable and affordable. If you're looking to purchase a custom suit, try one of these first.
Part #: FLEX-282

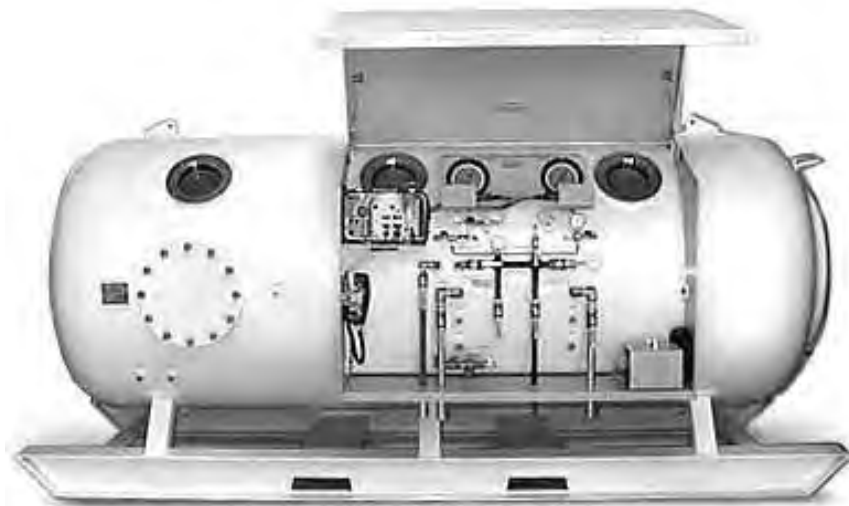
USA
ROVSCO, Inc.
5263 Barker Cypress Road, Suite 600
Houston, Texas 77084, USA
T: +1 281 858 6333
E: sales@rovSCO.com • www.rovSCO.com



Singapore
ROVSCO ASIA Pte Ltd
11 Changi South Street No.1, #01-03
Singapore 486787
T: (+65) 6546 6526
E: sales@rovSCOasia.com • www.rovSCO.com

Chambers (Double Lock Decompression)

Medical Lock
IMCA Requirement



Constructed in accordance with:

ASME/PVHO-1
IMCA
ADC
OSHA
US Coast Guard
DNV or ABS Certification - optional

Standard Equipment

60 inch or 54 inch Double Lock Decompression Chamber.
Blasted and painted white.
2 each of 30 inch O-Ring sealed Manways
4 each 8 inch size view ports
Stainless Steel Penetrators
2 Lifting Eyes on top
1 beam skid with forklift slots
Pressure Relief Valves on each lock
Aluminum Deck Plates
Chambr Mattress
3 x Sound Powered Phones
Aluminum Phone Brackets (powder coated)
Air Silencers inside and out
Chamber Sampling Lines with sampling points on each lock
Communication and Bullhorn Speakers are fitted to each lock
Two Air Inlets
Two oxygen inlets, provided with gauges (2)
Crossover Valve
Check Valve in air circuits

Approximate Weight: 6600 lbs

Optional Equipment

Lights, Halogen or LED
Hyperbaric Fire Extinguisher
Fire Blanket
Bunk
DDC Medical Kit
Caisson Gauges
Analox O2 Analyzer
CO2 Scrubber
3 x O2 Single Whip Bibs
6 x Overboard Dump Masks
Hygrometer
Heating / Cooling Package

USA

ROVSCO, Inc.

5263 Barker Cypress Road, Suite 600

Houston, Texas 77084, USA

T: +1 281 858 6333

E: sales@rovSCO.com • www.rovSCO.com



Singapore

ROVSCO ASIA Pte Ltd

11 Changi South Street No.1, #01-03

Singapore 486787

T: (+65) 6546 6526

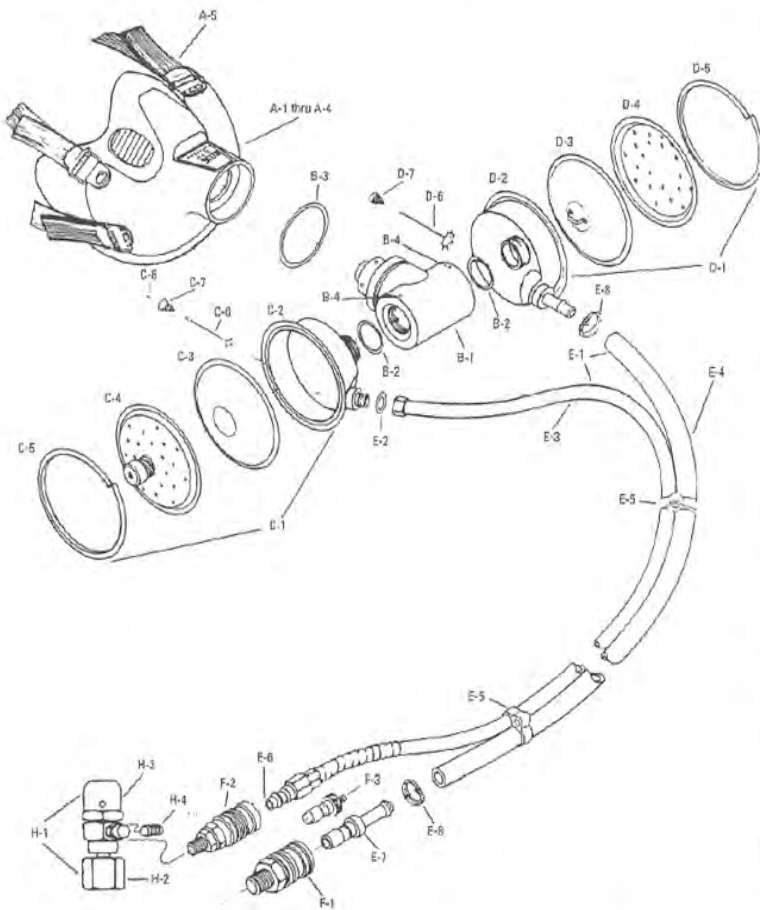
E: sales@rovSCOasia.com • www.rovSCO.com

Hyperbaric Equipment



Scott Pressur Vak II BIBS Mask

The Pressur Vak II is designed to administer oxygen or gas mixtures to a diver or patient in a hyperbaric chamber environment. The demand regulator assembly provides breathing gas on demand (inhalation). The regulator is designed to operate with a constant inlet pressure of 65 to 125 PSIG over chamber pressure.



Item	Part Number	Description
A-1	803152-XX	Face Seal Assy with Headstrap
A-5	803115-01	Head Strap, Elastic
A-7	00-5401	Screw w/o O-Ring (4)
A-8	834-12	Capped T-Nut (4)
A-9	801430-03	Buckle Bar (4)
B-1	803100-01	Manifold Assembly
B-2	18062-00	O-Ring, Manifold Assembly
B-3	21506-01	O-Ring, Manifold to Face Seal
B-4	N/A	Illustration Only
C-1	800954-01	Demand Regulator Assembly
C-2	800956-01	Case Assembly, Includes C-6,7,8,9
C-3	26004-01	Diaphragm, Demand Regulator
C-4	801276-00	Cover, Demand Regulator
C-5	26010-01	Clamp, Regulator Cover
D-1	801274-00	Exhaust Regulator Assembly
D-2	801275-00	Case Assembly, Exhaust Regulator
D-3	801272-00	Diaphragm and Stem Guide Assembly
D-4	10003027	Cover, Exhaust Regulator
D-5	26010-01	Clamp, Regulator Cover
D-6	800963-00	Valve, Exhalation
D-7	13796-00	Spring, Exhalation Valve
E-1	803166-10	Dual Hose Assembly, w/ F-1 and F-2
E-2	2827-49	Gasket, Demand Hose
E-3	26037-10	Demand Hose Assembly, w/ E-2 and F-2
E-4	59719-10	Exhaust Hose Assembly Complete w/E-2, F-2
E-5	10002573	Hose Grommet (3)
E-6	18970-00	Hose Plug, Demand Hose
E-7	59852-00	Hose Plug, Exhaust Hose
F-1	59853-00	Quick Disconnect, Exhaust
F-2	18969-00	Quick Disconnect, Demand
F-3	B-6QDP	Plug for Exhaust Q.D. (optional)
H-1	801804-00	Pressure Reducing Regulator
H-2	8580-00	Coupling, Oxygen
H-3	58370-00	Reducing Regulator Only
H-4	6818-3	Plug
	802005-25	Head Cap/Harness Assembly
	803152-(SIZE)	Face Seal Assembly with Mic
	1408	Microphone Only
	RK-800954-01	Demand Regulator Repair Kit
	RK-801274-00	Exhaust Regulator Repair Kit
	RK-803139-XX	Inhalator Repair Kit

USA
ROVSCO, Inc.
 5263 Barker Cypress Road, Suite 600
 Houston, Texas 77084, USA
 T: +1 281 858 6333
 E: sales@rovSCO.com • www.rovSCO.com



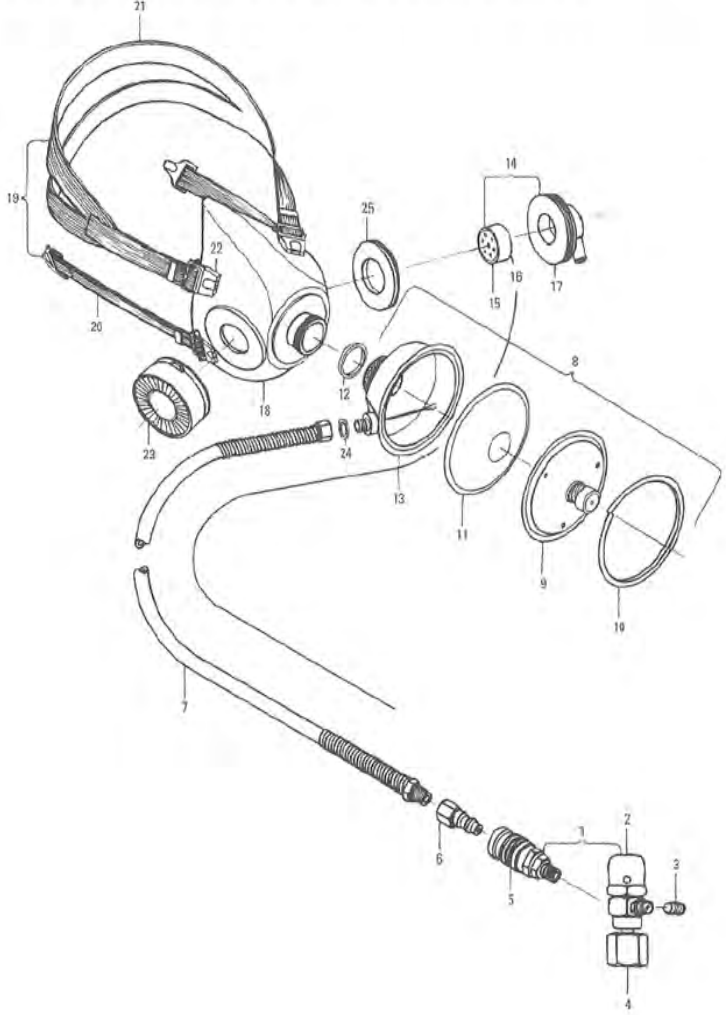
Singapore
ROVSCO ASIA Pte Ltd
 11 Changi South Street No.1, #01-03
 Singapore 486787
 T: (+65) 6546 6526
 E: sales@rovSCOasia.com • www.rovSCO.com

Hyperbaric Equipment



Scott 803600 BIBS Mask

The Scott Series 803600 Inhalator is designed for dry atmosphere decompression in a recompression chamber and other applications where it is desirable to breathe mixtures other than ambient and is not critical if the exhaled gas is vented directly to the chamber atmosphere. This mask is used for surface decompression of persons in a recompression chamber.



Item	Part Number	Description
1	801804-00	1st Stage Regulator Assembly
2	58370-00	Regulator Body Only
3	6818-3	Plug, Regulator
4	8580-00	Coupling, Regulator
5	18969-00	Quick Disconnect
6	18970-00	Hose Plug
7	26037-08	Hose Assembly, 8ft.
8	800227-00	Demand Regulator Assembly
9	26018-01	Cover, Regulator
10	26010-01	Clamp, Regulator
11	26004-01	Diaphragm
12	2827-08	Gasket, Regulator to Faceseal
13	800228-00	Case Assembly
14	27495-00	Microphone Assembly
15	6232-00	Microphone Only
16	58506	Tinsel Line Cord, 8ft.
17	27495-04	Housing, Microphone
18	803677-02	Faceseal w/Straps
19	600118-00	Strap Assembly
22	64001-00	Buckle Bar and Clip
23	64152-02	Exhaust Valve Assembly
24	2827-49	Gasket, Hose
25	10005711	Plug
	Rk-803600	Inhalator Repair Kit
	RK-800227-00	Regulator Repair Kit



USA
ROVSCO, Inc.
 5263 Barker Cypress Road, Suite 600
 Houston, Texas 77084, USA
 T: +1 281 858 6333
 E: sales@rovSCO.com • www.rovSCO.com



Singapore
ROVSCO ASIA Pte Ltd
 11 Changi South Street No.1, #01-03
 Singapore 486787
 T: (+65) 6546 6526
 E: sales@rovSCOasia.com • www.rovSCO.com

Hyperbaric Equipment



Chamber Power Supply

POWESUPACDC-ASSY

The Bay-Tech Industries chamber power supply is a multi-functional device built for all of your chamber power needs. The unit is complete with scrubber on/off switch, dual light outlets and includes dimmer switches.



Chamber Light

Light: STS-LIGH-HBL

Bulb: BULB-HBL-B24

The chamber bunk light is designed for use in a decompression chamber. Three pin connector ensures compatibility. This light is DNV approved.



Chamber Phone, Model 3125

3125

A small package that saves space in the chamber. Complete with talk-back speaker and push to talk switch, sound powered phone, scrubber circuit wiring and has a heavy duty powder-coat finish.



Sound Powered Phone

HAND-SPT-550SC

Sound powered phone with straight cord for use in hyperbaric environments.



Cradle

CRAD-1905-000

Heavy-duty plastic cradle for sound powered phones.



Speaker, DCM-3

SPEA-DCM-3

Heavy-duty 8ohm speaker for internal chamber use.



Speaker, Model 3110

3110

Remote two-way speaker provides paging and answer by activating a push to talk switch.



Speaker, Model 3113

3113

Provides communication between operator and chamber. Headset connection is wired for conference mode.



Speaker, Model 3114

3114

5 watt, 8ohm low cost speaker for chamber operations.

USA
ROVSCO, Inc.
 5263 Barker Cypress Road, Suite 600
 Houston, Texas 77084, USA
 T: +1 281 858 6333
 E: sales@rovSCO.com • www.rovSCO.com



Singapore
ROVSCO ASIA Pte Ltd
 11 Changi South Street No.1, #01-03
 Singapore 486787
 T: (+65) 6546 6526
 E: sales@rovSCOasia.com • www.rovSCO.com

3D Instrument Gauges



Precision Test and Depth Gauges

2554

Series 2554 is the pneumo gauge of choice due to its high accuracy, precision quality, and custom tailored dial readings. Available in readings of PSI, FSW, FFW (Feet of Fresh water), BAR, MSW, ISO and Metric Scales as well as other scales and combinations readings in dual scale. The 2554 was designed as a test gauge to recalibrate other gauges of lesser technologies. Series 2554 comes standard with calibration test certificates.

- Helical Wound Bourdon Tube
- All Wetted Parts in 316SS or Inconel.
- Needle Edged Pointer
- No Recalibration Required
- Longer Field Service Life
- Greater Reading Accuracy
- Maintenance Free
- Corrosion Resistant



Accu-Cal Plus Digital Test Gauge

75514-33B55

The Accu-Cal Plus Digital Test Gauge from 3D Instruments incorporates the ultimate in pressure measurement technology to address the calibration requirements of current process monitoring and control instrumentation. The Accu-Cal Plus combines the accuracy of digital technology with the simplicity of an analog gauge and achieves performance, ease-of-use and a feature set unmatched in the pressure measurement world.

Please refer to page 64 for ordering information

Options

3D can also supply a high accuracy vacuum model. Range is -14.5 to 0 to 30 PSI. Accuracy of pressure is 0.05% of span. Accuracy of vacuum is 0.05% of span.

75114-48B55	All Fitting and flange configurations are available.
76114-48B55	All Fitting and flange configurations are available.



Caisson Gauge

2564

The 2564 Caisson Gauge is used inside the chamber and reads ambient chamber pressure. Accuracy is maintained for both increasing and decreasing pressures and always indicates true gauge pressure and/or a simulated depth in a chamber. Caisson Gauges come standard with calibration certificates and cleaned for oxygen service.



Hand Operated Pressure Calibration Pumps

SEE BELOW

Applications are remote field pressure calibrations process pressure gauges, setting pressure switches, transmitters and other equipment requiring a stable pressure calibration source.

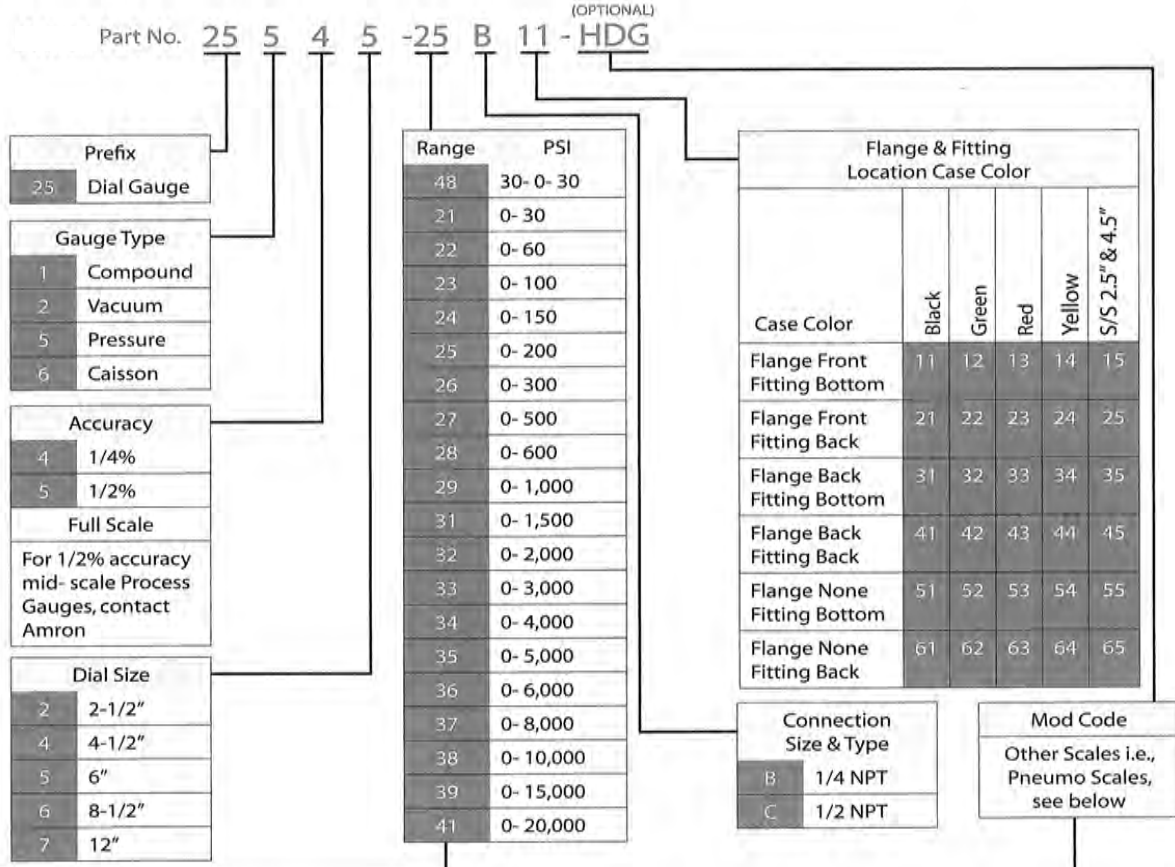
Part No.	Description
8110-300	Pneumatic Model w/vernier, 0- 300 psi
8112-3000	Hydraulic Hand pump, 0- 3000 psi
8111-300	Duplex Hand pump w/vernier 25"/hg- 0- 300 psi

USA
ROVSCO, Inc.
 5263 Barker Cypress Road, Suite 600
 Houston, Texas 77084, USA
 T: +1 281 858 6333
 E: sales@rovSCO.com • www.rovSCO.com



Singapore
ROVSCO ASIA Pte Ltd
 11 Changi South Street No.1, #01-03
 Singapore 486787
 T: (+65) 6546 6526
 E: sales@rovSCOasia.com • www.rovSCO.com

3D Instrument Gauges



Pneumo Gauge Mod Codes

DUAL SCALE PSI and Feet of Seawater					
Mod Code	Range No.	PSI	Div.	FSW	Div.
HBC	22	60	.2 PSI	140	.4 ft.
HBD	23	100	.5 PSI	230	1 ft.
HBF	24	150	.5 PSI	350	2 ft.
HCC	25	200	2 PSI	450	1 ft.
HBG	25	200	2 PSI	450	2 ft.
HBH	26	300	1 PSI	700	2 ft.
HCA	27	500	2 PSI	1100	2 ft.
HCF	28	600	2 PSI	1400	2 ft.
HBK	28	600	2 PSI	1400	4 ft.
HCB	28	750	2 PSI	1700	2 ft.
HBL	28	750	2 PSI	1700	4 ft.
HBM	29	1000	5 PSI	2300	10 ft.
HCI	31	1500	5 PSI	3500	10 ft.

SINGLE SCALE Feet of Seawater Only			
Mod Code	Range No.	FSW	Div.
CDB	21	70	.2 ft.
CBC	22	140	.4 ft.
CBD	23	230	1 ft.
CBE	23	250	1 ft.
CCG	24	300	1 ft.
CBF	24	350	2 ft.
CCC	25	450	1 ft.
CBG	25	450	2 ft.
CCL	26	500	2 ft.
CBH	26	700	2 ft.
CCA	27	1100	2 ft.
CBJ	27	1200	2 ft.
CBK	28	1400	4 ft.
CCB	28	1700	2 ft.
CBL	29	1700	4 ft.
CBM	29	2300	10 ft.

DUAL SCALE Feet of Seawater / Meters of Seawater					
Mod Code	Range No.	FSW	Div.	MSW	Div.
HDW	21	70	.2 ft.	20	.1 mtr.
HDC	22	140	.4 ft.	40	.2 mtr.
HDD	23	230	1 ft.	70	.25 mtr.
HED	24	300	1 ft.	90	.5 mtr.
HDF	24	350	1 ft.	100	.5 mtr.
HDG	25	450	2 ft.	140	.5 mtr.
HDH	26	700	2 ft.	200	1 mtr.
HDJ	27	1200	2 ft.	360	1 mtr.
HDK	28	1400	4 ft.	400	2 mtr.
HEB	28	1700	2 ft.	520	1 mtr.
HDL	28	1700	4 ft.	520	2 mtr.
HDM	29	2300	10 ft.	700	2 mtr.

NOTE: Mod Code, if used, must correspond with Gauge Range.

EXAMPLE: Range 23 (100 psi): Valid Mod Codes are HBD, CBD, CBE or HDD

EXAMPLE: 25545- 25B11- HDG = "Pneumo Gauge" (Pressure Gauge) , 1/4% Accuracy, 6" Dial, 450 FSW & 140 MSW Scale, 1/4 NPT Connection, Front Flange, Bottom Connection.

USA
ROVSCO, Inc.
 5263 Barker Cypress Road, Suite 600
 Houston, Texas 77084, USA
 T: +1 281 858 6333
 E: sales@rovSCO.com • www.rovSCO.com



Singapore
ROVSCO ASIA Pte Ltd
 11 Changi South Street No.1, #01-03
 Singapore 486787
 T: (+65) 6546 6526
 E: sales@rovSCOasia.com • www.rovSCO.com

3D Instrument Gauges

Accu-Cal Plus Digital Test Gauge

Features

Intrinsically Safe	Battery Powered Accu-Cal is Certified by CSA with the following rating: Class 1, Div. 2, Groups A-D.
Precise Measurements	0.05% FS accuracy. Vacuum accuracy: 0.25% FS for ranges 0-500 psi and below
Temperature Compensation	Accuracy not de-rated over the temp. range of 32-122°F with rigorous 3 temperature calibration
Rugged enclosure	300 Series Stainless Steel case with NEMA-4 and IP65 waterproof rating
Security	Password protected "through the keypad" Zero and Calibration information
Analog/Digital Display	Large, backlit, 5 digit display with 0.65" high digits and complimentary 20 segment bar graph
Low Power consumption	2000 hours battery life at slow sample rate from three (3) size AA alkaline batteries; adjustable sample rates
Versatile	11 pressure ranges available. Displays to 21 standard or fully custom Engineering Units
Communication	RS-232 output of ASCII data (optional cable required)
Peak/Valley measurements - MIN/MAX	Function permits storage and retrieval of Min and MAX pressure values
Tare	Allows re-zeroing of the gauge anywhere across the span of the gauge
Options	24vdc power, mounting flanges, RS-232 output and chemical/sanitary seals

Part No. **75514 33 B 55 PNO**

Product Description	
75514	Accu-Cal Plus: 3 x AA battery powered
76514	Accu-Cal Plus: 24 VDC version (does not include a 24 VDC adapter) Refer below for part number information.

Pressure Ranges Codes (all ranges include vacuum measurement)	
15	-5-0-15 psig
21	-5-0-30 psig
23	-14.5-0-100 psig
26	-14.5-0-300 psig
27	-14.5-0-500 psig
29	-14.5-0-1,000 psig
32	-14.5-0-2,000 psig
33	-14.5-0-3,000 psig
35	-14.5-0-5,000 psig
38	-14-0-10,000 psig

Process connection	
B	¼" NPT male

Option Codes: leave blank if no options are required	
PNO	Accu-Cal Plus Cal Kit #1 includes an Accu-Cal Plus Digital Test Gauge, Model 8110-300: 0-300 psi Pneumatic Handpump, Hose Kit and Series-200 ABS waterproof case
PRO	Accu-Cal Plus Cal Kit #2 includes an Accu-Cal Plus Digital Test Gauge, Model 8111-300: Vac/0-300 psi Duplex Handpump, Hose Kit and Series-200 ABS waterproof case
PUO	Accu-Cal Plus Cal Kit #3 includes an Accu-Cal Plus Digital Test Gauge, Model 8112-3000: 0-3000 psi Hydraulic Handpump, Hose Kit and Series-200 ABS waterproof case
GCO1	10 Readings Downscale Only. Room Temperature Only.
GCO2	13 Readings Upscale and Downscale, Room Temperature Only
GCO3	13 Readings Upscale and Downscale, At Low, Room and High Temperatures.
RAA	Custom RS-232 cable - 3D Instruments Part Number: 2025-0004
	12-24 VDC (110 VAC version; 200 mA) - 3D Instruments Part Number: 2001-0091

Connection Position and Mounting Flange Codes:	
15	Flange front, bottom fitting
25	Flange front, back fitting
35	Flange back, bottom fitting
45	Flange back, back fitting
55*	Flange none, bottom fitting
65	Flange none, back fitting

* = Standard Configuration

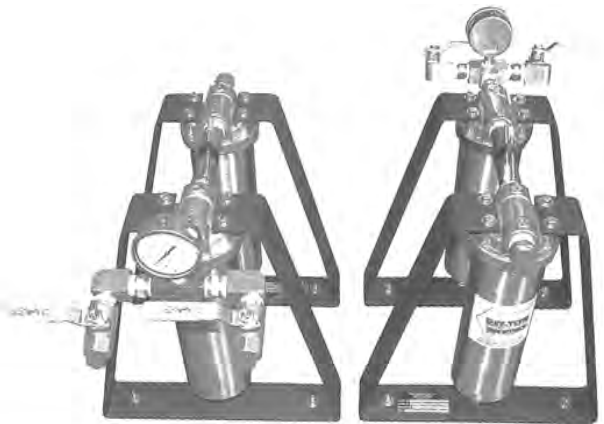
Example: **75514-33B55** Battery Powered Accu-Cal Plus with 300 series SS case, 3000 psig sensor, bottom ¼" NPT male fitting without mounting flange

USA
ROVSCO, Inc.
 5263 Barker Cypress Road, Suite 600
 Houston, Texas 77084, USA
 T: +1 281 858 6333
 E: sales@rovSCO.com • www.rovSCO.com



Singapore
ROVSCO ASIA Pte Ltd
 11 Changi South Street No.1, #01-03
 Singapore 486787
 T: (+65) 6546 6526
 E: sales@rovSCOasia.com • www.rovSCO.com

Filtration



Model FILTBT2-ASSY: Two-Stage Filtration System

Our Model BT2 filtration system is a dual canister assembly. The canister bowls are made of stainless steel with brass heads. Both canisters come with manual drains standard. Both filter elements are disposable after use. The first stage element is a coalescing filter and the second stage is a activated charcoal filter. The unit is supported by an aluminum frame with rubber feet.

Standard Unit Specifications

- One air inlet, #10 JIC
- Two air outlets, 1/2" ball valves
- Outlet Gauge
- 0-300 Stainless Steel Housing
- Brass Plumbing
- Stainless Steel Hardware
- Approximate Weight: 20 LBS
- Dimensions: Length: 21"
Width: 13.25"
Height: 18.5"

Element Specifications

- First Stage: FILT-RWS-5**
- Particulate (5 micron)
- Second Stage: FLIT-MS97AC**
- Charcoal



Model FILTBT3-ASSY: Three-Stage Filtration System

Our Model BT3 filtration system consists of three canister assemblies. The canisters are made of powder-coated die cast aluminum with 1" flow ports. The first and second stage canisters are fitted with auto drains and the third has a manual drain. The unit is plumbed with heavy-duty brass

fittings, stainless steel hardware, and stainless steel gauges. The assembly is supported by an aluminum frame. The unit comes complete and ready to use with #10 JIC male fittings on the inlet and outlet valves.

Standard Unit Specifications

- Two Inlets
- Two Outlets
- 3/4" Brass Ball Valves
- Inlet/Outlet Gauges - 0-300 Stainless Steel Housing
- #10 JIC Male Hose Adapters
- Brass Plumbing
- Stainless Steel Hardware
- Approximate Weight: 32 LBS
- Dimensions: Length: 30"
Width: 12"
Height: 16"

Element Specifications

- First Stage: 5311-01**
- Particulate (1 micron)
*Optional: ELEM-5311-01
5 micron coarse bronze filter*
- Second Stage: 5351-03**
- Oil Removal
- Third Stage: 665-70**
- Vapor and Odor



Filtration

NEW!

Two Stage Filter (1st)

First Stage Housing: HOUS-HS-RHB-786

Filter housing, 1st stage, with drain

Requires: FILT-RWS-5

Filter element, coalescing, water and particulate removal



Two Stage Filter (2nd)

Second Stage Housing: HOUS-HS-RHB-786

Filter housing, 2nd stage, with drain

Requires: FILT-MS97AC

Filter element, coalescing, water and particulate removal

FILT-RWS-5

Filter element, coalescing, water and particulate removal

FILT-MS97AC

Filter element, charcoal, water vapor and odor removal



Three Stage Filter (1st)

First Stage: FILT-F17-800-A1-DA

Filter assembly, Norgren, complete with filter and auto-drain.

Includes: ELEM-5311-01

Filter element, 1 micron, fine bronze

Optional: ELEM-5311-03

Filter element, 5 micron, coarse bronze

Three Stage Filter (2nd)

Second Stage: FILT-F46-800-AO-MA

Filter assembly, Norgren, complete with filter and auto-drain.

Includes: ELEM-5351-03

Filter element, oil removal, green foam

Three Stage Filter (3rd)

Third Stage: FILT-F46-827-MA-MA

Filter assembly, Norgren, complete with filter and manual drain

Includes: ELEM-665-70

Filter element, charcoal (water vapor and odor removal)

ELEM-5311-01

1 Micron, fine bronze filter element

ELEM-5351-03

Filter element, oil removal, green foam

ELEM-665-70

Filter element, charcoal (water vapor and odor removal)

USA

ROVSCO, Inc.

5263 Barker Cypress Road, Suite 600

Houston, Texas 77084, USA

T: +1 281 858 6333

E: sales@rovSCO.com • www.rovSCO.com



ROVSCO
INNOVATIVE DEEP OCEAN TECHNOLOGIES

Singapore

ROVSCO ASIA Pte Ltd

11 Changi South Street No.1, #01-03

Singapore 486787

T: (+65) 6546 6526

E: sales@rovSCOasia.com • www.rovSCO.com

HIGH PRESSURE AIR RECEIVER TANKS



Capacity (Gallons)	Size	PSI	Description	Part Number	Weight Lbs.
10	10x30	200	Tank with Legs only	786-302460	32
10	10x30	200	Tank with legs and top plate	786-302461	43
10	10x30	300	Tank with legs and top plate	786-302462	46
15	12x33	200	Tank with Legs only	786-302463	51
15	12x33	200	Tank with Legs and Top Plate	786-302464	60
15	12x33	300	Tank with Legs and Top Plate	786-302465	66
20	14x33	200	Tank with Legs only	786-302466	67
20	14x33	200	Tank with Legs and Top Plate	786-302467	79
20	14x33	300	Tank with Legs and Top Plate	786-302468	95
30	16x38	200	Tank with Legs only	786-302469	89
30	16x38	200	Tank with Legs and Top Plate	786-302470	111
30	16x38	300	Tank with Legs and Top Plate	786-302471	140
60	20x48	200	Tank with Legs only	786-302473	170
60	20x48	200	Tank with Legs and Top Plate	786-302474	204
60	20x48	300	Tank with Legs and Top Plate	786-302475	225
80	20x63	200	Tank with Legs only	786-302476	214
80	20x63	200	Tank with Legs and Top Plate	786-302477	263
80	20x63	300	Tank with Legs and Top Plate	786-302478	350
120	24x67	200	Tank with Legs only	786-302479	311
120	24x67	200	Tank with Legs and Top Plate	786-302480	382
200	30x72	200	Tank with Legs only	786-302482	538
200	30x72	200	Tank with Legs and Top Plate	786-302483	632
240	30x84	200	Tank with Legs only	786-302484	618
240	30x84	200	Tank with Legs and Top Plate	786-302485	716

USA
ROVSCO, Inc.
 5263 Barker Cypress Road, Suite 600
 Houston, Texas 77084, USA
 T: +1 281 858 6333
 E: sales@rovSCO.com • www.rovSCO.com



Singapore
ROVSCO ASIA Pte Ltd
 11 Changi South Street No.1, #01-03
 Singapore 486787
 T: (+65) 6546 6526
 E: sales@rovSCOasia.com • www.rovSCO.com

Air Analysis



Nuvair Pro O2 Analyzer

PROO2
 Extremely accurate and stable. Used by commercial, military and recreational divers.
 Sensor: SENS-9505



Oxycheq Expedition Analyzer

EXP-PP02
 Partial Pressure O2 analyzer that is low cost and durable. Can be used in hyperbaric environments.
 Sensor: SENS-OSR-6



MSA Mini-Ox

MINI-O2DII
 For spot-checking or continuous monitoring, MSA's Mini-Ox sensor is one of the most well known models in the world today.
 Sensor: SENS406931



Analog Series

- Series 1000 - Oxygen Analyzer
- Series 3000 - Toxic Gas
- Series 4000 - Temperature Analyzer
- Series 5001 - Carbon Dioxide Analyzer
- Series 6000 - Depth Analyzer
- Series 7000 - Humidity Analyzer
- Series 8000 - Helium Analyzer
- Series 9000 - Nitrogen Analyzer

Analog Analyzers

Analog Analyzers are the top of the line in gas detection. They give accurate and reliable readings of diving gasses, their unique O2 and CO2 sensors are fully temperature compensated. They have easy read displays and offer a full analysis range of diving gasses, including He and N2. The Analog series offers audio and visual alarms to meet today's requirements.

The benefits of having an Analog analyzer are minimum user downtime, they are user friendly, they also use common fittings for quick assembly and offer a battery back-up.



USA
ROVSCO, Inc.
 5263 Barker Cypress Road, Suite 600
 Houston, Texas 77084, USA
 T: +1 281 858 6333
 E: sales@rovSCO.com • www.rovSCO.com

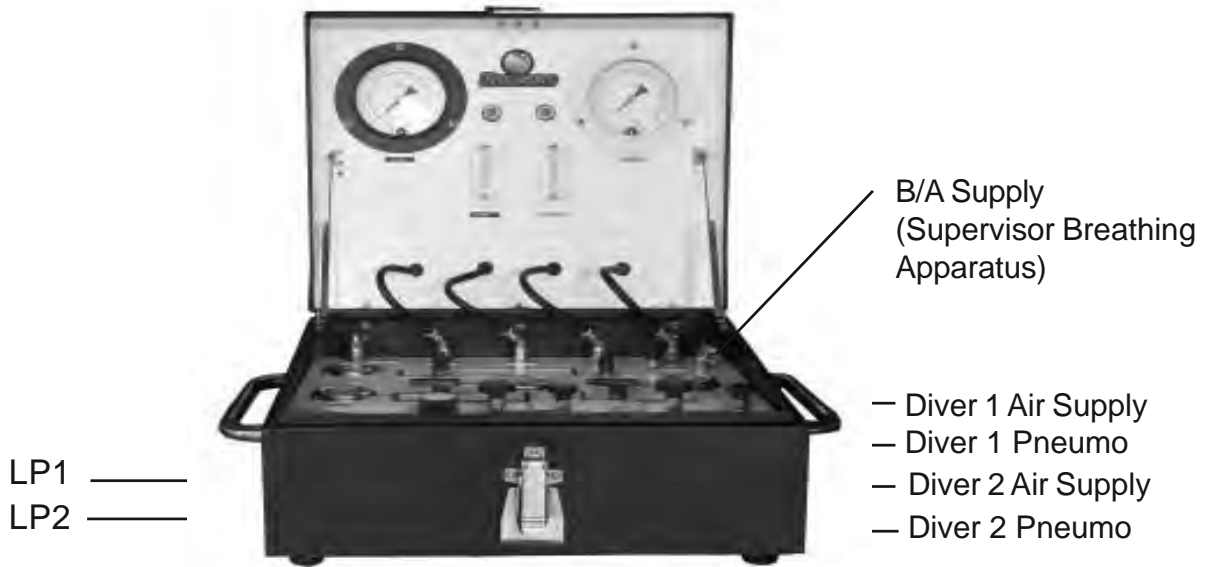


Singapore
ROVSCO ASIA Pte Ltd
 11 Changi South Street No.1, #01-03
 Singapore 486787
 T: (+65) 6546 6526
 E: sales@rovSCOasia.com • www.rovSCO.com

RENTAL AVAILABLE'

2-Divers Low Pressure (LP) Air Control & Depth Monitoring Unit IMCA compliant

Manufactured with very high quality components, this portable Unit allows to supply air to 2 divers while keeping their depth under control. The unit includes LP air control and monitoring, with flowmeters for each diver. The unit comes in a water tight and rugged powder coated aluminum case designed for offshore use.



Rubber Sealing gasket to make it water tight



USA
ROVSCO, Inc.
 5263 Barker Cypress Road, Suite 600
 Houston, Texas 77084, USA
 T: +1 281 858 6333
 E: sales@rovSCO.com • www.rovSCO.com



Singapore
ROVSCO ASIA Pte Ltd
 11 Changi South Street No.1, #01-03
 Singapore 486787
 T: (+65) 6546 6526
 E: sales@rovSCOasia.com • www.rovSCO.com

STANDARD AIR DIVE PANEL FOR 3 DIVERS WITH DEPTH MONITORING IMCA COMPLIANT

Our Air Control Panels are handcrafted one at a time and held to the highest standards in parts and workmanship. Pneumo Line, Diver Supply Line, Sample Line and breathing apparatus are installed in a water-tight box. The box is fabricated from marine grade Aluminum, exterior is black anodized with 25 micron thick anodizing. Inside Panels are finished with outdoor grade white powder coating.

The 3 LP Lines come from an Air Bank or an SRP which is installed with Tescom Regulators. It has Sample Line for each of the 3 divers. Each of the LP1, LP2, and LP3 go straight to individual divers, 1, 2, and 3 respectively. In case LP1 has any problem, LP2 or LP3 can be opened for Diver1. This process of back up is also available for Diver2 and Diver3 to protect them in case of an emergency. Therefore LP1, LP2, and LP3 work as back up for each other.



USA
ROVSCO, Inc.
 5263 Barker Cypress Road, Suite 600
 Houston, Texas 77084, USA
 T: +1 281 858 6333
 E: sales@rovSCO.com • www.rovSCO.com

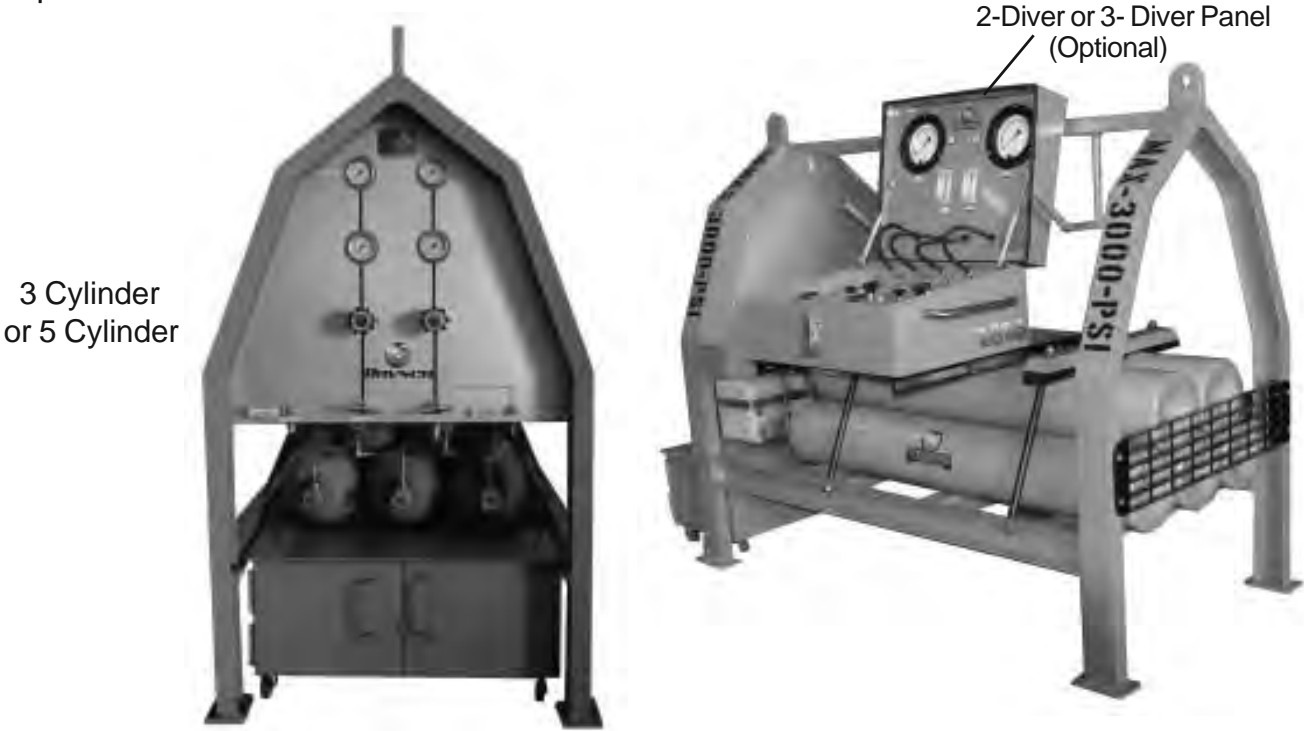


Singapore
ROVSCO ASIA Pte Ltd
 11 Changi South Street No.1, #01-03
 Singapore 486787
 T: (+65) 6546 6526
 E: sales@rovSCOasia.com • www.rovSCO.com

Rovsco Scuba Replacement (SRP)

RENTAL AVAILABLE'

Rovsco manufactures a range of Scuba Replacements (SRP) for 2 divers or 3 divers. All units are manufactured with very high quality components and fully tested to ensure correct and reliable operation.



Size: 978 mm (W) x 1854 mm (L) x 1657 mm (H)

- ◆ 3 Cylinders, 5 Cylinders, or 6 Cylinders, (Cylinders are rated at 300 bar)
- ◆ Our cylinders are light weight and powder coated with colors from Industrial color chart.
- ◆ Tescom Regulators for pressure control
- ◆ SS Wika Pressure Gauges
- ◆ Hard Anodized Operating Panel
- ◆ Rugged Frame with lift eyes, powder coated to withstand extreme environment
- ◆ Securely holds Diver Control Panel
- ◆ Rack for dive umbilical
- ◆ Cabinet to store Helmets
- ◆ Two Umbilical Hangers

USA
ROVSCO, Inc.
 5263 Barker Cypress Road, Suite 600
 Houston, Texas 77084, USA
 T: +1 281 858 6333
 E: sales@rovSCO.com • www.rovSCO.com



Singapore
ROVSCO ASIA Pte Ltd
 11 Changi South Street No.1, #01-03
 Singapore 486787
 T: (+65) 6546 6526
 E: sales@rovSCOasia.com • www.rovSCO.com

Umbilicals, Twisted



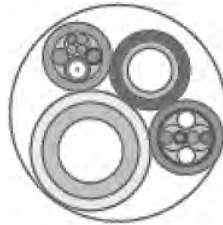
Diveline brand umbilicals incorporating Aquaflow, Texflow and Flexflow hoses allow the professional diver to be safer and more productive by making life easier, underwater and on deck. The unique materials and cabled "rope-like" construction combine to produce the most flexible, controlled buoyancy umbilicals available today.

With no need for tape, much reduced repairs, and longer life, Diveline umbilicals not only improve diver efficiency they actually reduce costs for the operator. Along with diving hoses and life support umbilicals of all types Umbilicals International (UI) offers a full range of underwater cables for all your project needs. See our cable data sheet for standard designs or contact us for custom requirements.



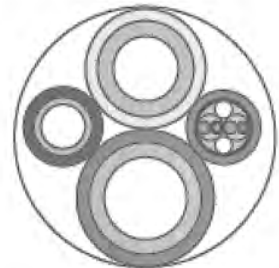
UDA0103

3/8" Aquaflow Hose
1/4" Aquaflow Pneumo Hose
Comm Wire/Life Line



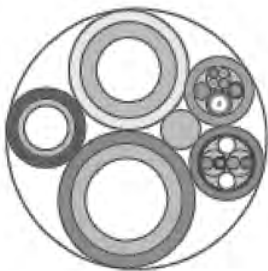
UDA0204

3/8" Aquaflow Hose
1/4" Aquaflow Pneumo Hose
Comm Wire/Life Line
Video Cable



UDA0104

1/2" Hot Water Hose
3/8" Aquaflow Hose
1/4" Aquaflow Pneumo Hose
Comm Wire/Life Line



UDF0105

1/2" Hot Water Hose
3/8" Aquaflow Hose
1/4" Aquaflow Pneumo Hose
Comm Wire/Life Line
Video Cable



UDT0108

1/2" Hot Water Hose
1/2" Reclaim Hose
3/8" Aquaflow Hose
1/4" Aquaflow Pneumo Hose
1/4" Hat Light Cable
Comm Wire/Life Line
Video Cable
Hat Light Cable

Custom Umbilicals Available.

USA
ROVSCO, Inc.
5263 Barker Cypress Road, Suite 600
Houston, Texas 77084, USA
T: +1 281 858 6333
E: sales@rovSCO.com • www.rovSCO.com



Singapore
ROVSCO ASIA Pte Ltd
11 Changi South Street No.1, #01-03
Singapore 486787
T: (+65) 6546 6526
E: sales@rovSCOasia.com • www.rovSCO.com

Rovsco hydraulically driven Hose Reel

Model ROVSCO-200DHW

Hydraulically Driven Hose Reel for providing hydraulic Power to Diver held subsea Tools

Features:

- All Welded A36 Steel with Stainless Steel Hardware
- System is blasted to near white metal and painted with Three-Coat epoxy system, Zinc Primer, Tiecoat, Top Coat of Epoxy paint.
- Hydraulic motor driving chain and sprockets
- Sealed Self-Aligning Ball Bearings
- Load Tested 4 Point Lift Eyes



Built to survive the harsh Subsea Diving environment, the Rovsco motor driven Hydraulic Hose Reel has been designed to be rugged whilst providing the ease of operation for delivering hydraulic power to the diver held subsea tools. The Reel is made from A36 steel with all welded construction. The Reel is blasted to near white metal and coated with three coat epoxy system, Zinc Primer, Tiecoat, and Top coat of Epoxy paint. All hardware used is stainless steel. The system uses high quality sealed self-aligning ball bearings. 4-Point Load Tested Lift Eyes are provided for ease of handling.

OPTIONS:

- Made from Marine Grade Aluminum
- Made from Stainless Steel
- Electric Driven
- Manually operated

USA

ROVSCO, Inc.

5263 Barker Cypress Road, Suite 600

Houston, Texas 77084, USA

T: +1 281 858 6333

E: sales@rovsco.com • www.rovsco.com



Singapore

ROVSCO ASIA Pte Ltd

11 Changi South Street No.1, #01-03

Singapore 486787

T: (+65) 6546 6526

E: sales@rovscoasia.com • www.rovsco.com

Radios and Communication



Amcom™ I

The Amcom I is a compact one diver that is powerful enough for two divers.

- Part Number: 2810A-1**
Radio with standard battery
- Part Number: 2810A**
Radio with rechargeable battery



Amcom™ II 2820A Standard

The Amcom II 2820 series is the standard two diver radio Amron offers. This series includes hand-held push to talk microphone.

- Part Number: 2820A**
Standard radio
- Part Number: 2820A/23**
2820 with rechargeable battery
- Part Number: 2820A/24**
2820A AC powered



Amcom™ II 2825 Diver Deluxe

The Amcom II Diver Deluxe (2825) includes hand-held push to talk microphones and separate volume controls for each diver.

- Part Number: 2825A**
2 Diver deluxe standard
- Part Number: 2825A/23**
2825A with rechargeable battery
- Part Number: 2825A/24**
2825A AC powered



Amcom™ II 2825 Unscrambler

The Amcom II Helium Unscrambler is one of the most popular radios for deep gas diving. This series includes hand-held push-to-talk microphone and helium speech unscrambler.

- Part Number: 2825/24/26**
2825A with helium unscrambler
- Part Number: 2825/24/26-DSP**
2825A with helium unscrambler



Amcom™ II 2825 Wireless Tender

The Amcom II Wireless Tender (2825) is a great option when the tender has to move around the deck checking equipment while keeping in communication with the diver. This series includes hand-held push-to-talk microphone and the wireless tender option.

- Part Number: 2825/24/28FDW**
2825A with wireless tender option



Amcom™ III Three Diver Radio

The Amcom III (2830) is the most versatile and powerful three diver communication system on the market today.

- Part Number: 2830A/24**
2830A, AC powered
- Part Number: 2830A/24/28FDW**
2830A with wireless tender, standard
- Part Number: 2830A/24/26**
2830A with helium unscrambler
- Part Number: 2830A/24/26-DSP**
2830A with helium unscrambler

USA
ROVSCO, Inc.
 5263 Barker Cypress Road, Suite 600
 Houston, Texas 77084, USA
 T: +1 281 858 6333
 E: sales@rovSCO.com • www.rovSCO.com



Singapore
ROVSCO ASIA Pte Ltd
 11 Changi South Street No.1, #01-03
 Singapore 486787
 T: (+65) 6546 6526
 E: sales@rovSCOasia.com • www.rovSCO.com

LP Compressor

Model 786-5120D

**RENTAL
AVAILABLE**



This LP compressor features a Quincy 5120 two stage, 4 cycle pressure lubricated compressor with diesel engine. This LP compressor is designed for heavy duty continuous service in commercial diving operations. This unit meets or exceeds all existing government and industry standards. The unit is designed and built by personnel with more than 30 years of commercial diving equipment manufacturing experience. The unit is easy to maintain and comes with a reliable Diesel engine. It delivers 200 PSI @ 88.5 cu/ft of free air. The skid is fabricated with 3" tubular steel frame, with forklift slots, drip pan, and 4-point lifting eyes.

Standard Specifications

200 PSI at 88.5 cu/ft. of free air
4-Diver Manifold
20 Gallon Fuel Tank
60 Gallon ASME, 200 PSI WP, Air Receiver
Temperature Gauge
Oil Pressure Gauge
Check Valve
Relief Valve
3" Tubular Steel Frame
Belt Guard

Diesel Engine: Lister TR3, Kubota, or Dietz
Air Start

Compressor: Quincy 5120

Options:
Electric Start
Larger fuel tank
Electric Motor operated

USA
ROVSCO, Inc.
5263 Barker Cypress Road, Suite 600
Houston, Texas 77084, USA
T: +1 281 858 6333
E: sales@rovSCO.com • www.rovSCO.com



Singapore
ROVSCO ASIA Pte Ltd
11 Changi South Street No.1, #01-03
Singapore 486787
T: (+65) 6546 6526
E: sales@rovSCOasia.com • www.rovSCO.com

Bauer HP Electric Compressor

RENTAL AVAILABLE'

**Divemate DMT06-E3
Offshore Frame Mounted**

**6.0 SCFM (170 Liter / min)
Pressures upto 6000 Psi (414 Bar)**

Automatic Condensate Drain



DIVEMATE is Bauer Compressor's new line of horizontally framed compressor systems. The compact rugged horizontal frame allows for portability and space saving permanent installation. Complete with air purification DIVEMATE is a safe and reliable breathing air compressor designed for commercial diving operations.

USA
ROVSCO, Inc.
 5263 Barker Cypress Road, Suite 600
 Houston, Texas 77084, USA
 T: +1 281 858 6333
 E: sales@rovSCO.com • www.rovSCO.com

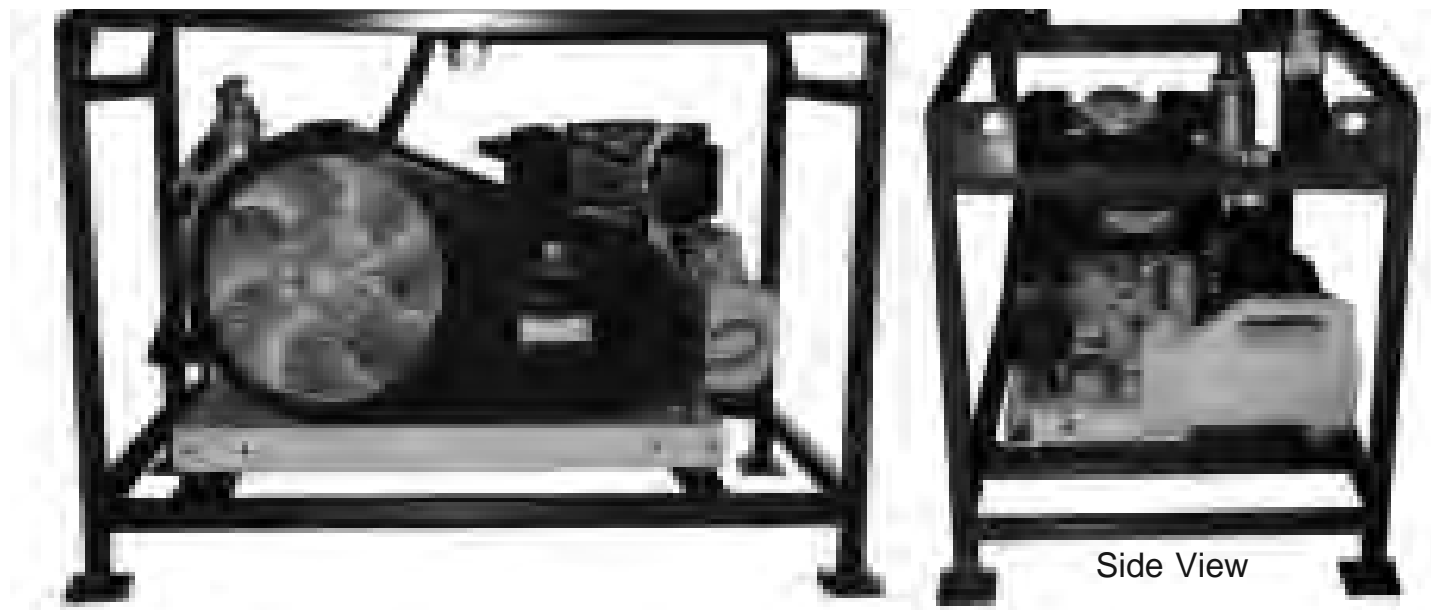


Singapore
ROVSCO ASIA Pte Ltd
 11 Changi South Street No.1, #01-03
 Singapore 486787
 T: (+65) 6546 6526
 E: sales@rovSCOasia.com • www.rovSCO.com

Bauer HP Diesel Compressor

Divemate DMT08-DY Offshore Frame Mounted

**8.4 SCFM (238 Liter / min)
upto 6000 psig (414 Bar)
Automatic Condensate Drain
P41 Purification**



DIVEMATE is Bauer Compressor's new line of horizontally framed compressor systems. The compact rugged horizontal frame allows for portability and space saving permanent installation. Complete with air purification DIVEMATE is a safe and reliable breathing air compressor designed for commercial diving operations.

USA
ROVSCO, Inc.
5263 Barker Cypress Road, Suite 600
Houston, Texas 77084, USA
T: +1 281 858 6333
E: sales@rovSCO.com • www.rovSCO.com



Singapore
ROVSCO ASIA Pte Ltd
11 Changi South Street No.1, #01-03
Singapore 486787
T: (+65) 6546 6526
E: sales@rovSCOasia.com • www.rovSCO.com

RENTAL AVAILABLE'

Rovsco Haskel Pump Gas Transfer Unit



For Transfer and Pressurization of Helium Gas or Breathing Air. These units are noted for their cleanliness and can handle pure gases without risk of any contamination.

USA
ROVSCO, Inc.
 5263 Barker Cypress Road, Suite 600
 Houston, Texas 77084, USA
 T: +1 281 858 6333
 E: sales@rovsco.com • www.rovsco.com



Singapore
ROVSCO ASIA Pte Ltd
 11 Changi South Street No.1, #01-03
 Singapore 486787
 T: (+65) 6546 6526
 E: sales@rovscoasia.com • www.rovsco.com

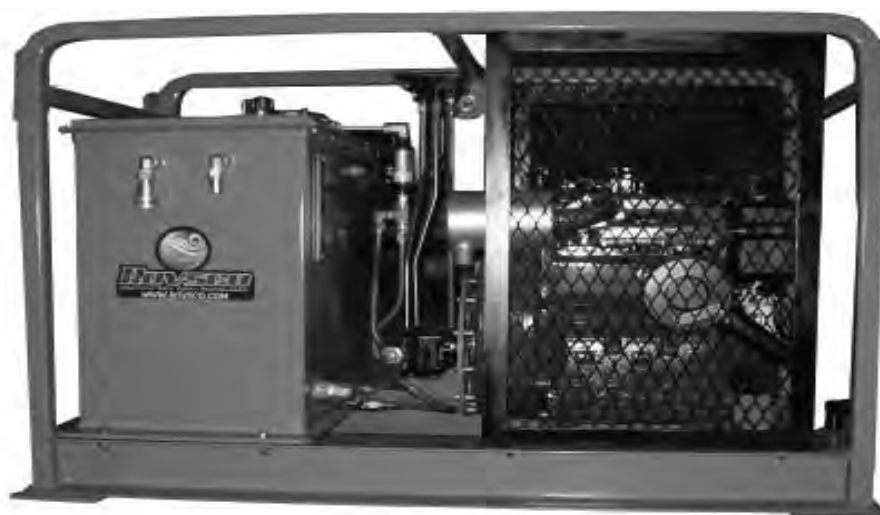
RENTAL AVAILABLE'

Rovsco Diesel Engine Hydraulic Power Pack (HPU)

15 GPM, 3000 Psi, Lister Petter TR3A01 Engine

62 Gallon Reservoir

Offshore Steel Frame with Lifting Eyes



Rovsco (Diesel) Hydraulic Power Pack is driven by a Lister Petter TR3 air cooled engine. It is a rugged offshore frame mounted diesel power pack designed to provide hydraulic fluid power for operating a variety of tools and equipment. The unit comes standard with 62 gallon reservoir, steel tubular frame/skid with lifting eyes. It has adjustable flow control with built-in relief valve and flow meter.

USA**ROVSCO, Inc.**

5263 Barker Cypress Road, Suite 600

Houston, Texas 77084, USA

T: +1 281 858 6333

E: sales@rovSCO.com • www.rovSCO.com**Singapore****ROVSCO ASIA Pte Ltd**

11 Changi South Street No.1, #01-03

Singapore 486787

T: (+65) 6546 6526

E: sales@rovSCOasia.com • www.rovSCO.com

RENTAL AVAILABLE'

Rovsco Electric Hydraulic Power Pack (HPU)

15 GPM, 2200 Psi, 30 HP Electric Motor

62 Gallon Reservoir

Offshore Frame with Lifting Eyes



Rovsco Electric Hydraulic Power Unit is driven by a 30 HP electric motor. It is a rugged offshore frame mounted hydraulic power package designed for providing hydraulic fluid power for operating a variety of tools and equipment. The unit comes standard with 62 gallon reservoir, steel tubular skid with lifting eyes. It has an adjustable flow control with built-in relief valve and flow meter.

USA**ROVSCO, Inc.**

5263 Barker Cypress Road, Suite 600

Houston, Texas 77084, USA

T: +1 281 858 6333

E: sales@rovsco.com • www.rovsco.com

**Singapore****ROVSCO ASIA Pte Ltd**

11 Changi South Street No.1, #01-03

Singapore 486787

T: (+65) 6546 6526

E: sales@rovscoasia.com • www.rovsco.com

Hydraulic Tools

RENTAL AVAILABLE



Chain Saw - CS11



Diamond Saw - DS11

Model	Steel Capacity	Weight	Inlet Flow Range	Inlet Pressure	Optimum Flow	Connector
BR45	1 x 4.5" Hex	45 lbs	7-9 gpm	1500 -2000 psi	8 gpm	3/8" MPT
BR67	1.125 x 6" Hex	67 lbs	7-9 gpm	1500 -2000 psi	8 gpm	3/8" MPT
BR87	1.125 x 6" Hex	80 lbs	7-9 gpm	1500 -2000 psi	8 gpm	3/8" MPT
CH15	2.5" x 6" Shank	24 lbs	7-9 gpm	1500 -2000 psi	8 gpm	3/8" MPT
CO23	10" Wheel	23 lbs	10-15 gpm	1500 -2000 psi	15 gpm	1/2" MPT
CS06	15 & 20" Bar	6.25 lbs	7-9 gpm	1000-2000 psi	8 gpm	3/8" MPT
CS11	24, 30, 36 & 43" Bar	14 lbs	10-14 gpm	1500 -2000 psi	14 gpm	1/2" MPT
DL09	1/2" Chuck	10 lbs	10 gpm max	2000 psi max	N/A	3/8" MPT
DS11	12, 15, 18" Bar	26 lbs	12 gpm max	2000 psi max	N/A	3/8" MPT
GR29	9" Wheel	15 lbs	4-10 gpm	1000-2500 psi	10 gpm	3/8" MPT
HD45	2" Dia or 4" Core	45 lbs	7-9 gpm	1500 -2000 psi	8 gpm	3/8" MPT
ID04	1/2" Square Drive	7.7 lbs	4-12 gpm	750-2000 psi	4-9 gpm	3/8" MPT
IW12	3/4" Square Drive	16 lbs	4-12 gpm	1000-2000 psi	N/A	3/8" MPT
IW16	1" Square Drive	26 lbs	7-12 gpm	1500 -2000 psi	N/A	3/8" MPT
IW24	1 1/2" Square Drive	43 lbs	7-12 gpm	1800-2000 psi	N/A	3/8" MPT
SK58	4.25" Shank x 1" Hex	67 lbs	7-9 gpm	1500 -2000 psi	9 gpm	3/8" MPT



Sinker Drill - SK58



Hammer Drill - HD45



Chipping Hammer - CH15



Drill - DL09

USA
ROVSCO, Inc.
 5263 Barker Cypress Road, Suite 600
 Houston, Texas 77084, USA
 T: +1 281 858 6333
 E: sales@rovSCO.com • www.rovSCO.com



Singapore
ROVSCO ASIA Pte Ltd
 11 Changi South Street No.1, #01-03
 Singapore 486787
 T: (+65) 6546 6526
 E: sales@rovSCOasia.com • www.rovSCO.com

Hydraulic Tools

RENTAL AVAILABLE'



Impact Wrench - IW24



Impact Wrench - IW12



Impact Wrench - IW16



Grinder - GR29



Breaker - BR45



Cut Off Saw - CO23

Pumps

Model	Capacity	Weight	Inlet Pressure	Flow Range	Max. Flow	Connectors	Discharge Size
SM20	250 gpm	14 lbs	1000-2000 psi	4-9 gpm	9 gpm	3/8" MPT	2.5" FPT
SM21	300 gpm	20 lbs	1000-2000 psi	4-9 gpm	9 gpm	3/8" MPT	2.5" FPT
TP03	450 gpm	31 lbs	2000 psi	7-9 gpm	9 gpm	1/2" MPT	2.5" FPT
TP04	800 gpm	56 lbs	1500-2000 psi	12-16 gpm	16 gpm	3/4" FPT	2.5" MPT
TP08	800 gpm	59 lbs	2000 psi	7-9 gpm	9 gpm	1/2" MPT	4" Camlock

USA
ROVSCO, Inc.
 5263 Barker Cypress Road, Suite 600
 Houston, Texas 77084, USA
 T: +1 281 858 6333
 E: sales@rovSCO.com • www.rovSCO.com



Singapore
ROVSCO ASIA Pte Ltd
 11 Changi South Street No.1, #01-03
 Singapore 486787
 T: (+65) 6546 6526
 E: sales@rovSCOasia.com • www.rovSCO.com

Hydraulic Submersible Pumps



SM-20 Dewatering Pump

SM-20

- 2.5" Outlet
- 250 GPM Output



SM-21 Dewatering Pump

SM-20

- 2.5" Outlet
- 300 GPM Output



SM-50 Dewatering Pump

SM-20

- 3" Outlet
- 500 GPM Output



TP-03 Trash Pump

TP-03

- 3" Outlet
- 450 GPM Output
- Can handle up to 3" solid material



TP-08 Trash Pump

TP-08

- 4" Outlet
- 800 GPM Output
- Can handle up to 3" solid material

USA
ROVSCO, Inc.
 5263 Barker Cypress Road, Suite 600
 Houston, Texas 77084, USA
 T: +1 281 858 6333
 E: sales@rovSCO.com • www.rovSCO.com



Singapore
ROVSCO ASIA Pte Ltd
 11 Changi South Street No.1, #01-03
 Singapore 486787
 T: (+65) 6546 6526
 E: sales@rovSCOasia.com • www.rovSCO.com

Hydraulic Tools and Accessories

Swirl-Off Tool: BARN-50600



Swirl-Off / Barnacle Buster

The Barnacle Buster is designed to be used to remove heavy thick buildup of mussels, barnacles or other encrustation from steel, concrete, pilings, seawalls, bulkheads and ships.

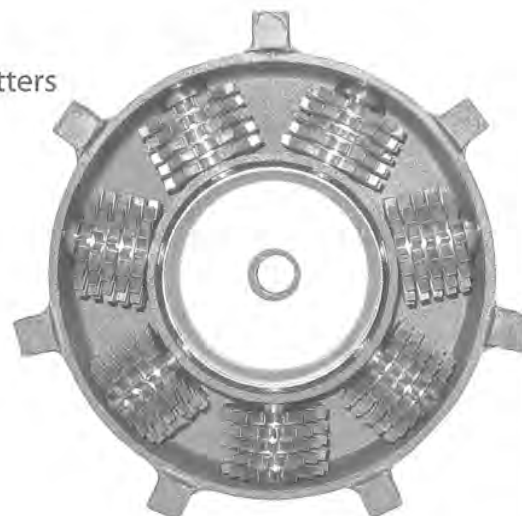
It is furnished with a one piece stainless steel housing and attached steel knockers. The standard unit comes with plated hardened steel cutters. It is also available with a heavy duty quick change assembly. Unit comes with a 5/8" - 11 threaded center hole (14mm available) which attaches to standard pneumatic or hydraulic powered tools. 1,000 to 2,000 RPM is suggested for underwater use.

As the tool moves across the surface, the outside knocker bars shatter barnacles and other heavy growth. The rotating hardened steel cutters follow up with a chipping and scraping action which removes the remaining material, leaving a clean surface. Water passing through the tool keeps the cutting wheels clean. The tool is ecologically safe since it adds no harmful chemicals to the environment. Rotary action displaces water creating a vacuum under the tool. This results in Barnacle Buster being pressed and held against the ship or work surface. Slight pressure on either side of the tool allows the operator to guide it in any direction.

Swirl-Off / Barnacle Buster Accessories

- 50611 Cutters (Set of 49) Std. Unit
- 50683 Spacers (Set of 49) Std. Unit
- 50630 Complete 6" Unit, Heavy Duty Quick Change
- 50631 Heavy Duty Quick Change Cutter Assembly.
- 50670 Complete 6" Unit with 8 Pointed Tungsten Carbide Cutters
- 50671 Tungsten Carbide Tipped 8 Tooth Cutter Set (21)
- 50684 Axles (Set of 7) fits all 6" Units
- 50685 Inner Retaining Cup, Locks Axles in Place
- 50686 5/8" - 11 Nut

Barnacle Buster: BARN-50810



DESMOND®

USA
ROVSCO, Inc.
 5263 Barker Cypress Road, Suite 600
 Houston, Texas 77084, USA
 T: +1 281 858 6333
 E: sales@rovSCO.com • www.rovSCO.com



Singapore
ROVSCO ASIA Pte Ltd
 11 Changi South Street No.1, #01-03
 Singapore 486787
 T: (+65) 6546 6526
 E: sales@rovSCOasia.com • www.rovSCO.com

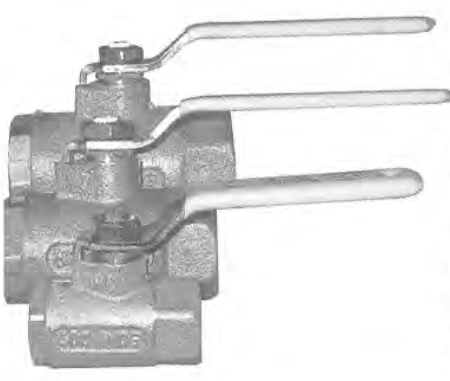
Valves

Needle Valves

Size	In	Out	Pressure Rating	Special	Part Number
1/4"	O2	1/4" MPT	250 PSI	-	VALV-W-207
1/4"	1/4" MPT	1/4" MPT	3000 PSI	-	VALV-W-211
1/4"	1/4" FPT	1/4" MPT	3000 PSI	-	VALV-W-217
1/4"	1/4" FPT	1/4" FPT	3000 PSI	-	VALV-HO-3812F4B
1/4" Tube	1/4" Tube	1/4" Tube	600 PSI	-	VALV-HO-D3712G4B
1/4" Tube	1/4" Tube	1/4" Tube	3000 PSI	-	VALV-B-1US4



Ball Valves



Size	In	Out	Pressure Rating	Special	Part Number
1/4"	1/4" FPT	1/4" FPT	600 PSI	-	VALV-70-101-10
3/8"	3/8" FPT	3/8" FPT	600 PSI	-	VALV-70-102-10
1/2"	1/2" FPT	1/2" FPT	600 PSI	-	VALV-70-103-10
3/4"	3/4" FPT	3/4" FPT	600 PSI	-	VALV-70-104-10
1"	1" FPT	1" FPT	600 PSI	-	VALV-70-105-10
1 1/4"	1 1/4" FPT	1 1/4" FPT	600 PSI	-	VALV-70-106-10
1 1/2"	1 1/2" FPT	1 1/2" FPT	600 PSI	-	VALV-70-107-10
2"	2" FPT	2" FPT	600 PSI	-	VALV-70-108-10
1/4"	1/4" FPT	1/4" FPT	3000 PSI	-	VALV-HO-7115F4B
1/4" Tube	1/4" Tube	1/4" Tube	2500 PSI	-	VALV-B-42S4
1/2" Tube	1/2" Tube	1/2" Tube	1500 PSI	-	VALV-B-45S8

Check Valves

Size	In	Out	Pressure Rating	Special	Part Number
1/4"	1/4" FPT	1/4" FPT	400 PSI	Ball/Cone	VALV-61-101-01
1/2"	1/2" FPT	1/2" FPT	400 PSI	Ball/Cone	VALV-61-103-01
3/4"	3/4" FPT	3/4" FPT	400 PSI	Ball/Cone	VALV-61-104-01
1"	1" FPT	1" FPT	400 PSI	Ball/Cone	VALV-105-01
1 1/2"	1 1/2" FPT	1 1/2" FPT	250 PSI	-	VALV-205-8
1/4"	1/4" FPT	1/4" FPT	3000 PSI	High Pressure	VALV-HO-6113F4B
1/2"	1/2" FPT	1/2" FPT	800 PSI	High Pressure	VALV-CS-2259B4-MM
1/2"	1/2" FPT	1/2" FPT	3000 PSI	High Pressure	VALV-CS-249B-4PP



Relief Valves



Size	Pressure Rating	Special	Part Number
1/4" MPT	100 PSI	-	VALV-112CSS-2-100
1/4" MPT	175 PSI	-	VALV-112CSS-2-175
1/4" MPT	200 PSI	-	VALV-112CSS-2-200
1/4" MPT	225 PSI	-	VALV-112CSS-2-225
1/4" MPT	250 PSI	-	VALV-112CSS-2-250
3/4" MPT	135 PSI	-	VALV-114-5-135

USA
ROVSCO, Inc.
 5263 Barker Cypress Road, Suite 600
 Houston, Texas 77084, USA
 T: +1 281 858 6333
 E: sales@rovSCO.com • www.rovSCO.com



Singapore
ROVSCO ASIA Pte Ltd
 11 Changi South Street No.1, #01-03
 Singapore 486787
 T: (+65) 6546 6526
 E: sales@rovSCOasia.com • www.rovSCO.com

Adapters

CGA Nuts

Gas	CGA Number	Part Number	Pressure Rating
Air	CGA-346	NUT-W-14-2	3000 PSI
Oxygen	CGA-540	NUT-W-62	3000 PSI
Heliox	CGA-580	NUT-W-92	3000 PSI
Nitrox	CGA-296	NUT-W-29-2	3000 PSI

CGA Nipples

Gas	CGA Number	Part Number	Pressure Rating
Air	CGA-346	NIPP-W-14-3	3000 PSI
Oxygen	CGA-540	NIPP-W-63	3000 PSI
Heliox	CGA-580	NIPP-W-15-3	3000 PSI
Nitrox	CGA-296	NIPP-W-29-3	3000 PSI



Oxygen Nut

NUT-W-7
Nut for use with oxygen barb.



JIC #6 Nut

NUT-P-6-BTX-B
Nut for use with JIC barbs.



Oxygen Nipple

NIPP-W-C-19
Oxygen hose barb for 1/4" ID hose.



JIC #6 Barb

ADAP-3/8Bx#6
2 5/8" Hose barb with JIC#6 end for 3/8" ID hose.



Oxygen Barb

ADAP-3/8BxO2
2 5/8" Hose barb with oxygen end for 3/8" ID hose.



Oxygen Reusable 1/4"

FITT-99R
Reusable oxygen fitting for 1/4" ID hose.



Oxygen Reusable 3/8"

FITT-112R
Reusable oxygen fitting for 3/8" ID Armstrong hose.



Oxygen Reusable 3/8"

FITT-115R
Reusable oxygen fitting for 3/8" ID hose.



JIC #10 Reusable

FITT-001-411-10B
Reusable JIC#10 fitting for 1/2" ID hose.



Oxygen Adapter 1/4"

ADAP-W-32
Oxygen x 1/4" mpt adapter, brass.



Oxygen Adapter 3/8"

ADAP-W-142
Oxygen x 3/8" mpt adapter, brass.



Oxygen Adapter 1/2"

ADAP-7ADR
Reusable JIC#10 fitting for 1/2" ID hose.

USA
ROVSCO, Inc.
5263 Barker Cypress Road, Suite 600
Houston, Texas 77084, USA
T: +1 281 858 6333
E: sales@rovSCO.com • www.rovSCO.com



Singapore
ROVSCO ASIA Pte Ltd
11 Changi South Street No.1, #01-03
Singapore 486787
T: (+65) 6546 6526
E: sales@rovSCOasia.com • www.rovSCO.com

Adapters and Unions

NEW!



ADAPTER JIC #4
ADAP-P-4-4FTX-B
 JIC4 x 1/4" mpt adapter, brass.



ADAPTER JIC #6*
ADAP-P-6FTX-B
 JIC6 x 1/4" mpt adapter, brass
**3000 PSI RATED*



ADAPTER JIC #6
ADAP-P-6-6FTX-BJ
 JIC6 x 3/8" mpt adapter, brass.



ADAPTER JIC #6
ADAP-P-6-8FTX-B
 JIC6 x 1/2" mpt adapter, brass.



ADAPTER JIC #8
ADAP-P-8-4FTX-B
 JIC8 x 1/4" mpt adapter, brass.



ADAPTER JIC #8
ADAP-P-8-6FTX-B
 JIC8 x 3/8" mpt adapter, brass.



ADAPTER JIC #8*
ADAP-P-8-12FTX-B
 JIC8 x 3/4" mpt adapter, brass.
**3000 PSI RATED*



ADAPTER JIC #10
ADAP-10-6FTX-B
 JIC10 x 3/8" mpt adapter, brass.



ADAPTER JIC #10*
ADAP-10-6FTX-B
 JIC10 x 1/2" mpt adapter, brass.
**3000 PSI RATED*



ADAPTER JIC #16
ADAP-16-12FTX-B
 JIC16 x 3/4" mpt adapter, brass.



ADAPTER JIC #16*
ADAP-P-16-16FTX-B
 JIC10 x 1" mpt adapter, brass.
**3000 PSI RATED*



Union JIC #4*
UNIO-P-4HTX-B
 JIC4 x JIC4
**3000 PSI RATED*



Union JIC #6*
UNIO-P-6HTX-B
 JIC6 X JIC6
**3000 PSI RATED*



Union JIC #8*
UNIO-P-8HTX-B
 JIC8 X JIC8
**3000 PSI RATED*



Union JIC #10*
UNIO-P-10HTX-B
 JIC10 x 10JIC
**3000 PSI RATED*



Union, Oxygen
UNIO-W-30
 O2 X O2

USA
ROVSCO, Inc.
 5263 Barker Cypress Road, Suite 600
 Houston, Texas 77084, USA
 T: +1 281 858 6333
 E: sales@rovSCO.com • www.rovSCO.com



Singapore
ROVSCO ASIA Pte Ltd
 11 Changi South Street No.1, #01-03
 Singapore 486787
 T: (+65) 6546 6526
 E: sales@rovSCOasia.com • www.rovSCO.com

Couplers and Nipples



LP Brass Couplers and Nipples

- In order From left to right:*
Part Number: COUP-P-B23N
 1/4" Coupler x 1/4" FPT
Part Number: NIPP-BH3C
 1/4" Nipple x 1/4" FPT
Part Number: COUP-P-B23N-SL
 1/4" Coupler x 1/4" FPT w/ Sleeve Lock
Part Number: NIPP-BH2C
 1/4" Nipple x 1/4" FPT
Part Number: COUP-P-B22N
 1/4" Coupler x 1/4" MPT



Brass LP Oxygen Sockets and Plugs

- In order From left to right:*
Part Number: SOCK-GR-602
 1/4" Coupler x 1/4" FPT, Oxygen Clean
Part Number: PLUG-02
 1/4" Nipple x 1/4" FPT
Part Number: SOCK-GR-602
 1/4" Coupler x 1/8" MPT, Oxygen Clean
Part Number: SOCK-GR-603
 1/4" Coupler x 1/4" MPT



HP Brass Q.D.

- In order From left to right:*
Part Number: COUP-P-BH2-60
 1/4" Coupler x 1/4" FPT, 3700 PSI
Part Number: NIPP-P-BH2-61
 1/4" Nipple x 1/4" FPT, 3700 PSI



HP Stainless Q.D.

- In order From left to right:*
Part Number: COUP-P-SH2-62
 1/4" Coupler x 1/4" FPT, 5000 PSI
Part Number: NIPP-P-SH2-63
 1/4" Nipple x 1/4" FPT, 5000 PSI



HP Stainless Q.D.

- In order From left to right:*
Part Number: COUP-P-SH4-62
 1/2" Coupler x 1/2" FPT, 5000 PSI
Part Number: NIPP-P-SH4-63
 1/2" Nipple x 1/2" FPT, 5000 PSI

USA
ROVSCO, Inc.
 5263 Barker Cypress Road, Suite 600
 Houston, Texas 77084, USA
 T: +1 281 858 6333
 E: sales@rovSCO.com • www.rovSCO.com



Singapore
ROVSCO ASIA Pte Ltd
 11 Changi South Street No.1, #01-03
 Singapore 486787
 T: (+65) 6546 6526
 E: sales@rovSCOasia.com • www.rovSCO.com

Lift Bags

RENTAL AVAILABLE'



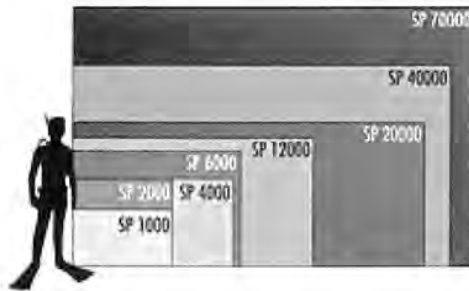
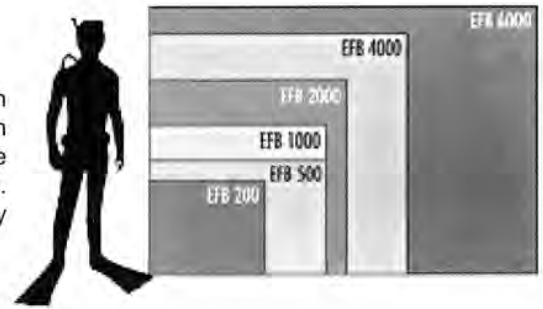
Commercial Lift Bags

Subsalve USA Commercial Lift Bags are designed to be used easily by a single diver. light in weight, yet tough enough to last a lifetime; for use in light salvage, object recovery, construction and scientific applications. These bags are really suited to remote locations or deployment from small craft.

Subsalve USA commercial lift bags are manufactured from heavy duty nylon fabric coated with urethane providing high strength and abrasion resistance as well as resistance to most petro-chemicals. Commercial lift bags have 6000 lb test, treated nylon lift straps sewn directly to the bottom on the bag and have a safe working ratio exceeding 6-1.

Enclosed Flotation Bags

Subsalve USA enclosed flotation bags adapt to a broad range of flotation requirements. The totally enclosed "pillow" shape allows for the use of the bag in any position, upright, flat, outside or inside of structures. Due to the multiple rigging combinations, EFB's allow for objects to be floated close to the surface. EFB's are perfect for vessel salvage, automobile recovery and emergency flotation systems for ships, aircraft, submersibles and ROV's.



Salvage Pontoons

Subsalve USA salvage pontoons are the most versatile and easy to use lift bags available. The unique design has been mathematically proven to provide maximum lifting capacity with the least bag weight. This design also provides for even distribution of stress over the fabric surface.

Professional Lift Bags

Subsalve USA professional lift bags are the most versatile and easy to use lift bags available. This style of bag is principally a balloon shape with a single attachment point, making these bags easy to use in construction, heavy and light salvage and many offshore tasks. The unique design has been mathematically proven to provide maximum lifting capacity with the least bag weight. This design also provides for even distribution of stress over the fabric surface.

Subsalve USA professional lift bags are manufactured from heavy duty ballistic rated nylon fabric coated with urethane. This special coated fabric has high strength, is highly abrasion resistant and is not affected by most petro-chemicals. Professional lift bags with a rating of 3 tons and over are designed with a heavy duty nylon webbing lift harness located in the skin of the bag. On these large bags, the load is born by the lift harness, which has a safe working load ratio of 6-1.



USA
ROVSCO, Inc.
 5263 Barker Cypress Road, Suite 600
 Houston, Texas 77084, USA
 T: +1 281 858 6333
 E: sales@rovSCO.com • www.rovSCO.com



Singapore
ROVSCO ASIA Pte Ltd
 11 Changi South Street No.1, #01-03
 Singapore 486787
 T: (+65) 6546 6526
 E: sales@rovSCOasia.com • www.rovSCO.com

Lift Bags

RENTAL AVAILABLE

Commercial Lift Bags

Model	C 100	C 200	C 500
Lift Capacity	120 lbs 55 kgs	220 lbs 100 kgs	550 lbs 250 kgs
Diameter	1' 4" 0.41m	1' 10" 0.56m	2' 5" 0.74m
Overall Height	2' 6" 0.77m	3' 0" 0.93m	3' 7" 1.11m
Weight	5.0 lbs 2.47 kgs	7.0 lbs 3.17 kgs	12.0 lbs 5.44 kgs



Enclosed Flotation Bags

Model	EFB 200	EFB 500	EFB 1000	EFB 2000	EFB 4000	EFB 6000
Lift Capacity	220 lbs 100 kgs	550 lbs 250 kgs	1100 lbs 500 kgs	2200 lbs 1000 kgs	4400 lbs 2000 kgs	6600 lbs 3000 kgs
Diameter	2' 5" 0.74m	2' 8" 0.82m	3' 8" 1.13m	4' 7" 1.41m	5' 9" 1.77m	6' 4" 1.93m
Overall Height	3' 2" 0.97m	4' 3" 1.31m	4' 3" 1.31m	5' 0" 1.54m	6' 3" 1.97m	9' 4" 2.87m
Weight	12.0 lbs 5.4 kgs	20.0 lbs 9.1 kgs	32.0 lbs 14.5 kgs	50.0 lbs 22.7 kgs	70.0 lbs 31.7 kgs	90.0 lbs 40.8 kgs



Salvage Pontoons

Model	SP 1	SP 2	SP 4	SP 6	SP 12	SP 20	SP 40	SP 60
Lift Capacity	1100 lbs 500 kgs	2200 lbs 1000 kgs	4400 lbs 2000 kgs	6600 lbs 3000 kgs	12200 lbs 5500 kgs	22000 lbs 10000 kgs	44000 lbs 20000 kgs	77000 lbs 35000 kgs
Diameter	2' 4" .89m	3' 8" 1.13m	3' 8" 1.36m	4' 5" 1.56m	5' 4" 1.79m	5' 9" 2.38m	7' 8" 3.07m	10' 0" 3.69m
Overall Height	4' 0" 1.44m	5' 4" 1.62m	6' 6" 2.41m	6' 8" 2.77m	10' 0" 3.33m	13' 6" 4.10m	15' 1" 6.16m	15' 6" 6.77m
Weight	30.0 lbs 13 kgs	50.0 lbs 22 kgs	80.0 lbs 36 kgs	97.0 lbs 44 kgs	140.0 lbs 64 kgs	190.0 lbs 86 kgs	375.0 lbs 173 kgs	425.0 lbs 193 kgs



Professional Lift Bags

Model	PF 1	PF 2	PF 4	PF 6	PF 12	PF 20	PF 40	PF 60
Lift Capacity	1100 lbs 500 kgs	2200 lbs 1000 kgs	4400 lbs 2000 kgs	6600 lbs 3000 kgs	12200 lbs 5500 kgs	22000 lbs 10000 kgs	44000 lbs 20000 kgs	77000 lbs 35000 kgs
Diameter	2' 11" .89m	3' 8" 1.13m	4' 6" 1.36m	5' 1" 1.56m	5' 10" 1.79m	7' 9" 2.38m	10' 0" 3.07m	12' 0" 3.69m
Overall Height	4' 8" 1.44m	5' 3" 1.62m	7' 10" 2.41m	9' 0" 2.77m	10' 10" 3.33m	12' 2" 4.10m	16' 9" 6.16m	21' 6" 6.77m
Weight	17.0 lbs 7.7 kgs	30.0 lbs 13.6 kgs	50.0 lbs 22.7 kgs	80.0 lbs 36.3 kgs	125.0 lbs 56.7 kgs	190.0 lbs 86.2 kgs	350.0 lbs 158.7 kgs	410.0 lbs 186.9 kgs



Burning Rigs and Accessories - Oxyalance

NEW!



Burning Regulator - Oxyalance

The Oxyalance REG-5-250 regulator was designed specifically for 1/2" hose and high flow requirements. This single stage regulator has a 1/2" NPT port on the output side so it can be used with 1/2" or 3/4" hose without the floor restriction of a standard regulator with 1/4" NPT output. From a high pressure cylinder this regulator will flow in excess of 10,000 SCFH. From a high pressure liquid system with external vaporizer, this regulator will flow in excess of 7,500 SCFH.



Welding Rods - Oxyalance

Oxyalance manufactures a variety of underwater welding electrodes for carbon steel as well as stainless steel. All of the electrodes meet or exceed the requirements of ANSI/AWS D3.6 Specifications for underwater welding. Oxyalance is the sole source provider of Nickel Wet Welding Electrodes for the U.S. Navy.

Burning Rods - Oxyalance

Oxyalance manufactures underwater cutting electrodes in both an exothermic design, the Aqua EXO and a tubular steel Aqualance™. The Aqua EXO will burn without power after it is ignited. The Aqualance is an Oxy Arc rod that requires 300 amps of electricity to maintain the arc. All of the rods have a proprietary plating process that prevents the exterior of the rod from corrosion. Oxyalance uses a continuous heat shrink process for insulation that will not unwrap or become brittle in cold water. The rods can be used in other manufacturers holders, however, the collet may have to be enlarged slightly due to the plating process.

Products - Welding Electrodes

- 1/8" Mild Steel Wet Welding Electrode
- 5/32" Mild Steel Wet Welding Electrode
- 3/32" Mild Steel Wet Welding Electrode

Products - Burning Rods

- 3/8" x 18" Exothermic Cutting Rod
- 5/16" x 16" Tubular Steel Cutting Rod
- 3/8" Collet for Craftsweld or Broco® Torches
- 5/16" Collet for Craftsweld or Broco® Torches



USA
ROVSCO, Inc.
 5263 Barker Cypress Road, Suite 600
 Houston, Texas 77084, USA
 T: +1 281 858 6333
 E: sales@rovSCO.com • www.rovSCO.com



Singapore
ROVSCO ASIA Pte Ltd
 11 Changi South Street No.1, #01-03
 Singapore 486787
 T: (+65) 6546 6526
 E: sales@rovSCOasia.com • www.rovSCO.com

Ultrasonic NDT



Cygnus 1 - Ultrasonic Thickness Gauge

The Cygnus 1 is one of the only ultrasonic thickness gauges that is fully submersible in salt water. This unit has been pressure tested to 300m and features rugged, shock proof protection, stable calibration, a large, bright LED display for poor visibility and rechargeable batteries with charger. With the Cygnus 1, there is no need for coating removal.

Standard Unit Specifications

- Double O-Ring Seal
- Remote Probe
- Large LED Display
- Heavy-Duty Construction
- Tested to 300m

Options

- Topside Repeater
- Datalogger



Cygnus 2 - Ultrasonic Thickness Gauge

The Cygnus 2 features Single crystal probe to ensure accurate measurements on curved and heavily corroded back walls. It's also shock proof and environmentally sealed. For underwater use, the probe (up to 300') can be sent down with the diver while the display stays topside. There is no need for coating removal with the Cygnus 2 as it reads only metal thickness.

These units readings are accepted by all major classification societies.

Standard Unit Specifications

- Remote Probe
- Large LED Display
- Heavy-Duty Construction

Options

- Cable (up to 300')
- Datalogger



USA
ROVSCO, Inc.
 5263 Barker Cypress Road, Suite 600
 Houston, Texas 77084, USA
 T: +1 281 858 6333
 E: sales@rovSCO.com • www.rovSCO.com



Singapore
ROVSCO ASIA Pte Ltd
 11 Changi South Street No.1, #01-03
 Singapore 486787
 T: (+65) 6546 6526
 E: sales@rovSCOasia.com • www.rovSCO.com

Probes



Polatrak® CP Probe

This gun is a self-contained, diver operated cathodic protection meter/probe. It features twin Ag/AgCl electrodes and is depth rated to 1000 FSW.

Features and Specifications

- Twin Ag/AgCl Electrodes
- Contact Probe (Bathycorrometer Style)
- Replaceable Electrodes
- 1000 FSW Rating
- Integral Voltage Readout
- Diver Held
- Neutrally Buoyant

DEEPWATER

Polatrak® ROV II™

It can be used as either a proximity or tip contact probe mounted to an ROV. This unit is reliable and rated to 10,000 FSW.

Features and Specifications

- Twin Ag/AgCl Electrodes
- Proximity or Contact Probe
- Replaceable Electrodes
- 10,000 FSW Rating
- Diver Held or ROV Interfaced



USA
ROVSCO, Inc.
 5263 Barker Cypress Road, Suite 600
 Houston, Texas 77084, USA
 T: +1 281 858 6333
 E: sales@rovSCO.com • www.rovSCO.com



Singapore
ROVSCO ASIA Pte Ltd
 11 Changi South Street No.1, #01-03
 Singapore 486787
 T: (+65) 6546 6526
 E: sales@rovSCOasia.com • www.rovSCO.com

Draeger Gas Detection



In many industrial applications, safety is ensured around the clock by a fixed gas system. Hazards can have several origins: the release of toxic gases, oxygen deficiency or enrichment as well as the presence of combustible gases and vapors. When detected at an early stage, countermeasures can be initiated to protect personnel, workplaces, and equipment.

Draeger Gas Detection Hand Pump



- Draeger Gas Detector Pumps**
- * Gas Detector Pump accuro
 - * Automatic Pump accuro 2000
 - * Automatic Pump Quantimeter1000

Accuro 2000



Different Draeger gas detector pumps have been developed to suit specific applications: accuro gas detector pump, manually operated bellows pump for short term measurements. Accuro 2000, used in combination with the Accuro as automatic pump system for short-term measurements. Quantimeter 1000, automatic gas detector pump for short term measurements in areas where intrinsic safety is required.

Draeger Pac III



Draeger Pac III

- * Complete Instrument Family
- * More than 20 sensors in 3 sensor families
- * Individually configureable
- * Power supply, Various
- * Adjustable Alarm and testing Parameters

Pac III is a family of single gas measuring units with the version Pac III B CO, H₂S or O₂; Pac III E optionally has a data logger and special alarm evaluation for TRGS/ACGIH.

Quantimeter 1000



Draeger Tubes



Draeger-Tubes for long term measurement

- * Draeger Long-Term Tubes
- * Draeger Diffusion Tubes
- * Draeger Badges

Direct reading measuring systems can be used to determine average concentrations over periods of several hours, for example during a work shift of up to eight hours. Organic and inorganic gases and vapors can be monitored in terms of personal or area measurements.



Draeger-Tubes for short term measurement

- * Spot measurement
- * Personal Monitoring
- * Confined Space Measurement
- * Leak detection at Pipelines
- * Measurement of Emission and Emission

Short-term measurements are carried out either manually using the accuro gas detector pump or automatically with the accuro 2000 automatic pump. In explosion hazard areas, the compact and microprocessor-controlled Quantimeter 1000 automatic pump can be used.

Gas	Item	Measuring Range	Tube #
Oxygen	5% /b	5-23 Vol %	67 28081
Carb. Dio.	5% /b	0.01-0.3 Vol. %	CH 30801
Carb. Dio.	0.1% /a	0.1-6 Vol. %	CH 23501
Carb. Dio.	0.5% /a	0.5-10 Vol. %	CH 31401
Carb. Dio.	1%	1-20 Vol. %	CH25101
Carb. Dio.	5% /a	5-60 Vol. %	CH20301
Carb. Mon.	2/a	2-300 ppm	67 33051
Carb. Mon.	5/c	5-700 ppm	CH25601
Carb. Mon.	8/a	8-150 ppm	*CH19701
*Only for CO in H₂			
Carb. Mon.	10 /b	10-3000 ppm	CH20601
Carb. Mon.	0.1% /a	0.1-1.2 Vol. %	CH29601
Carb. Mon.	0.3% /a	0.3-4 Vol. %	CH24901
Carb. Mon.	0.3% /b	0.3-7 Vol. %	CH29901
Oil Mist	1/a	1-10 mg/m ³	67 33031
Oil Mist	10/a-P	25-100 micro gr.	67 28371
Oil Mist Tubes are an Aerosol			
Water Vapor	0.1/a	0.05-1 mg/l	81 01321
Water Vapor	0.1-20 mg/l	0.1-20 mg/l	81 01081
Water Vapor	0.1	1-40 mg/l	CH 23401

USA
ROVSCO, Inc.
 5263 Barker Cypress Road, Suite 600
 Houston, Texas 77084, USA
 T: +1 281 858 6333
 E: sales@rovSCO.com • www.rovSCO.com



Singapore
ROVSCO ASIA Pte Ltd
 11 Changi South Street No.1, #01-03
 Singapore 486787
 T: (+65) 6546 6526
 E: sales@rovSCOasia.com • www.rovSCO.com

Draeger Gas Detection

Draeger Civil Defense Set DRAxx

The Draeger Civil Defense Set is a means to detect eight chemical substances, including nerve, blood, lung, nose and throat irritating agents. With the ability to detect these agents quickly and easily, CDS is simple enough to be used by any Emergency Responder. Just assemble, squeeze and evaluate the color changes against the instruction sheet. So you have the ability to always be prepared for the worst, anywhere!

Features:

- * Rugged Foam Padded Carrying Case
- * 10 Civil Defense Sets
- * 2 Accuro Pumps
- * Laminates Color Instruction Sheets
- * 2 Extension Hoses
- * 2 Simultan test Set Openers



Draeger HazMat Simultest Kit DRAxx

Hazardous Materials Squads and Emergency Responders are often faced with difficult situations where it is critical to identify an unknown substance. The Draeger HazMat Simultest Kit was designed for this application. It provides rapid identification and quantification of an unknown substance and aids in the determination of what actions need to be taken.

Features:

- * Rugged Foam Padded Carrying Case
- * 10 Test Sets
- * Accuro Bellows Pump
- * Laminated Instruction Cards
- * 2 Extension Hoses
- * Air Current Kit



Draeger Aerotest Simultan HP Kit DRA6525951

The quality of the Breathing Air can be tested in accordance to the valid purification standards by means of quantitative measurements of the contaminations. Different regulations can be fulfilled (e.g. DIN EN 12021).

Quick-Check, High Accuracy Measurements in 5 Minutes

The measuring device, G 5/8 or INT connection, can be connected to High Pressure Compressed air supply systems.

Technical Data

- * Carrying Case: L 300 mm x H 360 mm x D 80 mm
- * Weight: 3 kg
- * Supply Pressure: 200/300 bar
- * Connection: G 5/8 or INT
- * Flow: 0.2 L/min and 4.0 L/min
- * 2 Simultan test Set Openers

Complete Aerotest Simultan HP Kit

- * One Reducer with Hand Operation
- * One Measuring Device for 4 Tubes
- * One Timer
- * One Break-off facility for tubes
- * One Instruction for Use Manual
- * One box of 10 Draeger tubes, carbon 100/a-P
- * One box of 10 Draeger tubes, carbon monoxide 5/a-P
- * One box of 10 Draeger tubes, oil 10/a-P
- * One box of 10 Draeger tubes, water vapor 20/a-P
- * One Transport Case

Aerotest Simultan HP - without Draeger Tubes

- * One Reducer with Hand Operation
- * One Measuring Device for 4 Tubes
- * One Timer
- * One Break-off facility for tubes
- * One Instruction for Use Manual
- * One Transport Case



** not shown with reducer

Draeger Aerotest Simultan LP Kit DRA6525924

The quality of the Breathing Air can be tested in accordance to the valid purification standards by means of quantitative measurements of the contaminations. Different regulations can be fulfilled (e.g. DIN EN 12021).

Quick-Check, High Accuracy Measurements in 5 Minutes

The measuring device, barbed nipple, can be connected to Low Pressure Compressed air supply systems.

Technical Data

- * Carrying Case: L 300 mm x H 360 mm x D 80 mm
- * Weight: 3 kg
- * Supply Pressure: Max. 10 bar
- * Connection: barbed nipple
- * Flow: 0.2 L/min and 4.0 L/min

Complete Aerotest Simultan LP Kit

- * One Measuring Device for 4 Tubes
- * One Timer
- * One Break-off facility for tubes
- * One Instruction for Use Manual
- * One box of 10 Draeger tubes, carbon 100/a-P
- * One box of 10 Draeger tubes, carbon monoxide 5/a-P
- * One box of 10 Draeger tubes, oil 10/a-P
- * One box of 10 Draeger tubes, water vapor 20/a-P
- * One Transport Case

Aerotest Simultan LP - without Draeger Tubes

- * One Measuring Device for 4 Tubes
- * One Timer
- * One Break-off facility for tubes
- * One Instruction for Use Manual
- * One Transport Case



Kit Part #65 25 925

Draeger Tubes for the Aerotest LP and HP

- | | |
|--|-----------------|
| * One box of 10 Draeger tubes, carbon 100/a-P | Part #67 28 521 |
| * One box of 10 Draeger tubes, carbon monoxide 5/a-P | Part #67 28 511 |
| * One box of 10 Draeger tubes, oil 10/a-P | Part #67 28 371 |
| * One box of 10 Draeger tubes, water vapor 20/a-P | Part #81 03 061 |

USA
ROVSCO, Inc.
 5263 Barker Cypress Road, Suite 600
 Houston, Texas 77084, USA
 T: +1 281 858 6333
 E: sales@rovSCO.com • www.rovSCO.com



Singapore
ROVSCO ASIA Pte Ltd
 11 Changi South Street No.1, #01-03
 Singapore 486787
 T: (+65) 6546 6526
 E: sales@rovSCOasia.com • www.rovSCO.com

RD400™

Diver's Wide Angle Underwater Color Camera

Ultra Small & Light weight, 350 meter depth rated

Wide Angle, 130 degrees FOV



Diameter: Front 38 mm, Body 32 mm
Length: 122 mm (excluding connector)

The Rovsco RD400™ is a high resolution Wide Angle color video camera based on the latest Sony CCD technology. Its light weight and small size makes it an ideal choice for commercial diver helmets, small ROVs or underwater surveillance. Optical Components of this camera have been carefully selected to provide distortion free video from the deep oceans. The camera is wide angle and provides 130 degrees field of view making it extremely useful when viewing the deepsea work and for survey of the work site. Its low light sensitivity shows some of the finest details of the subsea work and equipment making it extremely useful for supervisors and project managers.

Options:

Available in PAL or NTSC.

Features:

- Extremely light weight, 1.7 Oz (.05 kg) in seawater
- Wide Angle, 130 degrees field of view
- High Resolution, 570 TV Lines
- Excellent colors even in low light conditions, 0.01 Lux
- Rugged, designed for offshore
- Small size, ideal for commercial divers and small ROVs

Applications:

- Diver Helmet
- ROVs Manipulator
- Homeland Security
- Harbor Surveillance

Specifications are subject to change without notice in line with Rovsco's policy of continuous product improvement

USA

ROVSCO, Inc.

5263 Barker Cypress Road, Suite 600

Houston, Texas 77084, USA

T: +1 281 858 6333

E: sales@rovSCO.com • www.rovSCO.com



Rovsco
INNOVATIVE DEEP OCEAN TECHNOLOGIES

Singapore

ROVSCO ASIA Pte Ltd

11 Changi South Street No.1, #01-03

Singapore 486787

T: (+65) 6546 6526

E: sales@rovSCOasia.com • www.rovSCO.com

ToughCam SM1000TM

Rugged High Quality Camera, Wide Angle 130 degree, designed for Marine Salvage Operations

Rovsco offers a finest and most reliable range of Subsea Video Cameras designed to provide trouble-free service and outstanding color video.

The Rovsco ToughCam SM1000TM is a high resolution wide angle color camera based on the latest Sony CCD technology. It's specifically designed for the subsea salvage industry. Camera Housing is made of 316 stainless steel and the front port is made of Sapphire which makes it virtually indestructible. It's light weight makes it a perfect choice for helmet mounting or on a handheld bracket for close up inspection. Cameras high resolution provides minute details when inspecting welds, etc. Optical components have been carefully selected to provide distortion free video.

The camera is wide angle to provide a 130 degree field of view. It's low light sensitivity will pick up extremely fine visual details when observing even in low light conditions making it e useful for Diving Supervisors and Project Managers.

Specification

Mechanical

Size:	Length: 126 mm (4.96 inch) Diameter: Front: 38 mm Middle: 33 mm
Weight:	in air: 0.4 kg in seawater: 0.2 kg
Depth Rating:	1000 meter
Housing Mat'l:	316 Stainless
Front Port:	Sapphire

Electrical & Optical

Image Device:	Hi Res 1/3 inch Sony CCD
Field of View:	130 degrees
Sensitivity:	0.01 Lux
Resolution:	570 Lines
Video Out	1 V P-P (75 ohm)
Power	11 - 30 VDC
S/N Ratio	>50 db



Features

- ◆ Extremely Light weight
- ◆ Rugged, virtually indestructible
- ◆ Wide Angle 130 degree FOV
- ◆ High Resolution 570 TV Lines
- ◆ Low Light Sensitivity 0.01 Lux
- ◆ 1000 m Depth Rating (3280 fsw)
- ◆ Stainless Steel Housing
- ◆ Sapphire Front Port
- ◆ Finest Video Colors
- ◆ PAL or NTSC

Application

- ◆ Marine Salvage Operations
- ◆ Work Class ROVs

USA

ROVSCO, Inc.

5263 Barker Cypress Road, Suite 600

Houston, Texas 77084, USA

T: +1 281 858 6333

E: sales@rovSCO.com • www.rovSCO.com



Singapore

ROVSCO ASIA Pte Ltd

11 Changi South Street No.1, #01-03

Singapore 486787

T: (+65) 6546 6526

E: sales@rovSCOasia.com • www.rovSCO.com

RD300™ Color Camera for Commercial Divers

Ultra Small & Light weight, 350 meter depth rated



Designed for offshore commercial divers, the Rovsco RD300™ is a high resolution color video camera based on the latest Sony CCD technology. Its light weight and small size makes it an ideal choice for commercial diver helmets, small ROVs or underwater surveillance. Optical Components of this camera have been carefully selected to provide distortion free video. The camera provides 92 degrees field of view making it extremely useful when viewing the deepsea work and for survey of the work site. Its low light sensitivity shows some of the finest details of the subsea work and equipment making it extremely useful for supervisors and project managers.

Diameter: 32 mm (1.25")
Length: 124 mm (excluding connector)

Features:

- Rugged, designed for offshore work
- Extremely light weight, 1.7 Oz (.05 kg) in seawater
- 92 degrees field of view
- High Resolution, 620 TV Lines
- Excellent colors even in low light conditions, 0.01 Lux
- Rugged, designed for offshore
- Small size, ideal for commercial divers or small ROVs

Applications:

- Diver Helmet
- ROVs Manipulator
- Homeland Security
- Harbor Surveillance

Available in PAL or NTSC

Specifications are subject to change without notice in line with Rovsco's policy of continued product improvement

USA

ROVSCO, Inc.

5263 Barker Cypress Road, Suite 600

Houston, Texas 77084, USA

T: +1 281 858 6333

E: sales@rovsco.com • www.rovsco.com



Singapore

ROVSCO ASIA Pte Ltd

11 Changi South Street No.1, #01-03

Singapore 486787

T: (+65) 6546 6526

E: sales@rovscoasia.com • www.rovsco.com

RENTAL AVAILABLE'

Commercial Diver's Video Unit

DVU-224

Rovsco's Commercial Diver Video Unit DVU-224 is based on the latest video and electronics technology. Video received from the divers is displayed on a high resolution LCD monitor. The unit is equipped with a light dimmer to adjust to various work conditions, It also comes with a keyboard textwriter to allow writing various comments during the dive operations, which become a permanent record for later reference. The video and audio communication with the divers is stored on a high quality Digital/DVD Ram Recorder, which can be edited and recorded on a DVD.

When interfaced to a computer, an optional Firewire output allows video and audio communication with the divers to be stored in digital format on the computer's hard drive which may be used for sending viewed data via email to the main office or the customer.

PAL / NTSC



Features

- High Resolution 10.5 inch LCD Monitor
- DVD/HDD Recorder
- Firewire Video interface
- Light Dimmer
- Video Overlay Textwriter
- Time/Date display
- Rugged case for Protection
- 110 / 220 AC

Application

- Commercial Diving
- Military
- Coast Guard
- Surveillance

USA

ROVSCO, Inc.

5263 Barker Cypress Road, Suite 600

Houston, Texas 77084, USA

T: +1 281 858 6333

E: sales@rovSCO.com • www.rovSCO.com



Singapore

ROVSCO ASIA Pte Ltd

11 Changi South Street No.1, #01-03

Singapore 486787

T: (+65) 6546 6526

E: sales@rovSCOasia.com • www.rovSCO.com

'New'
SEABrite

Low Voltage Mini Underwater Light for Commercial Divers

The Rovsco's new Mini Underwater Light Model SeaBrite has been specifically designed for commercial divers for a wide and effective coverage during subsea work and for clear video recording during the subsea operation. Its small size makes it ideal for helmet mounting.

The light is rated for 365 meter depth and is extremely light weight in the ocean, 0.085 kg.

SEABrite-12 12 VDC
SEABrite-24 24 VDC



Specification

Mechanical

Diameter:		
	Main Body	1.70 inch (43 mm)
Length		2.90 inch (74 mm) (excluding connector)
Weight in air		9.0 ounce (.25 kg)
Weight in water		3.0 ounce (.085 kg)
Depth Rating		1200 feet (365 m)
Housing Mat'l		Hard Anodized Aluminum

Electrical

Voltage		12 VDC or 24 VDC
Wattage		37 watts
Beam Angle		35 degrees
Connector		XSG-2-BCL (other connectors available)
	Pin 1	Ground (-) (Large Pin)
	Pin 2	Power (DC Volts)

Applications

- Diver's Helmet
- Underwater Video
- underwater surveillance

All specifications are subject to change without notice in line with Rovsco's policy of continued product development

USA
ROVSCO, Inc.
5263 Barker Cypress Road, Suite 600
Houston, Texas 77084, USA
T: +1 281 858 6333
E: sales@rovSCO.com • www.rovSCO.com



Singapore
ROVSCO ASIA Pte Ltd
11 Changi South Street No.1, #01-03
Singapore 486787
T: (+65) 6546 6526
E: sales@rovSCOasia.com • www.rovSCO.com

SEADragon-XBR

Extremely Bright Underwater LED Light

The Rovsco SEADragon-XBR LED Light is specifically designed for commercial divers for air and sat diving. It is extremely bright and provides excellent light coverage during subsea work for visibility during work and for clear and detailed video recording, and yet it draws very little current. Its small size and light weight (1.50 Oz) makes it ideal for helmet mounting. The light is rated for 300 meter depth.



Extremely Bright
(Equivalent to 300 watt Halogen)

Dimmable

Specification

Mechanical

Diameter:	
front	2.11 inch (54 mm)
Main Body	1.73 inch (44 mm)
Length	2.80 inch (71 mm) (excluding connector)
Weight in air	7.76 ounce (.22 kg)
Weight in water	1.50 ounce (.042 kg)
Depth Rating	1000 fsw (300 meters)
Housing Mat'l	Hard Anodized Aluminum
Light Output:	2270 Lumens, Equivalent to 300 watt Halogen

Electrical

Voltage	8 - 24 VDC
Current at 24 VDC	0.72 amps
Current at 12 VDC	1.22 amps
Beam Angle	165 degrees
Connector	XSG-2-BCL or XSG-3-BCL (other connectors available)
Pin 1	Ground (-) (Large Pin)
Pin 2	Power (+ DC Volts)

Applications

- Diver's Helmet
- ROV's Work Light
- Underwater Work Site Illumination
- Underwater surveillance

All specifications are subject to change without notice in line with Rovsco's policy of continued product development

USA
ROVSCO, Inc.
 5263 Barker Cypress Road, Suite 600
 Houston, Texas 77084, USA
 T: +1 281 858 6333
 E: sales@rovSCO.com • www.rovSCO.com



Singapore
ROVSCO ASIA Pte Ltd
 11 Changi South Street No.1, #01-03
 Singapore 486787
 T: (+65) 6546 6526
 E: sales@rovSCOasia.com • www.rovSCO.com

Diver Video Systems & Accessories

RENTAL AVAILABLE

Commercial Diver's Video Unit Model DVU-200

Rovsco's Commercial Divers Video unit is based on the latest technology. Video received from the diver's subsea camera is displayed on a high resolution LCD Monitor. This Video and also audio communication with the diver can also be stored on a Digital/DVD recorder, which can be viewed later or stored on a DVD for record keeping or to provide to the customer. This Video/audio information can also be edited and recorded.

Please contact us for more details.



Diver300™ Color Camera
Light Weight, Delrin Housing,
300 meter depth



Portable Diver Video
Controller



Diver's Low Voltage
Underwater light Model
RL-300

Diver's Video & Light Cable



**If you require a Custom
Video System Please
Contact us!**

USA
ROVSCO, Inc.
5263 Barker Cypress Road, Suite 600
Houston, Texas 77084, USA
T: +1 281 858 6333
E: sales@rovSCO.com • www.rovSCO.com



Singapore
ROVSCO ASIA Pte Ltd
11 Changi South Street No.1, #01-03
Singapore 486787
T: (+65) 6546 6526
E: sales@rovSCOasia.com • www.rovSCO.com

VIDEO OVERLAY & TYPEWRITER UNIT

Rovsco Model: 78613-04



The unit is a stand alone video character generator that works with a standard PC keyboard to add titles and captions to your video. It can add up to nine lines of 20 characters each, and the best part is no PC or PC software is required! In addition it also includes a battery backed up clock/calendar which can overlay your video with a variety of formats of time and date displays. Because the unit has its own built-in text editor that performs the common typing operations of insert, delete, backspace, home, end, etc., you can quickly add source ID information, title or caption experiments, identify security locations, and perform similar titling/captioning tasks. The unit can also be controlled from front panel switches.

Features:

- Built-in text editor commands include insert, delete, backspace, page up, page down, home, end, etc.
- Adjustable character attributes for horizontal and vertical size and position, black/white, mask on/off, contrast, etc.
- Separate setup screens for Display, System, Time, and Date.
- 36 time display formats, 60 date display formats, including day-of-week displays.
- "Split-Screen" vertical mode places the first 5 lines at the top and the last 4 lines at the bottom of the display. Quickly and easily user adjustable to move titles out of the way of the action.

Power Requirement: 9 VDC

Dimensions: 3" x 1.75" x 5"

Connectors: Video In: 1 BNC, Video Out: 1 BNC, Keyboard: 1 Mini DIN

Weight: 2 lbs

All specifications are subject to change without notice in line with Rovsco's policy of continued product development

USA

ROVSCO, Inc.

5263 Barker Cypress Road, Suite 600

Houston, Texas 77084, USA

T: +1 281 858 6333

E: sales@rovsco.com • www.rovsco.com



Singapore

ROVSCO ASIA Pte Ltd

11 Changi South Street No.1, #01-03

Singapore 486787

T: (+65) 6546 6526

E: sales@rovscoasia.com • www.rovsco.com

Lights



Founded in 1954, BIRNS, Inc. of Oxnard, CA, is a leading manufacturer of high-performance lighting and connector systems for deep-ocean and nuclear use. In addition to the famous Snooper, Kelvin, Corona and Blackbirn, BIRNS manufactures over 40 other types of lighting products, and six different connector ranges. Connectors include Aquamate wet-mateables and Millennium high-density deep-submergence styles.



- Brilliant illumination
- An extremely rugged fixture, proof against most mechanical abuse
- Ability to be customized to make it perfect for almost any application

The **SNOOPER II** is versatile and is used by divers, on diving bells, submarines, ROV's, etc. It is available in hand-held and yoke-mounted models, with choice of 600 to 1,000-watt lamp, and four different lens options. It's an excellent light for general-purpose illumination, and is also very good for color or black and white filming and videotaping.

- 5564** Snooper II with Handgrip
- 5567** Snooper II with Yoke



- Small, low-voltage underwater light
- Brilliant illumination, true-white color
- Versatile and rugged design

Part Number: **5672**

The low-voltage **SNOOPERETTE** is versatile and small, and is perfect for divers, cameras and ROV's. It can be helmet-mounted, hand-held, or yoke-mounted. It's an excellent light for general-purpose illumination, filming, and videotaping.



- Choice of 25 to 50-watt lamp
- Choice of four different lens options
- Superior thermal design permits the use of higher-output lamps than in competing models
- BIRNS' exclusive 'doubly safe' dual helium release method

Part Number: **4121**

The **BIRNS Model 4121** Doubly-Safe Chamber Light is an extremely popular light for general-purpose illumination. Extensive testing has proven the BIRNS Chamber Light to meet or exceed applicable Det Norske Veritas (DNV), Lloyd's, and UL requirements.



- Superior thermal design
- Case ground (earth)
- 28 V lamps

Part Number: **4132**

The **BIRNS Model 4132** General-Area Chamber Light provides general-area illumination inside pressurized chambers. Superior thermal design permits use of higher-output lamps, providing more illumination in the chamber. It comes complete with 28 V lamp (power ratings =28 W),

USA
ROVSCO, Inc.
 5263 Barker Cypress Road, Suite 600
 Houston, Texas 77084, USA
 T: +1 281 858 6333
 E: sales@rovSCO.com • www.rovSCO.com



Singapore
ROVSCO ASIA Pte Ltd
 11 Changi South Street No.1, #01-03
 Singapore 486787
 T: (+65) 6546 6526
 E: sales@rovSCOasia.com • www.rovSCO.com

Plugs and Accessories

- A. RMG-4-FS Four Pin Female W/P Connector
- RMG-3-FS Three Pin Female W/P Connector
- RMG-2-FS Two Pin Female W/P Connector
- B. RMG-4-MP Four Pin Male W/P Connector
- RMG-3-MP Three Pin Male W/P Connector
- RMG-2-MP Two Pin Male W/P Connector



All "C" and "D" Items have Gripper Body.

- C. RMG-4-FS/G Four Pin Female W/P Connector
- RMG-3-FS/G Three Pin Female W/P Connector
- RMG-2-FS/G Two Pin Female W/P Connector
- D. RMG-4-MP/G Four Pin Male W/P Connector
- RMG-3-MP/G Three Pin Male W/P Connector
- RMG-2-MP/G Two Pin Male W/P Connector



- E. RMG-4-FSD Four Pin Female Dummy Plug
- F. RMG-MPD Male Dummy Plug
- G. HP-ADAP-B Head Phone Adapter- 1/4" Mono Female x Dual Banana, Black
- HP-ADAP-R Head Phone Adapter- 1/4" Mono Female x Dual Banana, Red



- H. HP-ADAP1-B Head Phone Adapter- 1/4" Mono Male x Dual Banana, Black
- HP-ADAP1-R Head Phone Adapter- 1/4" Mono Male x Dual Banana, Red



- I. MLS Male Delrin Locking Sleeve for Underwater Connector
- J. FLS Female Delrin Locking Sleeve for Underwater Connector

- K. 515-035 Communications Post Complete
- L. 33-290-BU Dual Communications Posts
- M. MDP-BLACK Dual Banana Plug, Black
- MDP-RED Dual Banana Plug, Red



- N. APS30 Soldering Pencil
- O. S100 Solder
- P. SW-500-G Speaker Wire, Double Insulated, By the Foot



- Q. 926 Battery, 12 Volt Lantern
Quantity Pricing Available

USA
ROVSCO, Inc.
 5263 Barker Cypress Road, Suite 600
 Houston, Texas 77084, USA
 T: +1 281 858 6333
 E: sales@rovSCO.com • www.rovSCO.com



Singapore
ROVSCO ASIA Pte Ltd
 11 Changi South Street No.1, #01-03
 Singapore 486787
 T: (+65) 6546 6526
 E: sales@rovSCOasia.com • www.rovSCO.com

Connectors, Electrical



RMG-2-FSD Female dummy plug, 2 pin	RMG-2-MPD Male dummy plug, 2 pin
RMG-3-FSD Female dummy plug, 3 pin	RMG-3-MPD Male dummy plug, 3 pin
RMG-4-FSD Female dummy plug, 4 pin	RMG-4-MPD Male dummy plug, 4 Pin
RMG-5-FSD Female dummy plug, 5 pin, with locking sleeve	RMG-5-MPD Male dummy plug, 5 pin, with locking sleeve



P/N: **MLS** P/N: **FLS**
 The FLS and MLS locking sleeves fit up to 4 pin waterproof electrical connectors.
"Does not fit "gripper" plugs



Waterproof Electrical Connectors

Connector	Description
RMG-2-MP	2 pin male connector, 18" lead
RMG-2-FS	2 pin female connector, 18" lead
RMG-2-MP/G	2 pin male connector, Grip Rings, 18" lead
RMG-2-FS/G	2 pin female connector, Grip Rings, 18" lead
RMG-3-MP	3 pin male connector, 18" lead
RMG-3-FS	3 pin female connector, 18" lead
RMG-3-MP/G	3 pin male connector, Grip Rings, 18" lead
RMG-3-FS/G	3 pin female connector, Grip Rings, 18" lead
RMG-4-MP	4 pin male connector, 18" lead
RMG-4-FS	4 pin female connector, 18" lead
RMG-4-MP/G	4 pin male connector, Grip Rings, 18" lead
RMG-4-FS/G	4 pin female connector, Grip Rings, 18" lead

Additional underwater mate-able and in-line connectors & penetrators available. Please call!



Penetrators
 P/N: **SCCCP** - 1/2" S/S, 1000 psi penetrator, 18/4 wire, 6' cable.
 Available in 1" and also with up to 12 conductors
 P/N: **3/4" PENETRATOR** - 16/8 wire, 6' cable



P/N: **RMK-5-FS**
 5 pin female connector with female locking sleeve.

P/N: **RMK-5-MP**
 5 pin male connector with male locking sleeve.

Accessories/Splicing



P/N: **82-F1**
 Single line splicing kit



P/N: **82-BF1**
 Y Line splicing kit



P/N: **SPLICING TAPE**



P/N: **APS30**
 Soldering pencil



P/N: **S100**
 Rosin core solder



P/N: **151105**
 Wire eyes



Bulkhead Connectors
 P/N: **3602** - 3 Pin male connector
 P/N: **XSK-5-BCL** - 5 Pin male connector
 Available with solder cups or pigtails

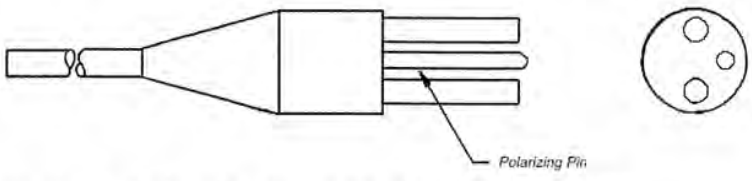
USA
ROVSCO, Inc.
 5263 Barker Cypress Road, Suite 600
 Houston, Texas 77084, USA
 T: +1 281 858 6333
 E: sales@rovSCO.com • www.rovSCO.com



Singapore
ROVSCO ASIA Pte Ltd
 11 Changi South Street No.1, #01-03
 Singapore 486787
 T: (+65) 6546 6526
 E: sales@rovSCOasia.com • www.rovSCO.com

Connectors, Electrical

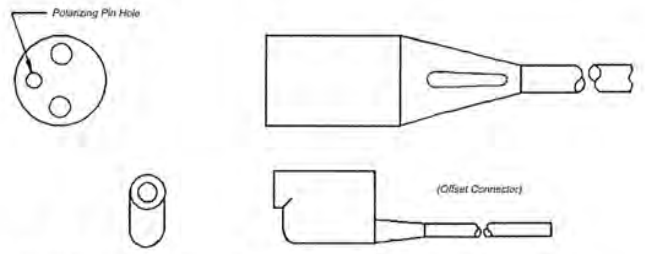
COOPER Crouse-Hinds



Series 51 Male Connector "Underwater Pluggable"

Model	No. Contacts	No. Pins	Max. Volts	Contacts/Pin	Amp Rating	Wire Size/AWG	Mates With -
51E1M-1	1	1	230	1	15	16	51EHF, 53E1F, 59E1F, Series 54 & 84 J Box
51E1M-80	1	1	230	1	15	16	51EHF, 53E1F, 59E1F, Series 54 & 84 J Box
51H1M-1	1	1	440	1	60	8	51H1F, 53H1F, Series 54 J Box
51E2M-1	2	2	230	1	15	16	51E2F, 53E2F, Series J Box
51F2M-1	2	1	115	2	7.5	18	51F2F, 53F2F, 59F2F, Series 54 & 84 J Box
51F2M-50	2	1	115	2	7.5	18	51F2F, 53F2F, 59F2F, Series 54 & 84 J Box
51E3M-1	3	3	230	1	15	16	51E3F, 53E3F, Series 54 J Box
51H3M-1	3	3	440	1	60	6	51H3F, 53H3F, Series 54 J Box
51L3M-1	3	3	440	1	100	4	51L3F, 53L3F, Series 54 J Box
51E4M-1	4	4	230	1	15	19	51E4F, 53E4F, Series 54 J Box
51F4M-1	4	2	115	2	7.5	18	51F4F, 53F4F, Series 54 J Box
51H4M-1	4	4	440	1	60	6	51H4F, 53H4F, Series 54 J Box
51L4M-1	4	4	400	1	85	4	51L4F, 53L4F, Series 54 J Box
51F6M-1	6	3	115	2	7.5	18	51F6F, 53F6F, Series 54 J Box
51F8M-1	8	4	115	2	7.5	18	51F8F, 53F8F, Series 54 J Box

COOPER Crouse-Hinds



Series 51 Female Connector "Underwater Pluggable"

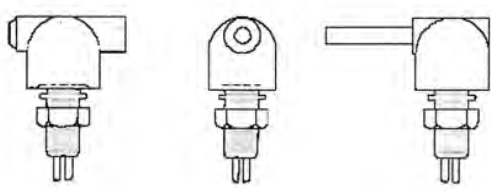
Model	No. Contacts	Max. Volts	Amp Rating	Wire Size/AWG	Mates With -
51E1F-1	1	230	15	16	51E1M, 53E1M, 59E1M
51E1F-80	1	230	15	16	51E1M, 53E1M, 59E1M
51H1F-1	1	440	60	8	51H1M, 53H1M
51E2F-1	2	230	15	16	51E2M, 53E2M
51F2F-1	2	115	7.5	18	51F2M, 53F2M, 59F2M
51F2F-10	2	115	7.5	18	51F2M, 53F2M, 59F2M
51E3F-1	3	230	15	16	51E3M, 53E3M
51H3F-1	3	440	60	6	51H3M, 53H3M
51L3F-1	3	440	100	4	51L3M, 53L3M
51E4F-1	4	230	15	16	51E4M, 53E4M
51F4F-1	4	115	7.5	18	51F4M, 53F4M
51H4F-1	4	440	60	6	51H4M, 53H4M
51L4F-1	4	440	85	4	51L4M, 53L4M
51F6F-1	6	115	7.5	18	51F6M, 53F6M
51F8F-1	8	115	7.5	18	51F8M, 53F8M

USA
ROVSCO, Inc.
 5263 Barker Cypress Road, Suite 600
 Houston, Texas 77084, USA
 T: +1 281 858 6333
 E: sales@rovSCO.com • www.rovSCO.com



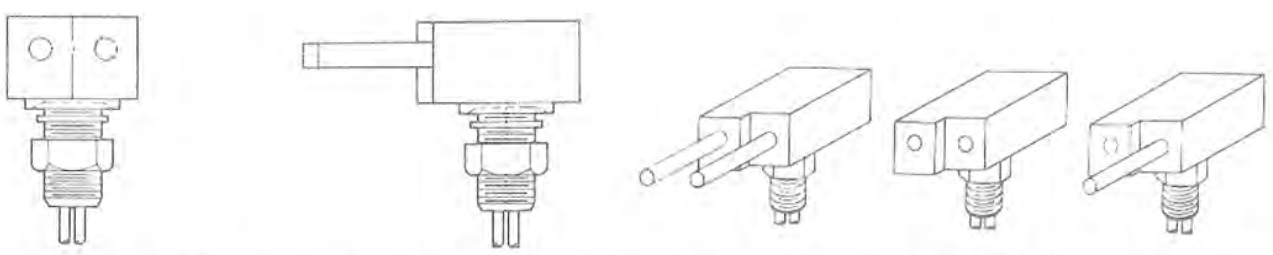
Singapore
ROVSCO ASIA Pte Ltd
 11 Changi South Street No.1, #01-03
 Singapore 486787
 T: (+65) 6546 6526
 E: sales@rovSCOasia.com • www.rovSCO.com

Connectors, Electrical



Series 59 Single Pin 90° Connectors

Model	No. Circuits	No. Pins/Socket	Max Volts	Circuits Per Pin	Amp Rating	Wire Size	Mates With -
59F2M or F-1	2	1	7.5	2	115	18	51F2F or M
59F2M or F-2	2	1	7.5	2	115	18	51F2F or M
59F2M or F-3	2	1	7.5	2	115	18	51F2F or M
59F2M or F-4	2	1	7.5	2	115	18	51F2F or M
59F2M or F-5	2	1	7.5	2	115	18	51F2F or M
59F2M or F-6	2	1	7.5	2	115	18	51F2F or M



Series 510 Two Pin Male/Female/Universal 90° Connector

Model	No. Circuits	No. Pins/Socket			Max. Volts	No. Circuits per Pin	Amp Rating	Wire Size	Mates With -
		M	F	U					
510E2M or F or U-4	2	1	1	1/1	230	1	15	16	52E2F or M or U-1
510E2M or F or U-5	2	1	1	1/1	230	1	15	16	53E2F or M or U-1
510E2M or F or U-6	2	1	1	1/1	230	1	15	16	52E2F or M or U-1
510F4M or F or U-4	4	2	2	1/1	115	2	7.5	18	52F2F or M or U-1
510F4M or F or U-5	4	2	2	1/1	115	2	7.5	18	52F2F or M or U-1
510F4M or F or U-6	4	2	2	1/1	115	2	7.5	18	52F4F or M or U-1

USA
ROVSCO, Inc.
 5263 Barker Cypress Road, Suite 600
 Houston, Texas 77084, USA
 T: +1 281 858 6333
 E: sales@rovSCO.com • www.rovSCO.com



Singapore
ROVSCO ASIA Pte Ltd
 11 Changi South Street No.1, #01-03
 Singapore 486787
 T: (+65) 6546 6526
 E: sales@rovSCOasia.com • www.rovSCO.com

Diver Video Cables

Rovsco stocks industry standard Diver Video Cables that provide highest quality video from subsea diver cameras. They are made to be rugged yet flexible to be used in some of the most demanding subsea applications. Our video cables contain a high quality coax with stranded inner conductors and extremely effective signal shield that ensures transmission of video free of any Electro Magnetic Interference (EMI). The cables contain necessary conductors for Camera Power, Camera Focus, Light Power, Light Dimmer, etc. The cable is designed to be strong with a very high break strength to ensure operation in some of the most demanding subsea diving operations. The outer sheath is made of heavy duty polyurethane to protect the cable when working around barnacles and subsea environment.

Diver Comms Cable

Rovsco stocks industry standard comms cable. Our stocked comms cable is designed with necessary conductors and shielding to send and receive noise free audio communication. The comms cable is strong and yet flexible to work in the most demanding environment subsea.

USA

ROVSCO, Inc.

5263 Barker Cypress Road, Suite 600

Houston, Texas 77084, USA

T: +1 281 858 6333

E: sales@rovSCO.com • www.rovSCO.com



Singapore

ROVSCO ASIA Pte Ltd

11 Changi South Street No.1, #01-03

Singapore 486787

T: (+65) 6546 6526

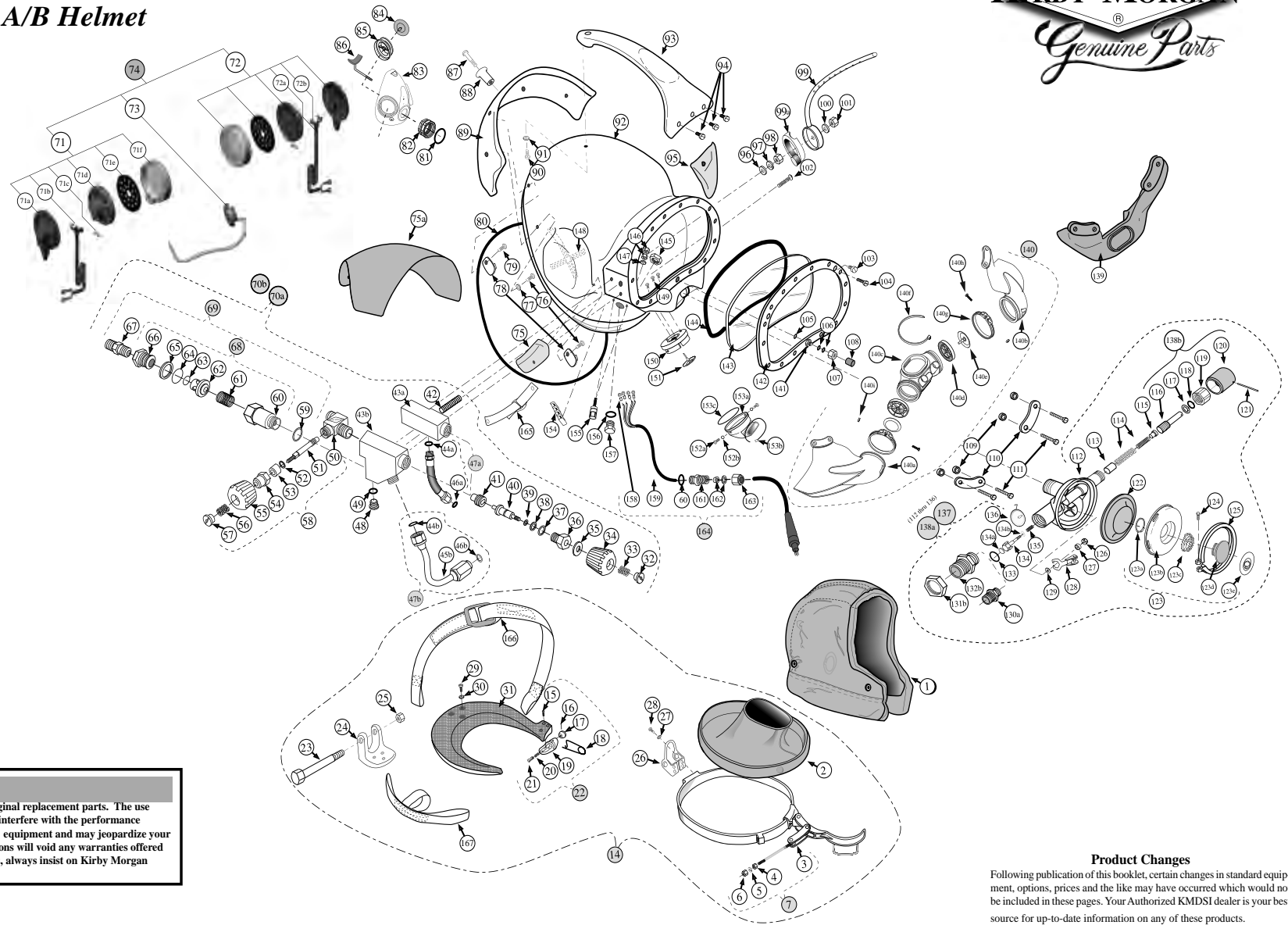
E: sales@rovSCOasia.com • www.rovSCO.com



Custom Designed by ROVSCO



SuperLite® 17 A/B Helmet



⚠ CAUTION
 Use only Kirby Morgan original replacement parts. The use of other manufacturer's parts will interfere with the performance characteristics of your life support equipment and may jeopardize your safety. Additionally, any substitutions will void any warranties offered by KMDSL. When ordering spares, always insist on Kirby Morgan original parts.

Product Changes
 Following publication of this booklet, certain changes in standard equipment, options, prices and the like may have occurred which would not be included in these pages. Your Authorized KMDSL dealer is your best source for up-to-date information on any of these products.
 © Kirby Morgan Dive Systems, Inc. reserves the right to change product specifications at any time without incurring obligations.



Kirby Morgan Dive Systems, Inc.® 1430 Jason Way, Santa Maria, CA 93455
 Phone: 805/928-7772 Fax: 805/928-0342
 www.KirbyMorgan.com e-mail: kmdsi@KirbyMorgan.com

© Copyright 2011 Kirby Morgan Dive Systems, Inc. All rights reserved. Document #111021003

USA
ROVSCO, Inc.
 5263 Barker Cypress Road, Suite 600
 Houston, Texas 77084, USA
 T: +1 281 858 6333 • E: sales@rovSCO.com • www.rovSCO.com



Singapore
ROVSCO ASIA Pte Ltd
 11 Changi South Street No.1, #01-03
 Singapore 486787
 T: (+65) 6546 6526 • E: sales@rovSCOasia.com • www.rovSCO.com



SuperLite® 17 A/B Helmet

Location #	Part #	Description	Location #	Part #	Description	Location #	Part #	Description	Location #	Part #	Description
1	510-521	Head Cushion	53	520-024	Packing	96	530-535	Washer	138a	505-027	Demand Reg. Assem. "B"
	510-523	Replacement Foam	54	550-091	Packing Nut	97	530-415	Washer	138b	505-028	Reg. Adjustment Knob Assem.
2	510-533	Drawstring Neck Dam	55	520-525	Flex Knob, Emergency	98	530-317	Nut	139	510-554	Whisker™, Rubber (Pre 2004)
3		Neck Clamp	56	535-802	Spring	99	545-016	Air Train	140	525-759	Quad-Valve™ Exhaust
		(Order Comp. see #7)	57	550-019	Locknut	99a	510-762	Air Train Gasket	140a	510-786	Starboard Whisker™
4	530-317	Nut	58	505-070	Emergency Valve Assembly	100	530-535	Washer	140b	510-787	Port Whisker™
5	530-415	Washer	59	510-483	O-ring	101	530-317	Nut	140c	510-760	Quad Valve Exhaust Main Body
6	530-320	Nut, Lock	60		Body	102	530-050	Screw	140d	520-200	Whisker™ Exhaust Valve Insert
7	505-055	Neck Clamp Assembly	61		Spring	103	530-052	Screw, Port Plug Screw	140e	510-776	Exhaust Valve
8-13	not used		62		Poppet	104	530-035	Screw	140f	520-042	Tie Wrap
14	505-008	Neck Clamp Yoke Assembly Comp.	63		O-ring	105	510-010	O-ring	140g	520-118	Tri/Quad Valve Whisker Clamp
15	530-066	Screw	64		O-ring	106	510-008	O-ring	140h	530-008	Brass Screw
16	530-601	Retaining Pin	65		Wiper	107	555-180	Packing Nut	140i	530-009	Brass Nut
17	550-255	Knob	66		Seat	108	550-062	Knob, Nose Block	141	550-116	Nose Block Guide
18	535-900	Safety Pin	67	555-117	Adapter, Brass, ¼" NPT/02	109	550-061	Spacer	142	560-070	Port Ret. Assembly
19	560-051	Latch Catch Body	68	555-195	One-Way Valve	110	540-015	Plate	143	520-004	Face Port
20	535-808	Spring	69	505-060	One-Way Valve Assem.	111	530-045	Screw	144	510-260	O-ring
21	550-257	Plunger	70a	505-022	"A" Side Block Assem. Complete	112	545-022	Regulator Body	145	550-040	Nut
22	505-010	Latch Catch Assem., Pull Pin	70b	505-024	"B" Side Block Assem. Complete	113	550-060	Piston	146	530-308	Nut
23	530-034	17B Hinge Bolt, Electropolished	71	515-005	Earphone, Right, 9"	114	535-807	Spring Set	147	530-525	Washer
24	560-026	Hinge	71a		Order Earphone Cover Set 510-842	115	550-059	Spacer	148	540-054	Earphone Retainer
25	530-028	Nut	71b	515-102	Communication Wire 9"	116	550-057	Shaft	149	530-032	Screw
26	540-157	Rear Hinge Tab, Electropolished	71c	530-098	Screw	117	520-032	Washer	150	550-063	Exhaust Body
27	530-406	Washer	71d	515-090	Earphone	118	510-011	O-ring	151	510-561	Exhaust Valve
28	530-025	Screw	71e	520-015	Protector, Earphone	119	550-055	Packing Nut	152	530-021	Screw
29	530-080	Screw	71f		Order Earphone Cover Set 510-842	120	550-053	Knob, Adjustment	152a	530-019	Screw, Quad Exhaust
30	530-530	Washer	72	515-006	Earphone, Left, 15.5"	121	530-601	Retaining Pin	152b	510-007	O-ring, Quad Exhaust Screw
31	520-117	Urethane Yoke	72a	515-101	Communication Wire 15.5"	122	510-553	Diaphragm	153a	560-530	Exhaust Cover, Quad Exhaust
	520-060	Fiberglass Yoke	72b	520-038	Tie-Wrap	123	545-018	Cover Assembly	153b	520-042	Tie Wrap, Quad Exhaust
32	550-019	Locknut	73	515-009	Microphone	123a	535-905	Retaining Clip	153c	510-033	O-ring, Quad Exhaust
33	535-802	Spring	74	515-030	Communications Set	123b	540-055	Cover	154	515-061	Terminal Block
34	520-524	Flex Knob, Steady Flow	75	560-023	Starboard Weight	123c	535-810	Spring, Purge Button	155	515-035	Communications Post
35	520-030	Washer	75a	520-054	Visor	123d	520-017	Purge Button	156	510-481	O-ring
36	550-020	Bonnet	76	530-070	Screw	123e	520-078	Purge Button Sticker	157	550-043	Plug
37	510-015	O-ring	77	530-540	Washer	124	530-030	Screw	158	515-049	Terminal
38	520-031	Washer	78	545-027	Snap Tab	125	545-020	Clamp	159	515-045	Waterproof Conn, Male
39	510-010	O-ring	79	530-078	Screw	126	530-303	Nut	160	510-481	O-ring
40	550-022	Valve Stem	80	510-446	O-ring	127	550-052	Spacer	161	555-175	Packing Gland
41	550-023	Seat Assembly	81	510-211	O-ring	128	545-038	Roller Lever	162	520-113	Ferrule Set
42	550-024	Stud	82	550-038	Nut, Regulator Mount	129	530-506	Washer	163	555-178	Packing Nut
43a	550-026	A Side Block	83	510-747	Mask, Oral/Nasal (silicone)	130a	550-046	Inlet Nipple "A"	164	505-047	W.P. Connector Assembly
43b	550-029	B Side Block	84	510-550	Valve, Oral/Nasal Intake	131b	550-050	Jam Nut "B"	165	505-130	Chin Strap
44a	510-011	O-ring	85	520-020	Body, Oral/Nasal Intake Valve	132b	550-048	Inlet Nipple "B"	166	505-134	Yoke Strap
44b	520-033	O-ring (teflon)	86	545-015	Nose Block device	133	510-014	O-ring	167	505-138	Strap Guide
45b	555-154	Bent Tube Assembly		510-575	Nose Block Pad	134	545-026	Inlet Valve		525-620	Tool Kit (not shown)
46a	510-010	O-ring	87	530-090	Alignment Screw	134a	510-580	Valve Seat			
46b	510-012	O-ring	88	550-339	Alignment Sleeve	134b	530-505	Washer			
47a	555-152	Reg. Hose Assem. w/O-rings	89	560-005	Rear Weight	135	535-804	Spring			
47b	555-155	Bent Tube Assem. w/O-rings	90	530-070	Screw	136	510-552	Exhaust Valve			
48	550-095	L.P. Plug, w/O-ring	91	530-540	Washer	137	505-026	Demand Reg. Assem. "A"			
49	310-003	O-ring	92	520-065	Helmet, Fiberglass						
50	550-140	Emergency Valve Body	93	560-014	Handle						
51	550-138	Stem	94	530-040	Screw						
52	540-095	Washer	95	560-019	Port Weight						

© Copyright 2011 Kirby Morgan Dive Systems, Inc. All rights reserved. Document #111021003



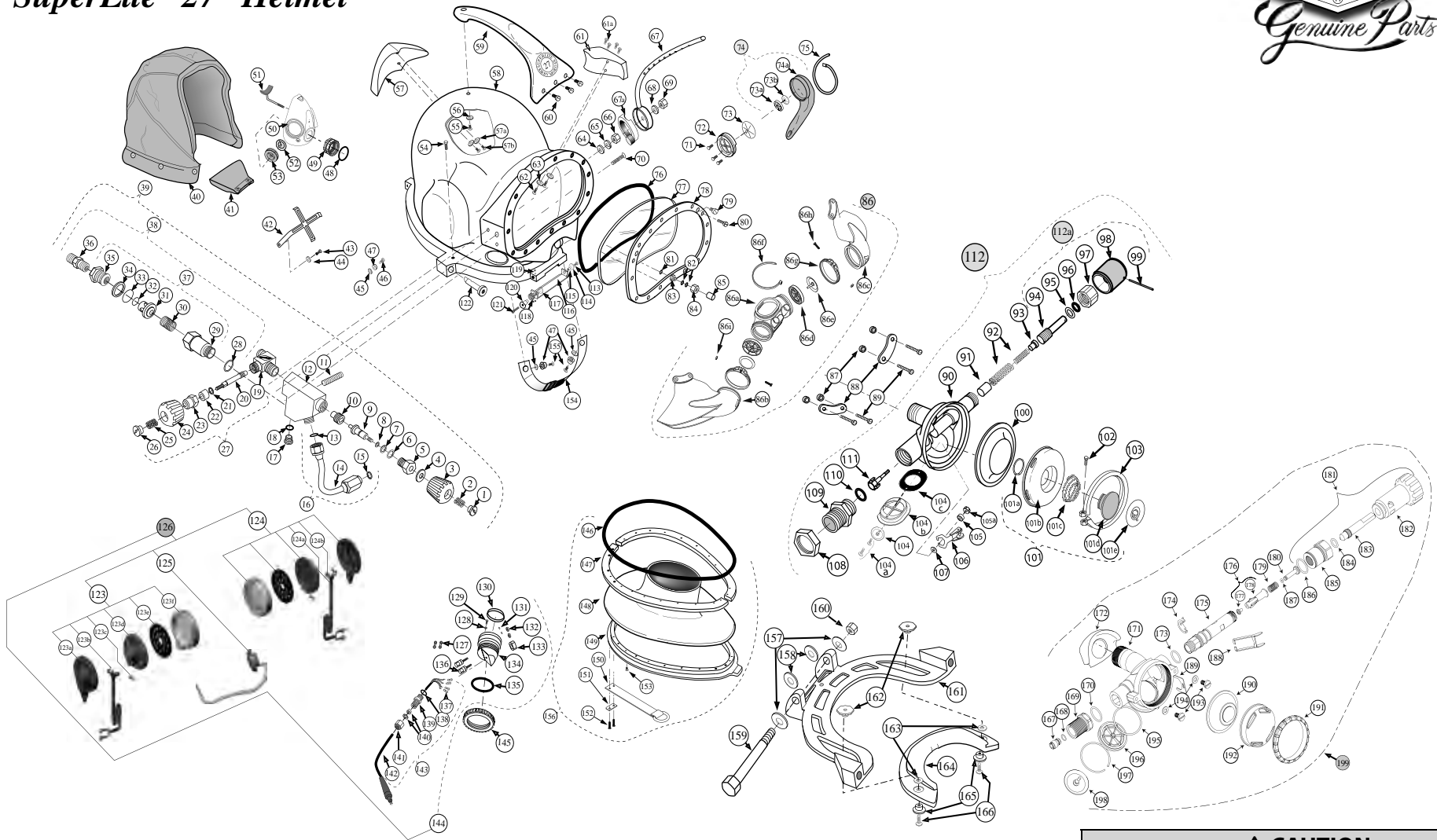
Kirby Morgan Dive Systems, Inc. 1430 Jason Way, Santa Maria, CA 93455
Phone: 805/928-7772 Fax: 805/928-0342
www.KirbyMorgan.com e-mail: kmdsi@KirbyMorgan.com

USA
ROVSCO, Inc.
 5263 Barker Cypress Road, Suite 600
 Houston, Texas 77084, USA
 T: +1 281 858 6333 • E: sales@rovSCO.com • www.rovSCO.com



Singapore
ROVSCO ASIA Pte Ltd
 11 Changi South Street No.1, #01-03
 Singapore 486787
 T: (+65) 6546 6526 • E: sales@rovSCOasia.com • www.rovSCO.com

SuperLite® 27® Helmet



Product Changes

Following publication of this booklet, certain changes in standard equipment, options, prices and the like may have occurred which would not be included in these pages. Your Authorized KMDSI dealer is your best source for up-to-date information on any of these products. © Kirby Morgan Dive Systems, Inc. reserves the right to change product specifications at any time without incurring obligations.

CAUTION

Use only Kirby Morgan original replacement parts. The use of other manufacturer's parts will interfere with the performance characteristics of your life support equipment and may jeopardize your safety. Additionally, any substitutions will void any warranties offered by KMDSI. When ordering spares, always insist on Kirby Morgan original parts.



Kirby Morgan Dive Systems, Inc.® 1430 Jason Way, Santa Maria, CA 93455
 Phone: 805/928-7772 Fax: 805/928-0342
 www.KirbyMorgan.com e-mail: kmdsi@KirbyMorgan.com

© Copyright 2011 Kirby Morgan Dive Systems, Inc. All rights reserved. Document #111021003

USA
ROVSCO, Inc.
 5263 Barker Cypress Road, Suite 600
 Houston, Texas 77084, USA
 T: +1 281 858 6333 • E: sales@rovSCO.com • www.rovSCO.com



Singapore
ROVSCO ASIA Pte Ltd
 11 Changi South Street No.1, #01-03
 Singapore 486787
 T: (+65) 6546 6526 • E: sales@rovSCOasia.com • www.rovSCO.com



SuperLite® 27® Helmet

Location #	Part #	Description
1	550-019	Locknut
2	535-802	Spring
3	520-524	Flex Knob, Steady Flow
4	520-030	Washer
5	550-020	Bonnet
6	510-015	O-Ring
7	520-031	Washer
8	510-010	O-Ring
9	550-022	Valve Stem
10	550-023	Seat Assembly
11	550-024	Stud
12	550-029	Side Block
13	520-033	O-Ring, Teflon
14	555-154	Bent tube Assembly
15	510-012	O-Ring
16	555-155	Bent Tube Assem. w/O-Rings
17	550-095	L. P. Plug, w/O-ring
18	310-003	O-Ring
19	550-140	Emergency Valve Body
20	550-138	Stem
21	540-095	Washer
22	520-024	Packing
23	550-091	Packing Nut
24	520-525	Flex Knob, Emergency
25	535-802	Spring
26	550-019	Locknut
27	505-070	Emergency Valve Assembly
28	510-483	O-Ring
29	Body	
30	Spring	
31	Poppet	For Replacement Parts
32	O-Ring	Order Kit
33	O-Ring	Order Kit
34	Wiper	#525-330
35	Seat	
36	555-117	Adapter, Brass, 1/4" NPT, 0,
37	555-195	One-Way Valve
38	505-060	One-Way Valve Assem.
39	505-024	Side Block Assem. Complete (B)
40	510-682	Head Cushion
	510-654	Head Cushion Bag
41	510-683	Chin Cushion
	510-639	Chin Cushion Bag
	510-672	Replacement Foam Kit
42	540-054	Earphone Retainer
43	530-018	Screw
44	530-527	Washer
45	530-519	Washer
46	530-018	Screw
47	530-702	Snap
48	510-490	O-Ring
49	550-081	Nut, Regulator Mount
50	510-747	Oral Nasal Mask, Silicone
	510-569	Oral Nasal Mask (small optional)
51	545-070	Nose Block Device
	510-575	Nose Pad
52	510-550	Valve, Oral Nasal
53	520-020	Valve Body
54	530-015	Screw
55	530-070	Screw
56	530-540	Washer
57	525-225	Diamond Weight kit, optional
57a	530-540	Washer
57b	530-062	Screw

Location #	Part #	Description
58	505-105	Helmet, Fiberglass w/Ring
59	560-106	Handle
60	530-045	Screw
61	560-081	Side Weight (Port)
61a	530-062	Screw
62	530-070	Screw
63	530-540	Washer
64	530-535	Washer
65	530-415	Washer
66	530-317	Nut
67	545-016	Air Train
67a	510-762	Air Train Gasket
68	530-535	Washer
69	530-317	Nut
70	530-050	Screw
71	530-032	Screw
72	550-354	Water Dump Body
73	510-557	Water Dump Valve
73a	820-120	Valve Body, Purge (included in #74)
73b	810-025	Valve Purge (included in #74)
74a	510-780	Water Purge Deflector (included in #74)
74	505-726	Water Purge Deflector Complete
75	520-042	Tie Wrap
76	510-260	O-Ring
77	520-004	Face Port (Lexan)
78	560-070	Port Retainer Assembly
79	530-052	Screw, Port Plug
80	530-035	Screw
81	510-010	O-Ring
82	510-008	O-Ring
83	550-116	Nose Block Guide
84	555-180	Packing Nut
85	550-062	Knob, Nose Block
86	525-755	Tri-Valve Exhaust Assy, 27
86a	510-759	Exhaust Main Body
86b	510-786	Starboard Whisker, 27
86c	510-787	Port Whisker, 27
86d	520-200	Whisker Exhaust Valve Insert
86e	510-776	Exhaust Valve
86f	520-042	Tie Wrap
86g	520-118	Tri/Quad Valve Whisker Clamp
86h	530-008	Brass Screw
86i	530-009	Brass Nut
87	550-061	Spacer
88	540-015	Plate
89	530-045	Screw
90	545-080	Regulator Body (SuperFlow 350)
91	550-060	Piston
92	535-807	Spring Set
93	550-059	Spacer
94	550-057	Shaft
95	520-032	Washer
96	510-011	O-Ring
97	550-055	Packing Nut
98	550-053	Knob, Adjustment
99	530-601	Retaining Pin
100	510-553	Diaphragm
101	545-018	Cover Assembly
101a	535-905	Retaining Clip
101b	540-055	Cover
101c	535-810	Spring, Purge Button
101d	520-017	Purge Button
101e	520-078	Purge Button Sticker
102	530-030	Screw

Location #	Part #	Description
103	545-020	Clamp
104	510-552	Exhaust Valve
104a	530-020	Screw
104b	540-122	Exhaust Flange, Chrome
104c	510-401	Gasket
105	550-052	Spacer
105a	530-303	Nut
106	545-038	Roller Lever
107	530-506	Washer
108	550-050	Jam Nut
109	550-048	Inlet Nipple
110	510-014	O-Ring
111	545-026	Inlet Valve
112	505-069	Demand Regulator Assem.
112a	505-028	Adjustment Knob Assem.
113	530-035	Screw
114	530-546	Washer
115	550-061	Spacer
116	540-086	Swing Catch (after 1994)
	525-106	Swing Catch Retro Fit Kit (pre 1994 upgrade)
117	520-167	Washer
118	535-825	Spring
119	530-032	Screw
120	550-122	Spring Spacer
121	530-045	Screw
122	505-110	Sealed Pull Pin
	525-210	Sealed Pull Pin Retro Fit Kit
123	515-018	Earphone, Right, 9"
123a		Order Earphone Cover Set 510-842
123b	515-102	Communication Wire 9"
123c	530-098	Screw
123d	515-090	Earphone
123e	520-015	Protector, Earphone
123f		Order Earphone Cover Set 510-842
124	515-019	Earphone, Left, 15.5"
124a	515-101	Communication Wire 15.5"
124b	520-038	Tie-Wrap
125	515-029	Microphone
126	515-033	Communications Set
127	515-055	Wiring Harness
128	330-035	Washer
129	330-030	Screw
130	510-630	Rubber Cover
131	530-525	Washer
132	530-308	Nut
133	550-040	Mount Nut
134	520-130	Comm Module/ Drilled For Posts
	520-132	Comm Module/ For WP Conn.
135	510-029	O-Ring
136	315-020	Communications Post
137	515-049	Terminal
138	510-481	O-Ring
139	555-175	Packing Gland
140	520-113	Ferrule Set
141	555-178	Packing Nut
142	515-045	Waterproof Conn, Male
143	505-047	W.P. Connector Assembly
144	515-023	Comm Assembly w/Posts
	515-024	Comm Assembly w/W.P. Conn.
145	320-026	Comm Mount Nut
146	510-450	O-Ring
147	540-105	Split Ring, (2 Required)

Location #	Part #	Description
148	510-504	Neck Dam, Neoprene
	510-500	Neck Dam, Latex optional
149	560-078	Stepped Ring
150	505-142	Pull Strap Assembly
151	540-115	Strap Plate
152	530-220	Screw
153	530-024	Screw
154	505-111	Chin Strap Assembly Purchase 525-716 Kit
155	530-031	Screw
156	505-100	Neck Ring Assembly, Complete
	505-095	N. R. Assem., Complete (Latex) optional
157	530-545	Washer
158	520-165	Washer
159	530-027	Hinge Bolt
160	530-028	SS Nut
161	560-111	Locking Collar
162	550-113	Mount Nut
163	530-547	Washer
164	520-156	Neck Pad w/#165 (2)
165	550-045	T-Washer
166	530-064	Screw
167	250-060	Adjustment Nipple
168	210-050	O-Ring
169	550-533	Bent Tube Adapter
170	510-017	O-Ring
171	545-570	S.S. Reg Body Assy.
172	510-768	Spacer for 27
173	510-015	O-Ring
174	520-023	Bearing Clip
175	550-517	Main Tube
176	205-015	Inlet Valve Assy.
177	210-045	Seat
178	220-050	Inlet Valve
179	235-015	Spring
180	220-030	Balance Spacer
181	505-562	Flex Knob Assy.
182	520-517	Flex Knob
183	550-523	Adjustment Shaft
184	510-012	O-Ring
185	550-526	Packing Nut
186	510-017	O-Ring
187	210-055	Balance O-Ring
188	540-545	Lever Arm
189	540-531	Lock Clip
190	205-010	Diaphragm Assy.
191	560-525	Cover Retaining Ring
192	210-043	Cover
193	530-052	Screw
194	530-527	Washer
195	510-019	O-Ring
196	520-022	Exhaust Valve Insert
197	540-012	Retainer Ring
198	510-776	Exhaust Valve
199	505-560	Stainless Steel Regulator Assy.
	525-620	Tool Kit (not shown)



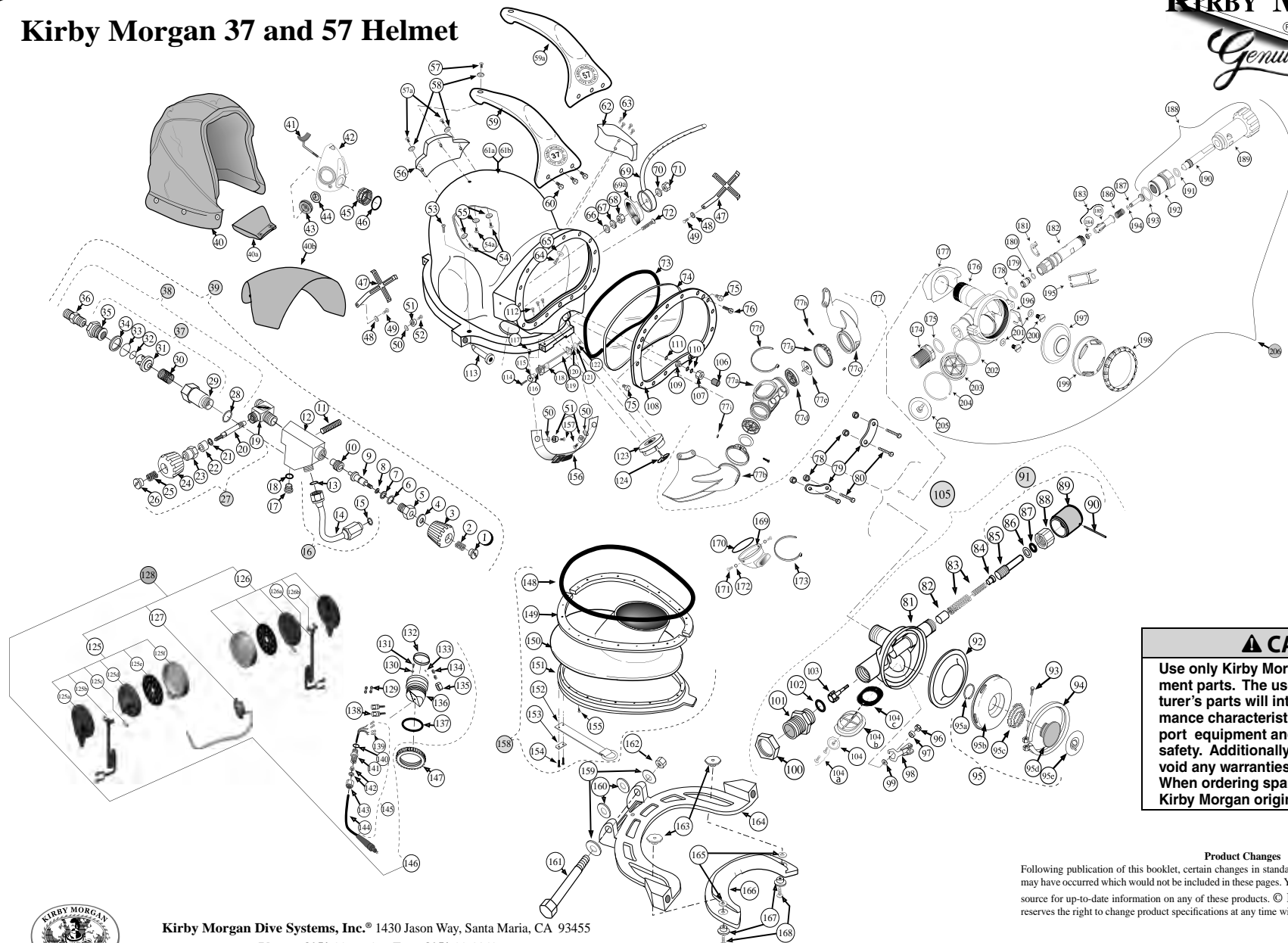
Kirby Morgan Dive Systems, Inc. 1430 Jason Way, Santa Maria, CA 93455
Phone: 805/928-7772 Fax: 805/928-0342
www.KirbyMorgan.com e-mail: kmdsi@KirbyMorgan.com

USA
ROVSCO, Inc.
 5263 Barker Cypress Road, Suite 600
 Houston, Texas 77084, USA
 T: +1 281 858 6333 • E: sales@rovSCO.com • www.rovSCO.com



Singapore
ROVSCO ASIA Pte Ltd
 11 Changi South Street No.1, #01-03
 Singapore 486787
 T: (+65) 6546 6526 • E: sales@rovSCOasia.com • www.rovSCO.com

Kirby Morgan 37 and 57 Helmet



CAUTION

Use only Kirby Morgan original replacement parts. The use of other manufacturer's parts will interfere with the performance characteristics of your life support equipment and may jeopardize your safety. Additionally, any substitutions will void any warranties offered by KMDSI. When ordering spares, always insist on Kirby Morgan original parts.

Product Changes

Following publication of this booklet, certain changes in standard equipment, options, prices and the like may have occurred which would not be included in these pages. Your Authorized KMDSI dealer is your best source for up-to-date information on any of these products. © Kirby Morgan Dive Systems, Inc. reserves the right to change product specifications at any time without incurring obligations.

Kirby Morgan Dive Systems, Inc. 1430 Jason Way, Santa Maria, CA 93455
 Phone: 805/928-7772 Fax: 805/928-0342
 www.KirbyMorgan.com e-mail: kmdsi@KirbyMorgan.com



USA
ROVSCO, Inc.
 5263 Barker Cypress Road, Suite 600
 Houston, Texas 77084, USA
 T: +1 281 858 6333 • E: sales@rovSCO.com • www.rovSCO.com



Singapore
ROVSCO ASIA Pte Ltd
 11 Changi South Street No.1, #01-03
 Singapore 486787
 T: (+65) 6546 6526 • E: sales@rovSCOasia.com • www.rovSCO.com



Kirby Morgan 37-57 Helmet

Location #	Part #	Description
1	550-019	Locknut
2	535-802	Spring
3	520-524	Flex Knob, Steady Flow
4	520-030	Washer
5	550-020	Bonnet
6	510-015	O-Ring
7	520-031	Washer
8	510-010	O-Ring
9	550-022	Valve Stem
10	550-023	Seat Assembly
11	550-024	Stud
12	550-029	Side Block
13	520-033	O-Ring, Teflon
14	555-154	Bent tube Assembly
15	510-012	O-Ring
16	555-155	Bent Tube Assem w/O-Rings
17	550-095	L. P. Plug, w/O-ring
18	310-003	O-Ring
19	550-140	Emergency Valve Body
20	550-138	Stem
21	540-095	Washer
22	520-024	Packing
23	550-091	Packing Nut
24	520-525	Flex Knob, Emergency
25	535-802	Spring
26	550-019	Locknut
27	505-070	Emergency Valve Assembly
28	510-483	O-Ring
29	Body	
30	Spring	For Replacement
31	Poppet	Parts Order
32	O-Ring	Order see
33	O-Ring	Order see
34	Wiper	Kit #525-530
35	Seat	
36	555-117	Adapter, Brass, 1/4" NPT, 0
37	555-195	One-Way Valve
38	505-060	One-Way Valve Assembly
39	505-024	Side Block Assembly (B)
40	510-682	Head Cushion
	510-654	Head Cushion Bag
40a	510-683	Chin Cushion
	510-639	Chin Cushion Bag
	510-672	Replacement Foam Kit
40b	520-054	Visor
41	545-015	Nose Block Device
	510-575	Nose Block Pad
42	510-747	Oral Nasal Mask
43	520-020	Valve Body
44	510-550	Valve, Oral Nasal
45	550-081	Nut, Regulator Mount
46	510-490	O-Ring
47	540-054	Earphone Retainer
48	530-527	Washer
49	530-018	Screw
50	530-519	Washer
51	530-702	Snap
52	530-018	Screw
53	530-015	Screw
54	530-078	Screw

Location #	Part #	Description
54a	530-070	Screw
55	530-540	Washer
56	560-125	Weight, Top
57	530-070	Screw
57a	530-078	Screw
58	530-527	Washer
59	560-194	Handle 37
59a	560-535	Handle 57
60	530-045	Screw
61a	505-107	Helmet Shell, 37 with Ring
61b	505-108	Helmet Shell, 57 with Ring
62	560-032	Weight, Port Side
63	530-062	Screw
64	530-070	Screw
65	530-540	Washer
66	530-535	Washer
67	530-415	Washer, Lock
68	530-317	Nut
69	545-016	Air Train
69a	510-762	Air Train Gasket
70	530-535	Washer
71	530-317	Nut
72	530-050	Screw
73	510-260	O-Ring
74	520-004	Face Port/ Lens
75	530-052	Screw
76	530-035	Screw
77	525-759	Quad-Valve Exhaust Kit
77a	510-760	Quad Valve Exhaust Main Body
77b	510-786	Starboard Whisker
77c	510-787	Port Whisker
77d	520-200	Whisker Exhaust Valve Insert
77e	510-776	Exhaust Valve
77f	520-042	Tie Wrap
77g	520-118	Tri/Quad Valve Whisker Clamp
77h	530-008	Brass Screw
77i	530-009	Brass Nut
78	550-061	Spacer
79	540-015	Plate
80	530-045	Screw
81	545-080	Regulator Body
82	550-060	Piston
83	535-807	Spring Set
84	550-059	Spacer
85	550-057	Shaft
86	520-032	Washer
87	510-011	O-Ring
88	550-055	Packing Nut
89	550-053	Knob, Adjustment
90	530-601	Retaining Pin
91	505-028	Reg. Adjustment Knob Assem
92	510-553	Diaphragm
93	530-030	Screw
94	545-020	Clamp
95	545-018	Cover Assembly
95a	535-905	Retaining Clip
95b	540-055	Cover
95c	535-810	Spring, Purge Button

Location #	Part #	Description
95d	520-017	Purge Button
95e	520-078	Purge Button Sticker
96	530-303	Nut
97	550-052	Spacer
98	545-038	Roller Lever
99	530-506	Washer
100	550-050	Jam Nut
101	550-048	Inlet Nipple
102	510-014	O-Ring
103	545-026	Inlet Valve
104	510-552	Exhaust Valve
104a	530-020	Screw
104b	540-122	Exhaust Flange, Chrome Order P/N 525-027 Flange Kit
104c	510-401	Gasket
105	505-069	Demand Reg. Assembly, 37
106	550-062	Knob, Nose Block
107	555-180	Packing Nut
108	560-070	Port Retainer, w/#109
109	550-116	Nose Block Guide
110	510-008	O-Ring
111	510-010	O-Ring
112	530-032	Screw
113	505-110	Sealed Pull Pin
114	530-045	Screw
115	550-122	Spring Spacer
116	535-825	Spring
117	530-032	Screw
118	520-167	Washer
119	540-086	Swing Tongue Catch
120	550-061	Spacer
121	530-546	Washer
122	530-035	Screw
123	550-063	Exhaust Body
124	510-561	Exhaust Valve/Water Dump
125	515-018	Earphone, Right, 9"
125a		Order Earphone Cover Set 510-842
125b	515-102	Communication Wire 9"
125c	530-098	Screw
125d	515-090	Earphone
125e	520-015	Protector, Earphone
125f		Order Earphone Cover Set 510-842
126	515-019	Earphone, Left, 15.5"
126a	515-101	Communication Wire 15.5"
126b	520-038	Tie-Wrap
127	515-029	Microphone
128	515-033	Communications Set
129	515-055	Wiring Harness
130	330-035	Washer
131	330-030	Screw
132	510-630	Rubber Cover
133	530-525	Washer

Location #	Part #	Description
134	530-308	Nut
135	550-040	Mount Nut
136	520-130	Comm Module drilled for Posts
	520-132	Comm Module drilled for W/P Conn/Male
137	510-029	O-Ring
138	315-020	Communications Post
139	515-049	Terminal
140	510-481	O-Ring
141	555-175	Packing Gland
142	520-113	Ferrule Set
143	555-178	Packing Nut
144	515-045	Waterproof Conn, Male
145	505-047	W.P. Connector Assembly
146	515-023	Comm Assembly w/Posts
	515-024	Comm Assembly w/W.P. Conn.
147	320-026	Comm Mount Nut
148	510-450	O-Ring
149	540-105	Split Ring, (2 Required)
150	510-628	Neck Dam, Neoprene (med)
	510-631	Neck Dam, Latex (med)
151	560-078	Stepped Ring
152	505-142	Pull Strap Assembly
153	540-115	Strap Plate
154	530-220	Screw
155	530-024	Screw
156	505-111	Chin Strap Assembly Purchase 525-716 Kit
157	530-031	Screw
158	505-119	Neck Ring Assembly (neop.)
159	530-545	Washer
160	520-165	Washer
161	530-027	Hinge Bolt
162	530-028	Nut
163	550-113	Adjustment Nut
164	560-111	Locking Collar
165	530-547	Washer
166	520-098	Neck Pad w/#168 (2)
167	550-045	T-Washer
168	530-064	Screw
169	560-530	Quad Exhaust Cover
170	510-033	O-Ring
171	530-019	Screw
172	510-007	O-Ring
173	520-042	Tie Wrap
174	550-533	Bent Tube Adapter
175	510-017	O-Ring
176	545-570	S.S. Reg Body Assy.
177	510-781	Spacer for 57 *see note 1
178	510-015	O-Ring
179	250-060	Adjustment Nipple

Location #	Part #	Description
180	210-050	O-Ring
181	520-023	Bearing Clip
182	550-517	Main Tube
183	205-015	Inlet Valve Assy.
184	210-045	Seat
185	220-050	Inlet Valve
186	235-015	Spring
187	220-030	Balance Spacer
188	505-562	Flex Knob Assy.
189	520-517	Flex Knob
190	550-523	Adjustment Shaft
191	510-012	O-Ring
192	550-526	Packing Nut
193	510-017	O-Ring
194	210-055	Balance O-Ring
195	540-545	Lever Arm
196	540-531	Lock Clip
197	205-010	Diaphragm Assy.
198	560-525	Cover Retaining Ring
199	210-043	Cover
200	530-052	Screw
201	530-527	Washer
202	510-019	O-Ring
203	520-022	Exhaust Valve Insert
204	540-012	Retainer Ring
205	510-776	Exhaust Valve
206	505-560	Stainless Steel Regulator Assy.

* Note: 1
Location # 179 P/N 510-781 Spacer, for KM 57 Helmet

CAUTION

Use only Kirby Morgan original replacement parts. The use of other manufacturer's parts will interfere with the performance characteristics of your life support equipment and may jeopardize your safety. Additionally, any substitutions will void any warranties offered by KMDSI. When ordering spares, always insist on Kirby Morgan original parts.



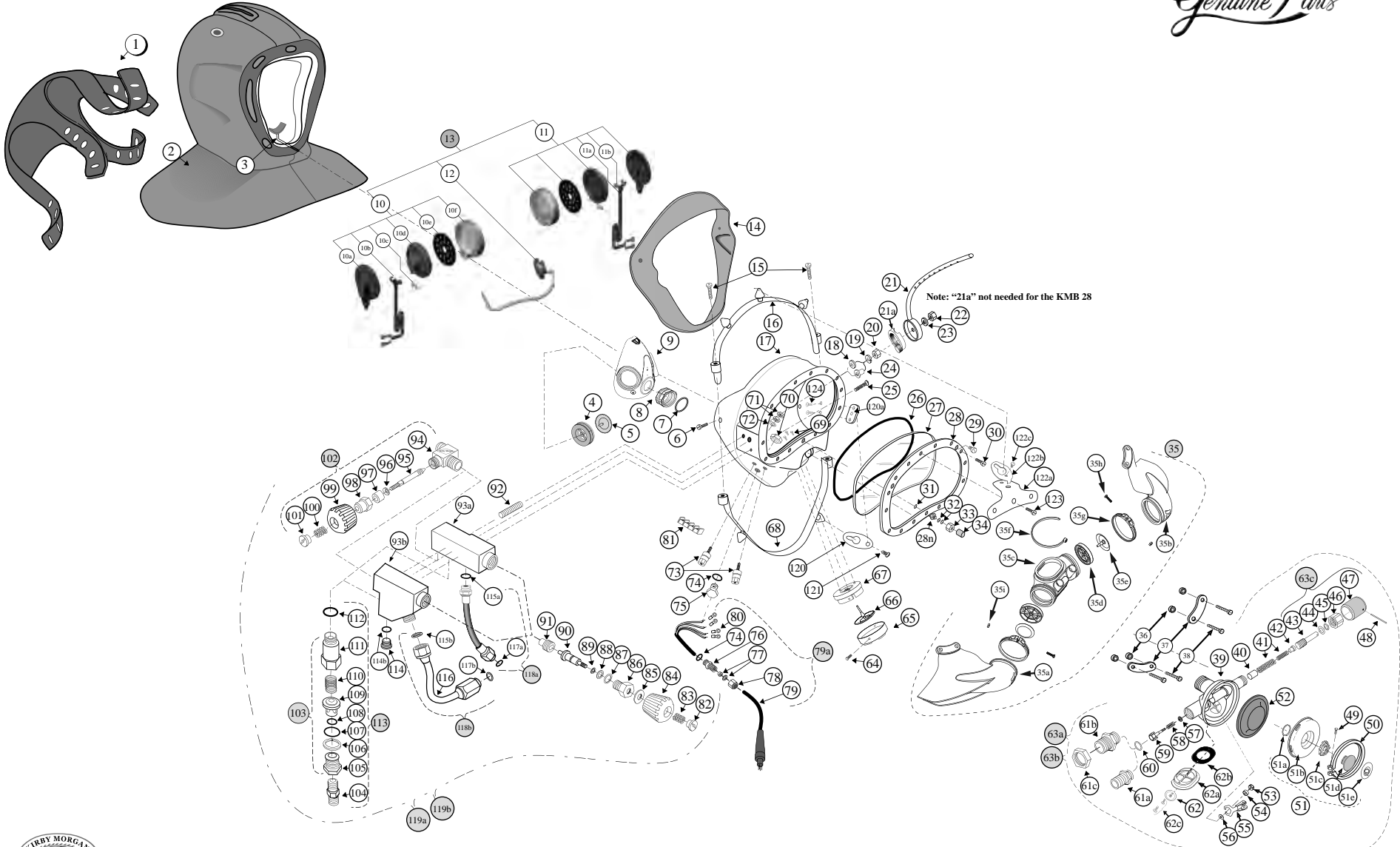
Kirby Morgan Dive Systems, Inc.® 1430 Jason Way, Santa Maria, CA 93455
 Phone: 805/928-7772 Fax: 805/928-0342
 www.KirbyMorgan.com e-mail: kmdsi@KirbyMorgan.com

USA
ROVSCO, Inc.
 5263 Barker Cypress Road, Suite 600
 Houston, Texas 77084, USA
 T: +1 281 858 6333 • E: sales@rovSCO.com • www.rovSCO.com



Singapore
ROVSCO ASIA Pte Ltd
 11 Changi South Street No.1, #01-03
 Singapore 486787
 T: (+65) 6546 6526 • E: sales@rovSCOasia.com • www.rovSCO.com

Kirby Morgan 18 A/B & 28 Band Mask



Kirby Morgan Dive Systems, Inc.® 1430 Jason Way, Santa Maria, CA 93455
 Phone: 805/928-7772 Fax: 805/928-0342
 www.KirbyMorgan.com e-mail: kmdsi@KirbyMorgan.com

© Copyright 2011 Kirby Morgan Dive Systems, Inc. All rights reserved. Document #111021003

USA
ROVSCO, Inc.
 5263 Barker Cypress Road, Suite 600
 Houston, Texas 77084, USA
 T: +1 281 858 6333 • E: sales@rovSCO.com • www.rovSCO.com



Singapore
ROVSCO ASIA Pte Ltd
 11 Changi South Street No.1, #01-03
 Singapore 486787
 T: (+65) 6546 6526 • E: sales@rovSCOasia.com • www.rovSCO.com



Kirby Morgan 18 A/B & 28 Band Mask

Location #	Part #	Description
1	510-509	Head Harness (Spider)
2	525-740	KMB Hood Assembly
3	545-015	Nose Block Device
	510-575	Nose Block Pad
4	520-020	Valve Body
5	510-550	Valve, Oral Nasal
6	530-060	Screw (18 only)
7*	510-490	O-Ring (18 only)
	510-211	O-Ring (28 & pre '99 18)
8*	550-081	Regulator Mount Nut (18 only)
	550-038	Regulator Mount Nut (28 & pre '99 18)
9	510-747	Oral Nasal Mask
10	515-005	Earphone, Right, 9"
10a		Order Earphone Cover Set 510-842
10b	515-102	Communication Wire 9"
10c	530-098	Screw
10d	515-090	Earphone
10e	520-015	Protector, Earphone
10f		Order Earphone Cover Set 510-842
11	515-006	Earphone, Left, 15.5"
11a	515-101	Communication Wire 15.5"
11b	520-038	Tie-Wrap
12	515-009	Microphone
13	515-030	Communications Set
14	520-051	Comfort Insert (18 only)
15	530-095	Screw
16	545-007	Top Band
17*	520-056	Mask, Fiberglass (18 only)
	520-055	Mask, Fiberglass (18 only, pre '99)
	520-125	Mask, Frame (28, 1")
	520-096	Mask, Frame (%)
18	530-535	Washer
19	530-415	Washer
20	530-317	Nut
21	545-016	Air Train
21a	510-762	Air Train Gasket KMB 18 ONLY
22	530-317	Nut
23	530-535	Washer
24	545-065	Standoff (28 only)
25	530-050	Screw
26	510-260	O-Ring
27	520-004	Face Port (18 only)
	520-128	Face Port (28 & pre 1979 18's only)
28	560-070	Port Retainer
28n	550-116	Nose Block Guide
29	530-052	Screw, Port Plug
30	530-035	Screw
31	510-010	O-Ring
32	510-008	O-Ring
33	555-180	Packing Nut
34	550-062	Knob, Nose Block
35	525-752	Tri-Valve™ Exhaust (35a-35i)
35a	510-786	Starboard Whisker™

Location #	Part #	Description
35b	510-787	Port Whisker™
35c	510-761	Tri-Valve Exhaust Main Body
35d	520-200	Whisker™ Exhaust Valve Insert
35e	510-776	Exhaust Valve
35f	520-042	Tie Wrap
35g	520-118	Tri/Quad Valve Whisker Clamp
35h	530-008	Brass Screw
35i	530-009	Brass Nut
36	550-061	Spacer
37	540-015	Plate
38	530-045	Screw
39*	545-080	Reg. Body, SuperFlow 350 (18 only)
	545-022	Regulator Body (28 pre 2004 & pre '99 18 only)
40	550-060	Piston
41	535-807	Spring Set
42	550-059	Spacer
43	550-057	Shaft
44	520-032	Washer
45	510-011	O-Ring
46	550-055	Packing Nut
47	550-053	Knob, Adjustment
48	530-601	Retaining Pin
49	530-030	Screw
50	545-020	Clamp
51	545-018	Cover Assembly
51a	535-905	Retaining Clip
51b	540-055	Cover
51c	535-810	Spring, Purge Button
51d	520-017	Purge Button
51e*	520-078	Purge Button Sticker (18 only)
	520-077	Purge Button Sticker (28 & pre '99 18)
52	510-553	Diaphragm
53	530-303	Nut
54	550-052	Spacer
55	545-038	Roller Lever
56	530-506	Washer
57*	530-505	Washer (pre '04 28 & pre '99 18)
58*	535-804	Spring (pre '04 28 & pre '99 18)
59	545-026	Inlet Valve
60	510-014	O-Ring
61a	550-046	Inlet Nipple, "A"
61b	550-048	Inlet Nipple, "B"
61c	550-050	Jam Nut, "B"
62	510-552	Exhaust Valve
62a	540-122	Exhaust Flange, Chrome
62b	510-401	Gasket
62c	530-020	Screw
63a	505-026	Demand Regulator Assem. 18 "A" (%)
63b*	505-027	Demand Reg Assem. "B" (28 pre '05 & pre '99 18) (%)
	505-069	Demand Reg Assem. 350 18 "B", 28 (1")
63c	505-028	Reg Adjustment Assem.
64	530-021	Screw

Location #	Part #	Description
65	545-024	Exhaust Cover (18)
	545-041	Exhaust Cover (28)
66	510-561	Main Exhaust Valve
67	550-063	Exhaust Body (18 only)
68	545-009	Bottom Band
69	530-035	Screw (18 only)
70	550-040	Nut
71	530-308	Hex Nut
72	530-525	Washer
73	515-035	Communications Post
74	510-481	O-Ring
75	550-043	Plug
76	555-175	Packing Gland
77	520-113	Ferrule Set
78	555-178	Packing Nut
79	515-045	W.P. Connector, Male (4 pin)
79a	505-047	W.P Connector Assem. complt.
80	515-049	Terminal
81	515-061	Terminal Block
82	550-019	Locknut
83	535-802	Spring
84	520-524	Flex Knob, Steady Flow
85	520-030	Washer
86	550-020	Bonnet
87	510-015	O-Ring
88	520-031	Washer
89	510-010	O-Ring
90	550-022	Valve Stem
91	550-023	Seat Assem.
92	550-024	Stud - Side Block
93a	550-026	Side Block - "A" N/A
93b	550-029	Side Block - "B"
94	550-140	Emergency Valve Body
95	550-138	Stem
96	540-095	Washer
97	520-024	Packing
98	550-091	Packing Nut
99	520-525	Flex Knob, Emergency
100	535-802	Spring
101	550-019	Locknut
102	550-070	Emergency Valve Assembly
103	555-195	One-Way Valve
104	555-117	Adapter, Brass, 1/4" NPT/0.
105		Seat
106		Wiper
107		O-Ring
108		O-Ring
109		Poppet
110		Spring
111		Body
112	510-483	O-Ring
113	505-060	One-Way Valve Assembly

Location #	Part #	Description
114	550-095	L.P. Plug, w/O-ring
114b	310-003	O-Ring
115a	510-011	O-Ring
115b	520-033	O-Ring, Teflon
116	555-154	Bent tube Assembly
117a	510-010	O-Ring
117b	510-012	O-Ring
118a	555-152	Regulator Hose w/O-Rings
118b	555-155	Bent Tube Assem. w/O-Rings
119a	505-022	"A" Side Block Assem. Complt.-N/A
119b	505-024	"B" Side Block Assem. Complt.
120	540-175	Bottom BandKeeper® Attachment Plate
120a	540-182	Bottom BandKeeper® Mount
121	530-073	Screw
122a	540-171	Top BandKeeper® Mount
122b	540-179	Top BandKeeper® Attachment Plate
122c	530-073	Screw
123	530-040	Screw
124	530-062	Screw
	525-620	Tool Kit (not shown)

* As of January 1, 1999, all KMB 18B's are manufactured with the large tube SuperFlow 350 Regulators, part number 505-069, and a new frame part number 520-056. The large tube regulator cannot be retrofitted into pre '99 KMB 18B's without the purchase of a new frame. Small tube fiberglass frames, Part number 520-055, are available as replacement parts (see 17)

Product Changes

Following publication of this booklet, certain changes in standard equipment, options, prices and the like may have occurred which would not be included in these pages. Your Authorized KMDSI dealer is your best source for up-to-date information on any of these products. © Kirby Morgan Dive Systems, Inc. reserves the right to change product specifications at any time without incurring obligations.

CAUTION

Use only Kirby Morgan original replacement parts. The use of other manufacturer's parts will interfere with the performance characteristics of your life support equipment and may jeopardize your safety. Additionally, any substitutions will void any warranties offered by KMDSI. When ordering spares, always insist on Kirby Morgan original parts.



Kirby Morgan Dive Systems, Inc.® 1430 Jason Way, Santa Maria, CA 93455
 Phone: 805/928-7772 Fax: 805/928-0342
 www.KirbyMorgan.com e-mail: kmdsi@KirbyMorgan.com

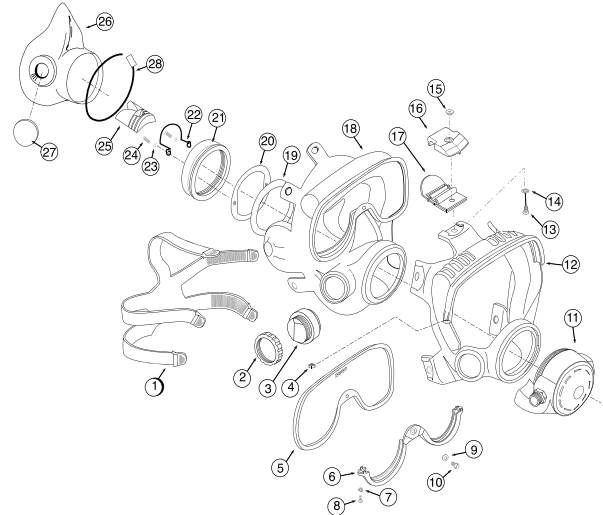
USA
ROVSCO, Inc.
 5263 Barker Cypress Road, Suite 600
 Houston, Texas 77084, USA
 T: +1 281 858 6333 • E: sales@rovSCO.com • www.rovSCO.com



Singapore
ROVSCO ASIA Pte Ltd
 11 Changi South Street No.1, #01-03
 Singapore 486787
 T: (+65) 6546 6526 • E: sales@rovSCOasia.com • www.rovSCO.com



Kirby Morgan EXO BR Balanced Regulator Full Face Mask



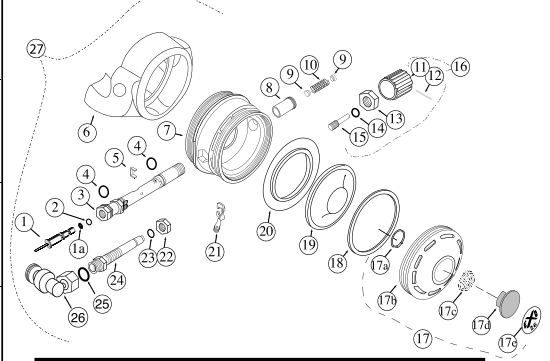
1	310-025	Spider
2	320-026	Comm Mount Nut
3	305-020	Comm Plug, w/ screws & Washers
4	330-105	Nut
5	365-002	Lens
6	320-028	Clamp, yellow
7	330-205	Washer
8	330-005	Screw
9	330-506	Washer
10	330-010	Screw
11	305-040	Regulator Assembly
12	320-016	Frame EXOskeleton, yellow
13	330-020	Screw
14	330-210	Washer
15	350-040	Nut
16	320-019	Buckle Cap, yellow
17	345-010	Buckle
18	310-001	Mask Seal
19	320-040	Reg. Mount Washer
20	340-015	Mount Ring
21	350-047	Mount Nut
22	330-900	Wire Retainer
23	330-515	Washer
24	330-040	Screw
25	310-357	Equalizer
26	310-055	Oral Nasal
27	320-001	Plug
28	320-048	Tie Wrap

Product Changes

Following publication of this booklet, certain changes in standard equipment, options, prices and the like may have occurred which would not be included in these pages. Your Authorized KMDSI dealer is your best source for up-to-date information on any of these products. © Kirby Morgan Dive Systems, Inc. reserves the right to change product specifications at any time without incurring obligations.

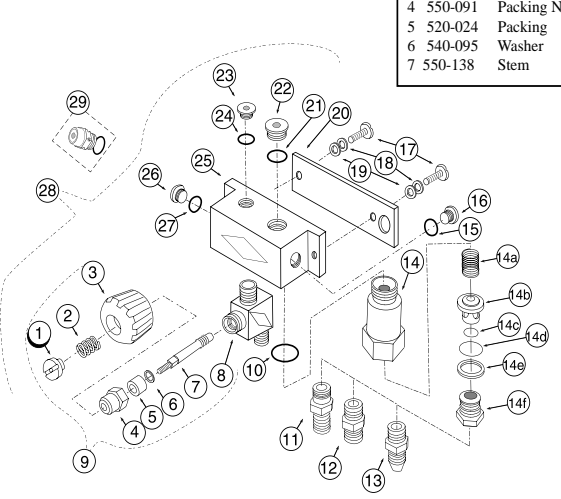
1	305-057	Inlet Valve Assembly, EXO-BR, Rex
1a	310-070	Seat
2	310-006	O-Ring
3	350-032	Main Tube
4	310-013	O-Ring
5	340-004	Horseshoe
6	310-020	Exhaust Whisker
7	320-041	Regulator Body
8	350-035	Sleeve
9	350-065	Spacer
10	535-910	Spring
11	320-035	Knob, Adjustment
12	530-601	Roll Pin
13	350-025	Packing Nut
14	510-011	O-Ring
15	350-052	Shaft, Adjustment
16	305-045	Reg Adjustment Assem.
17	305-060	Cover Assembly
17a	535-905	Retaining Clip
17b	350-075	Cover
17c	535-810	Spring, Purge Button
17d	520-017	Purge Button
17e	320-080	Purge Button Sticker
18	320-030	Washer
19	510-553	Diaphragm
20	310-065	Exhaust Valve
21	545-038	Roller Lever
22	350-020	Nut, Adjustment Lock
23	310-007	O-Ring
24	350-042	Nipple Tube
25	510-010	O-Ring
26	305-017	Hi Flow air inlet swivel. (w/25)
27	305-040	Regulator Assembly

Balanced Regulator Assembly



CAUTION
Use only Kirby Morgan original replacement parts. The use of other manufacturer's parts will interfere with the performance characteristics of your life support equipment and may jeopardize your safety. Additionally, any substitutions will void any warranties offered by KMDSI. When ordering spares, always insist on Kirby Morgan original parts.

Optional Manifold Block Assembly



1	550-019	Locknut
2	535-802	Spring
3	520-525	Flex Knob, Emergency
4	550-091	Packing Nut
5	520-024	Packing
6	540-095	Washer
7	550-138	Stem
8	550-140	Emergency Valve Body
9	505-070	Emergency Valve Assembly
10	510-483	O-Ring
11	355-205	Scuba Adapter
12	555-117	Adapter, Brass O ₂
13	355-225	Adapter, Brass #6 JIC
14	555-195	One Way Valve High Flow
14a		Spring
14b		Poppet
14c		O-Ring
14d		O-Ring
14e		Wiper
14f		Seat
15	310-003	O-Ring
16	550-095	Plug, small w/O-ring
17	530-070	Screw
18	330-405	Lock washer
19	530-527	Washer
20	340-011	Backing Plate
21	510-013	O-Ring
22	350-060	Plug, Large w/O-ring
23	550-095	Plug, Small w/O-ring
24	310-003	O-Ring
25	350-050	Manifold Block
26	550-095	Plug, Small w/O-ring
27	310-003	O-Ring
28	300-150	Manifold Assem. complete (O ₂)
	300-155	Manifold Assem. complete (#6 JIC)
	300-145	Manifold Assem. complete (scuba)
29	200-017	Over Pressure Relief Valve

1	320-026	Comm Mount Nut
2	305-020	Comm Module w/3 & 4
	320-023	Comm Module, drilled for posts
	320-024	Comm Module, drilled for W.P.C.
3	330-035	Washer
4	330-030	Screw
5	510-630	Rubber Cover
6	515-020	Microphone Assembly
7	515-055	Wiring Harness
8	315-016	Earphone Assembly Left
9	315-015	Earphone Assembly Right
10	515-045	Male W.P. Connector
11	315-005	Pigtail
12	350-070	Mount Nut, Pigtail
13	515-049	Terminal
14	315-020	Comm Posts, EXO
15	530-525	Washer
16	530-308	Hex Nut
17	315-210	Comm Module complete assembly w/comms & posts
	315-215	Comm Module complete Assem.. w/comms & Male W.P.Connector

Optional Communications Assemblies



Kirby Morgan Dive Systems, Inc.® 1430 Jason Way, Santa Maria, CA 93455
Phone: 805/928-7772 Fax: 805/928-0342
www.KirbyMorgan.com e-mail: kmdsi@KirbyMorgan.com

© Copyright 2011 Kirby Morgan Dive Systems, Inc. All rights reserved. Document #11021003

USA
ROVSCO, Inc.
5263 Barker Cypress Road, Suite 600
Houston, Texas 77084, USA
T: +1 281 858 6333 • E: sales@rovSCO.com • www.rovSCO.com



Singapore
ROVSCO ASIA Pte Ltd
11 Changi South Street No.1, #01-03
Singapore 486787
T: (+65) 6546 6526 • E: sales@rovSCOasia.com • www.rovSCO.com

USA

ROVSCO, Inc.

5263 Barker Cypress Road, Suite 600

Houston, Texas 77084, USA

T: +1 281 858 6333

E: sales@rovSCO.com • www.ROVSCO.com



SINGAPORE

ROVSCO ASIA Pte Ltd

11 Changi South Street No.1, #01-03

Singapore 486787

T: (+65) 6546 6526

E: sales@rovSCOasia.com • www.ROVSCO.com