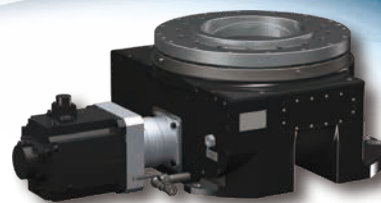


HorizonDrive SH500A



Product Specifications

Model		SH500A
Output table diameter	mm	Φ 470
Output hollow diameter	mm	Φ 170
Allowable payload [Allowable thrust]	kg [N]	5,000 [49,000]
Allowable moment load	N · m	12,140
Gear ratio		168.75
Maximum rotational frequency [Allowable output rotational frequency]	min ⁻¹	20 (120° /sec)
Rated output rotational frequency	min ⁻¹	15
Repeatability	mm	± 0.075 (R = 500mm)
Rated torque	N · m	4,820
Maximum allowable instantaneous torque	N · m	15,810
Allowable start/stop torque	N · m	7,900
Internal moment of inertia at the input shaft	kg · m ²	6.51 × 10 ⁻⁴
Recommended motor capacity	kW	5
Paint color		N1.5 (Black)
Product weight	kg	380
Rated lifetime	h	6,000

Allowable Moment Diagram

