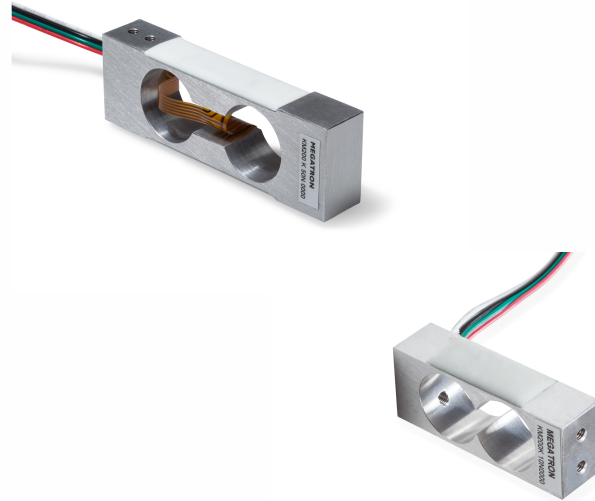
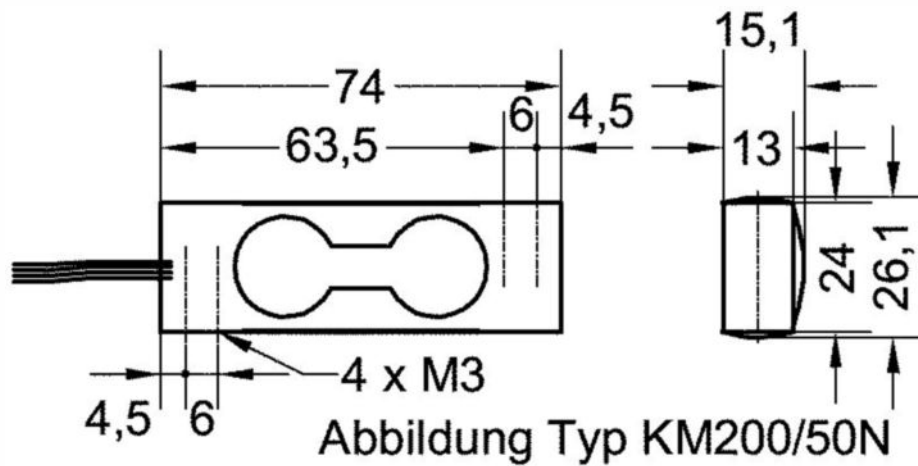


Series KM200

- Capacity from 0...10N to 0...50N
- Calibration either in tension or compression
- Loadcell in aluminium
- Compact design
- Cost-optimized sensor element for OEM applications
- Very small off center load error (typ. 0,02%/mm)



Dimensional Drawing



Series KM200

Technical Data		
Capacity (0 to ...)	10 N	50 N
Operating Overload	150 % F.S.	
Safe Overload	200 % F.S.	
Ultimate Overload	> 300 % F.S.	
Rated Output	0,60 mV/V	2 mV/V
Rated Output Tolerance	10 % F.S.	10 % F.S.
Zero Balance	5 % F.S.	5 % F.S.
Non-Linearity	0,01 % F.S.	
Hysteresis	0,01 % F.S.	
Creep (30 min.)	0,1 % F.S.	
Total Error *	0,15 % F.S.	0,1 % F.S.
Non-Repeatability	0,05 % F.S.	
Temp.Effect on Zero	0,2 % F.S.	0,1 % F.S.
Temp.Effect on Output	0,8 % F.S.	0,1 % F.S.
Dynamic Load Capacity	70 % F.S.	70 % F.S.
Fullscale Deflection	0,2 mm	
Limiting Lateral Load	20 % F.S.	
Loading Cycles	> 10 ⁶ (typ. values within nominal load, according to application)	
Legend:	*) Hysteresis included	
	All above values in %F.S. <= ± values	
	Measurement report not included	

Mechanical Data	
Measuring Method	Foil Strain Gage Full Bridge
Material Loadcell	Aluminium Alloy

Ambient Conditions	10 N	50 N
Compensated Temperature	-0 ... +60° C	0 ... +55° C
Operating Temperature	-10 ... +60° C	0 ... +70° C
Storage Temperature	-10 ... +85° C	-10 ... +80° C
Protection Class	IP 65	

Electrical Data	10 N	50 N
Input Impedance	350 ± 10 Ω	350 ± 50 Ω
Output Impedance	350 ± 10 Ω	350 ± 50 Ω
Output Impedance	> 1000 MΩ	
Recommended Excitation	10 VDC typ. / 15 VDC max.	
Cable Size	4-wire, ribbon cable, 10 cm	

Series KM200

Electrical Connection

Wiring	
red	Excitation +
black	Excitation -
white	Signal +
green	Signal -

Ordering Code

Series	KM200			
Capacity		10N		
		50N		
Connection			K	
Amplifier				0000

Accessories

External Amplifiers

- EMA3-DMS / EMA3-2DMS
- IPG-DMS / IPG-2DMS
- IMA2-DMS

Displays

- Modig

short-term stock types can be found on: <http://www.megatron.de/en/stocklists/load-cells/lagerliste.html>

bold print = standard option

(*) = on request available for projects

19.02.2015