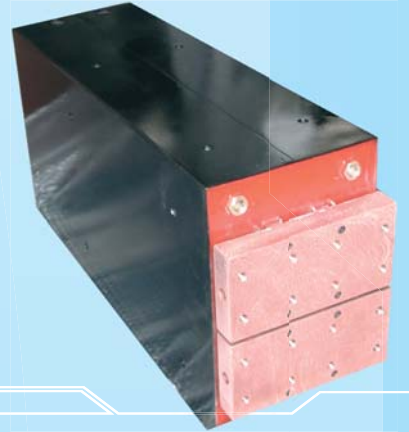


# WELDING TRANSFORMERS

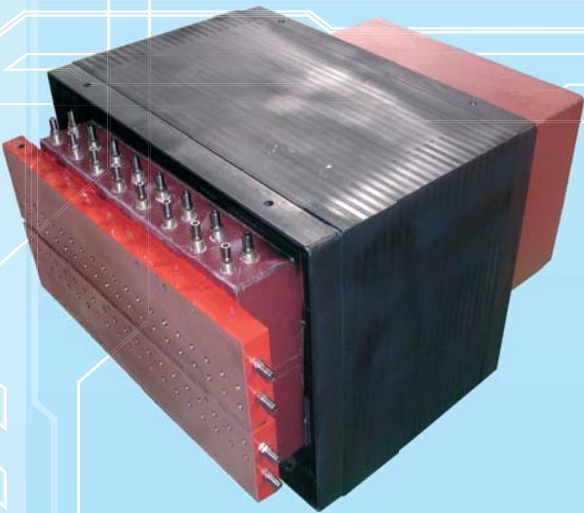
Single Phase: Spot - Seam

TECHNOLOGY

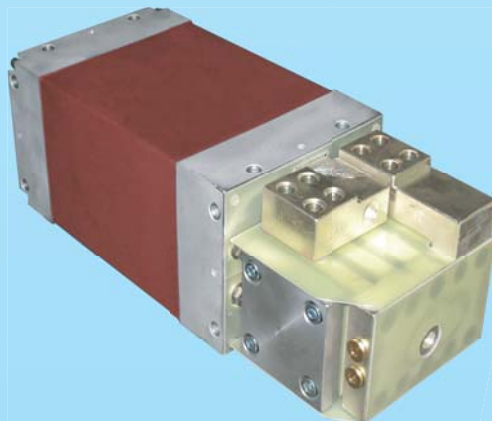


RELIABLE

CUSTOMIZED



INNOVATION



Inverter: Spot - Seam

TYPE	PRIMARY VOLTAGE	RATED POWER	SECONDARY PARALLELED	MAX SECONDARY CURRENT
------	-----------------	-------------	----------------------	-----------------------

### SINGLE-PHASE TRANSFORMERS

TSM 3	400 V 50/60 Hz	2,1 KVA 50%	1 - 1.33 - 2 Volt	3 KA
TSM 25	400 V 50/60 Hz	45 KVA 50%	2.2 - 2.94 - 4.4 Volt	28 KA
TSM 40	400 V 50/60 Hz	70 KVA 50%	2.96 - 4.04 - 5.93 Volt	33 KA
TSM 60	400 V 50/60 Hz	110 KVA 50%	3.95 - 5.27 - 7.9 Volt	39 KA
TSM 77	400 V 50/60 Hz	140 KVA 50%	4.95 - 6.6 - 10 Volt	39 KA
TSM 88	400 V 50/60 Hz	190 KVA 50%	5.9 - 7.8 - 11.8 Volt	45 KA
TSR 01/276	400 V 50/60 Hz	120 KVA 50%	3.16 - 4.22 - 6.33 Volt	53 KA
TSR 01/276 S	400 V 50/60 Hz	170 KVA 50%	4 - 4.5 - 5 - 5.5 Volt	60 KA
TSR 1200	400 V 50/60 Hz	1200 KVA 50%	14 - 16 Volt	118 KA
TR 4013	400 V 50/60 Hz	13 KVA 50%	3.8 Volt	5 KA
TR 4038	400 V 50/60 Hz	38 KVA 50%	7 Volt	7.6 KA
TR 4043	400 V 50/60 Hz	43 KVA 50%	9 - 9.7 - 10.5 Volt	7 KA
TR 4045	400 V 50/60 Hz	45 KVA 50%	7.6 Volt	8 KA
TR 4045 Slim	400 V 50/60 Hz	45 KVA 50%	6 Volt	10 KA
TR 4060	400 V 50/60 Hz	60 KVA 50%	5.7 - 6.7 Volt	15 KA
TR 40135	400 V 50/60 Hz	135 KVA 50%	10.0 - 8.6 Volt	19 KA
TR 40200	400 V 50/60 Hz	200 KVA 50%	7.6 - 9.3 - 11.1 Volt	37 KA
TR 40240	400 V 50/60 Hz	240 KVA 50%	4 - 4.5 - 5.5 - 6 Volt	84 KA
TRM 15	400 V 50/60 Hz	15 KVA 50%	1.7 - 2.1 - 2.5 Volt	12.5 KA
TC 60 M	400 V 50/60 Hz	80 KVA 50%	5 - 6.2 - 7.4 Volt	22 KA
TC 75 M	400 V 50/60 Hz	150 KVA 50%	6 - 7.5 - 8.5 - 10.5 Volt	34 KA

### INVERTER TRANSFORMERS

TYPE	PRIMARY VOLTAGE	RATED POWER	SECONDARY VOLTAGES	SECONDARY CURRENT	MAX CURRENT
MFT40.0.G / 4	500 V 1000 Hz	40 KVA 50%	4.5 - 5.8 - 6.9 - 8.9 Volt	6.5 KA 50%	60 KA
MFT100.0.G	500 V 1000 Hz	100 KVA 50%	9.1 Volt	13.5 KA 50%	120 KA
MFT100.0.G / 4	500 V 1000 Hz	100 KVA 50%	9.1-10.2-11.7-13.1 Volt	11 KA 50%	180 KA
MFT120.0.G / R	500 V 1000 Hz	80 KVA 50%	6 - 7 - 8 Volt	10.2 KA 50% Seam	110 KA
MFT130.0.G / 4	500 V 1000 Hz	130 KVA 50%	7 - 8 - 9 - 10 Volt	13 KA 50%	180 KA
MFT250.0.G / w	500 V 1000 Hz	180 KVA 50%	10.2-11.8-13.2-14.2 Volt	25 KA 50%	180 KA
MFT180.0.G-6/sc	500 V 1000 Hz	130 KVA 100%	8.5 - 9.6 - 10.8-11.2 Volt	20 KA 100% Seam	180 KA
MFT300.0.G / 4	500 V 1000 Hz	175 KVA 100%	7 - 8 - 9 - 10 Volt	35 KA 100% Seam	120 KA
MFT25 / 5000	500 V 2 to 5 Khz	25 KVA 20%	11.5 Volt	1 KA 50%	16 KA

**SAFCO** Systems s.r.l.®

Via Isonzo, 17/b - 20090 Cesano Boscone (MI) - ITALY - Phone +39 02 4504433 - +39 02 4504435  
Fax +39 02 4504321 E-mail: info@safcosys.it Web Site: www.safcosys.it

