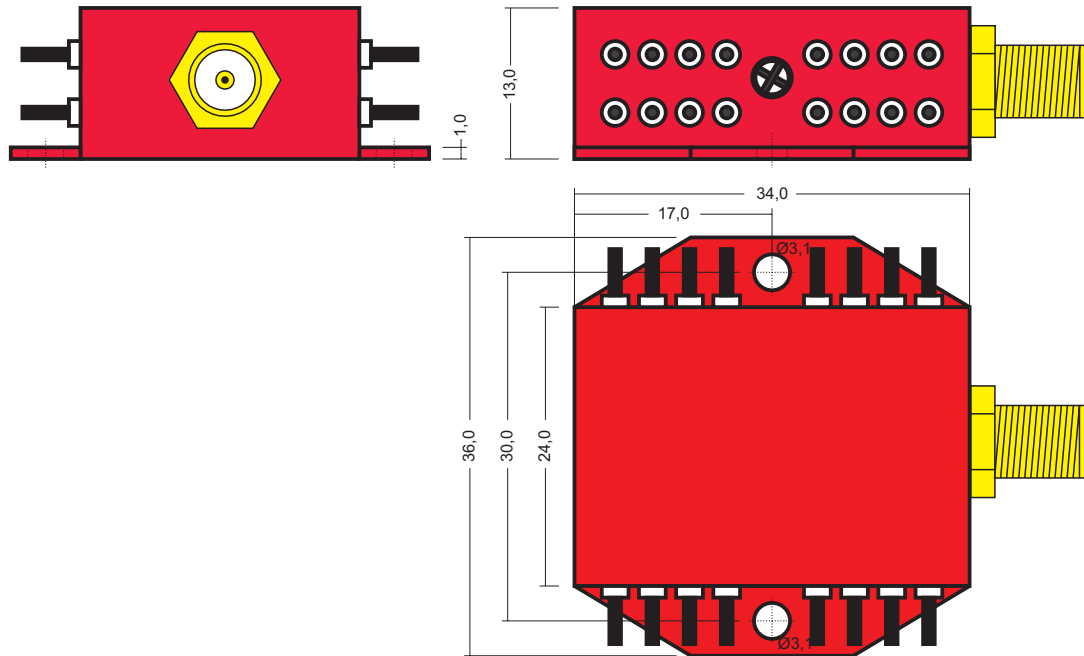
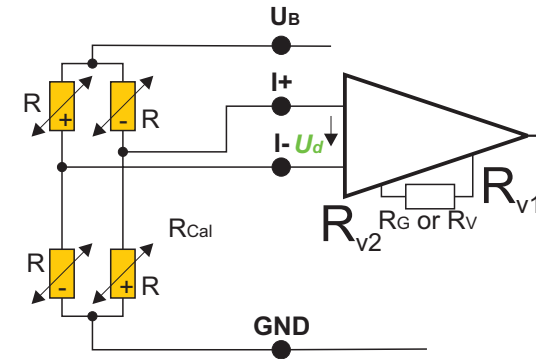


# Sensor Signal Amplifier Type 4B



Weight: about 12g



## 1 Channel Radio Sensortelemetry transmitter

For strain gage, PT100, Thermocouple

Sensitivity: 0,02 to 20 mV/V

Bandwidth 10 Hz / 0 Hz to 1 kHz

Brigde supply: 3 V

Strain gage: 350  $\Omega$

Transmission: Radio Sensortelemetry PCM

Integrated filter

Resolution: 14 Bit (16 Bit)

Drift zero: 0,02 (0,01, 0,005 option)

Supply: 3,3 to 12 V, 50 mA

Remote range control, auto zero (option)

Environmental temperature: -25 to +85°C (120°C)

Max load: 1 000 g (depends on fixing)

Type: SV\_4b\_<bandwidth>\_<accuracy>\_<temp>\_<mod>\_F

1 kHz	0,02	85	PCM12
	0,01	120	PCM16
	0,005		