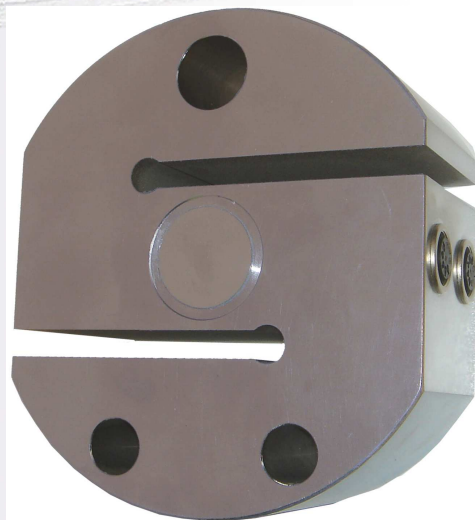


## S Type Load Cells 6 t, 12 t, 20 t, 30 t



**Griffith Elder and Company Ltd**  
1 Oaklands Park  
Bury St Edmunds  
Suffolk  
IP33 2RW  
United Kingdom

Telephone: +44 1284 763616  
Fax: +44 1284 700822  
Email: [sales@griffith-elder.com](mailto:sales@griffith-elder.com)  
Internet: [www.griffith-elder.com](http://www.griffith-elder.com)

<b>Model</b>	ST: S type
<b>Capacity</b>	6T: 12 T: 20T: 30T
<b>Material</b>	C: Carbon Alloy Steel S: Stainless Steel 17-4 ph
<b>Type</b>	A: Analogue D: Digital
<b>Temperature Range</b>	-40 to +70°C
<b>Safe Overload</b>	150%
<b>Maximum Overload</b>	300%
<b>Cable</b>	A: 10 metre screened (33 feet) D: Easylock Connector (IP68)
<b>Ingress Protection</b>	Sealed to IP68
<b>Excitation</b>	
<b>Recommended</b>	10V to 12V dc
<b>Maximum</b>	15V
<b>Output at rated load</b>	A: 2 mV/V $\pm$ 0.1% D: Weightel digital Protocol
<b>Accuracy</b>	Plus or minus 0.01 %

**ST-6T-CA**  
**ST-6T-SA**  
**ST-6T-CD**

**ST-12T-CA**  
**ST-12T-SA**  
**ST-12T-CD**

**ST-20T-CA**  
**ST-20T-SA**  
**ST-20T-CD**

**ST-30T-CA**  
**ST-30T-SA**  
**ST-30T-CD**

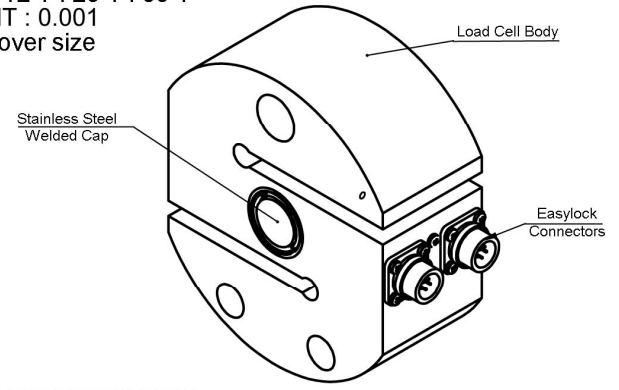
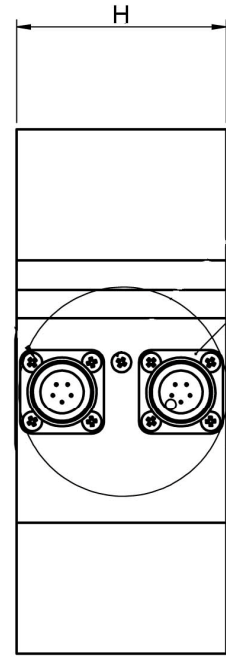
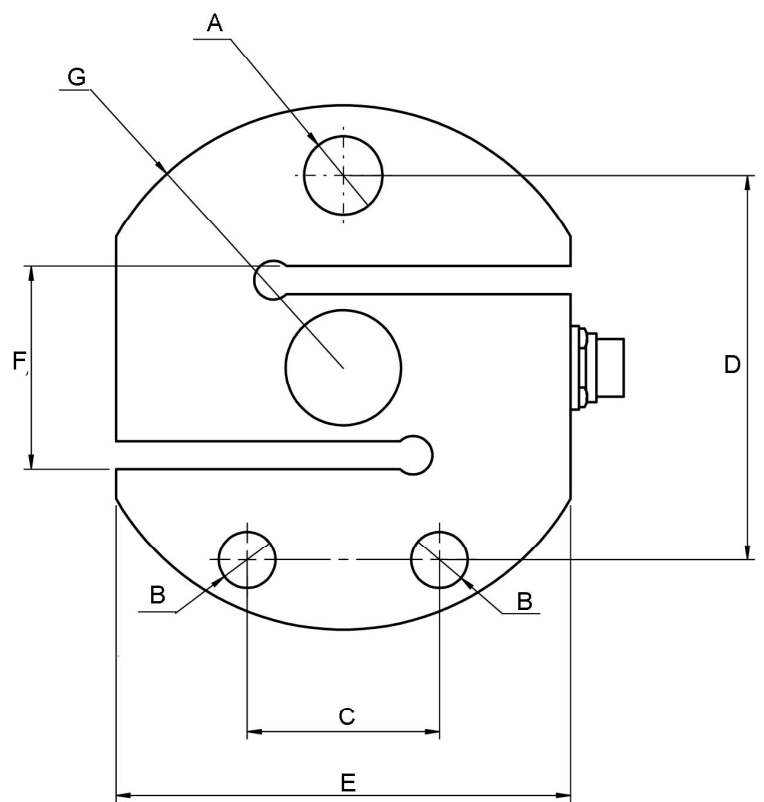
Digital Load Cells use the Weightel™ Plug-and-Weigh™ Technology for ease of installation and maximum accuracy. They are factory calibrated.

		6 T	12 T	20 T	30 T
A	∅ mm	22.4	22.4	38.1	50.2
B	∅ mm	16.2	16.2	24.5	30.2
C	mm	55.0	55.0	70.0	90.0
D	mm	110.0	110.0	125.0	176.0
E	mm	130.0	130.0	150.0	200.0
F	mm	58.0	58.0	62.0	78.0
G	radius mm	75.0	75.0	89.0	125.0
H	mm	60.0	60.0	65.0	70.0

**SPECIFICATION:**  
 SAFE OVERLOAD 150%  
 ULTIMATE OVERLOAD 300%  
 OPERATING TEMPERATURE -40 TO +70°C  
 RECOMMENDED EXCITATION 8 TO 12 V  
 MAXIMUM EXCITATION 15 V  
 PROTECTION CLASS IP68

**WEIGHTEL SETTINGS-**  
 UNITS : TONNES  
 SIZE : 6 T : 12 T : 20 T : 30 T  
 INCREMENT : 0.001  
 MAX : 0.01 over size  
 ZERO : ON

GRIFFITH ELDER WEIGHTEL TECHNOLOGY  
 \*\*SEE WEIGHTEL WIRING DIAGRAM\*\*

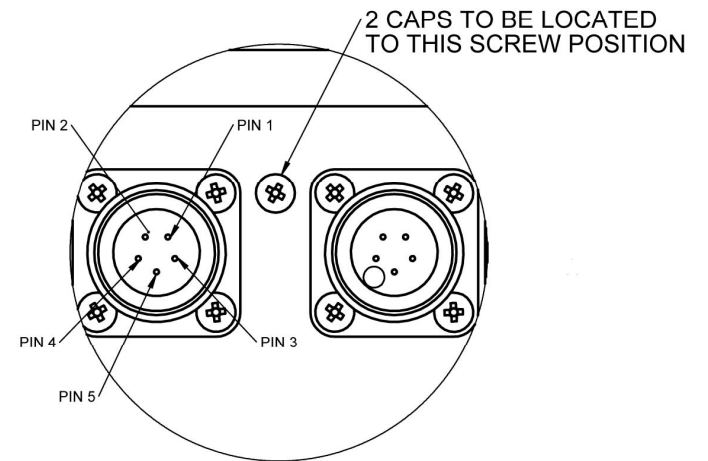


CONNECTOR / WEIGHTEL WIRING:

28-0216 FEMALE CONNECTOR	92-0092 WEIGHTEL PSU PCB
PIN 1	V+ PAD 1
PIN 2	0V PAD 2
PIN 3	DATA 'A' PAD 3
PIN 4	DATA 'B' PAD 4
PIN 5	SCREEN

\*\*\*IMPORTANT PIN 5 SCREEN ON BOTH CONNECTORS MUST BE WIRED TOGETHER\*\*\*

Easylock Connectors



Connector Detail

<b>Griffith Elder &amp; Co Ltd</b> Rougham Hill Bury St Edmunds Suffolk IP33 2RU United Kingdom Tel: +44 (1284) 763616 Fax: +44 (1284) 700822 Email: info@griffith-elder.com	UNSPECIFIED TOLERANCES:	COMMENTS:	MATERIAL:	ALLOY STEEL	PART NO.:		
	2DP:	± 0.25mm		WEIGHT:	Gramms	TITLE:	S-Type family Load Cell Digital IP68
	1DP:	± 0.50mm		FINISH:	Stainless Steel or Carbon Alloy	SCALE:	1:2
	ANGULAR:	± 0.5°		REVISION:		SHEET NO.:	1