

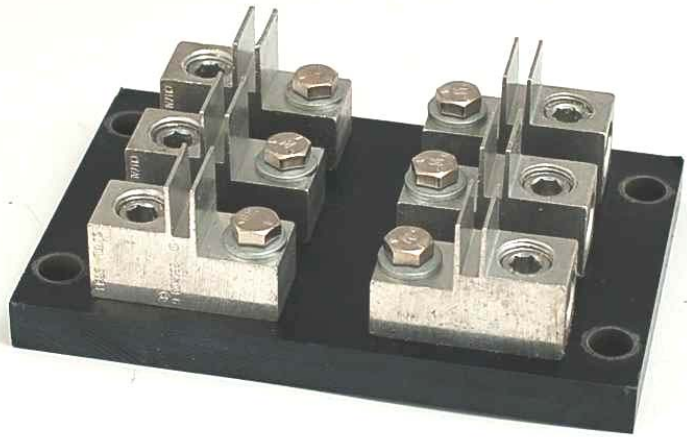
Product Data Sheet



T200AXB

Replace "X" with 1 or 3 for number of poles

Class T Fuse Holder 200 Amps, 300 Volts AC/DC



Wire Range:

250 kcmil - #6 AWG CU

250 kcmil - #6 AWG AL

Holds fuse size 1 1/16" diameter X 2 7/16"

Commonly used fuses in this holder: A3T, JJN, JLLN

[See table below for wire sizes.](#)

Electrical Ratings:

- 101 - 200A max (amperage rating based on maximum fuse rating for that physical size)
- 300 Volts AC/DC
- Approved for 200,000 Amp Withstand Rating

Mechanical Ratings:

- Insulator base temperature rating: -40°C/F to 150°C (302°F) UL RTI
- Flammability rating of insulator base: UL 94 V-0
 - Use outside these ratings needs to be judged in the end-use application.

Materials:

- Connector: High conductivity aluminum, tin plated
- Insulator base: Phenolic
- Terminal set screws: Aluminum, tin plated
- Belleville Washer: Steel, zinc plated
- Bolt: Steel, zinc plated
- Connector mounting screws: Steel, zinc plated

Agency Approvals:

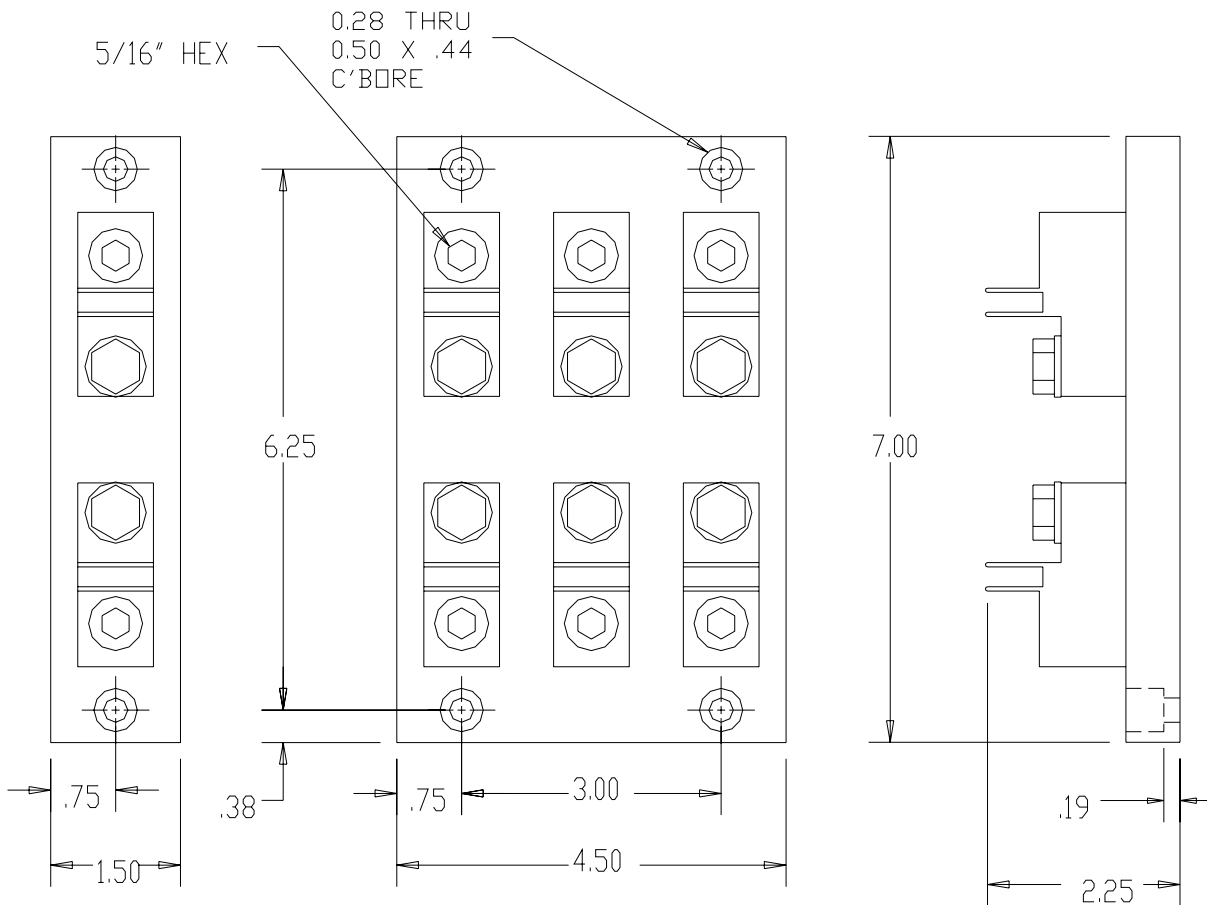
- UL Listed, Fuseholder standards UL 4248-1 and UL 4248-15.
- UL File No. IZLT.E35113
- CSA Certified, CSA C22.2 No. 39 – M1987, File No. LR21455
- CE compliant to IEC 60947-1
- RoHS Compliant

Wire Approvals:

Wire Size	Torque		Copper Wire Stranding Classes - Number of Conductors		
	N-m	In. lbs.	Solid	Class B	Class C
250 kcmil	31.1	275		1	1
4/0	31.1	275		1	1
3/0	31.1	275		1	1
2/0	31.1	275		1	1
1/0	31.1	275		1	1
1	31.1	275		1	1
2	31.1	275		1	1
4	31.1	275		1	1
6	31.1	275		1	1

Aluminum Stranded Wire Range: 250 kcmil - #6 AWG

- Wire strip length – 1 3/16"
- Hex key needed – 5/16"
- Panel mountable: 1/4" (M6) fastener, torque to 30-40 in. lbs.



WWW.MARATHONSP.COM
1-419-352-8441