



TE 118

Duct Temperature Sensor

Application

Measurement of temperatures in gases, vapours and liquids, e.g. in closed pipelines and containers in low-pressure range.

Measuring insert

Fixed 1 x Pt-1000 or 1 x Pt100, Class/DIN B

Protecting tube

Tube	Ø 6 mm
Length (L)	75 - 500 mm
Material	Stainless steel

Connection head

Form B according to DIN 43729	
Material	Light-alloy metal
Protective rating	IP55
Cable gland	PG 16
Cable diameter	Ø 12 - 15 mm

Response time

Water at 0,4 m/s	t 0,5 = 11 sec
Air at 3,0 m/s	t 0,5 = 35 sec

Range -50 ... +250 °C

OPTION

Cosole type BR6.2

Material Stainless steel

Expander coupling

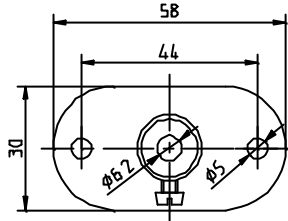
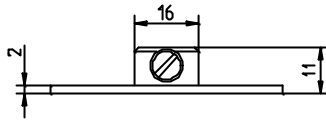
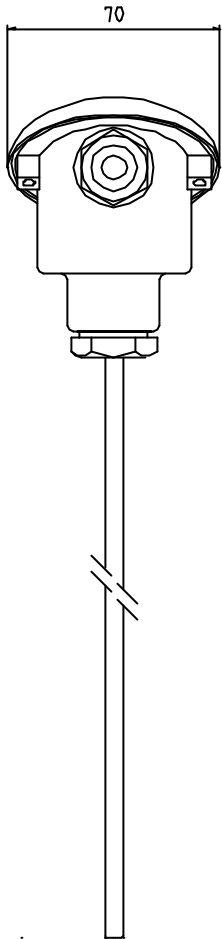
Material	Stainless steel/teflon
Thread	G ¼"
Option	G ½", G ¾"

Transmitter

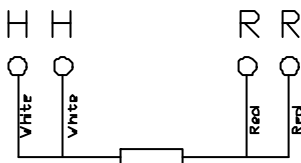
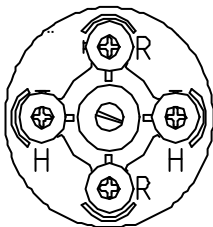
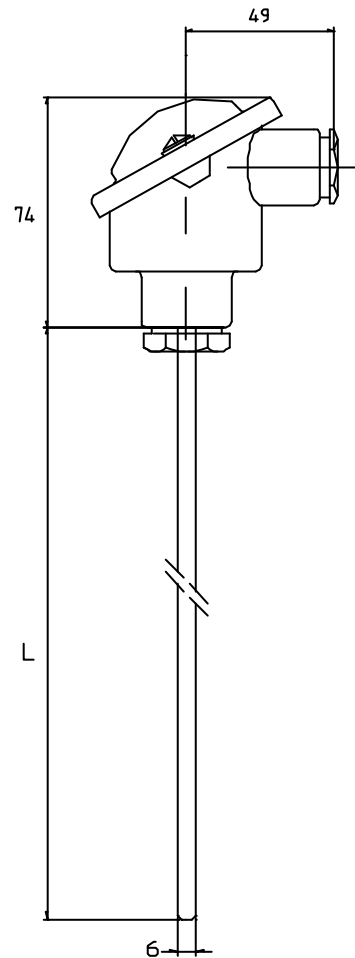
Programmable range	
Supply	8 - 35V
Output signal	4 - 20mA



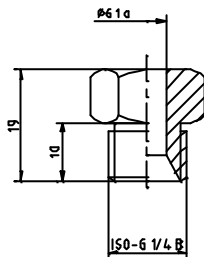
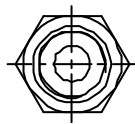
Dimensions



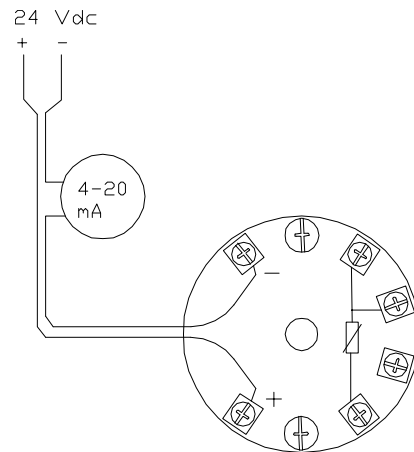
Console type BR6,2



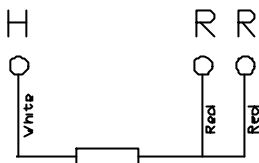
4-wires connection



Expander coupling



Temperature transmitter



3-wires connection