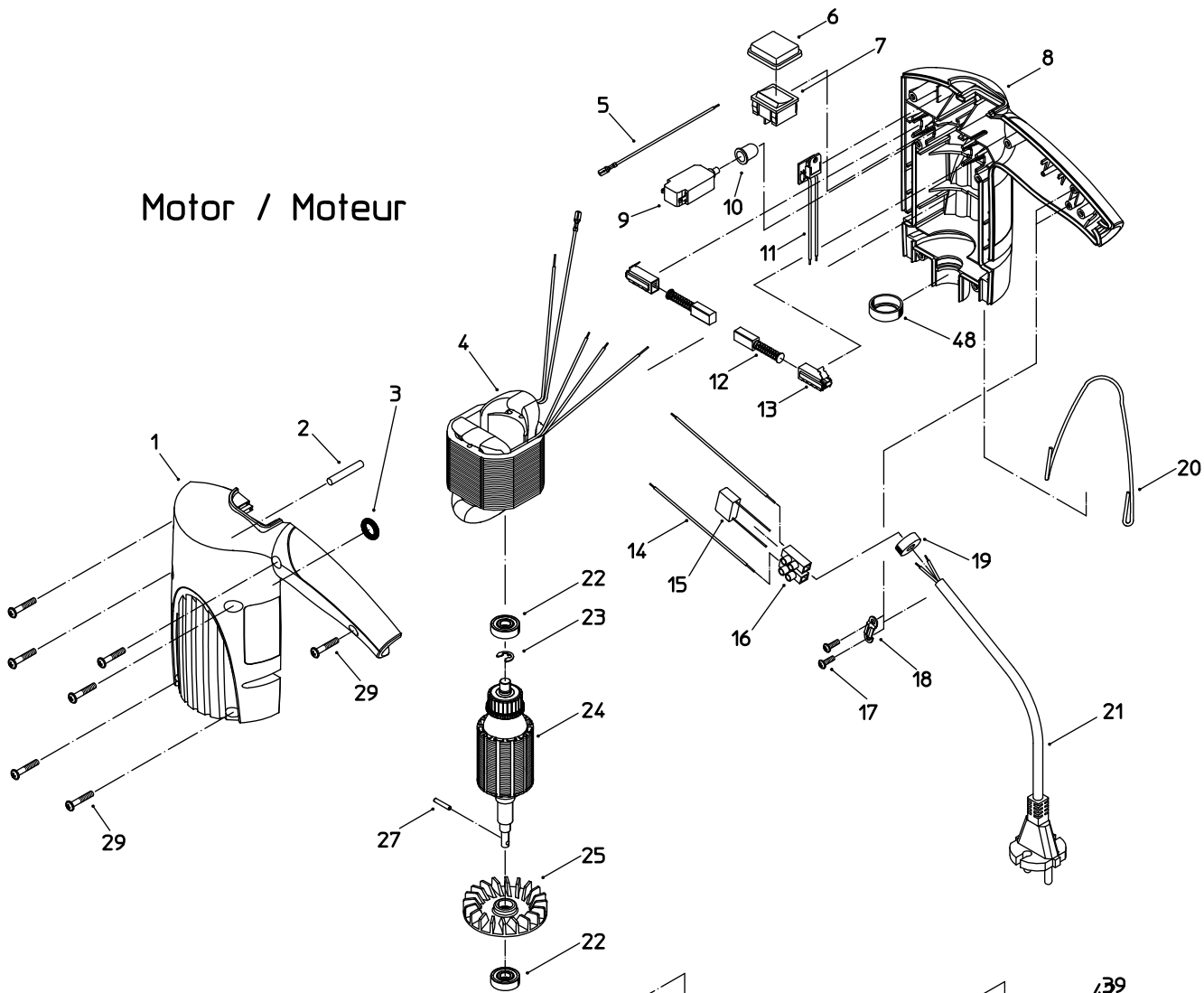
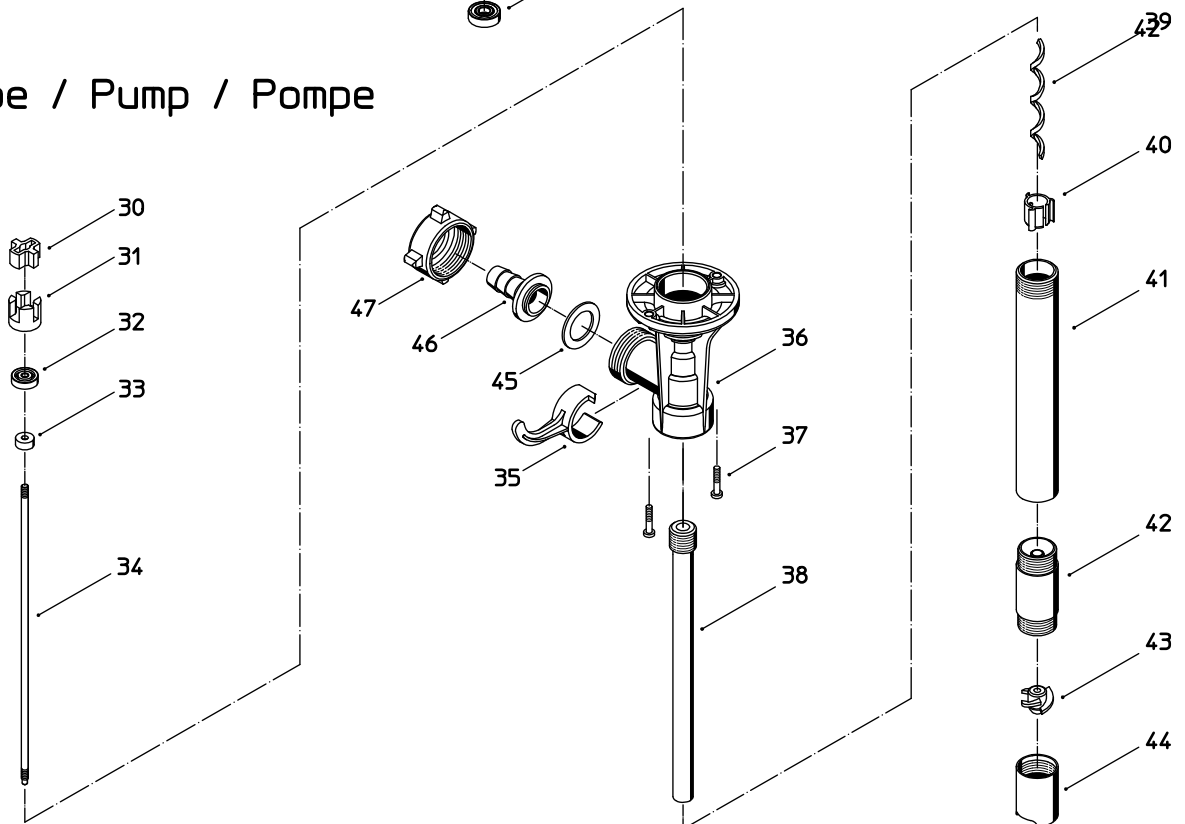


Motor / Moteur



Pumpe / Pump / Pompe





Pos. No.	Qty. per unit	Description	Part No.	Part No.
		Version according to exploded view No. 314 80 010 – 10/2006		
		Motor cpl., Pos. 1 – 29 and 48 mit 5m-cable and plug 110V / 50-60 Hz 230 V / 50-60 Hz 230 V / 50-60 HZ (CH) 240 V / 50 Hz	310 00 018 310 00 000 310 00 021 310 00 020	
1	1	Motor housing, left part	310 00 002	
2	1	Round cord	925 95 906	
3	1	O-ring Ø 9 x 3 (NBR)	925 13 005	
4	1	Stator 110 V / 50-60 Hz 230 V / 50-60 Hz 240 V / 50 Hz	310 00 013 310 00 010 310 00 022	
5	1	Stranded wire, length 85 mm	931 10 005	
6	1	Switch Cover	303 00 034	
7	1	2-step-switch	936 00 024	
8	1	Motor housing, right part	310 00 001	
9	1	Overload cut-out switch 110 V / 50-60 Hz 230 V / 50-60 Hz + 240 V / 50 Hz	936 03 026 936 03 024	
10	1	Dust cap	936 03 011	
11	1	Electronic speed commutator cpl. 110 V / 50-60 Hz 230 V / 50-60 Hz + 240 V / 50 Hz	940 04 028 940 04 027	
12	2	Carbon brush	944 01 008	
13	2	Carbon brush holder	944 00 044	
14	2	Stranded wire, length 90 mm	931 10 006	
15	1	Condenser	940 03 061	
16	1	Terminal	935 05 001	
17	2	Screw	902 15 000	
18	1	Strain relief clamp	935 02 002	
19	1	Seal (Neoprene)	925 09 017	
20	1	Bracket	310 00 003	
21	1	Cable with plug – 5m long Cable with plug – 5m long	303 00 047 303 00 048	

Attention: Please always give full description, part no. and quantity of parts required.

This list
consists of
4 pages**FLUX-GERÄTE GMBH D-75433 Maulbronn**Rights reserved to
make alterations
and/or modifications



Pos. No.	Qty. per unit	Description	Part No.	Part No.
Version according to exploded view No. 314 80 010 – 10/2006				
22	2	Grooved ball bearing	922 20 002	
23	1	Circlip	908 05 007	
24	1	Armature cpl. with Pos. 22, 23, 25, 27 and 48 110 V / 50-60 Hz 230 V / 50-60 Hz + 240 V / 50 Hz	310 00 032 310 00 031	
25	1	Ventilator	310 00 008	
27	1	Clamping pin	914 47 002	
29	7	Screw	902 25 000	
48	1	Bearing sleeve	310 00 028	
	1	Pump without motor, Pos. 30 – 34, 36, 38 - 47 Immersion length 500 mm Immersion length 700 mm Immersion length 1000 mm	314 60 000 314 60 001 314 60 002	
30	1	Coupling star	303 40 637	
31	1	Coupling cage	303 40 635	
32	1	Grooved ball bearing	922 00 000	
33	1	Radial shaft seal (FPM)	925 00 002	
34	1	Shaft Immersion length 500 mm Immersion length 700 mm Immersion length 1000 mm	304 40 013 304 40 014 304 40 015	
35	1	Hook	310 40 055	
36	1	T-piece	314 60 003	
37	2	Screw	902 55 006	
38	1	Inner tube with Pos. 39 Immersion length 500 mm Immersion length 700 mm Immersion length 1000 mm	304 60 023 304 60 024 304 60 025	
39	1	Guide bearing Immersion length 500 mm Immersion length 700 mm Immersion length 1000 mm	304 40 016 304 40 017 304 40 018	
40	1	Coupling star	304 60 019	

Attention: Please always give full description, part no. and quantity of parts required.



Pos. No.	Qty. per unit	Description	Part No.	Part No.
		Version according to exploded view No. 314 80 010 – 10/2006		
41	1	Outer tube Immersion length 500 mm Immersion length 700 mm Immersion length 1000 mm	314 60 009 314 60 010 314 60 011	
42	1	Bearing housing	314 60 021	
43	1	Impellor	304 40 022	
44	1	Foot piece	314 60 020	
		Hose connection cpl. DN 13, Pos. 45 - 47	959 04 071	
45	1	Flat seal (PE)	925 39 019	
46	1	Hose connector DN 13	959 05 087	
47	1	Union nut G 1	907 90 028	
		Hose connection cpl. DN 19, Pos. 45 – 47	959 04 072	
45	1	Flat seal (PE)	925 39 019	
46	1	Hose connector DN 19	959 05 088	
47	1	Union nut G 1	907 90 028	
		Food grease / kg (for radial shaft seal)	952 00 012	

Attention: Please always give full description, part no. and quantity of parts required.

This list
consists of
4 pages**FLUX-GERÄTE GMBH D-75433 Maulbronn**Rights reserved to
make alterations
and/or modifications