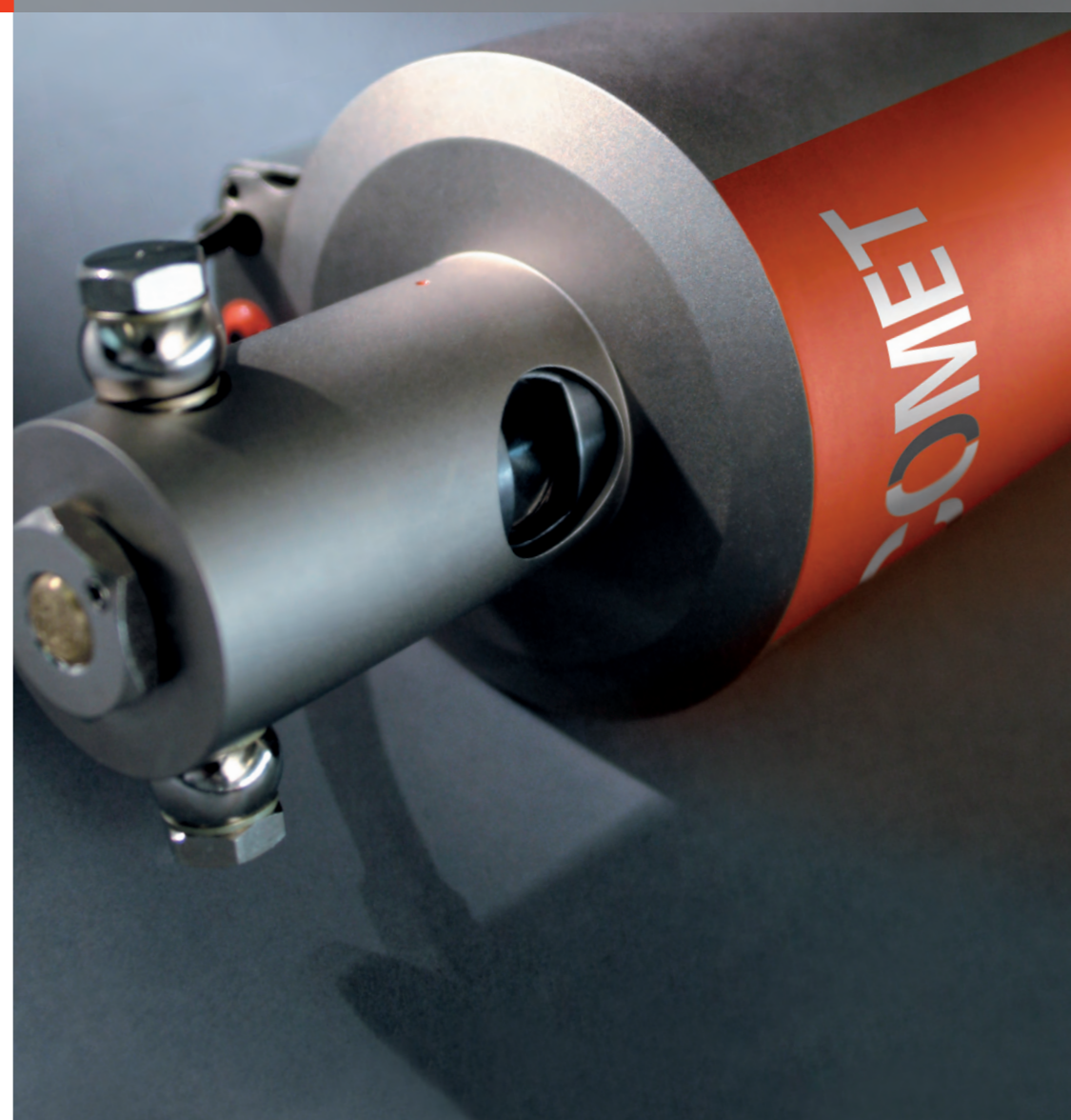


Unipolar Ceramic Tubes



Industrial X-Ray

Overview



08/2012 - V2, specification subject to change without notice

COMET
Technology with Passion

COMET AG
Industrial X-Ray
Herrengasse 10, CH-3175 Flamatt
T +41 31 744 90 00, F +41 31 744 90 90
www.comet-xray.com
info@comet-xray.com

COMET Technologies USA, Inc.
76 Progress Drive
Stamford, CT 06902, USA
T +1 203 969 2161, F +1 203 969 2162
www.comet-xray.com
info@cometusa.com

COMET China
1201 Guiqiao Road, Building 10, 1st floor
Pudong, Shanghai 201206/ P.R. China
T +86 21 6879 9000, F +86 21 6879 9009
www.comet-xray.com
info@cometchina.com

COMET
Technology with Passion



About Unipolar Ceramic X-Ray Tubes

The COMET Unipolar Ceramic tubes are designed for use in demanding industrial applications like Non-Destructive Testing and Food Inspection.

The tube assembly consists of an Unipolar X-Ray tube with cooled anode at ground potential and a high voltage receptacle socket. The shielded tube housing has fittings for water hose connections. The main advantages are high power, small dimensions, low weight and rugged mechanical design.

“One Stop Shop” for Industrial X-Ray Sources:

COMET’s XRS Modules

COMET is pleased to offer all of the necessary components for a customized X-Ray Source: The new XRS modules each contain a COMET X-Ray tube, high voltage generator with cables and coolers designed for easy integration that will optimize system performance.

All XRS modules are factory prepared and tested for hassle free installation and operation.

This novel solution demonstrates COMET’s continuous commitment and investment in delivering real added value to our worldwide customer base.

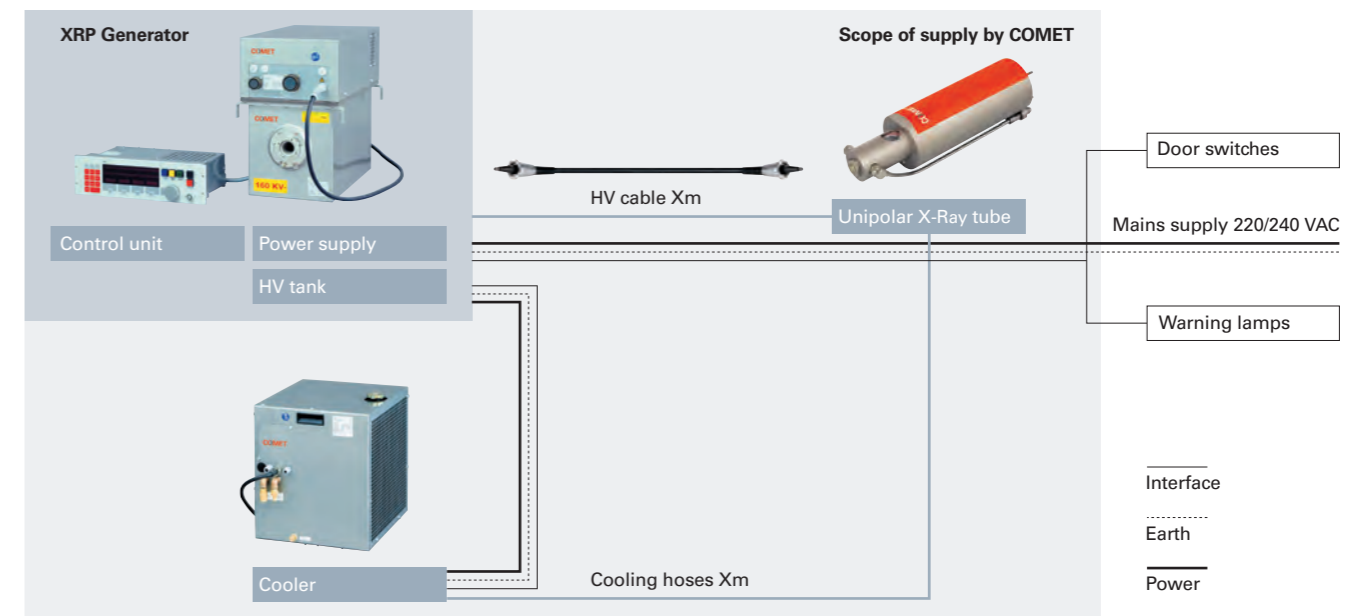
About the Business Unit Industrial X-Ray

COMET Industrial X-Ray is an experienced supplier of components and modules for industrial X-Ray applications and is proud of its reputation as the preferred engineering partner in terms of innovation potential, know how, flexibility and speed. Our product range features X-Ray tubes and sources with small focal spot resolution up to 6 kW in output for more power demanding requirements. From the smallest footprint for use in portable units to 600 kV fixed gantry systems that are suitable for cargo screening, we offer a solution.



Unipolar X-Ray Source

Diagram of a Unipolar X-Ray Source XRS and its environment.



Unipolar Ceramic Tubes – Configuration Information (examples)

Overview of all tubes and fitting module components; high voltage generator, high voltage cable and cooler.

TUBE						GENERATOR	HIGH VOLTAGE CABLE	COOLER	
Type	Ordering No.	Nominal tube voltage	Continuous rating	Focal spot acc. EN 12543	Terminal type	Type	Type/Xm	Type	Ordering No.
CXR-102	915102.51	100 kV	600 W	d = 2.0 mm	R10	XRP-100/2250/2	U3/100-R10SL-R10SL-Xm	XRC-3001-WA	10008640
CXR-105	915110.51	100 kV	1000 W	d = 3.0 mm	R10	XRP-100/2250/2	U3/100-R10SL-R10SL-Xm	XRC-3001-WA	10008640
CXR-150	915200.51	150 kV	1000 W	d = 2.0 mm	R24	XRP-160/2250/2	N3/160-R24SL-R24SL-Xm	XRC-3001-WA	10008640



Ordering No.	915102.51
Nominal tube voltage	100 kV
Continuous rating	600 W
Focal spot acc. EN 12543	d = 2.0 mm
Former focal spot design.	0.6
Filament current, max.	3.2 A
Filament voltage, typical	3.0 V
Inherent filtration	0.8 mm Be
Target material	W
Target angle	20°
Radiation coverage	40°
Leakage radiation, max.	2.5 mSv/h
Cooling medium	Water
Cooling medium flow, min.	4 l/min
Temperature at inlet, max.	35° C
Weight	3.5 kg
Terminal type	R10
Mounting flange	20052839

Ordering No.	915102.01
Nominal tube voltage	100 kV
Continuous rating	600 W
Focal spot acc. EN 12543	d = 2.0 mm
Former focal spot design.	0.6
Filament current, max.	3.2 A
Filament voltage, typical	3.0 V
Inherent filtration	0.8 mm Be
Target material	W
Target angle	20°
Radiation coverage	40°
Leakage radiation, max.	-
Cooling medium	Water
Cooling medium flow, min.	4 l/min
Temperature at inlet, max.	35° C
Weight	0.9 kg
Terminal type	-
Mounting flange	-

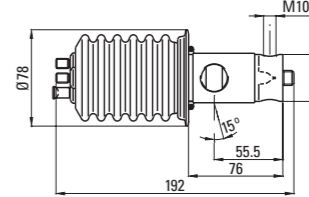
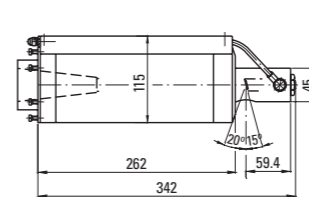
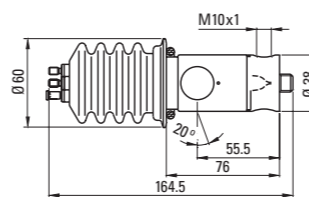
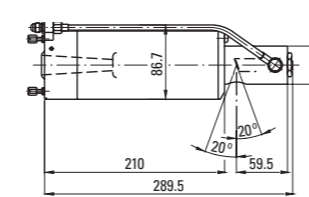
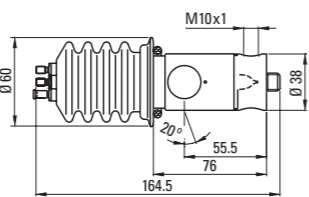
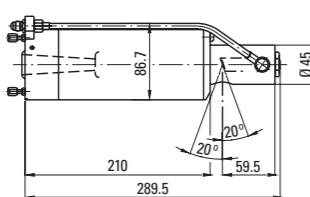
Ordering No.	915110.51
Nominal tube voltage	100 kV
Continuous rating	1000 W
Focal spot acc. EN 12543	d = 3.0 mm
Former focal spot design.	1.5
Filament current, max.	3.2 A
Filament voltage, typical	4.6 V
Inherent filtration	0.8 mm Be
Target material	W
Target angle	20°
Radiation coverage	40°
Leakage radiation, max.	2.5 mSv/h
Cooling medium	Water
Cooling medium flow, min.	4 l/min
Temperature at inlet, max.	35° C
Weight	3.5 kg
Terminal type	R10
Mounting flange	20052839

Ordering No.	915110.01
Nominal tube voltage	100 kV
Continuous rating	1000 W
Focal spot acc. EN 12543	d = 3.0 mm
Former focal spot design.	1.5
Filament current, max.	3.2 A
Filament voltage, typical	4.6 V
Inherent filtration	0.8 mm Be
Target material	W
Target angle	20°
Radiation coverage	40°
Leakage radiation, max.	-
Cooling medium	Water
Cooling medium flow, min.	4 l/min
Temperature at inlet, max.	35° C
Weight	0.9 kg
Terminal type	-
Mounting flange	-

Ordering No.	915200.51
Nominal tube voltage	150 kV
Continuous rating	1000 W
Focal spot acc. EN 12543	d = 2.0 mm
Former focal spot design.	0.6
Filament current, max.	3.2 A
Filament voltage, typical	3.3 V
Inherent filtration	0.8 mm Be
Target material	W
Target angle	15°
Radiation coverage	65° x 35°
Leakage radiation, max.	2.5 mSv/h
Cooling medium	Water
Cooling medium flow, min.	4 l/min
Temperature at inlet, max.	35° C
Weight	6 kg
Terminal type	R24
Mounting flange	4512-104-87141

Ordering No.	915200.04
Nominal tube voltage	150 kV
Continuous rating	1000 W
Focal spot acc. EN 12543	d = 2.0 mm
Former focal spot design.	0.6
Filament current, max.	3.2 A
Filament voltage, typical	3.3 V
Inherent filtration	0.8 mm Be
Target material	W
Target angle	15°
Radiation coverage	65° x 35°
Leakage radiation, max.	-
Cooling medium	Water
Cooling medium flow, min.	4 l/min
Temperature at inlet, max.	35° C
Weight	1.5 kg
Terminal type	-
Mounting flange	-

Outline drawing



Tube diagram

