

**marathon™**  
Special Products

## Product Data Sheet

# MPV8155FF

*Add "CH" to have covers included*

Fuse Holder, Modular Bolt-down

## 800 Amps 600/1500 Volts AC/DC For use with 200 - 800 Amp Photovoltaic Fuses

### Wire Range

- For use with Listed lugs or flexible bus bar

### Electrical Ratings

- Up to 800A, 1500V AC/DC (see Catalog Number Information table)
- SC withstand 10kA (1500V)
- Factory & field wiring

### Agency Compliance

- UL Recognized fuse holder, evaluated to UL 4248-1, 4248-49 FILE NO IZMR2.E364954

### Material Information

- Insulator base:
  - Thermoplastic
  - Flammability rating of insulator base UL94 V-0
  - Insulator base temperature rating: -40°C to 125°C (UL RTI)
- Connector - Al, tin plated
- Bolt - grade 5 Steel, zinc plated
- Flat washer - Steel, zinc plated
- Bellville washer - Steel, zinc plated
- RoHS compliant

A Regal Brand

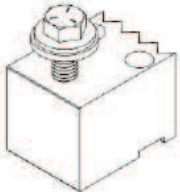
**REGAL**

### Catalog Number Information

Catalog #	Voltage Rating	Suitable Fuse Types	Amperage Rating	Withstand Rating kA	Fuse, Line, Load Terminal Stud Size
MPV8155DD	1500V	Photovoltaic	800A Max	10kA	1/2" Stud

- Add "CH" behind above part numbers for covers installed

### Termination Specifications

Line/Load Side	Termination Type	Torque (Lug)	Torque (Flexible bus bar*)	Maximum Lug Width
	Listed lugs or flexible bus bar on 1/2" fasteners	56.5 N·m (500 lbf·in)	56.5 N·m (500 lbf·in)	50.8 mm (2.00")

- For use with conductors prepared with listed connectors such as single hole compression/crimp lugs.
- Conductor size, ampacity, temperature rating and type are dictated by the ratings of the listed lugs utilized and applicable code requirements.
- Suitability for use with rigid bus bar or other conductors or wire connectors to be determined in the end-use application.

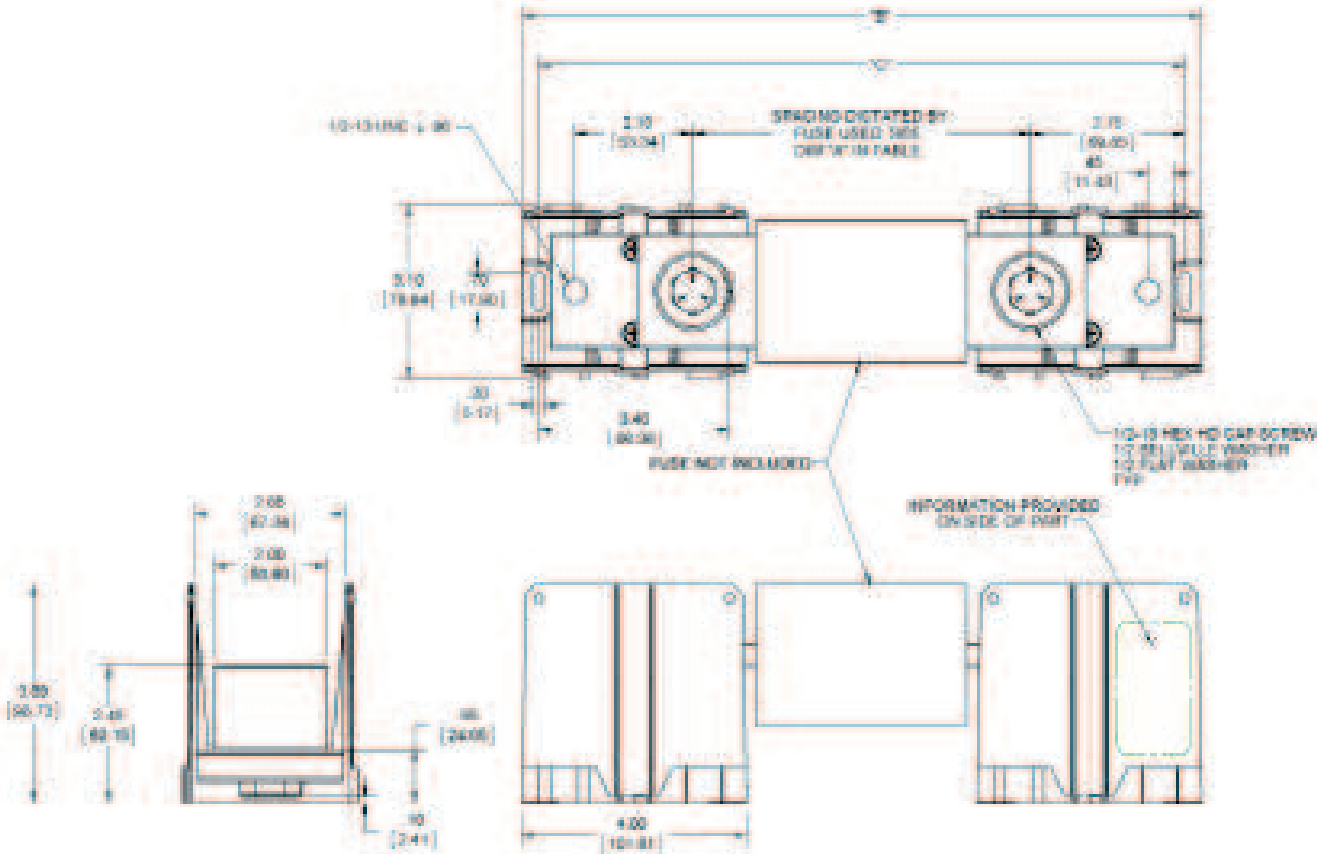
\* Tested with Erico Flexibar 10 x 50 x 1

### Installation & Accessories

- Mounting:
  - # 10 fastener. Torque to 25 - 30 lbf-in.
- Cover : Clear thermoplastic - CH MFH8

**Drawing & Reference Fuse Data**

Not limited to fuses below. Fuse can be evaluated in end use



Class	Amp Range	Voltage	Dim "A"	Dim "B"	Dim "C"
SPFJ	450A	1000Vdc/600Vac	5.98	12.08	11.48