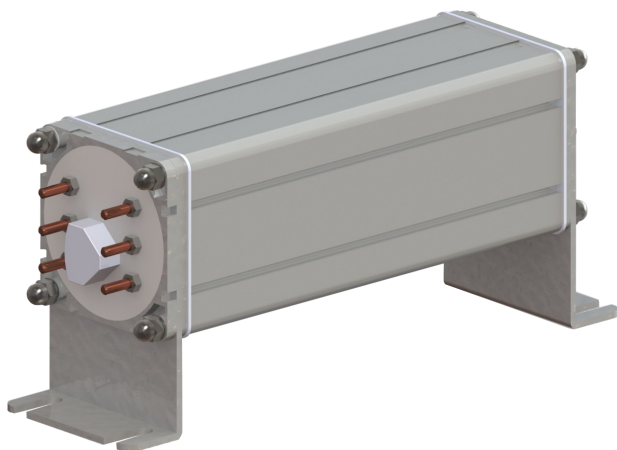




# WHB

Aluminium low to medium power  
water cooled Resistor  
**6kW - 10kW**

WHB60.106 MV\*



**WHB** style resistors are compact aluminium housed, water cooled resistor. They are mainly used in industrial applications where space requirements are an issue. They can be used as filter resistors where continuous low to medium power load needs to be dissipated.

Standard WHB have working voltages up to **2.5kV**. The electrical terminals are opposite the water connections, improving liability and easy mounting.

The connection can be open style with cable lugs, threaded rods or bars or the unit can be fitted with an IP66 connection

WHB style resistors are build from aluminium profiles with closing plates and gaskets. For harsh environmental conditions we recommend the WHBS 'fully welded' version that is also able to withstand salt air conditions. (separate datasheet is available)

WHB style resistors are small to medium-power resistors ranging from 6.5 to 10kW. Because of their compact size they are ideally suited for constant load conditions such as filter applications or small brake applications in industrial systems. The housing is made from extruded aluminium which is closed with endplates and gaskets. For harsh environment we recommend 'WHBS fully welded' types.

The salient characteristics of WHB types are:

- Construction made in aluminium
- Protection degree IP66
- Continuous power range from 6.5 to 10 kW
- Working pressure 6 bar, testing pressure 10 bar

#### Construction

The WHBS series has two or three internal steel tube elements. The elements can be placed in any configuration such as star or delta connection, individually or in parallel.

#### Connection

The WHBS can be supplied with or without a connection box, depending on the protection degree required. The connection can be cable lug or threaded rods.

WHB				
Type	Ohm value [ $\Omega$ ] $\pm 5\%$	Power $P_n$ [kW]	Limit element voltage	Weight [kg]
WHB 16.2	2 - 120	6.5	1,000 V	4
WHB 16.3	1 - 180	10	1,000 V	7
General Specifications				
Insulation resistance		$\geq 20 \text{ M}\Omega @ 2,500 \text{ VDC}$		
Dielectric strength		3,500 VAC @ 50Hz 1 min		
Protection degree		IP66		
Working pressure		6 bar		
Coolant		fresh water/water-glycol		
Dimensions		A [mm]	B [mm]	H [mm]
WHB 16.2		500	110	80
WHB 16.3		500	106	165

