

# XRS-320



## Customer Benefits

- Stepless control of kV and mA
- Easy to install, operate and integrate
- Suitable for factory floor application
- Higher penetration, shorter exposure times
- Best-in-class performance and reliability
- Arc resistant design increases efficiency
- In-house test of complete module

## Tube, Cable, Cooler

TUBE	Ordering No.
<b>MXR-320/23</b>	915334.51
<b>MXR-320/26</b>	915358.51
<b>MXR-320/23AX</b>	915334.58
<b>MXR-320/26AX</b>	915358.58
<b>MXR-320HP/11</b>	915368.51
<b>MXR-320HP/11 FB</b>	915388.51

HIGH VOLTAGE CABLE	Ordering No.
<b>N3/160-R24SL-R24SL-5m</b>	20031101
<b>N3/160-R24SL-R24SL-10m</b>	20031103
<b>N3/160-R24SL-R24SL-15m</b>	20031104

COOLER/CHILLER	Ordering No.
<b>XRC-4501-OA (Cooler oil/air)</b>	10008642
<b>XRC-4501-OW (Cooler oil/water)</b>	10008643
<b>XRCA-5001-OA (Chiller oil/air)</b>	20033338

## Technical Specs XRP-320

### GENERATOR XRP-320/4500/2

Voltage range	15– 320 kV
Adjustment increments (minimum step)	0.2 kV / step
Accuracy	+/- 1 %
Reproducibility (at constant temperature)	+/-0.01 %
High voltage ripple (with 10m high voltage cable)	10 V/mA, min. 40 V
Temperature induced drift	80 ppm/°C
Current range	0–22.5 mA
Adjustment standard range	0.05mA increments
High resolution range (recommended)	0.01 mA steps
Accuracy (at constant temperature)	+/-0.2% of output value +/-0.01% mA
Reproducibility (at constant temperature)	+/-2 μA
Temperature induced drift	50 ppm/°C
Maximum power	4500W
High voltage connector type	R24
<b>Control Unit</b>	<b>XRG</b>
Dimensions (WxHxD) mm	483 mm x 133 mm x 300 mm
Weight	12.5 kg
<b>Power Supply</b>	<b>XRP-Power</b>
Dimensions (WxHxD) mm	340 mm x 350 mm x 628 mm
Weight	45 kg
<b>High Voltage Tank (Oil Insulated)</b>	<b>XRP-T160K / XRP-T320A</b>
Dimensions (WxHxD) mm	375 mm x 335 mm x 625 mm
Weight	80 kg

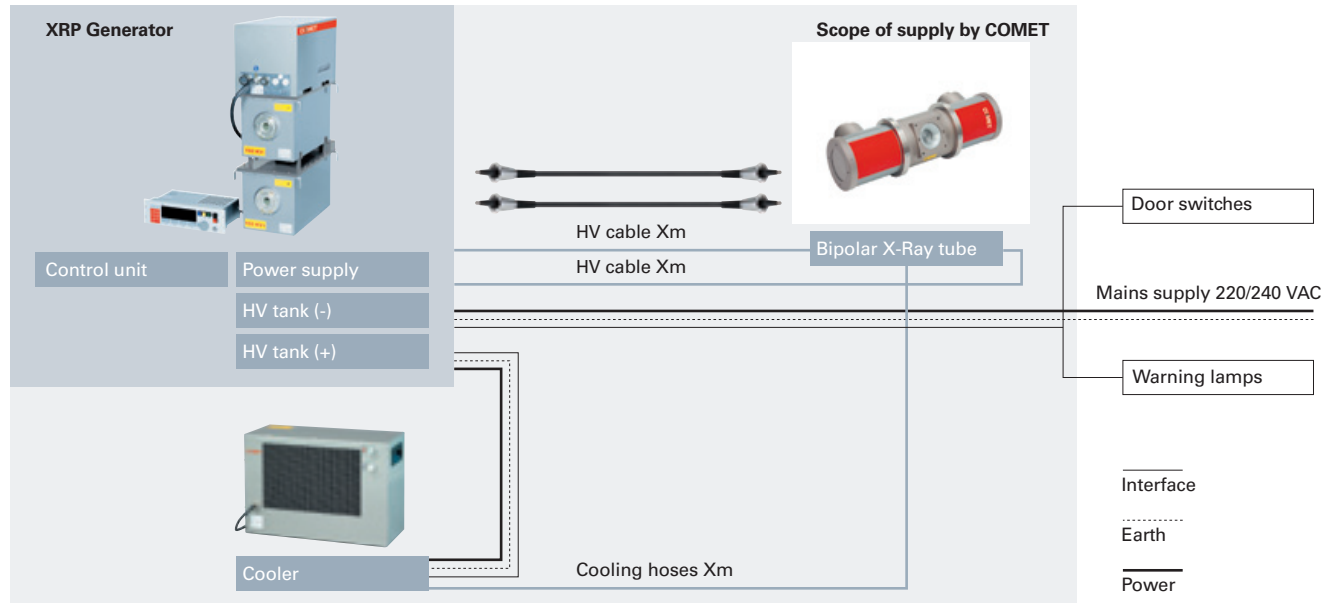
# COMET

Technology with Passion

COMET AG, Herrengasse 10, CH-3175 Flamatt  
 T +41 31 744 90 00, F +41 31 744 90 90  
 info@comet-xray.com, www.comet-xray.com

## Bipolar X-Ray Source

Diagram of a Bipolar X-Ray Source XRS and its environment.



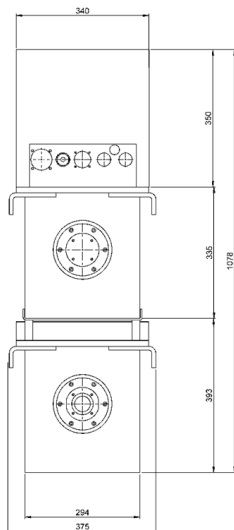
## XRS-320 configurations

Examples of XRS-320 configurations

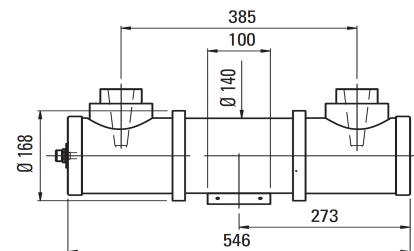
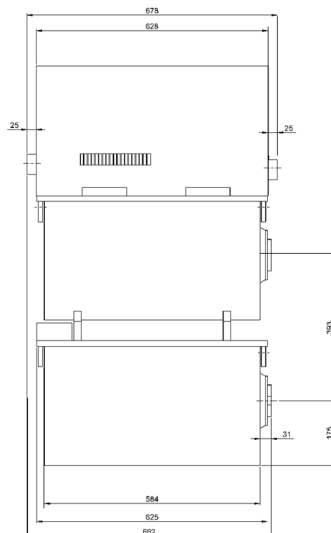
TUBE				CABLE	GENERATOR	COOLER
Type	Continuous rating	Focal spot acc. EN 12543	Radiation coverage	Type	Type	Type
<b>MXR-320/23</b>	640W/1600W	d=1.9/3.6mm	40°	N3/160-R24SL-R24SL-Xm	XRP-320/4500/2	XRC-4501-OA
<b>MXR-320/26</b>	1500W/4200W	d=3.0/5.5mm	40°	N3/160-R24SL-R24SL-Xm	XRP-320/4500/2	XRC-4501-OA
<b>MXR-320/23AX</b>	640W/1600W	d=1.9/3.6mm	40°	N3/160-R24SL-R24SL-Xm	XRP-320/4500/2	XRC-4501-OA
<b>MXR-320/26AX</b>	1500W/4200W	d=3.0/5.5mm	40°	N3/160-R24SL-R24SL-Xm	XRP-320/4500/2	XRC-4501-OA
<b>MXR-320HP/11</b>	800W/1800W	d=0.4*/1.0mm	40°x30°	N3/160-R24SL-R24SL-Xm	XRP-320/4500/2	XRC-4501-OA
<b>MXR-320HP/11 FB</b>	800W/1800W	d=0.4*/1.0mm	80°x11°	N3/160-R24SL-R24SL-Xm	XRP-320/4500/2	XRC-4501-OA

\* Threshold: 25 %

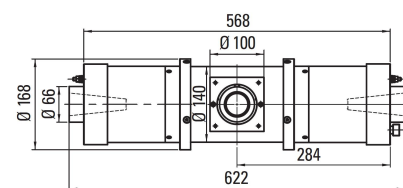
## Outline drawings



Generator XRP-320/4500/2



Standard tube version



Axial tube version