

XRS-450



Customer Benefits

- Stepless control of kV and mA
- Easy to install, operate and integrate
- Suitable for factory floor application
- Higher penetration, shorter exposure times
- Best-in-class performance and reliability
- Arc resistant design increases efficiency
- In-house test of complete module

Tube, Cable, Cooler

TUBE	Ordering No.
MXR-421/26	915366.55
MXR-451/26	915366.51
MXR-451HP/11	915369.51
MXC-451HP/11	915705.51
MXC-451	915704.51
MXR-452/Y	915344.55

HIGH VOLTAGE CABLE	Ordering No.
P3/250-R28SL-R28SL-5m	20031100
P3/250-R28SL-R28SL-10m	20047443
P3/250-R28SL-R28SL-15m	20047444

COOLER/CHILLER	Ordering No.
XRC-4501-OA (Cooler oil/air)	10008642
XRC-4501-OW (Cooler oil/water)	10008643
XRCA-5001-OA (Chiller oil/air)	20033338

Technical Specs XRP-450

GENERATOR XRP-450/4500/2

Voltage range	20– 450 kV
Adjustment increments (minimum step)	0.2 kV / step
Accuracy	+/-1 %
Reproducibility (at constant temperature)	+/-0.01 %
High voltage ripple (with 10m high voltage cable)	10 V/mA, min. 20 V
Temperature induced drift	80 ppm/°C
Current range	0–15 mA (*0-30mA)
Adjustment standard range	0.05mA increments
High resolution range (recommended)	0.01 mA steps
Accuracy (at constant temperature)	+/-0.2% of output value +/-0.01% mA
Reproducibility (at constant temperature)	+/-2 μA
Temperature induced drift	50 ppm/°C
Maximum power	4500W
High voltage connector type	R28
Control Unit	XRG
Dimensions (WxHxD) mm	483 mm x 133 mm x 300 mm
Weight	12.5 kg
Power Supply	XRP-Power
Dimensions (WxHxD) mm	340 mm x 350 mm x 628 mm
Weight	45 kg
High Voltage Tank (Oil Insulated)	XRP-T225K / XRP-T450A
Dimensions (WxHxD) mm	514 mm x 364 mm x 624 mm
Weight	125 kg

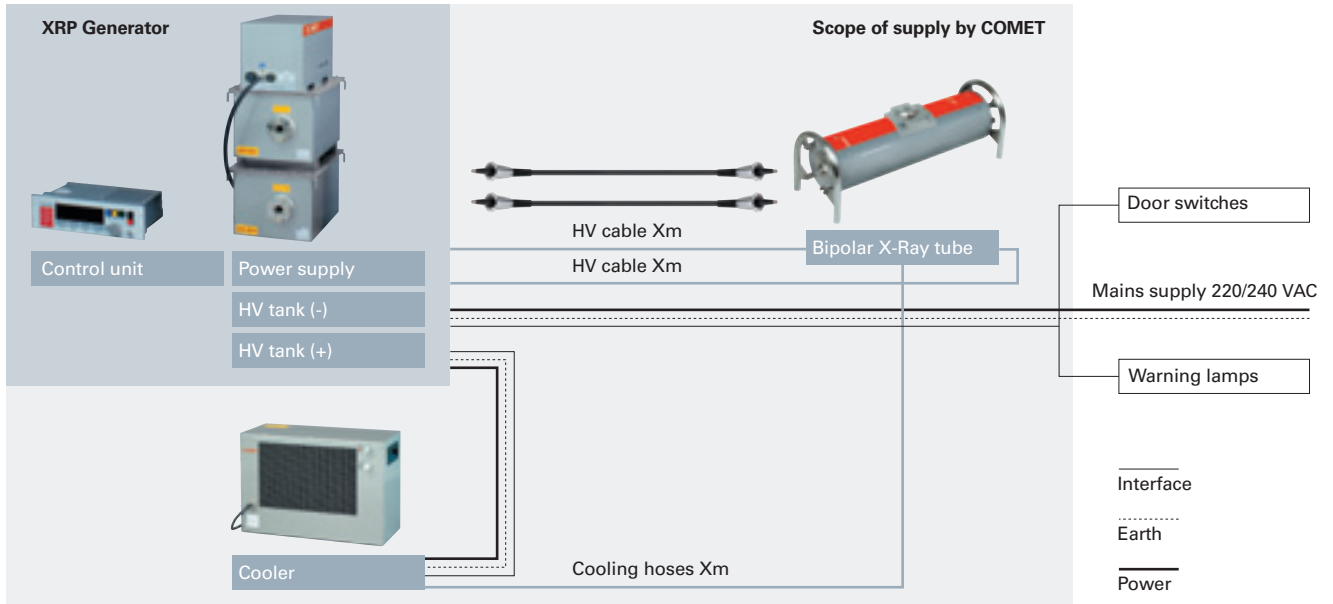
COMET

Technology with Passion

COMET AG, Herrengasse 10, CH-3175 Flamatt
 T +41 31 744 90 00, F +41 31 744 90 90
 info@comet-xray.com, www.comet-xray.com

Bipolar X-Ray Source

Diagram of a Bipolar X-Ray Source XRS and its environment.



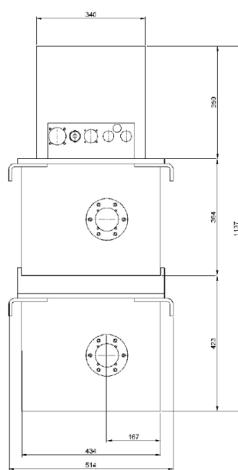
XRS-450 configurations

Examples of XRS-450 configurations

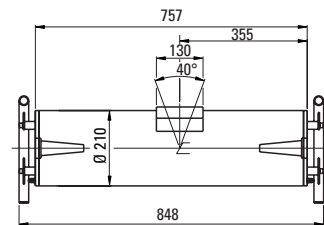
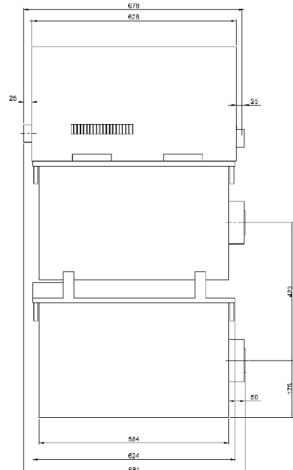
TUBE				CABLE	GENERATOR	COOLER
Type	Continuous rating	Focal spot acc. EN 12543	Radiation coverage	Type	Type	Type
MXR-421/26	900W/4500W	d=2.5/5.5mm	40°	P3/250-R28SL-R28SL-Xm	XRP-450/4500/2	XRC-4501-OA
MXR-451/26	900W/4500W	d=2.5/5.5mm	40°	P3/250-R28SL-R28SL-Xm	XRP-450/4500/2	XRC-4501-OA
MXR-451HP/11	700W/1500W	d=0.4*/1.0mm	40°x30°	P3/250-R28SL-R28SL-Xm	XRP-450/4500/2	XRC-4501-OA
MXC-451HP/11	700W/1500W	d=0.4*/1.0mm	40°x30°	P3/250-R28SL-R28SL-Xm	XRP-450/4500/2	XRC-4501-OA
MXC-451	800W	d=7.5mm	40°x40°	P3/250-R28SL-R28SL-Xm	XRP-450/4500/2	XRC-4501-OA
MXR-452/Y	900W/4500W	d=2.5/5.5mm	90°x20°	P3/250-R28SL-R28SL-Xm	XRP-450/4500/2	XRC-4501-OA

*Threshold: 25 %

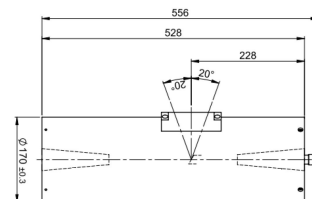
Outline drawings



Generator XRP-450/4500/2



Standard tube version



Tube MXC-451