



KLIXON® | 2EP Series

1 to 35 Amps, Commercial Circuit Breakers

FEATURES

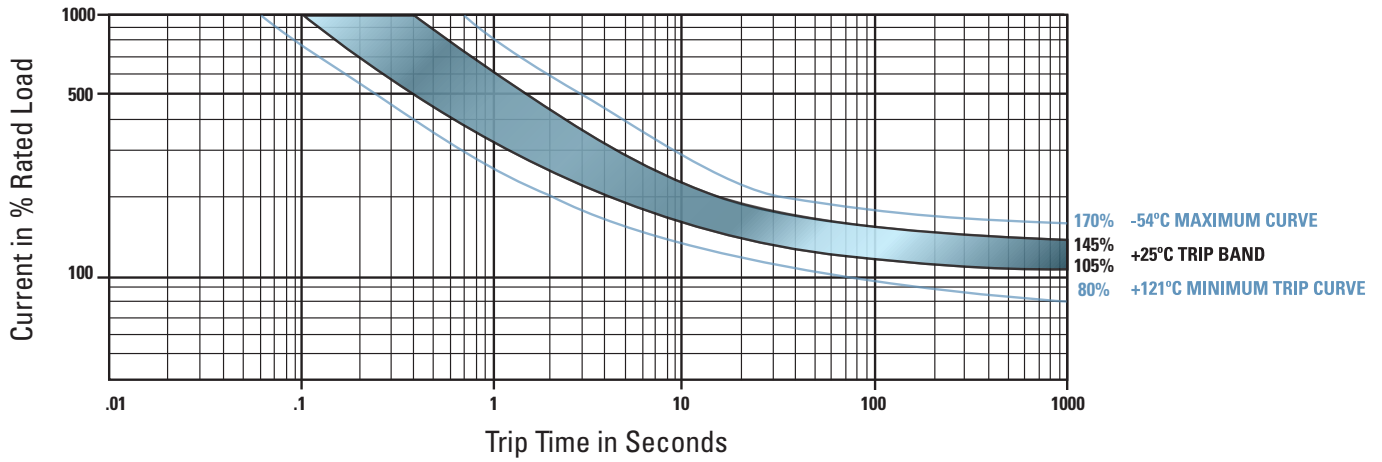
- Explosion-proof device
- UL Recognized (UL1077)
- 1 to 35 amps ratings, high interrupt capacity
- Miniature size, lightweight
- Ambient compensated
- Rated to 75VDC and 250VAC, 60Hz

INTRODUCTION

The Klixon® single pole 2EP series of commercial circuit breakers offers a unique combination of miniature size and weight (less than 22 g) with high shock and vibration resistance. This thermal circuit breaker design can minimize nuisance tripping while offering a high short circuit capacity, and low voltage drop levels. The design offers trip-free operation so that it can not be held closed against an overload. The push-pull actuation minimizes accidental tripping while a white band offers visual trip indication. These features combine to make this solution especially well suited for industrial equipment, radars, medical and dental equipment, electronic control systems, telecom equipment, power supplies and test equipment.

SPECIFICATIONS	
Interrupt Current Capacity	1 to 35 amps : 3,500 amps @ 75 VDC 1 to 35 amps : 1,000 amps @ 250 VAC, 60 Hz
Vibration Resistance	10G minimum, 50 - 500 Hz
Mechanical Shock	Exceeds 50G's
Explosion Proof	While interrupting rupture currents
Endurance	250 VAC / 75 VDC 6,000 cycles resistive load 120VAC 400Hz 2,500 cycles inductive and 6,000 resistive load 30VDC 2,500 cycles inductive load and 6,000 resistive load 10,000 cycles mechanical no load
Potting Material	Minimum 100 cycles @ 200% rated current
Potting Material	Exceeds 10G's
Potting Material	22.0 gm max (including mounting hardware)

TRIP CURVE - Approximate Time, Current Characteristics at 77°F (25°C)

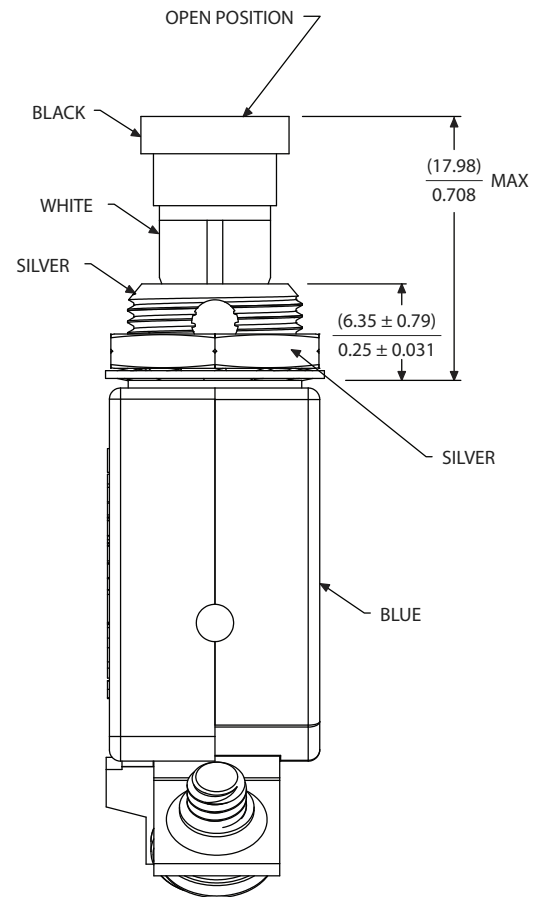
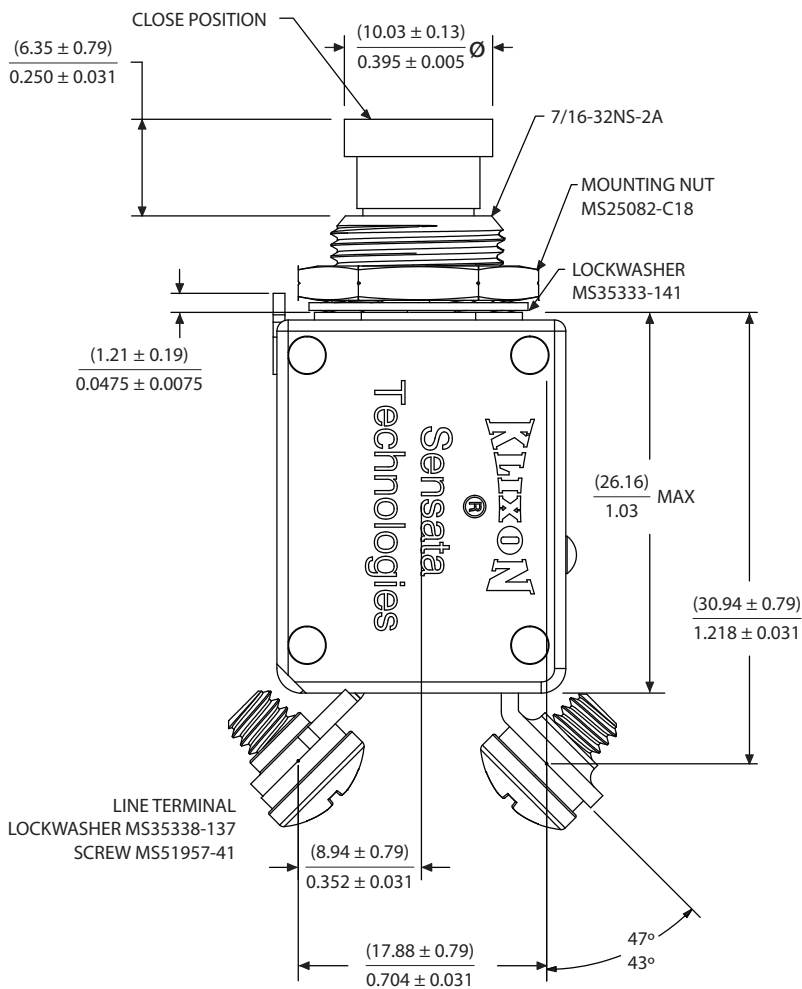
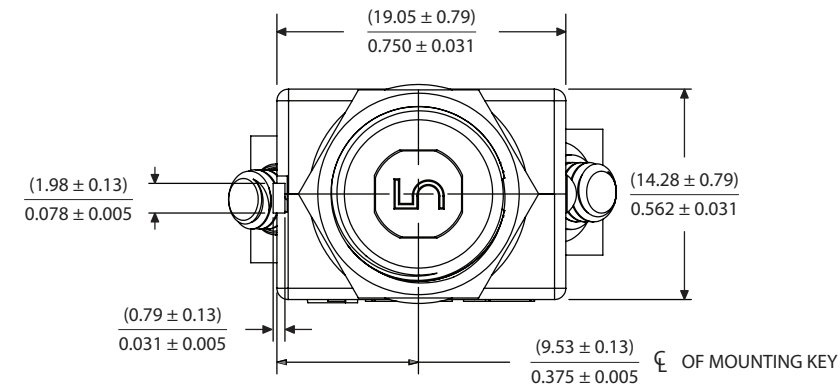


MAX VOLTAGE DROP @ NOMINAL RATED CURRENT	
Amp Rating	Max Drop
1 amps	1.10 volts max
2 amps	0.70 volts max
2.5 amps	0.50 volts max
3 amps	0.40 volts max
4 amps	0.45 volts max
5 amps	0.35 volts max
7.5 amps	0.30 volts max
10 amps	0.28 volts max
15 amps	0.25 volts max
20 amps	0.25 volts max
25 amps	0.20 volts max
30 amps	0.15 volts max
35 amps	0.15 volts max

CALIBRATION					
TEMP °C / °F	MIN ULT TRIP	MAX ULT TRIP	Trip Time in Seconds		
			200%	500%	1000%
+25 / +77	105%	145%	4 to 16	.4 to 1.6	.10 to .40
-54 / -65	105%	170%	7 to 35	.6 to 3.0	.15 to .70
+121 / 250	80%	150%	2 to 13	.25 to 1.0	.06 to .25

RUPTURE		
Amp Rating	Voltage Rating	Rupture Rating
1 to 15 amps	120 VAC, 400 Hz	2,500 amps
1 to 20 amps	28 VDC	6,000 amps
20 amps	120 VAC, 400 Hz	2,000 amps
25 to 35 amps	28 VDC	1,625 amps
25 to 35 amps	120 VAC, 400Hz	1,800 amps

DIMENSIONAL DRAWINGS: 2EP20



STANDARD PART NUMBER BUILDER

2EP X - X

Style

- 20** = 7/16" bushing, 8-32 screw terminals
- 30** = 15/32" bushing, 8-32 screw terminals
- 40** = M12x1 bushing, M4 screw terminals

Amp Rating

(1, 2, 2 ½, 3, 4, 5, 7 ½, 10, 15, 20, 25, 30, 35)

sensata.com

North America

Sensata Technologies Inc.
529 Pleasant Street
Attleboro, MA 02703-0964 USA
1-508-236-3800

Europe

Sensata Technologies Holland B.V.
Kolphofsingel 8
7600 AA ALMELO
The Netherlands
+ 31 (546) 87 95 60

Japan

Sensata Technologies Japan Ltd.
305, Tanagashira Oyamo-cho,
Sunto-gun, Shizuoka-ken
Japan, 410-1396
+ 81-550-78-1211

South America

Sensata Technologies Sensores e Controles do Brasil Ltda
Rua Azarias de Melo #648
Taquaral Campinas - SP, Brasil
CEP 13076008
+ 55 (19) 3754-1111

Korea

Sensata Technologies Korea Ltd.
29F, Trade Tower
159-1 SamSung-Dong
KangNam-Nu
SEOUL 135-729
Republic of Korea
+82-2-551-2904

China

Sensata Technologies China Co., Ltd
BM International
Business Center 30th Floor
100 Yu Tong Road
Shanghai 200070
Peoples Republic of China
+ 86-212-2306-1500



©2012 Sensata Technologies, Inc. All rights reserved worldwide. Printed in USA, revised January 2012.

Important Notice: Sensata Technologies reserves the right to make changes to, or to discontinue, any product or service identified in this publication without notice. Before placing orders, users should obtain the latest version of the relevant information to verify that the information being relied upon is current.

Sensata Technologies assumes no responsibility for customers' product designs or applications. Users must determine the suitability of the Sensata device described in this publication for their application, including the level of reliability required. Many factors beyond Sensata's control can affect the use and performance of a Sensata product in a particular application, including the conditions under which the product is used and the time and environmental conditions in which the product is expected to perform. As these factors are uniquely within the user's knowledge and control, it is essential that the user evaluate the Sensata product to determine whether it is fit for a particular purpose and suitable for the user's application.

The World Depends on Sensors and Controls

Sensata Technologies products are sold subject to Sensata's Terms and Conditions of Sale which can be found at: www.sensata.com/terms.htm