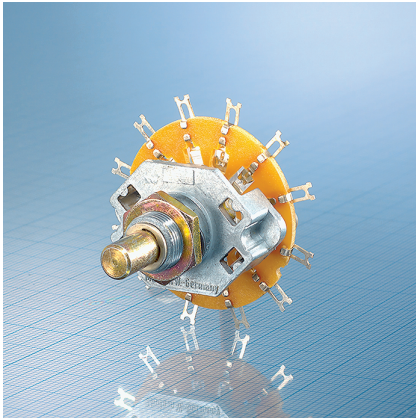


Rotary Switch SM30



Rotary switch for conventional wiring.

- Wafer made of laminated paper.
- Blade contacts ensuring resistance mechanical shock.
- Coding possible.
- Minimum installation depth.

Special designs:

- MIL application design
- Hollow shaft available for dual operation.

1.0 Construction

1.1 Number of wafers max.	10 wafers*
1.2 Switching combinations per wafer Design B, detent angle 60°	1x6 to 1x2; 2x3 to 2x2; 3x2 Special design: Negative 1 pole, cumulative shorting up to 6 positions; special codings
Design E, detent angle 30°	1x11 to 1x2; 2x5 to 2x2; 3x3 to 3x2; 4x2
1.3 Contacts	Soldering lugs
1.4 Mounting	Central mounting

* For less than 4 circuits more than 10 wafers are possible.

2.0 Electrical Data

2.1 Switching power max.	20 VA/W
2.2 Switching voltage max.	200 V~
2.3 Switching current max.	1 A
2.4 Rest current max. at ∂u 20°C	≤ 5 A
2.5 Test voltage at 50 Hz	1000 V
2.6 Life expectancy	without electrical load $\geq 25\,000$ cycles with power max. $\geq 10\,000$ cycles
2.7 Contact resistance initial value	≤ 20 m Ω
Contact resistance	without electrical load ≤ 25 m Ω
after life expectancy	with electrical load ≤ 30 m Ω
2.8 Insulation resistance	$\geq 10^9 \Omega$
2.9 Capacity between 2 contacts	≤ 1 pF
Capacity between contact and ground	≤ 1 pF

3.0 Mechanical Data

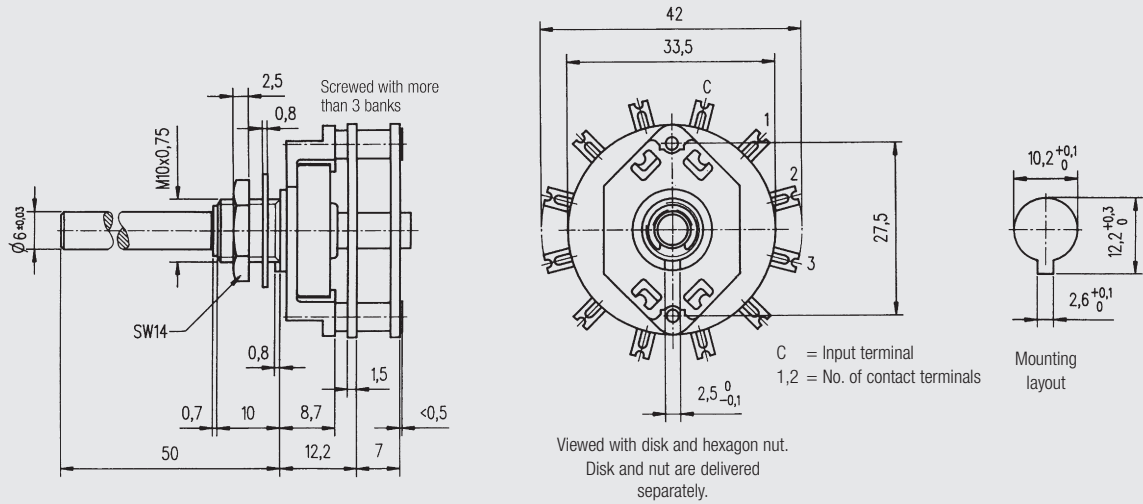
3.1 Switching mode	Shorting or non-shorting
3.2 Stops	Fixed or without stop
3.3 Operating torque acc. to design	5 bis 50 Ncm
3.4 Stop strength	≥ 150 Ncm
3.5 Fastening torque max	150 Ncm
3.6 Vibratory strength	≥ 10 g, 10–500 Hz
3.7 Hollow shaft	As special design
3.8 Waterproofing	With 30° detent angle acc. to MIL-S-3786C

4.0 Other Data

4.1 Contact material	Ag; Au as special design
4.2 Insulating material	Wafer Laminated paper; Code HP Rotor Polycarbonate, PC
4.3 Soldering time and temperature max.	3 s at 350°C, manual soldering

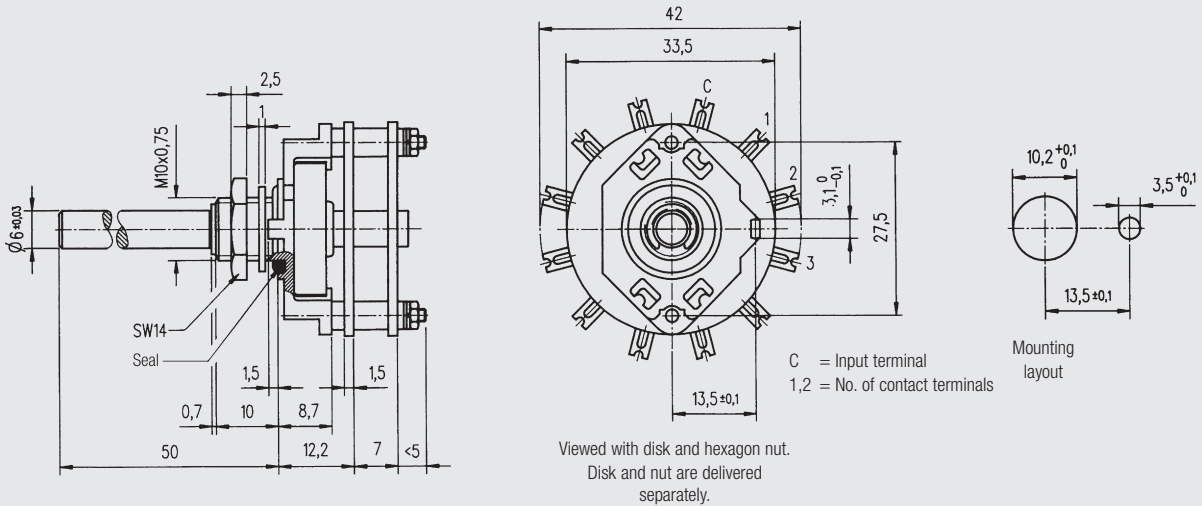
The bold-typed data in the yellow order blocks remain unchanged.
Normal-typed data match the drawings and can be modified according to your wishes.
Blanks need to be completed according to the ordering details on the inside front cover.

Dimensional Drawings · Dimensions in mm



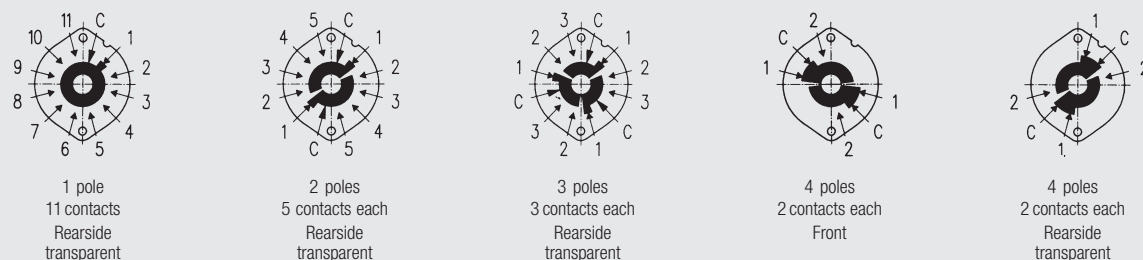
SM 30 - **21** - **2** - **3** - **50** - **A5** - **6** - **7** - **HP** - **8** - **9** - **110** - **L11** - **12** - **13**

SM 30 · Standard version



SM 30 - **21** - **2** - **3** - **50** - **A5** - **6** - **7** - **HP** - **8** - **9** - **110** - **L11** - **MIL12** - **WD13**

SM 30 · MIL version



SM 30 · Contact surfaces as viewed from detent mechanism