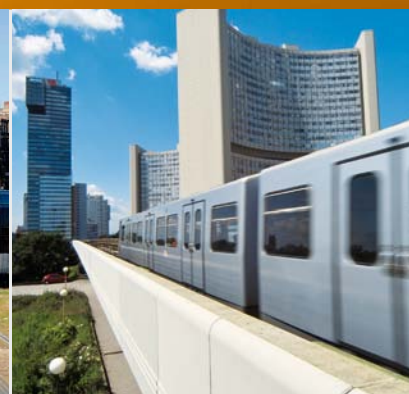


# lea[door]ship



**LEADING THE WORLD MARKET:  
IFE ENTRANCE SYSTEMS**



# won[door]ful



*"It is above all passion that has made IFE the worldwide market leader, our enthusiasm for innovative developments and the strong desire to grow with each new challenge."*

Erika Baumgartner  
Project manager

**IFE ENTRANCE SYSTEMS ARE CONNECTING PEOPLE.** People who want to travel from A to B in comfort and safety, but also business partners who jointly strive for success. Working closely with rolling stock manufacturers and operators we consistently pursue our goal to improve railway vehicle entrance systems across the globe and to stimulate the market with innovations. Day in, day out more than 500.000 IFE entrance systems are in use worldwide.

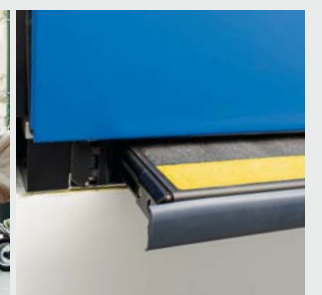
This is our striking evidence, proving that we not only permanently meet the high requirements of the market regarding technology, operational safety, durability and cost efficiency, but that we even clearly outperform them in many aspects. The reason for this worldwide success is not least the fact that we always remained loyal to the principles of our enterprise: entrepreneurship, excellence in technology, reliability, passion and responsibility. These are our values from which you will experience the lasting benefits as an IFE customer and partner.



STATE-OF-THE-ART SYSTEMS  
TO GUARANTEE THE HIGHEST  
LEVEL OF RELIABILITY

# mo[door]nity

RAIL  
VEHICLE  
SYSTEMS  
ENTRANCE SYSTEMS



*"Our reliable  
entrance systems  
are proving them-  
selves day after day  
around the world."*

Manfred Palmethofer  
Project manager

**PUNCTUALITY, EFFICIENCY, RELIABILITY  
AND ECONOMY** in rail transportation are determined by  
a decisive moment: boarding and alighting of passengers.  
Therefore, investing in modern and high-class entrance  
systems with an excellent global reputation pays back for  
manufacturers and operators.

We are setting new standards for sliding and sliding plug  
doors ranging from trams, light rail and metros via commuter  
and regional trains up to high-speed trains. Our tailor-made  
solutions for exterior and interior doors, door controls and  
access devices ensure short boarding and alighting times  
and guarantee a smooth flow even with a high number  
of passengers.



LIFE-LONG SERVICE  
FOR DEMANDING CUSTOMERS

en[door]ance



**RAILSERVICES**  
always on track



*"Our know-how  
provides support  
to IFE entrance  
systems along their  
whole life cycle."*

Markus Überlakner  
Service engineer



1 Testing of electrical components |  
2 On-site service | 3 Overhaul and  
modernization works | 4 Spare parts  
and logistics services

## DURABILITY AND SAFETY ARE MORE THAN SLOGANS FOR IFE.

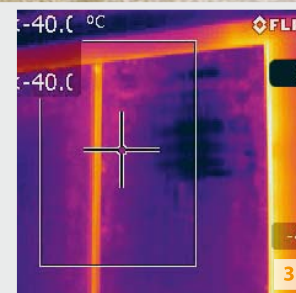
Our RailServices offer an optimized and tailor-made service package over the whole product lifetime to each customer. This ranges from the initial installation via regular safety-checks and maintenance works up to an uncompromising spare parts management with original IFE spare parts. Furthermore, we continuously adapt our entrance systems to the technical evolution, for instance by retrofitting them with safety edges. All services we provide as well as the complete technical support are exclusively carried out by experienced specialists. Engineering, installation and commissioning from one single source are an advantage for our customers, especially in the case of modernizations.



CONFIRMATION OF  
THE HIGHEST MARKET MATURITY

en[door]sement

RAIL  
VEHICLE  
SYSTEMS  
ENTRANCE SYSTEMS



*"When our products enter the market, the worst is already behind them."*

Harald Ebner  
Systems engineer



- 1 Sprinkler system to check the tightness of an entrance system | 2 Functional test under the hardest winter conditions |
- 3 In the in-house differential climate chamber, door systems are exposed to varying inside and outside temperatures |
- 4 Verification of the acoustic insulation performance of an entrance system in the acoustic measurement chamber

**SNOW, ICE, SAND AND TROPICAL SUMMER RAIN** are as much part of the usual loads doors have to withstand day by day as high-speed train crossings, driving through tunnels and brake dust. IFE entrance systems have already experienced all these exposures before they are commissioned for the first time on a vehicle. In order to simulate the whole spectrum in an optimized, efficient and individually adapted way, all necessary equipment is available at IFE in an in-house development center. This includes a double-cabin climate chamber which is able to provide different ambient temperatures from -50 to +80 degrees Celsius on the inside and outside of door systems, as well as snow-, ice- and rain-making devices and an acoustic chamber. Our hydro-pulse plant applies real load levels of many tonnes as they occur in operation. Furthermore, certain components undergo intensive endurance tests, simulating a multiple of the whole product life in just a few months. The time of a door system in our IFE test center will always be its hardest.



# PERFECTION THROUGH PROCESS AND PRODUCT QUALITY



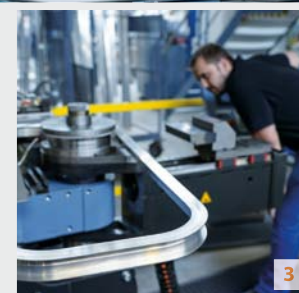
proce[door]e



1



2



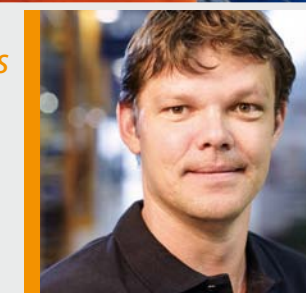
3



4

*"Perfect processes  
result in perfect  
products."*

Jiří Knirsch  
Production engineer



## QUALITY IS PRODUCED IN MANUFACTURING.

In order to guarantee the high product quality and reliability of IFE products, the manufacturing plants excel by the highest standards. Tens of thousands of entrance systems are leaving our factories each year and are supplied to customers around the world, in reliable quality and to the agreed schedules. Major contributions to achieve these goals are a stability in the manufacturing processes, a high level of automation, a constantly supervised and systems-supplier supported stable supply chain and a high qualification of all employees. The full documentation of all processes beginning with the customer specification via engineering through to manufacturing ensures a gap-less and error-free implementation of customer requirements and guarantees a smooth processing of the orders.



ALWAYS IN THE SPOTLIGHT:  
PEOPLE AND ENVIRONMENT

moni[door]ing

RAIL  
VEHICLE  
SYSTEMS  
ENTRANCE SYSTEMS



*"Responsibility  
is our major  
value."*

Manfred Fuchslueger  
Systems engineer

**FUTURE-ORIENTED ENTREPRENEURIAL ACTION MEANS** for us to assume responsibility towards our employees, partners, the environment and society. The principles of sustainability are firmly anchored in our corporate strategy and the operational processes: a sparing use of resources, an efficient energy use, the use of environment-friendly materials, a logistics chain that reduces carbon emissions as well as a social engagement towards our employees and in international aid projects. We support, for example, with the non-profit organization "Knorr-Bremse Global Care e.V.", people in need around the world and we actively supply immediate disaster relief in many regions. As an internationally acting enterprise we furthermore understand ourselves as partners of the regions in which our employees are working. It is therefore important for us to participate in the community life and to engage in social, sports and cultural areas.



# IFE ENTRANCE SYSTEMS: A GLOBAL PLAYER

RAIL  
VEHICLE  
SYSTEMS  
**ENTRANCE SYSTEMS**



**IFE IS INTEGRATED** IN THE KNORR-BREMSE GROUP. This enables us to serve our customers around the world in the best possible way. The European and Asian markets are catered for by our two major manufacturing plants in the Czech Republic

(Brno) and in China (Qingdao). Furthermore we can rely on a multitude of local and well established manufacturing sites and service centers of the Knorr-Bremse Group. Our customers can benefit from close connections to the local sites with

major advantages in maintenance concepts and spare parts stockage. We are also able to implement project-specific concepts regarding local content or series assembly.

**AS GLOBAL LEADER** IN THE PRODUCTION OF ENTRANCE SYSTEMS we always act in a future-oriented way. We have a special responsibility – to our employees, customers and business partners as well as to the environment and the society, in which we live and work. Our values are deeply rooted in our company, give us clear objectives and are key to our success.



## ENTREPRENEURSHIP

We identify future demands and possess an open mind – as well as the courage to develop new business areas.



## EXCELLENCE IN TECHNOLOGY

We focus on anticipating customer needs and on creating customer values, offering innovative, leading-edge and competitive system solutions.



## RELIABILITY

Our products and services respond to the highest safety levels and call for excellent quality standards in all areas and processes.



## PASSION

We passionately work for outstanding results with a commitment to achieve our targets and we are always prepared to go the extra mile.



## RESPONSIBILITY

As a global player we assume corporate responsibility in the social sphere as well as for our environment.