



# LOL-20 IV

The all new LOL-Style-IV combines the benefits of six different LOL-Style-III models into one. We doubled the power output making it 50% brighter than any other unit in its class. Not only does it provide the brightest light, it also provides the most even illumination of your entire web up to 1.2 meters wide, without hotspots, for fine detailed inspection. With the enhanced features and hands-free auto tracking, there is no other light that comes close to its performance.

**Full web,  
100% inspection**

**Immediate  
knowledge of  
problems**

**Significant  
waste reduction**

**Automatic line  
speed tracking**

## New Features

- Double the output – 2400 lux
- X2÷2 Harmonic buttons
- LED readout in mm or inches
- Super fine digital rate control
- Air cooled lamp for longer life
- Each unit is remote ready

## The LOL-20 IV Advantage

- Installs anywhere
- Interconnect up to 5 units
- Auto line speed tracking
- Self contained design
- Operates on universal voltages 90-250v

## Applications

**PRINTING:** Printing, slitting, rewinding, embossing

**CONVERTING:** UV printing and coating inspection, laminating

**METALS:** Galvanizing, bridle rolls, paint lines, aluminum foil

**FILM:** Printing, coating, metalizing



## Specifications

### POWER INPUT

- Any voltage from 90 to 250 VAC, 50/60 Hz
- LITH-O-LIGHT 20: 200 VA max
- LITH-O-LIGHT 40: 400 VA max

### TRIGGERING

- Pulse Source: +2.5 V pk min, zero based pulse, 100µsec min pulse width, 10 kohm input impedance
- Current Sink: 12 VDC @ 1.2 mA

### TRIGGER SUPPLY

- Regulated 12 VDC, current limited at 100 mA available at the "TR" connector

### TRIGGER OUTPUT

- Open collector for driving second unit (slave unit)

### INTENSITY OUTPUT

- Control signal for intensity control of second unit

### ENERGY OUTPUT

- 2.5 joules/flash maximum

### LIGHT OUTPUT

#### Illumination

- 2400 Lux (200 foot candles) at 0.3 meters (1 foot) 100% intensity and maximum flash rate

#### Flash Duration

- 10 microseconds

#### Intensity Levels

- 35%, 50%, 75% and 100%

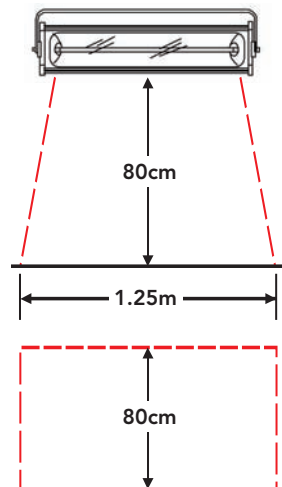
### PHYSICAL

#### Without Yoke

- LITH-O-LIGHT 20: 15 cm x 16 cm x 51 cm, 6.4 kg (6 in x 6-1/4 in x 20 in, 14 lbs)
- LITH-O-LIGHT 40: 15 cm x 16 cm x 102 cm, 12.8 kg (6 in x 6-1/4 in x 40 in, 28 lbs)

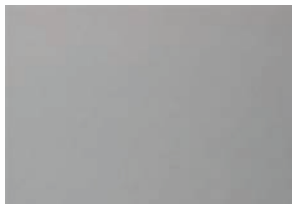
#### Environmental

- Continuous operating temperature range: 0°C to 40°C (32°F to 104°F)
- Humidity: 95% noncondensing

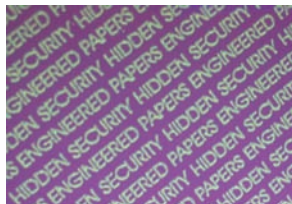


## UV ILLUMINATION

Our UV illumination strobe kits allow inspection at full-production speed of security print, coatings, sealers and incandescent inks. Using either our manual controls or external signals for perfect synchronization to line speed, UNILUX has a light to fit any application.



Web inspection without UV lens



Web inspection with UV lens

## "AUTO" HANDS-FREE FEATURE

The Lith-O-Light III Series incorporates a special feature, exclusive with UNILUX, for printing, slitting and rewinding operations that enables the user to set the flash rate only once for a production run. Once the rate is set and the "AUTO" button is pushed, the flash rate will remain "locked" to the printed repeat regardless of changes in web speed.

## MICRO CONTROLLER

Allows selection of four fixed-intensity settings: 35%, 50%, 75% and 100% of full brightness. The internal/manual rate adjustment is a 10-turn (3600°) precision control with end stops. The MICRO has one preset for the hands-free auto mode operation.



## ROTARY PULSE GENERATOR

With its soft rubber wheel, the Rotary Pulse Generator is designed to ride on the web material or a roller that exactly follows the speed of the web.



**To find a UNILUX representative near you,  
call 1-800-522-0801 or go to [www.UNILUX.com](http://www.UNILUX.com)**

