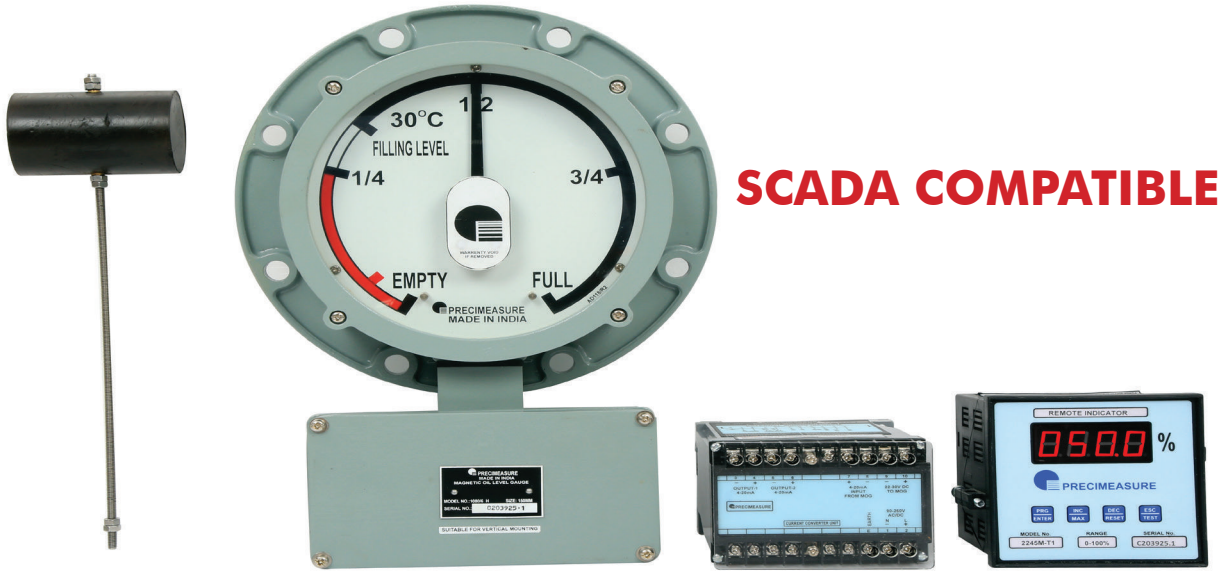


APPLICATION:

Magnetic Oil Level Gauge (MOG) is used to measure and indicate the Oil Level of oil filled Transformers & Oil filled Tanks. Analog signal output 4-20mA is provided for connection to SCADA/DAS. RS 485 modbus RTU protocol option is available.


SCADA COMPATIBLE
SPECIFICATION :

Liquid in Tank	Transformer oil to IS 335 and or any other Oil
Working Temperature	-30° to 100° C
Working Pressure	0 to 4 Kg /Cm2
Working Environment	Indoor or Outdoor

INDICATION :

Dial Sizes	10"	6"	4"
Angular Sweep for standard	300° Round Dial, Black marking on yellow background. . Standard Red Line Indication of Min. to Empty Level	300° Round Dial, Black marking on White background. . Standard Red Line Indication of Min. to Empty Level	300° Round Dial, Black marking on White background. . Standard Red Line Indication of Min. to Empty Level
Angular Sweep for Aircell	150° Round Dial, Black marking on yellow background. Standard Red Line Indication of Min. to Empty Level	150° Round Dial, Black marking on White background. . Standard Red Line Indication of Min. to Empty Level	150° Round Dial, Black marking on White background. . Standard Red Line Indication of Min. to Empty Level
Switch Type & Contact Rating	Micro Switch, 5A @ 240V AC , 0.25A 220V DC		

FLOAT (SENSOR) AND ARM :

Material	Float: Polyurethane Float & Float Arm : SS 304 Optional Brass tube
Float Arm Length	As per Customer Requirement
Travel for Standard Model	Max. 45° Below & Above from the Center Level
Travel for Aircell Model	Max. 45° Above from the Empty level
Margin	Leave Min. 40 mm beyond lower & higher limit markings to avoid striking of float to bottom & top of conservator.
Degree of Protection	IP – 65 as per IEC 60529
HV Test	2.5 KV AC, 50/60 Hz for MOG For 1 Minute & 500V AC, 50/60 Hz for Built- in CCU

Hybrid Parameters: Sensor, CCU & PSU	
Built in Sensor	Built in inside the MOG.

CCU with PSU:

Signal Input	Suitable for connection from Built-in MOG
Auxiliary supply input	90-260V AC/DC
Signal output	2 Nos. 4-20mA DC
Burden on signal output	Maximum 600Ω including loop resistance
Mounting	DIN rail or Screw fixing
Degree of protection	IP40 for enclosure and IP10 for terminal (Suitable for indoor mounting)
H.V test	2KV 50/60 Hz. For 1 minute all terminals to ground

Remote Indicator (Optional):

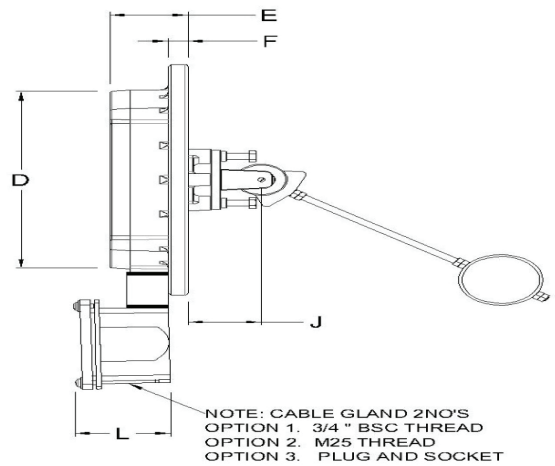
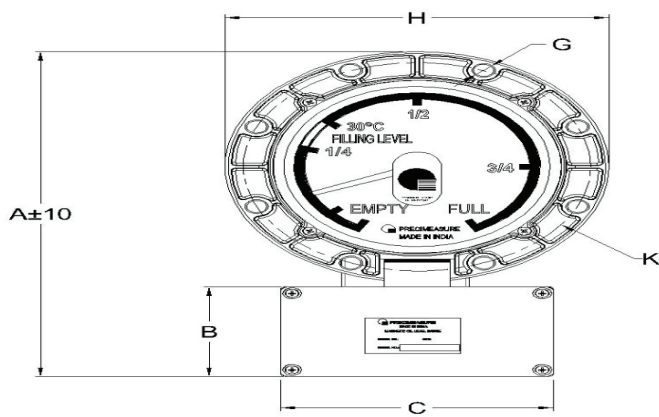
Display	Quad seven segment
Range	0-100%
Signal Input	4-20mA DC from External CCU with PSU
Auxiliary supply input	90-260V AC/DC
Signal output	2 Nos. 4-20mA DC
Communication Port	RS 485 MODBUS RTU protocol (Optional)
Burden on signal output	Maximum 600Ω including loop resistance
Mounting	Flush type (92 x 92 Cutout)
Degree of protection	IP20 (Suitable for indoor mounting)
H.V test	2KV 50/60 Hz. For 1 minute all terminals to ground

ORDERING INFORMATION:

Model No for Standard Hybrid	1080/10H, 1080/6H & 1080/4H
Model No for Aircell Hybrid	1080A/10H, 1080A/6H & 1080A/4H
No. of Switches & Contact Type	Single/ Two & Three. NO/NC/Changeover contact & 1NO+1NC Contact
Mounting Type	Vertical 90°/ 15°/ 30°
Float Arm Length	As per Customer request based on conservator Diameter.
And other Specifications if any	
For example:	MOG 10" Aircell, 2 Switch, Normally Open, 15° Inclined & FAL 450mm 1080-10A/ 2SW/ NO/ A15/ L450/ (if any specifications).

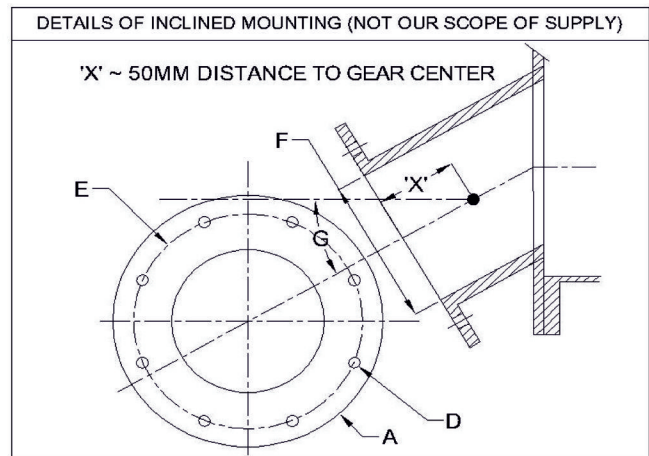
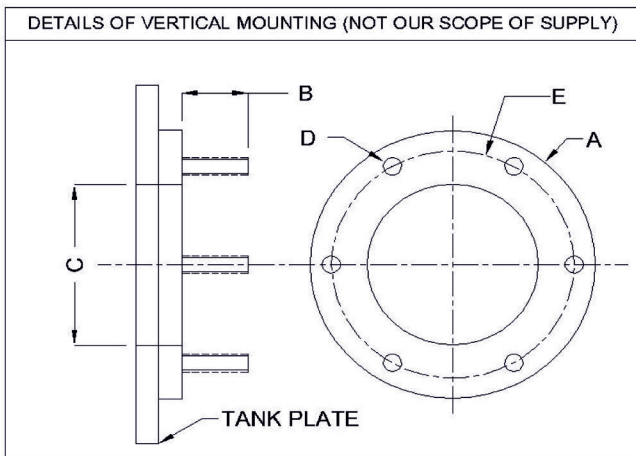
Type test :

1. Vibration Test : Acceleration 0.15mm, frequency 10-55Hz, X,Y & Z 10 sweeps/axis as per IS 9001 (Part - XIII)-1981
2. EMI / EMC Test : a) Electrostatic Discharge Immunity Test as per IEC61000-4-2 b) Electrical Fast Transient Immunity Test as per IEC61000-4-4 c) High Energy Surge Immunity Test as per IEC61000-4-5



OA Drawing

MODEL	DIAL SIZE	TYPE	A	B	C	D	E	F	G	H	J	K	L
4"	100MM	HYB	278	90	165	133	47	12	12X6NO'S	190	46	165	55
6"	150MM	HYB	327	90	165	180	47	12	12X8NO'S	232	46	209.7	55
10"	250MM	HYB	372	90	165	263	109	14	12X6NO'S	263	46	127 FOR VERTICAL	55
									12X8NO'S			225 FOR INCLINED	



Mounting Details

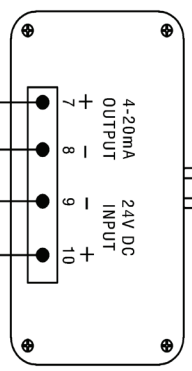
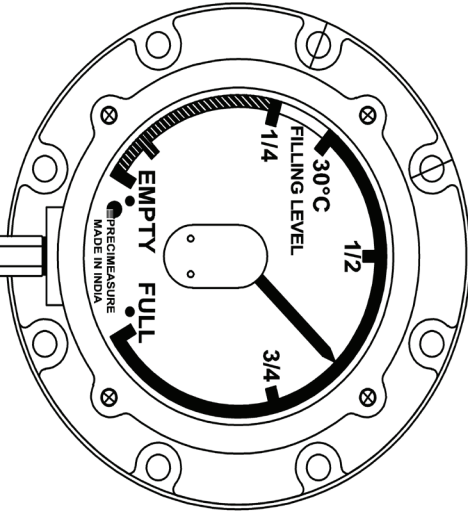
MODEL	DIAL SIZE	A	B	C	D	E	F	G
4"	100MM	219	36	138	M10X6 NO'S	165	133	0°, 15° & 30°
6"	150MM	236	31	165	M10X8NO'S	209.7	160	0°, 15° & 30°
10"	250MM	150	35	90	M10X6NO'S	127	85	0°
		265	35	150	M10X8NO'S	225	150	0°, 15° & 30°

Disclaimer: Precimeasure reserves the right to make any changes in the specifications without prior notice.

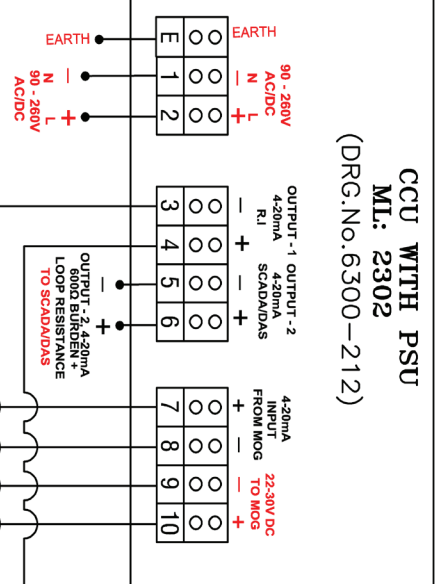
Registered Office :	Branch Office & Works :	Western India Region Office :
Rathod Vatika, B-02, 2 nd floor, #25/3-2 1 st stage Industrial suburb, Yeshwantpur, Bangalore-560022, INDIA	Plot no K-1 Thiruvika - Industrial Estate Guindy, Chennai - 600032. INDIA	Shed no C1B-235/4, C1/239/4, 240/1 to 4/2, 4/3, 4/4 GIDC for Ramangamdi, Vadodara, Gujarat-391243
Phone + 91-80-66080112/ 66080115	Phone + 91-44-66080109 / 66080110	+ 91-9374391599 / +91-9374399974
E-Mail sales-bng@precimeasure.com	E-Mail sales-chn@precimeasure.com	E-Mail : sales-brd@precimeasure.com

4"/6"/10" MOG

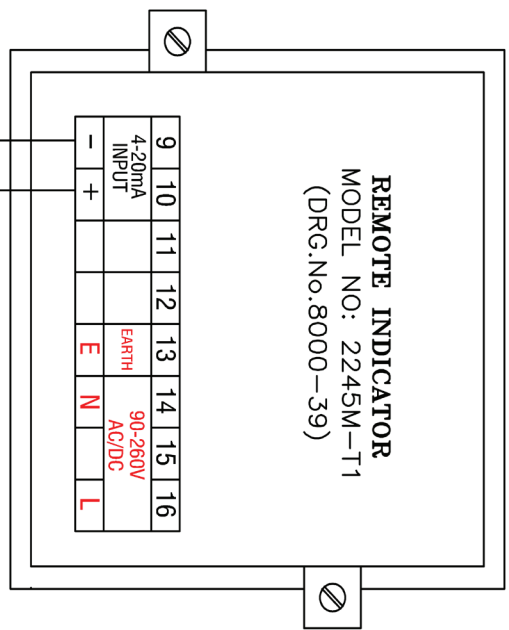
MOUNTED ON TRANSFORMER



TRANSFORMER



LOCAL MARSHALLING BOX KIOSK



* OPTIONAL

CAUTION : FOR CCU SIGNAL INPUT & OUTPUTS CONNECTION, USE SHIELDED (Ø) ARMOURED 4 CORE & 2 CORE 2.5 Sq. mm TWISTED COPPER CABLES AND NOT TO EXCEED 1 K.M. SHIELD (Ø) ARMOUR SHOULD BE EARTHED AT ONE END ONLY, AND SHOULD NOT RUN ALONG WITH POWER SUPPLY CABLE.

REAR VIEW

REMOTE CONTROL PANEL