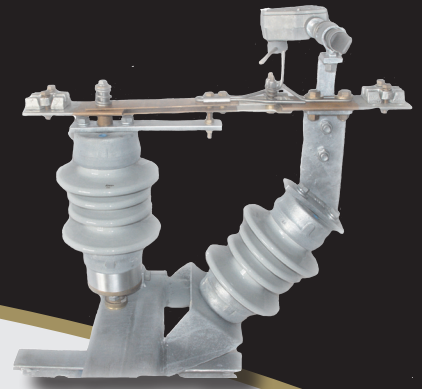




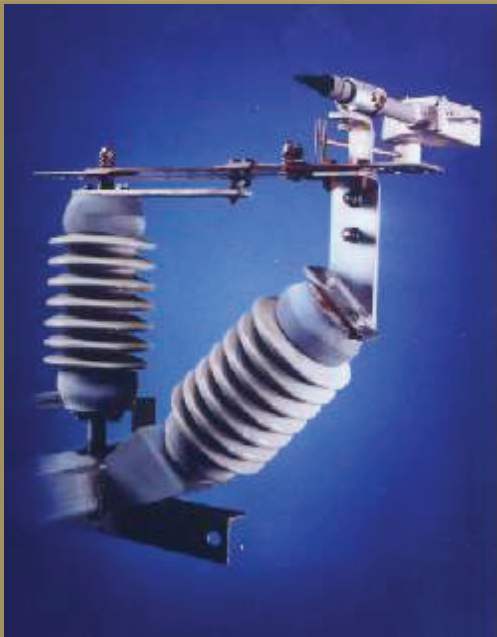
PATTON & COOKE Isolating Disconnect Switch Type 'STU'



The Patton & Cooke single phase unitized disconnect is your ideal choice for rural farming, residential or light industrial applications. It is ideal for locations where a cost effective, compact and easily installed switch may be required. The P&C 'STU' disconnects are constructed of a sturdy galvanized steel base, which eliminates the need for additional cross arms while offering great resistance to the elements. Available in several configurations including 15/25 kV, 600/1200 A and air/load break.

Standard features include: hot tin dipped copper 4 hole NEMA terminal pads, high conductivity copper, self wiping, silver plated contact jaws, arcing rods, unitized construction, galvanized steel body and 30 feet of operating pipe.

FEATURES	BENEFITS
• Single phase option	• Compact, cost effective design
• Unitized construction	• No cross arm required on pole
• Galvanized steel body	• Resistance to the elements
• Keyhole mounting channel	• Easy installation
• Swing handle with padlock provision	• Compact stowage and security
• Universally adaptable operating mechanism	• Configures to most pole designs



*Single phase switch for rural, light industrial
and residential applications*



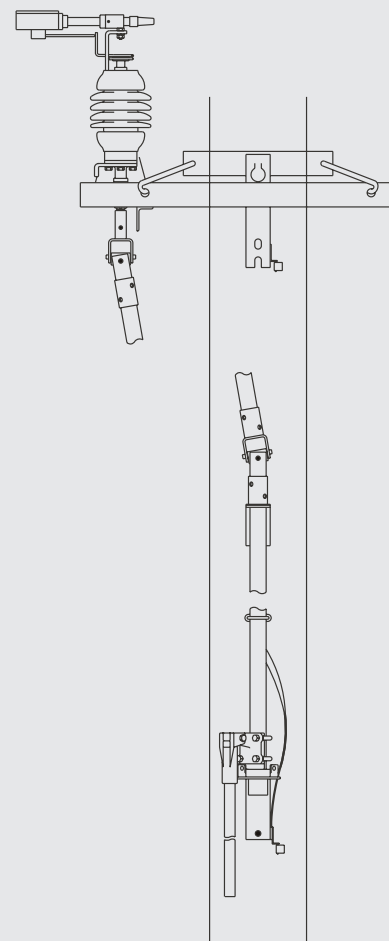
Self wiping, silver plated contact jaws



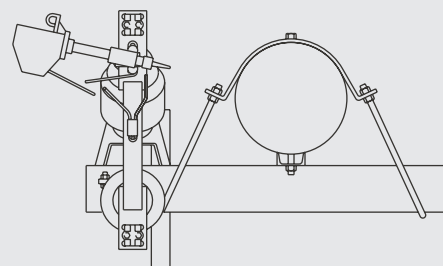
High Voltage Equipment Solutions. Design and Manufacturing.

We make the connection.

Side view of STU assembly



Top view of STU assembly



System Voltage	BIL	Test Voltage AC (60 Hz)		Momentary Symetrical		
		Wet (10s) kV	Dry (60s) kV	600a kA	1200a kA	2000a kA
kV	kV					
15	110	45	50	40	61	100
25	150	60	70	40	61	100

Switches meet or exceed the test requirements of ANSI C37.34



High conductivity copper with self wiping, silver plated contact jaws

AVAILABLE OPTIONS:

- Three Phase
- Load-break device
- Provisions for mechanical key interlock mounting
- Ground mats and switchrod insulators



Three phase STU switch with unitized construction